

Product datasheet for **RR201685**

Pptc7 (NM_001107141) Rat Tagged ORF Clone

Product data:

Product Type: Expression Plasmids
Product Name: Pptc7 (NM_001107141) Rat Tagged ORF Clone
Tag: Myc-DDK
Symbol: Pptc7
Synonyms: RGD1310383
Mammalian Cell Selection: Neomycin
Vector: pCMV6-Entry (PS100001)
E. coli Selection: Kanamycin (25 ug/mL)
ORF Nucleotide Sequence: >RR201685 representing NM_001107141
Red=Cloning site Blue=ORF Green=Tags(s)

TTTTGTAATACGACTCACTATAGGGCGGCCGGGAATTCGTCGACTGGATCCGGTACCGAGGAGATCTGCC
 GCCCGGATCGCC

ATGTTCTCGGTCTTGTCGTACGGGCGGCTGGTGGCCCGCGCTGTGCTCGGCGGCCTGTCGACACCGACC
CCAGGGCGGGCGGCGGAGGGCGGCGGACGCGGCGACTACGGGCTGGTGACGGCGGGCTGCGGCTTCGG
CAAGGACTTCCGTAAGGGCTGCTCAAGAAGGGCGCGTGTACGGGACGACGCGTGTTCGTGGCCCGC
CACCGCTCGGCCGACGTGCTGGGAGTTGCGGATGGCGTTGGAGGGTGGAGAGACTATGGAGTGGACCCGT
CTCAGTTCTCAGGGACTTTAATGCGAACATGTGAGCGGTTAGTAAAAGAAGGACGCTTTGTCCCCAGCAA
TCCTGTTGGGATTCTCACCACGAGCTACTGTGAGTTGCTGCAAAACAAAGTACCCCTTGCTGGGTAGCAGC
ACAGCCTGCATCGTGGTGTGGACAGAAGTAGCCACCGTCTGCACACAGCGAACCTGGGTGACTCGGGCT
TCCTGGTGGTCCGGGGCGGCGAGGTCGTGCACCGCTCTGATGAGCAGCAGCATTACTTCAACACTCCATT
CCAGCTCTCCATTGCTCCCCGGAAGCTGAGGGAGTCGCTGAGCGACAGCCCCGATGCTGCTGACAGC
ACATCTTTCGATGTTAGTTAGGAGACATCATCCTGACAGCGACAGATGGGCTCTTTGACAACATGCCTG
ATTATATGATCCTTCAGGAGCTGAAAAAAGTGAAGAATTCAAATTATGAGAGCATACAGCGGACTGCAAG
GAGCATCGCTGAGCAAGCGCACGAGCTGGCCTATGACCCAAATTACATGTCACCTTTCGCACAGTTGCA
TGTGACAACGGATTAATGTGAGAGGTGAAAACCAGATGACATCACCGTCTCCTCAATAGTGGCTG
AGTACACGGAC

AGCGGACCGACGCGTACGCGCCGCTCGAGCAGAACTCATCTCAGAAGAGGATCTGGCAGCAAATGATATCC
TGGATTACAAGGATGACGACGATAAGGTTTAA



[View online »](#)

Protein Sequence: >RR201685 representing NM_001107141
 Red=Cloning site Green=Tags(s)

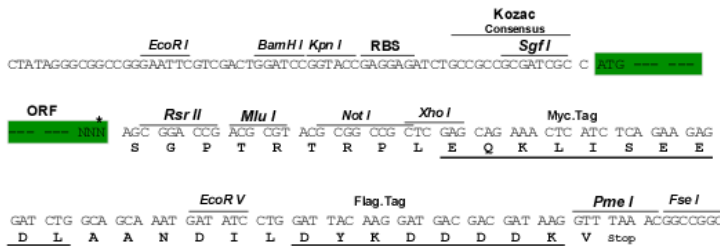
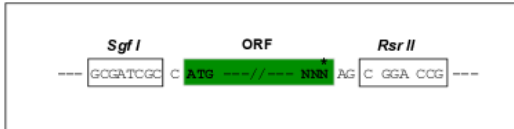
MFSVL SYGRLVARAVLGGLSQTDPRAGGGGGGGSGDYGLVTAGCGFGKDFRKLLKKGACYGDDACFVAR
 HRSADVLGVADGVGGWRDYGVDPSSQFSGTLMRT CERLVKEGRFVPSNPVGILTTSYCELLQNKVPLLGS
 TACIVVLDRSSHRLHTANLGD SGFLVVRGGEV VHRSD EQQHYFNTPFQLSIAPPEAEGVLS DSPDAADS
 TSFDVQLGDIILTATDGLFDNMPDYMILQELKKLKN SNYESIQR TAR SIAEQAH ELAYDPNYMSPFAQFA
 CDNGLNVRGGK PDDITVLLSIVAEYTD

SGP TRTRPLEQKLI SEEDLAANDILDYKDDDDKV

Restriction Sites: SgfI-RsrII

Cloning Scheme:

Cloning sites used for ORF Shuttling:



* The last codon before the Stop codon of the ORF

ACCN: NM_001107141

ORF Size: 921 bp

OTI Disclaimer: The molecular sequence of this clone aligns with the gene accession number as a point of reference only. However, individual transcript sequences of the same gene can differ through naturally occurring variations (e.g. polymorphisms), each with its own valid existence. This clone is substantially in agreement with the reference, but a complete review of all prevailing variants is recommended prior to use. [More info](#)

OTI Annotation: This clone was engineered to express the complete ORF with an expression tag. Expression varies depending on the nature of the gene.

Components: The ORF clone is ion-exchange column purified and shipped in a 2D barcoded Matrix tube containing 10ug of transfection-ready, dried plasmid DNA (reconstitute with 100 ul of water).

Reconstitution Method:

1. Centrifuge at 5,000xg for 5min.
2. Carefully open the tube and add 100ul of sterile water to dissolve the DNA.
3. Close the tube and incubate for 10 minutes at room temperature.
4. Briefly vortex the tube and then do a quick spin (less than 5000xg) to concentrate the liquid at the bottom.
5. Store the suspended plasmid at -20°C. The DNA is stable for at least one year from date of shipping when stored at -20°C.

RefSeq: NM_001107141.1, NP_001100611.1

RefSeq Size: 4234 bp

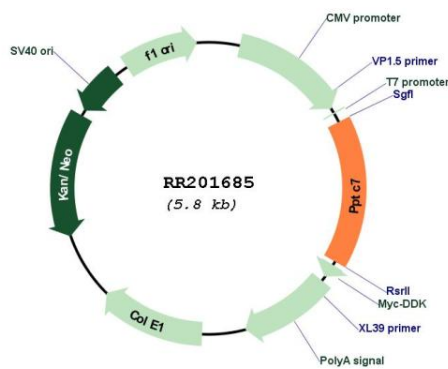
RefSeq ORF: 924 bp

Locus ID: 304488

Cytogenetics: 12q16

MW: 32.8 kDa

Product images:



Circular map for RR201685