

Product datasheet for **RR201629**

Rnf19a (NM_001130560) Rat Tagged ORF Clone

Product data:

Product Type:	Expression Plasmids
Product Name:	Rnf19a (NM_001130560) Rat Tagged ORF Clone
Tag:	Myc-DDK
Symbol:	Rnf19a
Synonyms:	Rnf19
Vector:	pCMV6-Entry (PS100001)
E. coli Selection:	Kanamycin (25 ug/mL)
Cell Selection:	Neomycin



[View online »](#)

ORF Nucleotide Sequence:

>RR201629 representing NM_001130560
 Red=Cloning site Blue=ORF Green=Tags(s)

TTTTGTAATACGACTCACTATAGGGCGGCCGGAATTCGTCGACTGGATCCGGTACCGAGGAGATCTGCC
 GCC**CGGATCGCC**

ATGCAAGAACAAGAAATAAGTTTTATTTTTAAGTATAATGAAGGACTGTGTATGAACATTGATTCTGACT
 CAGTTCTGATGAGCATTTTAGACATGAGTTACATCAGCAAAATGGGTTCCAGATAGAGATCTCCAATCGTC
 TGCTTCGTCTGTGAGCTTGCCTTCTGTCAAAAAGGCACCCAAAAAGAGAAGAATTTCAATAGGCTCTCTC
 TTTCCGAGGAAGAAGGACAACAAACGTAATCAAGGGAGCTCACTGGTGGGGTGGATGGAATGCAAGTA
 TAGAAAGCATACGTTCTGAAGTGTGTGCTGAGAAGAACTCATTCTCTACAAACGCCTCTTCTGACAA
 TGGATTGACGTCCATCAGCAACAAATGGAGACTTTATAGAATGTCCTTTGTGCCTTTTGCGCATTCT
 AAAGACAGATTTCTGATATAATGACATGTCACCATAGATCTTGGCGTGGATTGCCTACGACAGTACCTAA
 GGATAGAAATCTCTGAAAGTAGAGTTAATATCAGTTGCCAGAATGCACTGAACGGTTTAAATCCCATGA
 CATTTCGTTGATATTAAGTGATGATGTCTTAATGGAAAAATGAAGAATTTATGCTTCGACGGTGGCTT
 GTTGCAGATCCTGACTGTAGGTGGTGTCCGGCTCCAGACTGTGGATATGCTGTGATAGCCTTTGGATGTG
 CCAGCTGTCCAAAATTAAGTGTGGACGAGAAGGCTGTGGAACAGAGTTTTGCTACCACTGTAAACAGAT
 CTGGCATCCAAACCAGACCTGTGATGCTGCTCGGCAGGAAAGAGCCAGAGTTTACGCTTAAAGACCATA
 CGTTCTTCATCCATTAGTTACAGCCAGGAGTCTGGAGCAGCAGCTGATGATATAAAGCCGTGTCCACGAT
 GTGCTGCTTATAATAAAGATGAACGATGGGAGCTGTAATCACATGACGTGTGCTGTCTGTGGCTGTGA
 GTTTTGTTGGTTGTGATGAAAGAAATCTCTGATTTACATTATCTAAGTCCCTCAGGTTGACTTTTTGG
 GGAAGAAACCCCTGGAGCCGAAAGAAGAAATCCTGTGGCAGCTGGGAACCCTGGTCGGTCTCCCGTAA
 GGATCGCTCTCATAGCTGGCATTGCCATCCCGCCATGATCATTGGCATTCTGTGTACCGGCGCAA
 GATTCATAATCGCTATGAAGGCAAGATGTTTTCAAAACACAAGCGGAATTTGGCCATAGCCGGTGGTGTG
 ACACTGTCTGTGATCGTGTCTCCAGTGGTAGCCGACGTAGCCGTAGGCATTGGTGTTCCTATCATGTTAG
 CTTATGTCTATGGTGTGTCCTCAATTTCCCTCTGCCGAAGTGGGGCTGTGGAGTTTCTGCGGGCAATGG
 GAAAGGAGTCAGGATCGAATTTGATGATGAAAACGACATAAACGTTGGTGGGACTAACACAGCCATAGAT
 ACAACATCAGTAGCAGAAGCAAGGCACAACCCTAGCATAGGAGAAGGAAGTGTGGCGGTCTGACTGGCA
 GCTTGAGTGCAAGTGAAGCCACATGGATCGAATAGGCACCATGAGAGACAACCTGAGTGAGACAGCCAG
 CACCATGGCATTAGCTGGGGCCAGTATCACCGGCAGCCTGTGAGGAAGCGCCATGGTAAACTGTTTCAAC
 AGGTTGGAAGTACAAGCCGACGTACAGAAGGAGCGGTGCAGCCTCAGTGGAGAATCGGGCACAGTGAAGT
 TGGGGACAGTCAGTGATAATGCCAGCACCAAGCGATGGCAGGGTCCATTCTGAATTCCTACATCCCTCT
 GGACAGAGAAGGGAACAGTATGGAAGTGAAGTGGATATTGAGTCAAAGCCATTCAAGTCCGACACCAC
 AGTGAAGCAGTAGTGTGGATGATGGCGCGCTGCCCGAGGCCACGCAAGCGGGTCCATCCAGTGGCTTGC
 CTGAAGGTAATCCAGTGTACCAAGTGGTCCAAAGAAGCAACAGGAGGAAAAAAGTCAAAAAGTGGTAA
 ACTGAGGAAAAAGGTAACACGAAGATAAATGAGACCAGAGAGGACATGGATGCACAGTTGTTAGAGCAA
 CAGAGCACTAACTCAAGTGAATTTGAGGCGCCGTCCTCAGTGACAGTATGCCGTCTGTAGCAGACTCCC
 ACTCGAGTCATTTTTCTGAATTTAGCTGCTCAGACTTAGAGAGCATGAGAAGTCCCTGTAGTCACGGTTC
 CAGCGATTGCCACGCCGCTTACAGCTGTGAACACCCTTCTGAGGTAGAAAATGACCGTCTGGAGAAT
 TCACCACACAGTGTAGCGGTTCTCTGCTTTCCAAAACGCTTCTGTTTCAAGAAGTGCACCAGCCGAGCC
 ATGCTGCAGATGAGCGAGCCACCAGCAGTGGTGGGGGAAGGCAGCTGTGGATGTGTGCTTTGGCGATGC
 CCTGAGAGAGACAATAACAACCACTCGCACCAGGCAGCAGACTTGAAGTTGCTGTTTCTGACTGAAATT

ACGCGTACGCGGCCGCTCGAGCAGAACTCATCTCAGAAGAGGATCTGGCAGCAAATGATATCCTGGATT
 ACAAGGATGACGACGATAAGGTTTAA

Protein Sequence: >RR201629 representing NM_001130560
Red=Cloning site Green=Tags(s)

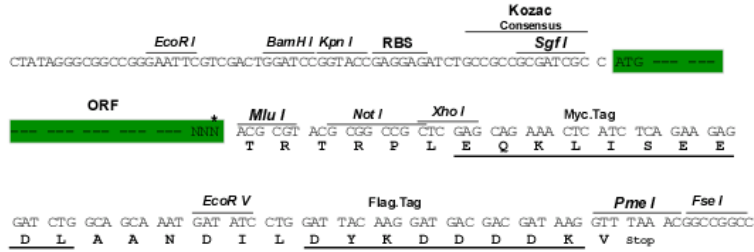
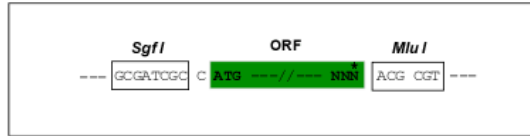
MQEQEISFIFKYNEGLCMNIDSDSVLMSILDMSLHQMGSDRDLQSSASSVSLPSVKKAPKKRRISIGSL
FRRKKNRKSREL TGGVDGSIASIESIRSEVCAEKNSIFSTNASDNL TSIKQIGDFIECPLCLRHS
KDRFPDITMCHHRSCVDCLRQYLRIEISESRVNI SPECTERFNPHDIRLILSDDVLMKEYEFLRRWL
VADPDCRWCPAPDCGYAVIAFGCASCPLTCGREGCGTEFCYHCKQIWHPNQTCDAARQERAQSLRLRTI
RSSSISYSQESGAAADDIKPCPRCAAYIIKMNDGSCNHMTCAVCGCEFCWLCMKEISDLHYLSPSGCTFW
GKKPWSRKKKILWQLGTLVGAPVGI ALIAGIAIPAMIIGIPVYVGRKIHNRYEKDVSKHKRNLA IAGGV
TLSVIVSPVVAAVTVGIGVPIMLAYVYGVVPI SLCRSGGCGVSAGNGKGVRIEFDDENDINVGGTNTAID
TTSVAEARHNPSIGEGSVGGLTGSLSASGSHMDRIGTMRDNLSETASTMALAGASITGSLSGSAMVNCFN
RLEVQADVQKERC SLGESGTVSLGTVSDNASTKAMAGSILNSYIPLDREGNSMEVQVDIESKPFKFRHH
SGSSSVDDGGAARGHASGSSGLPEGKSSATKWSKEATGGKSKSGKLRKKGNTKINETREDMDAQLLEQ
QSTNSSEFEAPSLSDMPSVADSHSHFSEFSCSDLESMRTSCSHGSSDCHARFTAVNTLPEVENDRLN
SPHQCSGSLLSKTASCSEVPQPSHAADERATSSGGKAAVDVCFGDALRETNNNHSHQAADLKVAVQTEI

TRTRPLEQKLI SEEDLAANDILDYKDDDDKV

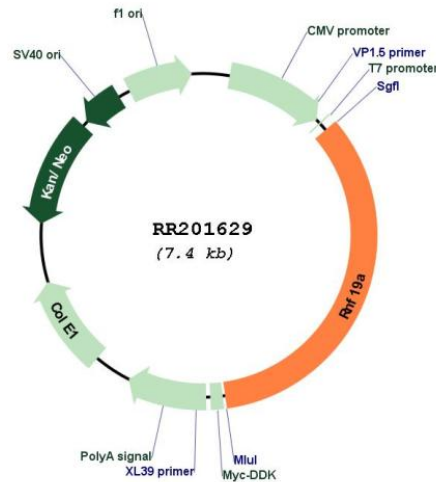
Restriction Sites: Sgfl-MluI

Cloning Scheme:

Cloning sites used for ORF Shutting:



* The last codon before the Stop codon of the ORF

Plasmid Map:


ACCN: NM_001130560

ORF Size: 2520 bp

OTI Disclaimer: The molecular sequence of this clone aligns with the gene accession number as a point of reference only. However, individual transcript sequences of the same gene can differ through naturally occurring variations (e.g. polymorphisms), each with its own valid existence. This clone is substantially in agreement with the reference, but a complete review of all prevailing variants is recommended prior to use. [More info](#)

OTI Annotation: This clone was engineered to express the complete ORF with an expression tag. Expression varies depending on the nature of the gene.

Components: The ORF clone is ion-exchange column purified and shipped in a 2D barcoded Matrix tube containing 10ug of transfection-ready, dried plasmid DNA (reconstitute with 100 ul of water).

Reconstitution Method:

1. Centrifuge at 5,000xg for 5min.
2. Carefully open the tube and add 100ul of sterile water to dissolve the DNA.
3. Close the tube and incubate for 10 minutes at room temperature.
4. Briefly vortex the tube and then do a quick spin (less than 5000xg) to concentrate the liquid at the bottom.
5. Store the suspended plasmid at -20°C. The DNA is stable for at least one year from date of shipping when stored at -20°C.

RefSeq: [NM_001130560.1](#), [NP_001124032.1](#)

RefSeq Size: 4187 bp

RefSeq ORF: 2523 bp

Locus ID: 362900

Cytogenetics: 7q22

MW: 90.4 kDa