

## Product datasheet for **RR201599**

### **Mchr1 (NM\_031758) Rat Tagged ORF Clone**

#### Product data:

**Product Type:** Expression Plasmids  
**Product Name:** Mchr1 (NM\_031758) Rat Tagged ORF Clone  
**Tag:** Myc-DDK  
**Symbol:** Mchr1  
**Synonyms:** Gpr24; Mch-1r; Slc1  
**Vector:** pCMV6-Entry (PS100001)  
**E. coli Selection:** Kanamycin (25 ug/mL)  
**Cell Selection:** Neomycin  
**ORF Nucleotide Sequence:** >RR201599 representing NM\_031758  
**Red=Cloning site Blue=ORF Green=Tags(s)**

TTTTGTAATACGACTCACTATAGGGCGCCGGGAATTCGTCGACTGGATCCGGTACCGAGGAGATCTGCC  
GCC**GCGATCGCC**

ATGGATCTGCAAACCTCGTTGTGTCCACTGGCCCAATGCCAGCAACATCTCCGATGGCCAGGATAATC  
TCACATTGCCGGGTACCTCCTCGCACAGGGAGTGTCTCCTACATCAACATCATTATGCCTTCCGTGTT  
TGGTACCATCTGTCTCCTGGGCATCGTGGGAACTCCACGGTCATCTTTGCTGTGGTGAAGAAGTCCAAG  
CTACACTGGTGCAGCAAGTCCCGACATCTTCATCATCAACCTCTCTGTGGTGGATCTGCTCTTCTGTC  
TGGGCATGCCTTTCATGATCCACCAGCTCATGGGGAACGGCGTCTGGCACTTTGGGAAACCATGTGCAC  
CCTCATCACAGCCATGGACGCCAACAGTCAGTTCCTAGCACCTACATCCTGACTGCCATGACCATTGAC  
CGCTACTTGGCCACCGTCCACCCATCTCCTCCACCAAGTTCGGGAAGCCCTCCATGGCCACCCTGGTGA  
TCTGCCTCCTGTGGGCGCTCTCCTTCATCAGTATCACCCCTGTGTGGCTCTACGCCAGGCTCATTCCCTT  
CCCAGGGGGTGTGTGGGCTGTGGCATCCGCTGCCAAACCCGGACACTGACCTCTACTGGTTCACTCTG  
TACCAGTTTTTCCTGGCCTTGGCCCTCCGTTTGTGGTCAATACCGCCGCATACGTGAAAATACTACAGC  
GCATGACGTCTTCGGTGGCCCCAGCCTCCCAACGCAGCATCCGGCTTCGGACAAAGAGGGTGACCCGCAC  
GGCCATTGCCATCTGTCTGGTCTTCTTTGTGTGCTGGGCAACCCTACTATGTGCTGCAGCTGACCCAGCTG  
TCCATCAGCCGCCGACCCTCACGTTTGTCTACTTGTACAAACGGCCATCAGCTTGGGCTATGCTAACA  
GCTGCCTGAACCCCTTTGTGTACATAGTGTCTGTGAGACCTTTCGAAAACGCTTGGTGTGTGCTGAGTAA  
GCCTGCAGCCAGGGGCAGCTCCGCACGGTCAGCAACGCTCAGACAGCTGATGAGGAGAGGACAGAAAGC  
AAAGGCACC

**ACGCGT**ACGCGGCGGCTCGAGCAGAAACTCATCTCAGAAGAGGATCTGGCAGCAATGATATCCTGGATT  
ACAAGGATGACGACGATAAGGTTTAA



[View online »](#)

**Protein Sequence:** >RR201599 representing NM\_031758  
 Red=Cloning site Green=Tags(s)

MDLQTSLLSTGPNASNISDGQDNLTLPGSPPRGTGSVSYINIIMPSVFGTICLLGIVGNSTVIFAVVKKSK  
 LHWCSNVPDIFIINLSVVDLLFLLGMPFMIHQLMGNGVWHFGETMCTLITAMDANSQFTSTYILTAMTID  
 RYLATVHPISSTKFRKPSMATLVICLLWALSFISITPVWLYARLIPFPGGAVGCCGIRLNPDPDLYWFTL  
 YQFFLAFALPFVVITAAYVKILQRMTSSVAPASQRSIRLRTKRVTRTAIAICLVFFVCWAPYYVLQTLQL  
 SISRPTLTFVYLYNAAISLGYANSCLNPFVYIVLCETFRKRLVLSVKPAAQGLRRTVSNQAQTAEERTES  
 KGT

TRTRPLEQKLISEEDLAANDILDYKDDDDKV

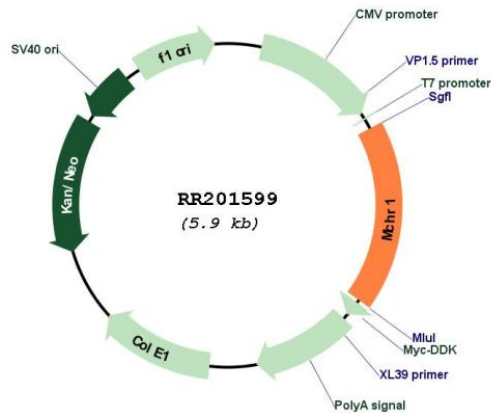
**Restriction Sites:**

SgfI-MluI

**Cloning Scheme:**



**Plasmid Map:**



**ACCN:**

NM\_031758

<b>ORF Size:</b>	1059 bp
<b>OTI Disclaimer:</b>	The molecular sequence of this clone aligns with the gene accession number as a point of reference only. However, individual transcript sequences of the same gene can differ through naturally occurring variations (e.g. polymorphisms), each with its own valid existence. This clone is substantially in agreement with the reference, but a complete review of all prevailing variants is recommended prior to use. <a href="#">More info</a>
<b>OTI Annotation:</b>	This clone was engineered to express the complete ORF with an expression tag. Expression varies depending on the nature of the gene.
<b>Components:</b>	The ORF clone is ion-exchange column purified and shipped in a 2D barcoded Matrix tube containing 10ug of transfection-ready, dried plasmid DNA (reconstitute with 100 ul of water).
<b>Reconstitution Method:</b>	<ol style="list-style-type: none"> <li>1. Centrifuge at 5,000xg for 5min.</li> <li>2. Carefully open the tube and add 100ul of sterile water to dissolve the DNA.</li> <li>3. Close the tube and incubate for 10 minutes at room temperature.</li> <li>4. Briefly vortex the tube and then do a quick spin (less than 5000xg) to concentrate the liquid at the bottom.</li> <li>5. Store the suspended plasmid at -20°C. The DNA is stable for at least one year from date of shipping when stored at -20°C.</li> </ol>
<b>RefSeq:</b>	<a href="#">NM_031758.1</a> , <a href="#">NP_113946.1</a>
<b>RefSeq Size:</b>	1214 bp
<b>RefSeq ORF:</b>	1062 bp
<b>Locus ID:</b>	83567
<b>UniProt ID:</b>	<a href="#">P97639</a>
<b>Cytogenetics:</b>	7q34
<b>MW:</b>	39.1 kDa
<b>Gene Summary:</b>	receptor for melanin-concentrating hormone (MCH); may mediate intracellular Ca <sup>2+</sup> levels, forskolin-stimulated cyclic AMP production, and activation of mitogen-activated protein kinase; may play role in energy homeostasis [RGD, Feb 2006]