

Product datasheet for **RR201595**

Mcm10 (NM_001107366) Rat Tagged ORF Clone

Product data:

Product Type:	Expression Plasmids
Product Name:	Mcm10 (NM_001107366) Rat Tagged ORF Clone
Tag:	Myc-DDK
Symbol:	Mcm10
Vector:	pCMV6-Entry (PS100001)
E. coli Selection:	Kanamycin (25 ug/mL)
Cell Selection:	Neomycin



[View online »](#)

ORF Nucleotide Sequence:

>RR201595 representing NM_001107366
 Red=Cloning site Blue=ORF Green=Tags(s)

TTTTGTAATACGACTCACTATAGGGCGGCCGGGAATTCGTCGACTGGATCCGGTACCGAGGAGATCTGCC
 GCC**GCGATCGCC**

ATGAATGTGGAGGAAGACGACTTGTGTGTACTGACATCTCTGCTGGAGGAGAACGAGGCAGCAGCCGTGC
 CCTGTGGCTCGGAGGAGAATGAGAAGTCCCTCGTCTCTGGAGGAAGGTGACCCTGATGAATTCGATGAGCT
 TTTTGATGCTGACGGCGATGGTGAATCTTACACAGAAGAGGCCGACAGTGGGGAAGAGGAAAGACCAGG
 GACCAGGAGGAACGGTTGGCCACTCTCTTTGGTGTGTGGAGGACCTAACAGATGATGAAGTTCTACAT
 CGCAAGTTGAAGACAGCAGTGTCCCCCTGCTCTGTTGCGAGCCGAGAGAAAACCAATCAGGAGTTGCA
 AGATGAATTGAAGAAGTTGCAAGAGCAGATGAAATCCTTACAGGAGCAGCTCAAAGCTGCATCACTTCAA
 CAGCCTCAAAGTTCAGCCCTTTGCACGAACACCTGGTGCATCTCTGCGGCCCCACCTCAGGAGAAGA
 AAGTTAGGAGAATTCAGGAGTCGGTGTGCTTTTCTGCAGAGCTTGTGTCCTGCCTTACCCAGAGCCAA
 GCGGGTGGCTCGAGTGCCAAAGACTCCTGCAGAGTCATCTTCAAGGACAAGTGCACCCTCACAACCACTG
 CGGGTTATTTCCAGTTTCTTAGAGCCTAAAAGCTCTCCGGCTAGGTCAACAAGCATAACCCTCACCTCAAG
 CTGTTCTGGAACAAATGCAGTGGGATGACTAAAAATCAAAGCAAGGCAACCCCGGGAATCTGGGGA
 GCCGTCCCGCAGGTTCCCGAGGCTCTGTGGAAGCTTTCTCAGGCCACGCCTCAGCGGCCCTCGAGTC
 TCCTCCACAGAGATGAACAGGAAGATGACAGGTCGGAACTGATCAGACTGTCTCAGATCAAGGAGAAGA
 TGGCGACGGAGAACCTGGAAGAGACAGATTGGGTGACATTTGGGGTTATCCTGAGGAAGGTCACGCCACA
 GAGCGTAACAGTGGGAAAACGTTTAGCATCTGGAACGTAACGACCTTCGTGACCTGACCAATGTGTG
 TCCTTGTCTGTTTGGAGATGTTACAAAAGCTCTGGAAGACAGAGCAAGGACTGTCATAGGGTTGC
 TCAACGCAAATCCCATGAAGCCCAAAGAAGGCTTGACGGAGGTGTGCTTATCTATCGATCATCTCAAAA
 AGTCTTAATTATGGGAGAAGCTATGGATCTGGGACCTGTAAAGCCAAGAAGAAGAAATGGAGAGCCGTGC
 ACACAGACAGTCAACTTGCATGACTGTGAGTACTGCCAGTATCATATCCAGGCCAGTACAAGAAGCTTA
 GTGCAAAGCGGTCCGATCTGCAGTCCACTTTCTCCGGGGACGGATTCCAAGAAGTTCCGAGAGGCAC
 CAGCCTGAAGGAGCGGCTGTGTCAAGATGGTTTCTACTACGGCGGGTTTCTTCAAGATCTTCCGAGCC
 TCCATGGCGCAGCCATTGCTCCTAAGAAGAAGGTTCAAACCACGCTGACCAATCTGTTGTGAGGGGCA
 CACGCTCAGTCAACAGGAAACAAAACAGAAGCTGGGAATCCCGAGAAGAGCTGTCTTGTCTCAGAGGA
 GTTCAGGGAATTGATGGCCCTGCCACATTTGGAGCCAGAACTTACAAAAGCATTTAGCCAGAGCCAAAG
 TCCTCAGGAGGCCCAAACCTGCCATCCAGTCCATCTCAGCATCGGCCCTTGAAGCAGCAGAAACACC
 AGATGCTGGAATGCGGAAGAGGAAATCAGAAGAAATACAGAAACGGTTCCTCCAGTCTCAAGTGAAGT
 CCAGAGCGCAGCAGTCCGCTCCTCTCGACAGCCTGCTGCCAGTCCCTCGAACTGGGGCTGAGTTC
 CCCAGGTTGGAAGGAACGGAGGCCCGTGGACGCCAAGCTGGGCAGAGGCATCTCAGATGGGGACGACG
 TTCTCTTCTTTGATGAATCACCACCACAAAACCAAAGCTGAGCGCAGCAGCAGAAGCTAAAAAGTTAGC
 TGCTATTTCAAATTTAGGGCAAAGGCCAGATTCTTACAAAAGTAGATCCAAACAATATTGTAAGGAGG
 CAAATGGACCCCGAGATGTGCTGGCGTGAAGGAGCGTGCAGAGAACAGCAACACGGTTTCTCCTGAAG
 ATGAACGGAGCCCGCCAGGAAGAAAAGGAGAGAGCAGCTTGCCTACTTAGAGTCGGAGGAATTTAGAA
 AATCCTAAAAGCAAAGTCCAAGCACACAGACGTCCTGAAAGAGGCCGAGGCTGAGCTACAGAAATCCTAT
 TTTGATCCAATGGTGAAAAAAGAACAGATGGAAGAAAAGATGAGAGCCGTCGCGAAGTGAAGTCCCGG
 TGGTGACGTGCAGGAAGTGTGCCTACACCCACTTCAAGCCTCTGGAGACCTGTGTGAGTGAACAGCATAA
 CCTCCTGACATGATGGTGTGAAAAGGTTTTTCAAATGTCTTGTGAAAACAGGACTATCTCCTGGAC
 AAGCTCCCAAACAAGCACTGCCGTAAGTGTGGCTCTACAAGTGGGAACGGGATGGAATGCTAAAGGAGA
 AGACTGGTCAAAGATCGGAGGAGAAACCTGCTGCCACGAGGGGAAGAGCACGCTAAGTTTCTCAACAG
 CCTTAA

ACGCGTACGCGGCCGCTCGAGCAGAACTCATCTCAGAAGAGGATCTGGCAGCAAATGATATCTGGATT
 ACAAGGATGACGACGATAAGGTTTAA

Protein Sequence: >RR201595 representing NM_001107366
 Red=Cloning site Green=Tags(s)

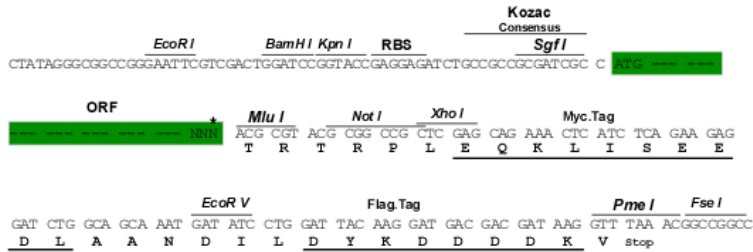
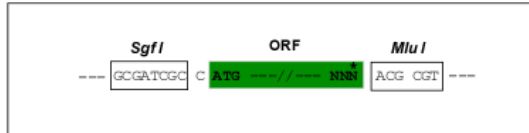
MNVEEDDLCVLTSLLEENEAAPVPCGSEENEKSSSLEEGDPDEFDELFDADGDGESYTEEADSGEEGKTR
 DQEERLATLFGDVEDLTDDEVPTSQVEDSSVPPAPVRSREKTNQELQDELKKLQEQMKSLEQLKAASLQ
 QPPSSAPLHEPPGASLRPPPQEKVRRIQESVCFSAELDVPALPRAKRVARVPKTPAESSTRTSAPSQPL
 RVISSFLEPKSSPARSTSIPSPQAVPGNKCSGMTKNQSKATPGNPGEPSPQVPQVSVEAFSGLRLRRPRV
 SSTEMNRKMTGRKLIRLSQIKEKMATENLEETDWTFGVILRKVTPQSANSKGTFISIWKLNLDLRLTQCV
 SLFLFGDVHKDLWQTEQGTVIGLLNANPMKPKEGLTEVCLSIDHPQKVLIMGEAMD LGTCKAKKNGEPC
 TQTVNLHDCEYCYHIQAQYKLSAKRSDLQSTFSGGRIPKKFRRGTS LKERLCQDGFYGGVSSSESFAA
 SMAAAIAPKKKQTTLTNLVVRGTRSVIQETKQKLGIPQKSLSCSEEFRELMALPTFGARNLQKHLARAK
 SSGSPKPAIQSISASALLKQKQHQMLEMRKRKSEEQKRFLQSSSEVQSAAVPSSSRQPAQSPRTGAEF
 PRLEGTEAPWTPKLRGISDGDVLFDESPPPKPKLSAAAEAKKLAISKLRAGQILTKVDPNNIVRR
 QMDPRDVLGVKERAENSNTVSPEDLEPARKKRREQLAYLESEEFQKILKAKSKHTDVLKEAEELQKSY
 FDPLVKKEQMEEMRAVREVKCRVVTCKRCAYTHFKPLETCVSEQHNLHWHGDKVRFKCPGCGNRTISLD
 KLPNKHCRNCGLYKWERDGMLEKTKGPIGGETLLPRGEEHAKFLNSLK

TRTRPLEQKLISEEDLAANDILDYKDDDDKV

Restriction Sites: Sgfl-MluI

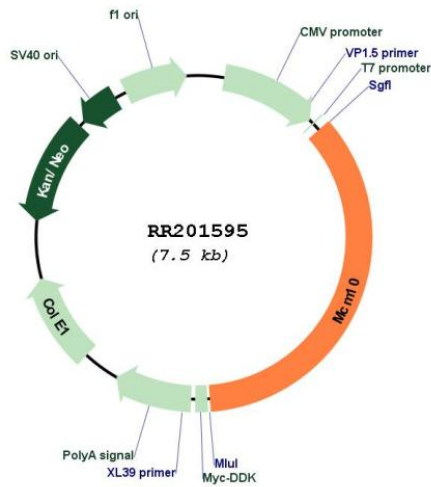
Cloning Scheme:

Cloning sites used for ORF Shuttling:



* The last codon before the Stop codon of the ORF

Plasmid Map:



ACCN:	NM_001107366
ORF Size:	2667 bp
OTI Disclaimer:	The molecular sequence of this clone aligns with the gene accession number as a point of reference only. However, individual transcript sequences of the same gene can differ through naturally occurring variations (e.g. polymorphisms), each with its own valid existence. This clone is substantially in agreement with the reference, but a complete review of all prevailing variants is recommended prior to use. More info
OTI Annotation:	This clone was engineered to express the complete ORF with an expression tag. Expression varies depending on the nature of the gene.
Components:	The ORF clone is ion-exchange column purified and shipped in a 2D barcoded Matrix tube containing 10ug of transfection-ready, dried plasmid DNA (reconstitute with 100 ul of water).
Reconstitution Method:	<ol style="list-style-type: none">1. Centrifuge at 5,000xg for 5min.2. Carefully open the tube and add 100ul of sterile water to dissolve the DNA.3. Close the tube and incubate for 10 minutes at room temperature.4. Briefly vortex the tube and then do a quick spin (less than 5000xg) to concentrate the liquid at the bottom.5. Store the suspended plasmid at -20°C. The DNA is stable for at least one year from date of shipping when stored at -20°C.
RefSeq:	NM_001107366.1 , NP_001100836.1
RefSeq Size:	3945 bp
RefSeq ORF:	2670 bp
Locus ID:	307126
Cytogenetics:	17q12.3
MW:	99 kDa