

Product datasheet for **RR201585**

Vdac3 (NM_031355) Rat Tagged ORF Clone

Product data:

Product Type: Expression Plasmids
Product Name: Vdac3 (NM_031355) Rat Tagged ORF Clone
Tag: Myc-DDK
Symbol: Vdac3
Vector: pCMV6-Entry (PS100001)
E. coli Selection: Kanamycin (25 ug/mL)
Cell Selection: Neomycin
ORF Nucleotide Sequence: >RR201585 representing NM_031355
Red=Cloning site Blue=ORF Green=Tags(s)

TTTTGTAATACGACTCACTATAGGGCGGCCGGAATTCGTCGACTGGATCCGGTACCGAGGAGATCTGCC
GCC**CGATCGC**C

ATGTGTAGCACACCAACTTACTGCGACCTAGGAAAGGCTGCCAAGGATGTCTTTAACAAAGGGTATGGGT
TTGGCATGGTCAAATAGATCTGAAAACCAAGTCTTGTAGTGGAGTGGAAATTTCTACTTCTGGTCATGC
TTATACTGATACAGGAAAGCATCAGGCAACCTAGAGACCAAATAAAGGTCTGTAACACGGGCTCATC
TTCACCCAAAAGTGAATACAGACAATACTCTTGGGACAGAAATCTCTTGGGAGAATAAGTTGGCTGAAG
GGTTGAAACTGACGGTTGATACCATATTTGTACCAAACACAGGGAAGAAGAGTGGGAAATTAAGGCCTC
CTATAGACGGGATTGTTTTAGTGTGGGCAGTAAGGTTGACATAGATTTTTCTGGACCGACCATCTATGGC
TGGGCCGTGTTGGCCTTTGAAGTTGGCTTGCTGGCTACCAGATGAGTTTTGACACAGCCAAATCCAAAC
TGTGTCAGAATAATTTGCTCTTGGTTACAAGGCTGAAGACTTCCAACCTGCATACTCATGTAACGATGG
CACTGAATTTGGAGGCTCCATCTACCAGAGAGTAAATGAGAAGATCGAAACATCAATAAACCTGGCATGG
ACAGCTGGCAGCAACAACACTCGTTTTGGCATCGCTGCTAAGTATAGGCTGGATTGTAGAATCTCTGT
CTGCCAAAGTAAACAATGCCAGTTTAATTGGACTGGGTTATACGCAGAGTCTCCGACCGGGAGTCAAAC
GACCCTGTGAGCTTTAGTGGATGAAAGAATCAATGCAGGAGGCCACAAGGTTGGCTTGGATTGAA
CTGGAAGCT

ACGCGTACGCGGCCGCTCGAGCAGAAACTCATCTCAGAAGAGGATCTGGCAGCAAATGATATCCTGGATT
ACAAGGATGACGACGATAAGGTTTAA



[View online »](#)

Protein Sequence: >RR201585 representing NM_031355
Red=Cloning site Green=Tags(s)

MCSTPTYCDLGKAAKDVFNKGYGFGMVKIDLKTSCSGVEFSTSGHAYTDTGKASGNLETKYKVCNYGLI
 FTQKWNTDNTLGTETISWENKLAEGLKLTVDITFVPNTGKKSGLKASYRRDCFVSGSKVDIDFSGPTIYG
 WAVLAFEGWLAGYQMSFDTAKSKLCQNNFALGYKAEDFQLHHTVNDGTEFGGSIYQRVNEKIETSINLAW
 TAGSNNTRFGIAAKYRLDCRTSLSAKVNNASLIGLGYTQSLRPGVKLTL SALVDGKNFNAGGHKVLGLGFE
 LEA

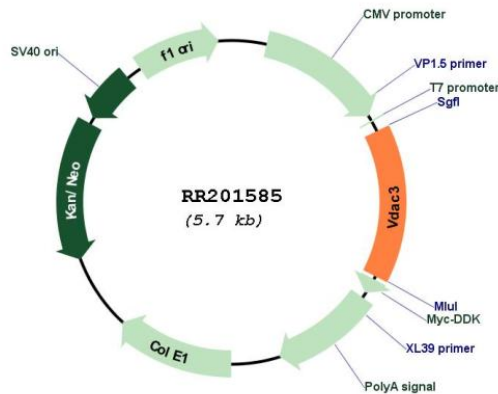
TRTRPLEQKLISEEDLAANDILDYKDDDDKV

Restriction Sites: SgfI-MluI

Cloning Scheme:



Plasmid Map:



ACCN: NM_031355

ORF Size:	849 bp
OTI Disclaimer:	The molecular sequence of this clone aligns with the gene accession number as a point of reference only. However, individual transcript sequences of the same gene can differ through naturally occurring variations (e.g. polymorphisms), each with its own valid existence. This clone is substantially in agreement with the reference, but a complete review of all prevailing variants is recommended prior to use. More info
OTI Annotation:	This clone was engineered to express the complete ORF with an expression tag. Expression varies depending on the nature of the gene.
Components:	The ORF clone is ion-exchange column purified and shipped in a 2D barcoded Matrix tube containing 10ug of transfection-ready, dried plasmid DNA (reconstitute with 100 ul of water).
Reconstitution Method:	<ol style="list-style-type: none">1. Centrifuge at 5,000xg for 5min.2. Carefully open the tube and add 100ul of sterile water to dissolve the DNA.3. Close the tube and incubate for 10 minutes at room temperature.4. Briefly vortex the tube and then do a quick spin (less than 5000xg) to concentrate the liquid at the bottom.5. Store the suspended plasmid at -20°C. The DNA is stable for at least one year from date of shipping when stored at -20°C.
RefSeq:	NM_031355.1 , NP_112645.1
RefSeq Size:	1380 bp
RefSeq ORF:	852 bp
Locus ID:	83532
UniProt ID:	Q9R1Z0
Cytogenetics:	16q12.5
MW:	30.8 kDa
Gene Summary:	a mitochondrial porin [RGD, Feb 2006]