

## Product datasheet for **RR201580**

### **Bdkrb1 (NM\_030851) Rat Tagged ORF Clone**

#### Product data:

**Product Type:** Expression Plasmids  
**Product Name:** Bdkrb1 (NM\_030851) Rat Tagged ORF Clone  
**Tag:** Myc-DDK  
**Symbol:** Bdkrb1  
**Synonyms:** b1bkr; Bdkrb; BKR  
**Vector:** pCMV6-Entry (PS100001)  
**E. coli Selection:** Kanamycin (25 ug/mL)  
**Cell Selection:** Neomycin  
**ORF Nucleotide Sequence:** >RR201580 representing NM\_030851  
**Red=Cloning site Blue=ORF Green=Tags(s)**

TTTTGTAATACGACTCACTATAGGGCGGCCGGAATTCGTCGACTGGATCCGGTACCGAGGAGATCTGCC  
GCC**GCGATCGCC**

ATGGCGTCCGAGGTCTTGTGGAGCTCCAGCCCTAACCGAAGCCTGCAGGCCCTGCCAACATTACCT  
CCTGCGAGAGTGCCTAGAAGACTGGGACTGCTGTATCGGGTGTGCCAGGGTTCGTCATCACTATCTG  
CTTCTTTGGCCTCTGGGGAACCTTTAGTCTTGTCTTCTTCTTTGCCTTGGCGACAGTGGTGGTGG  
CAGCAACGACAGAGGCAGCAGCGCTTAACCATAGCGGAAATCTACCTGGCTAACTTGGCGCTTCCGATC  
TGGTGTGGTCTGGCCTGCCCTTCTGGGCAGAGAACATCGGGAACCGTTTCAACTGGCCCTTCGGAAC  
TGACCTCTGCCGGGTGGTCAGCGGGTCAAGGCCAACCTGTTTGTGTCAGCATCTTCTGGTGGTGGCT  
ATCAGTCAGGACCGCTACAGGCTCCTGGTATACCCATGACCAGCTGGGGTACCGGCGGACGGCAAG  
CCAAGCTACGTGCTGCTCATCTGGGTAGCCGGGGTCTCTTGAGCATCCCCACATTCTTCTACGCTC  
TGTTAAAGTCGTCCCGATCTGAACGCTCTGCCTGCATCCTGCTTTCCCCACGAGGCTTGGCACTTT  
GCAAGGATGGTGGAGTTGAACGTTTTGGGTTTCTCTCCCGTGACTGCTATCATCTTCTCAACTATC  
ACATCTGGCCTCCCTGAGAGGACAGAAGGAGCCAGCAGGACTAGGTGTGGGGTCCCAAGGGCAGCAA  
GACGACGGGGCTGATCCTCACACTGGTAGCCTCCTTCTGGTCTGCTGGTCCCTTACCACTTCTTCGCT  
TTCTGGATTTCTGGTCCAGGTAAGAGTGATCCAGGACTGCTCCTGGAAGGAGATCACAGACCTGGGCC  
TGCAGCTCGCAACTTCTTTGCCTTTGTCAACAGCTGCTTGAACCACTGATTTATGTCTTCGAGGCC  
GCTCCTTAAGACCAGGTTCTGGGGACTTTA

**ACGCGT**ACGCGGCCGCTCGAGCAGAAACTCATCTCAGAAGAGGATCTGGCAGCAATGATATCCTGGATT  
ACAAGGATGACGACGATAAGGTTTAA



[View online »](#)

**Protein Sequence:** >RR201580 representing NM\_030851  
 Red=Cloning site Green=Tags(s)

MASEVLLLELQPSNRSLQAPANITSCESALEDWDLLYRVLPGFVITICFFGLLGNLLVLSFFLLPWRQWWW  
 QQRQRQRLTIAEIIYLANLAASDLVFLGLPFWAENIGNRFNWPFGTDLCRVVSQVIKANL FVSIFLVVA  
 ISQDRYRLLVYPMTSWG YRRRRQAQATCLLIWVAGLLSIPTFLLRSVKVVPDLNVSACILLFPHEAWHF  
 ARMVELNVLGFLLPVTAIIFFNHYILASLRGQKEASRTRCGGPKGSKTTGLILTIVASFVLCWCPYHFFA  
 FLDFLVQVRVIQDCSWKEITDLGLQLANFFAFVNSCLNPLIYVFAGRLLKTRVLGTL

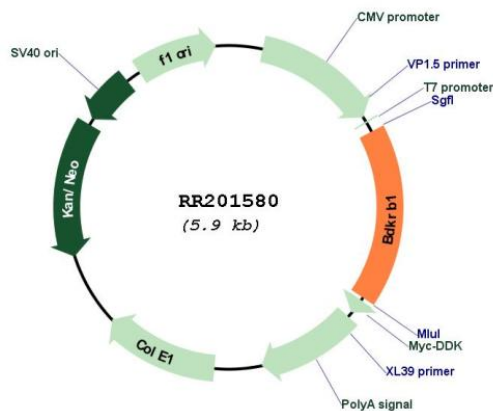
TRTRPLEQKLISEEDLAANDILDYKDDDDKV

**Restriction Sites:** SgfI-MluI

**Cloning Scheme:**



**Plasmid Map:**



**ACCN:** NM\_030851

**ORF Size:** 1011 bp

**OTI Disclaimer:** Due to the inherent nature of this plasmid, standard methods to replicate additional amounts of DNA in E. coli are highly likely to result in mutations and/or rearrangements. Therefore, OriGene does not guarantee the capability to replicate this plasmid DNA. Additional amounts of DNA can be purchased from OriGene with batch-specific, full-sequence verification at a reduced cost. Please contact our customer care team at [custsupport@origene.com](mailto:custsupport@origene.com) or by calling 301.340.3188 option 3 for pricing and delivery.

The molecular sequence of this clone aligns with the gene accession number as a point of reference only. However, individual transcript sequences of the same gene can differ through naturally occurring variations (e.g. polymorphisms), each with its own valid existence. This clone is substantially in agreement with the reference, but a complete review of all prevailing variants is recommended prior to use. [More info](#)

**OTI Annotation:** This clone was engineered to express the complete ORF with an expression tag. Expression varies depending on the nature of the gene.

**Components:** The ORF clone is ion-exchange column purified and shipped in a 2D barcoded Matrix tube containing 10ug of transfection-ready, dried plasmid DNA (reconstitute with 100 ul of water).

**Reconstitution Method:**

1. Centrifuge at 5,000xg for 5min.
2. Carefully open the tube and add 100ul of sterile water to dissolve the DNA.
3. Close the tube and incubate for 10 minutes at room temperature.
4. Briefly vortex the tube and then do a quick spin (less than 5000xg) to concentrate the liquid at the bottom.
5. Store the suspended plasmid at -20°C. The DNA is stable for at least one year from date of shipping when stored at -20°C.

**RefSeq:** [NM\\_030851.1](#), [NP\\_110478.1](#)

**RefSeq Size:** 1312 bp

**RefSeq ORF:** 1014 bp

**Locus ID:** 81509

**UniProt ID:** [P97583](#)

**Cytogenetics:** 6q32

**MW:** 38.4 kDa

**Gene Summary:** may play a role in regulation of inflammatory response [RGD, Feb 2006]