

Product datasheet for **RR201560**

Scn7a (NM_031686) Rat Tagged ORF Clone

Product data:

Product Type: Expression Plasmids
Product Name: Scn7a (NM_031686) Rat Tagged ORF Clone
Tag: Myc-DDK
Symbol: Scn7a
Synonyms: Na-G; Scn6a
Vector: pCMV6-Entry (PS100001)
E. coli Selection: Kanamycin (25 ug/mL)
Cell Selection: Neomycin
ORF Nucleotide Sequence: >RR201560 representing NM_031686
Red=Cloning site Blue=ORF Green=Tags(s)

TTTTGTAATACGACTCACTATAGGGCGGCCGGAATTCGTCGACTGGATCCGGTACCGAGGAGATCTGCC
GCC**CGGATCGCC**

ATGTTGACTTCCCAGAGCCGAAGGGCCTTGTCCTTACGGCAGAGTCACTTGAACCTATAAAAAATC
ACATTGCTAAAAATGCAACGAAGAGCATGAAGAAGAAGATTTAAACCAAGCCGGGATATAGAAGCAGG
CAAAAACTTCCATTTGCCTATGGAACCCCTTCAAGGAACCGTGTGAGAGCCCTTGGAAAGATGTGGAT
CCATACTACTATGTTAAGAGAAACTTTTCATGGTCTTAAACAGAAACAGAGTCATCTTCAGTTCAATG
CGGTTTCCATCCTCTGCACGTTGTCTCCTTTAAGCTCTCTCAGAAGAGCTGTTATCAAGTTTTGGTGCA
CCCCCTTTTGGCCTGCTGATTTAATTAGTGTCTCACCGACAGCATACTTATGTGCATGAGTAACCTA
CCGGAATGGATATTGGCAGTAGAGAATACTTGCTTGGGAATTTACACATTCGAAATACTGGTAAAAGTCA
TTGCAAGAGGTATCTGGGCAGGGTCATTTTCTTCTTGGGGATCTTTGGAAGTGGCTTGATTTCAAGTGT
AACTTTGTTTCGAGCTTATCACAAGGCTTACCTCTAAGCTCCCTTCCAATGTTTAAAACAATAAGAACC
TTGGCAATTTTGAAGATCATCCCTTTGAACCATGGCTGCAGTCTATTGTGGTGACGCTGGTCCAGTGT
TGAAGAACTACTCGGAGCCATTGCCCTAGCTGTGTTTTCTGACTGTGTCTTCGCTATTTCGGGATGGG
TCTCTTCATGGCAACCTGAAGCACAAATGTGTGCGATGGCCCCAAGAAGATGGAATGATGTGATGTAC
AGTGGAAGTGAAGCCAGTACCATATTCTAGAAAGAGAAAACCTTCTACTATATGGAAGGCCGCGAGATACG
CTCTCCTCTGCGGCAACAAGACAGATGCCGGCCTGTGTCCAGAAGTTATATGTGTGTAAGAGGGGCTC
AAATCCTGACAATGGCTTACAAGTTTTGACAATTTGGCTGGGCTCTACTGGCTATGTTTCGATTGATG
ACTCAGGATTACCCTGAATTACTTTATCACCAGATCCTTTATGCTTCAGGAAAGATCTACATGATTTTT
TTGTTCTGATCAGTTTCTGGTTTGCCTTCTATATGGCAAGTTTGTCTTGGGCATCCTCACTATGGCCTA
TGAACAGGAGAAGCAGAGAGCTTCTGAGGAGTCTAGAGACATGGATTCTAAATGCATCAGACTGTGAAA
GAATTCGAGGAAGAACATGAAGGAGCTGAGCTTCAAGTGTATCTGGTTTTATGAGGAGTTCTTGATCTAC
TTGACTTGAGCTTTGTATCAAGGAGATGGAACTACACAAATAGAAATGAAGAAAAGATCACCACCTTC
TATAAACACCACATTGGATATACTGGAAGACACTGCCCTTGGACACAAAGAAGAACCCAGAAACATCCAGG
AAGGAATGCCACTCTGTTGGTATAAGTTTACTAAAACCTGCTTTATCTGGAATGCTCTCCCTGTTGGA



TAAAACGAATGAGTTTCTGACAGAATTATAACACACCCATTGTTTGATCTTTTCCTTGTATATGCAT
CATTTTAAACATATGCTTCTGGCCCTAGAACACTTTCCAATGAGTGAGGAGCTCATGCTACTCCTTGCC
ATTGGAACCTGGTTTTTATTGGAATTTACACAATAGAAATGATTTTGAAGATAATCGCTATGCATCCAT
ATGGGTATTTCCAAATAAGCTGGCATATTTTGGACAGTATTCTTGGTGGTTTTGGGATTAACAGAAATGTT
ACTAGCAGATATTGAAGAAATACTGTTTTATATTAGTCCCATTGATATTTAAAAATGGGAAAAAT
GCACCACATTTAAGAATTTGATGCGTATTCTTGGTAGAGCATTGGTGGCCCTGAAAGACTTGGTCCCTGT
TGGTCTCCATTTTCACTTACTTCTGCGGTGTTGGCATGAAGCTGTTGGTTCGAAGTTACAAAGATTG
TGTCTGCCACGTAGATCAAGACTGTCAACGCCAACGTTGGCACATGAGTGACTTCTCCACGCCTACGTG
ACTGTGTTCCGAATCCTCTGCGGAGAGTGGATAGAGACATTATGGGAGTGTATGGAGTTGCAGGCGAGG
CCTGGTGTATTCCATTTACATGATGGTCATTTAATTGGAAATTTATTGATACTTTACCTTTTGTGGG
ATTGGTGAGCTCATTGCTTCATACGATGCTACCACAGAAGTGAGCAAAGAAGCCAAAAACCTTCAGCTT
GCAGTGGCATGGATAAAAATGGTAATAAACTGTGTGCTTCTTAAAATACTGTGCAAAGAAAAAACTGTTT
CTACAGAAGCAACAGACCAAACATGTGATCCAAGTGTAAAGAGAATATTTCTGGTCATACTCTTCTGA
ACTGAGCAACACCCAAACATTCTCAGATACAAGGACCAGAGCAGTGGTACTGAGAAAACCCAGTGACT
GAGTCTGAGAGCCAATCCCTGATTGCTAGTCCCAGTGTATCAGAACTGTCCAATTGCTTCAGGAGAAT
CCGATATAGAAAACCTGGATAACAAGGAGACTCGGAGCAAGTCTGCAAAATGGAAGCAGTAAAGAGAAAA
GAAGCAATCTAGTTCATCTGAGTGCAGCACGGTTGATATTGCTATTTCTGAAGAAGAAGAAATGGTCTAT
GAACATGAAAAGTCGAAGCTTCATAAAAATGGTTATGAACGCAAACTTCAGCTGGCCAAGTCAGTAGAG
AATCTAGGAATGGAAAGATTTGGAGGAACATAAGGAAAACCTGCTGCAAGATAGTGGAGAACAGCTGGTT
TGAGTGTTCATTGGCCCTGGTCACTCTGCTCTGCACAGGCACTCTGGCTCTGGAAGACATATATTTTCAT
CAGCGGAAAACCATTTAAAATCTTCTGGAGTATGGAGACATGATTTTGTTCATCTTCATTCTGGAGA
TGCTTCTCAAGTGGTGGCTACGGCTTTAAAGCCTACTTCTCAACAACTGGTACAAGCTGGACTTCAT
GGTCGTTATCGTGTGTCTTAGCTTAAAAGGCAAACTCGAGAGGACCTGAACCTCTGCCTCCATA
AAGTTCTTCGAGCACTTAGAGTCTGCTCAGTTTTGAAAGAATGAAGTGGTTCTGAGAGCTTTGATAA
AAACAACCTTACCCGCTGTGAGCGTGTCTGGTCTGCCTAATGATCTGGCTGCTTTTTCAGTGTATGGG
AGTGTCTTATTTCGCTGGCAAGTTCATGAATGCATTGACCCAACAAGGGGAGAAAGATTCTCTGTATTT
GAAGTTATGAATAAGAGTCAGTGTGAAAACCTGGTATTTAATGAATCAATGCCATGGGAGAATGCAAAAC
TGAACCTTGATAATGTTGAAATGGTTTTCTTTTGTTCCAAGTGGCAACATTTAATGGTGGATCAG
TATTATGAATTCAGCAATTGACTCTGTTGGTGTGTACATGCAGCCTAGTTTTGAGCACAGCCTCCACATG
TACACTACTTTATCATCTTTGTGTGTGGATTATTTCTTCCCTTGTGTATGCTGATTGGTGTATTA
TCAGGAATTTCAACAAGCAGAAAATTAAGCAGGGAGGATCAAATATCTTTATAACGGTAAAGCAGAAGAA
GCAGTACCGGGCACTGAAGAAGCTCTGTATGCAGACTCTCAGAAACCAGCAGCCCGCCCTAGAAAACAAG
TTCCAAGGCTTCATTTGTGACGTAGTAACACATCGTGTCTTAAATGTCGTGCTGCTACTTCTTATCTGTT
TCCAAGCAACAACCATTATGATACAAAATGATGAGCAGAGTCCACAAATGAAACCGCTGTCTTCTGGAT
GAACTCCCTTTTTACCATGCTGTTCACTCTGGAATGCATACTGAAGCTCACCCGCTTCCGCTGCCACTAT
TTCACCAGCGCATGGAATGTTTCATGACTTTATGGTGGTGGTTTTCTCCATTACAGGACTGCTGCTGCCTT
TGTCATAGGACAATACTTTGTGCTCCTTCACTGGTGCAGCTGCTTCTCTCTCGCATCATCCATGT
CCTGCGTCTGGGAAAGGACCAAAGGTGTTCCATGATCTGATGCTTCCCTTGTGCTGCTCACTCCCAGCA
CTGCTCAACATTGGTCTTCTCATCTTCTGGTCTGTTTCACTACGCCATCTTTGGAATGTACAACCTCG
CCTACGTGAAGAAAGAAGCCGGAATTAATGATGTGTCCTCACTTTGAGACCTTTGGAAGCAGTATGCTTTG
TCTCTTTCAAGTTACAACATTTTCTGGTTGGGACGGGATGCTGGATGCAATTTTCAACAGTCAGTGGTCT
GACTGCGATCCTGATAAAAATTAACCCAGGGACTCAGGTCAGGGGAGACTGTGGGAGCCCTTCTGTTGGGA
TTTTTTATTTTGTGAGTTACATCCTCATATCATGGTTGATCATTGTTAATATGTACGTTGTTTTGATCAT
GGAGTTCTTAAGTATTCCTTCTAAGAGAAAAACAGGACCTTGAGCGAAGATGACTTTAGGAGATTCTTC
AAGGTATGGAACAGGTTTACCCTGACAGGACCCAGTACATAGACTCTACTAAGCTTTCTGATTTTGCAG
CTGCTCTCGATCCTCCTTTTTCATGGCAAAACCAACAAGGGCCAGCTGTAGCCATGGATCTCCCAT
GGCTGCAGGAGACAGAATCCATTGCCTTGATATTTGCTTGCCTTACGAAAAGAGTGATGGGAAAGGAT
GAGCGGGTGGAGAAGATCCTTTACAGAGATAGAATCTGGGTTTATGTTAGCGAACCTTTCAAATACGT
ATGAGCCGATTACAACGACTTTGAAACGCAAAACAAGAGGCAGTCTCAGCCACTATCATCCAGCGGCATA
CAAAGTTACCGCTTAAGGCAAAGTGACAAAAGATACAAGATATCCCGGAAATAGATGATGGCAGGGAG
GATCCTAACTCTAAAGGTGTCCACTCTGGTCAAATCGAGGAAAAGGCATCTATTCAGACCCAGATC

ACGCGTACGCGGCCGCTCGAGCAGAAACTCATCTCAGAAGAGGATCTGGCAGCAAATGATATCCTGGATT
ACAAGGATGACGACGATAAGGTTAA

Protein Sequence:

>RR201560 representing NM_031686
Red=Cloning site Green=Tags(s)

MLTSPEPKGLVPFTAESLELIKNIHAKKCNEEHEEEDLKPSRDIEAGKLPFAYGTL PQGTVSEPLEDVD
PYYVVKRNTFMVLNRNRVIFRFNAVSILCTL SPLSSLRRAVIKVLVHPLLRLLLIISVL TDSILMCMNSL
PEWILAVENTCLGIYTFEILVKVIARGIWAGSFSLGDLWNWLDVSVTLFELITRSSPLSSLPMTKIRT
LRILKIIPLNHGLQSIIVVTLVQCLKLLGAIALALFFLTVSSLFMGFLMGNLKHKCVRWQPQEDGNDVMY
SGTGSQYHILERENFYMEGARYALLCGNKTDAGLCEGYMCVKEGSPNDNGFTSFDNFGWALLAMFRLM
TQDYPELLYHQILYASGIYMIFFVLISFWFAFYMASLFLGIL TMAYEQEKORASEESRDMSKCHQTVK
EFEEEHEGAELQCIWFYEEVLDLLGLELCIKEMETTQIEMKKRSPTSINTTLDILED TALGHKEEPETSR
KECPLCWYKFTKTCFIWKCSPCWIKLNEFADRIITHPLFDLFLVICIILNICFLALEHFPMSLEMSLLA
IGNLVFIGIYTIEMILKIIAMHPYGYFQISWHIFDSILVVLGLTEMLLADIEEITVFILVPLIFIKLGKY
APPFKNLMRILGRALVALKDLVLLVSIYFSAVFGMKLFGRSYKDCVCHVDQDCQRQRWHMSDFLHAYV
TVFRILCGEWIETLWECMEVAGEAWCIPFYMMVILIGNLLILYLFVGLVSSFASYDATTEVSKEAKNLQL
AVAWIKMVINCVLLKILCKEKTVSTEATDQTCDPVKNISGHTLSELSNTQTFRLYKQDQSSGTEKTPVT
ESESQSLIASPSVSETVPIASGESDIENLDNKETRKSANGSSKEKMKQSSSECSTVDIAISEEEEMVY
EHEKSKLHKNYERKSSAGQVSRESRNGKIWRNIRKTCCKIVENSWFECF IGLVTLCTGT LALEDIYIH
QRKTIKIFLEYGDMIFAYIFILEMLLKWVAYGFKAYFSNNWYKLD FMVVI V LCLSLKGTREDLNPLPSI
KFLRALRVLSQFERMKVLRALIKTTLPVSVFLVCLMIWLLFSVMGVFLFAGKFYECIDPTRGERFSVF
EVMNKSQCENLVFNE SMPWENAKLNF DN VNGF LSLFQVATFNGWISIMNSAIDS VGVYMQPSFEHSLHM
YTYFII FV VFGFLPLCMLIGV IIRNFNKQKIKQGGSNIFITVKQKQYRALKKLLYADSQKPAARPRNK
FQGFICDVVTHR VFNVVVLLICFQATTIMI QNDEQSPQIETAVFWMNSLFTMLFTLECILKLTAFRCHY
FTSAWNVHDFMVVVSITGLLLPLSIGQYVPPSLVQLLLL SRIHVLRPGKGPVFHDLMLPLMLSLPA
LLNIGLLIFLVMFIYAIFGMYNFAYVKEAGINDVSNFETFGSSMLCLFQVTTFSWGDGMLDAIFNSQWS
DCDPDKINPGTQVRGDCGSPSVGIFYFVSYILISWLIIVNMYVVLIMEFLSIPSKRKNRTLSEDDFRFF
KVVNRFPDRTQYIDSTKLSDFAAALDPPLFMAKPNKGQLVAMDLPMAAGDRIHCLDILLAFTRKVMGKD
ERVEKILSEIESGFMLANPFKITYEPITTTLRKQEA VSATIIQRAYKSYRLRQSDKKIQDIPEIDDDGRE
DPNSKGVHSGQIEEKASIQTQI

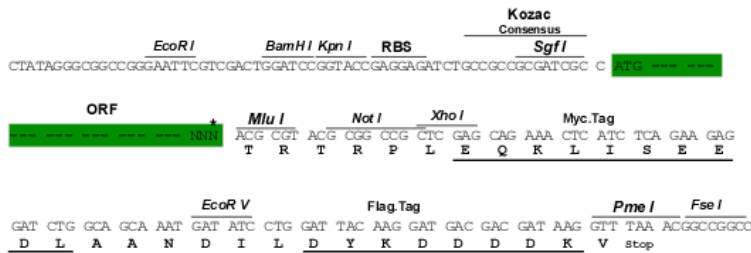
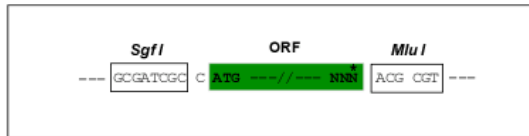
TRTRPLEQKLISEEDLAANDILDYKDDDDKV

Restriction Sites:

SgfI-MluI

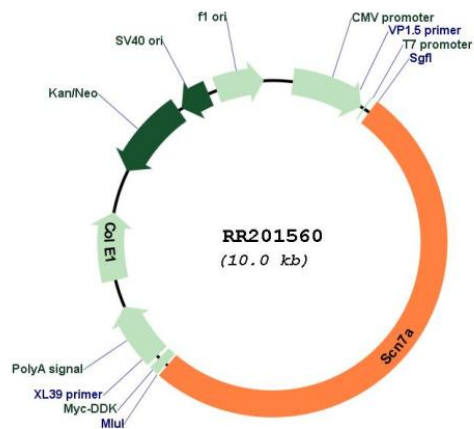
Cloning Scheme:

Cloning sites used for ORF Shuttling:



* The last codon before the Stop codon of the ORF

Plasmid Map:



ACCN: NM_031686

ORF Size: 5106 bp

OTI Disclaimer: The molecular sequence of this clone aligns with the gene accession number as a point of reference only. However, individual transcript sequences of the same gene can differ through naturally occurring variations (e.g. polymorphisms), each with its own valid existence. This clone is substantially in agreement with the reference, but a complete review of all prevailing variants is recommended prior to use. [More info](#)

OTI Annotation: This clone was engineered to express the complete ORF with an expression tag. Expression varies depending on the nature of the gene.

Components:	The ORF clone is ion-exchange column purified and shipped in a 2D barcoded Matrix tube containing 10ug of transfection-ready, dried plasmid DNA (reconstitute with 100 ul of water).
Reconstitution Method:	<ol style="list-style-type: none">1. Centrifuge at 5,000xg for 5min.2. Carefully open the tube and add 100ul of sterile water to dissolve the DNA.3. Close the tube and incubate for 10 minutes at room temperature.4. Briefly vortex the tube and then do a quick spin (less than 5000xg) to concentrate the liquid at the bottom.5. Store the suspended plasmid at -20°C. The DNA is stable for at least one year from date of shipping when stored at -20°C.
RefSeq:	<u>NM_031686.1, NP_113874.1</u>
RefSeq Size:	6556 bp
RefSeq ORF:	5109 bp
Locus ID:	64155
Cytogenetics:	3q21
MW:	194.7 kDa
Gene Summary:	glial Na-channel alpha subunit [RGD, Feb 2006]