

Product datasheet for **RR201536**

Apobec1 (NM_012907) Rat Tagged ORF Clone

Product data:

Product Type: Expression Plasmids
 Product Name: Apobec1 (NM_012907) Rat Tagged ORF Clone
 Tag: Myc-DDK
 Symbol: Apobec1
 Synonyms: apobec-1; REPR
 Vector: pCMV6-Entry (PS100001)
 E. coli Selection: Kanamycin (25 ug/mL)
 Cell Selection: Neomycin
 ORF Nucleotide Sequence: >RR201536 representing NM_012907
 Red=Cloning site Blue=ORF Green=Tags(s)

TTTTGTAATACGACTCACTATAGGGCGGCCGGAATTCGTCGACTGGATCCGGTACCGAGGAGATCTGCC
 GCC**CGATCGC**C

ATGAGTCCGAGACAGGCCCTGTAGCTGTTGATCCCACTCTGAGGAGAAGAATTGAGCCCCACGAGTTTG
 AAGTCTTCTTTGACCCCCGGAACTTCGAAAAGAGACCTGTCTGCTGTATGAGATCAACTGGGGAGGAAG
 GCACAGCATCTGGCGACACAGGCCAAAACACCAACAAACACGTTGAAGTCAATTTTCATAGAAAAATTT
 ACTACAGAAAGATACTTTTGTCCAAACACCAGATGCTCCATTACCTGGTTCTGTCTGGAGTCCCTGTG
 GGGAGTGTCTCCAGGGCCATTACAGAATTTTGTAGCCGATACCCCATGTAACCTCTGTTTATTTATATAGC
 ACGGCTTTATCACCACGCAGATCCTCGAAATCGGCAAGGACTCAGGGACCTTATTAGCAGCGGTGTTACT
 ATCCAGATCATGACGGAGCAAGAGTCTGGCTACTGCTGGAGGAATTTGTCAACTACTCCCTTCGAATG
 AAGTCAATTGGCCAAGGTACCCCATCTGTGGGTGAGGCTGTACGTAAGTCAACTCACTGATCATTTTT
 AGGACTCCACCCTGTTTAAATATTTAAGAAGAAAACAACCTCAACTCACGTTTTTTCACGATTGCTCTT
 CAAAGCTGCCATTACCAAAGCTACCACCCACATCCTGTGGCCACAGGTTGAAA

ACGCGTACGCGGCCGCTCGAGCAGAACTCATCTCAGAAGAGGATCTGGCAGCAAATGATATCCTGGATT
 ACAAGGATGACGACGATAAGGTTTAA



[View online »](#)

Protein Sequence: >RR201536 representing NM_012907
 Red=Cloning site Green=Tags(s)

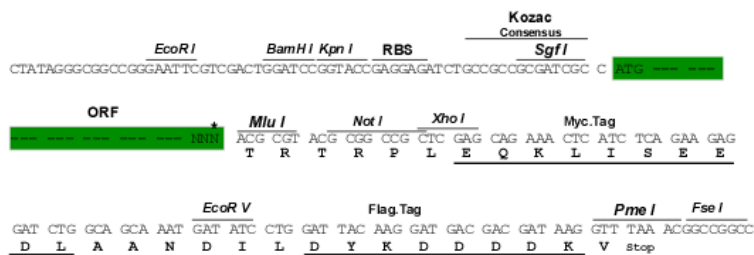
MSSETGPVAVDPTLRRRIEPHEFEVFFDPRELRKETCLLYEINWGGRHISIWRHTSQNTNKHVEVNFIEKF
 TTERYFCPNTRCSITWFLSWSPCGECSRAITEFLSRYPHVTLFIYIARLYHHADPRNRQGLRDLISSGVT
 IQIMTEQESGYCWRNFVNYSPPSNEAHPWRYPHLWVRLYVLELYCIILGLPPCLNILRRKQPQLTFFTIAL
 QSCHYQRLPPHILWATGLK

TRTRPLEQKLISEEDLAANDILDYKDDDDKV

Restriction Sites: SgfI-MluI

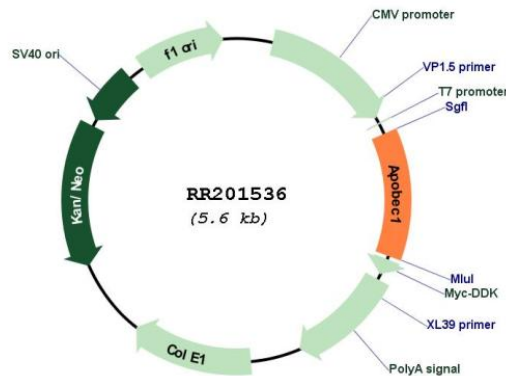
Cloning Scheme:

Cloning sites used for ORF Shuttling:



* The last codon before the Stop codon of the ORF

Plasmid Map:



ACCN: NM_012907

ORF Size: 687 bp

OTI Disclaimer: Due to the inherent nature of this plasmid, standard methods to replicate additional amounts of DNA in E. coli are highly likely to result in mutations and/or rearrangements. Therefore, OriGene does not guarantee the capability to replicate this plasmid DNA. Additional amounts of DNA can be purchased from OriGene with batch-specific, full-sequence verification at a reduced cost. Please contact our customer care team at custsupport@origene.com or by calling 301.340.3188 option 3 for pricing and delivery.

The molecular sequence of this clone aligns with the gene accession number as a point of reference only. However, individual transcript sequences of the same gene can differ through naturally occurring variations (e.g. polymorphisms), each with its own valid existence. This clone is substantially in agreement with the reference, but a complete review of all prevailing variants is recommended prior to use. [More info](#)

OTI Annotation: This clone was engineered to express the complete ORF with an expression tag. Expression varies depending on the nature of the gene.

Components: The ORF clone is ion-exchange column purified and shipped in a 2D barcoded Matrix tube containing 10ug of transfection-ready, dried plasmid DNA (reconstitute with 100 ul of water).

Reconstitution Method:

1. Centrifuge at 5,000xg for 5min.
2. Carefully open the tube and add 100ul of sterile water to dissolve the DNA.
3. Close the tube and incubate for 10 minutes at room temperature.
4. Briefly vortex the tube and then do a quick spin (less than 5000xg) to concentrate the liquid at the bottom.
5. Store the suspended plasmid at -20°C. The DNA is stable for at least one year from date of shipping when stored at -20°C.

RefSeq: [NM_012907.2](#), [NP_037039.1](#)

RefSeq Size: 1320 bp

RefSeq ORF: 690 bp

Locus ID: 25383

UniProt ID: [P38483](#)

Cytogenetics: 4q42

MW: 27.3 kDa

Gene Summary: required for post transcriptional editing of apolipoprotein B mRNA [RGD, Feb 2006]