

Product datasheet for **RR201531**

Tle4 (NM_019141) Rat Tagged ORF Clone

Product data:

Product Type:	Expression Plasmids
Product Name:	Tle4 (NM_019141) Rat Tagged ORF Clone
Tag:	Myc-DDK
Symbol:	Tle4
Synonyms:	Esp2; Grg-4
Mammalian Cell Selection:	Neomycin
Vector:	pCMV6-Entry (PS100001)
E. coli Selection:	Kanamycin (25 ug/mL)



[View online »](#)

ORF Nucleotide Sequence:

>RR201531 representing NM_019141
 Red=Cloning site Blue=ORF Green=Tags(s)

TTTTGTAATACGACTCACTATAGGGCGGCCGGGAATTCGTCGACTGGATCCGGTACCGAGGAGATCTGCC
 GCC**CGCATCGCC**

ATGATTTCGCGACCTGAGCAAGATGTACCCGACAGCGCCACCCGGCACCGCATCAGCCTGCTCAACCCCT
 TCAAAATTTACAATTTTTCAGAAATCCTGTGATCGGATTAAGGAAGAGTTTCAGTTTTTACAGGCTCAATACCA
 CAGTCTGAAGCTGGAATGTGAGAAGCTGGCCAGTGAGAAGACAGAGATGCAGCGGCATTATGTCATGAT
 TATGAAATGTCCTATGGGTTGAACATAGAAATGCACAAGCAGGCAGAGATTGTTAAACGACTAAATGCTA
 TCTGTGCACAGGTCATTCTTTCTGTCCCAAGAGCAGCAAACTCCAAGCTCAGCATTATCACATGG
 ACATGGTCTGCCTGTGCCTCTGACACCACACCCCTTCGGGGCTTCAGCCCCAGCCATTCCACCCATCGGC
 AGCAGTGCAGGACTGCTGGCCCTCTCCAGTGCAGTGGAGGTGAGTCTCACCTCCCAATTAAGGATGAGA
 AAAAGCACCATGACAATGATCACAAAGAGACAGAGACTCCATCAAGAGCTTCCGTATCCCCATCAGC
 TAGTTTTCCGAGGTTCTGAGAAACACAGGAACTCTACAGACTATTCCTCAGAGAGCAAGAAGCAGAAAACA
 GAAGAGAAGGAAATTGCAGCTCGCTATGACAGTGTGGTGAAGAGTGTGACAACCTGGTAGTTGATG
 TGTCGAATGAGGATCCATCTTCCCTCGAGGAAGCCAGCACATTCCTCAAGGGAGAATGGCCTGGACAA
 GACACGCCTCCTCAAGAAAGATGCTCCCATCAGCCCTGCTTCTGTTGCATCTTCCAGCAGTACTCCTTCC
 TCCAAATCCAAAGAGCTTAGCCTTAATGAAAAGTCTACTACTCCTGTTTCAAAGTCCAATACCCCTACTC
 CACGGACTGATGCACCTACCCCTGGCAGTAACTCTACTCCCGACTGAGGCTGTACCTGGAAAGCCACC
 AGGTGTGGACCCCTTAGCATCCAGCCTGAGGACCCCAATGGCTGTACCTGTCCATATCCAACCCCTTTT
 GGGATTGTGCCCATGCTGGGATGAATGGAGAGCTGACCAGCCCTGGAGCCGCTATGCTGGGCTCACA
 ACATCTCCCCACAGATGAGTGCAGCTGCGGCAGCGGCAGCGGCAGCGGCAGCCTATGGAAGATCACCTGT
 GGTGGGATTTGATCCACACCATCACATCGGTGTGCCAGCAATACCTCCAAACTTGACAGGATTCCAGGA
 GGAAAACCAGCATACTCCTTTACGTTAGTGCCGATGGTCAAGATGCAGCCGGTCCCTTTCCCCCTGATG
 CGCTCATTGGACCGGGAATCCCCGACATGCCCGACAGATCAACACCCCTTAACCATGGGGAAGTAGTGTG
 TGCAGTGACCATCAGCAACCCCAAGACAGTGTACACAGGTGGCAAGGGCTGTGTAAGGTCTGGGAC
 ATCAGCCATCCTGGCAACAAAAGCCAGTCTCTCAGCTGGACTGTCTGAACAGGGATAACTACATCCGCT
 CCTGCAGATTGCTCCCTGATGGCCGCACCTTAATTGTTGGAGGGGAAGCCAGTACTGTCCATCTGGGA
 CCTGGCAGCTCCAACCCACGCATCAAGGCAGAGCTGACGTCCTCAGCCCCTGCCTGCTATGCTCTGGCC
 ATCAGCCCGACTCCAAGGTCTGCTTCTCATGCTGCAGTGTGGCAACATCGCAGTGTGGGATCTGCACA
 ACCAGACTCTGGTGAGGCAATCCAGGGGCACACAGATGGAGCCAGTTGTATTGACATTTCTAACGATGG
 CACCAAGCTCTGGACAGGTGGTTTGGACAACACTGTGAGGTCTGGGACCTGCGTGAAGGGCGGCAACTG
 CAGCAACACGACTTACCTCTCAGATCTTTTCTTTGGGCTATTGCCCAACTGGAGAGTGGCTTGCAGTGG
 GGATGGAGAATAGCAATGTGGAAGTGTTCATGTACCAAGCCAGACAAAATACCAGTTGCATCTTCATGA
 GAGCTGTGTTCTGTCACTCAAGTTTGGCCACTGTGGCAAAATGGTTTGAAGCACTGGAAAGGACAACCTT
 CTGAATGCTTGGAGGACACCTTATGGGGCCAGCATCTCCAGTCCAAAGAATCCTCATCGGTGCTTAGCT
 GTGACATCTGTGGATGACAAGTACATTGTCACTGGCTCTGGGACAAGAAAGCTACGGTTTATGAAGT
 TATTTAT

ACGCGTACGCGGCCGCTCGAGCAGAAACTCATCTCAGAAGAGGATCTGGCAGCAAATGATATCCTGGATT
 ACAAGGATGACGACGATAAGGTTTAA

Protein Sequence: >RR201531 representing NM_019141
 Red=Cloning site Green=Tags(s)

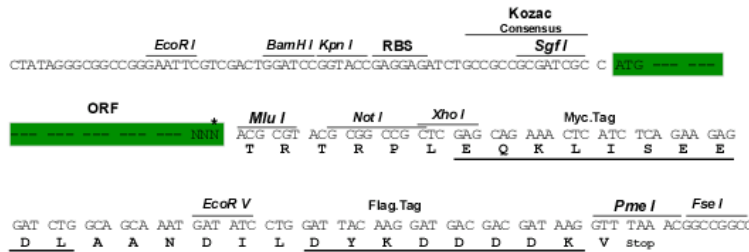
MIRDLSKMYPQTRHPAPHQPAQPFKFTISESCDRIKEEFQFLQAQYHSLKLECEKLASEKTEMQRHYVMY
 YEMSYGLNIEMHKQAEIVKRLNAICAQVIPFLSQEQQLQAQHL SHGHL PVPLTPHPSGLQPPAIPPIG
 SSAGLLALSSALGGQSHLPKDEKHHNDHQDRDRSISSSVSPSASFRGSEKHRNSTDYSSSKKQKT
 EEKEIAARYDSDGEKSDNLVVDVSNEDPSSPRGSPAHSPRENLDKTRLLKKDAPISPASVASSSSTPS
 SKSKELSLNEKSTTPVSKSNTPTPRTDAPTPGSNSTPGLRPVPGKPPGVDPPLASSLRTPMAVPCPYPTPF
 GI VPHAGMNGELTSPGAAAYAGLHNI SPQMSAAAAAAAAAAYGRSPVVGFDPHHMRVPAI PPNLTGIPG
 GKPAYSFHVSADGQMOPVFPDPDALIGPGIPRHARQINTLNHGEVVCVAVTISNPTRHYVTGGKGCVKVWD
 ISHPGNKSPVSQLDCLNRDNYIRSCRLLPDGRTLIVGGEASTLSIWDLAAPTPIKAELTSSAPACYALA
 ISPDSKVCFSCCSDGNI AVWDLHNQTLVRQFQGH TDGASCIDISNDGTLWTGGLDNTVRSWDLREGRQL
 QQHDFTSQIFSLGYCPTGEWLAVGMENSNEVLHVTKPKDYQLHLHESCVL SLKFAHCGKWFVSTGKDNL
 LNAWRTPYGASIFQSKESSVLSCDISVDDKYIVTGSGDKKATVVEVIY

TRTRPLEQKLI SEEDLAANDILDYKDDDDKV

Restriction Sites: SgfI-MluI

Cloning Scheme:

Cloning sites used for ORF Shuttling:



* The last codon before the Stop codon of the ORF

ACCN: NM_019141

ORF Size: 2247 bp

OTI Disclaimer: The molecular sequence of this clone aligns with the gene accession number as a point of reference only. However, individual transcript sequences of the same gene can differ through naturally occurring variations (e.g. polymorphisms), each with its own valid existence. This clone is substantially in agreement with the reference, but a complete review of all prevailing variants is recommended prior to use. [More info](#)

OTI Annotation: This clone was engineered to express the complete ORF with an expression tag. Expression varies depending on the nature of the gene.

Components: The ORF clone is ion-exchange column purified and shipped in a 2D barcoded Matrix tube containing 10ug of transfection-ready, dried plasmid DNA (reconstitute with 100 ul of water).

Reconstitution Method:

1. Centrifuge at 5,000xg for 5min.
2. Carefully open the tube and add 100ul of sterile water to dissolve the DNA.
3. Close the tube and incubate for 10 minutes at room temperature.
4. Briefly vortex the tube and then do a quick spin (less than 5000xg) to concentrate the liquid at the bottom.
5. Store the suspended plasmid at -20°C. The DNA is stable for at least one year from date of shipping when stored at -20°C.

RefSeq: [NM_019141.2](#), [NP_062014.2](#)

RefSeq Size: 4021 bp

RefSeq ORF: 2250 bp

Locus ID: 25565

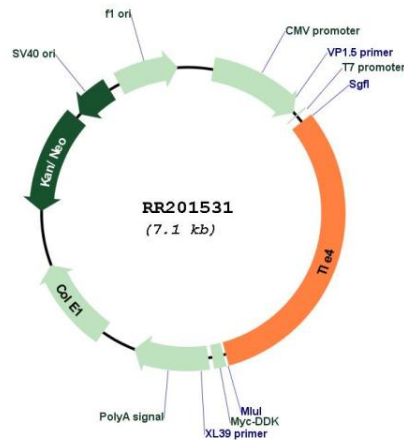
UniProt ID: [Q07141](#)

Cytogenetics: 1q43

MW: 81.2 kDa

Gene Summary: Transcriptional corepressor [RGD, Feb 2006]

Product images:



Circular map for RR201531