

Product datasheet for **RR201527**

Dnd1 (NM_001109379) Rat Tagged ORF Clone

Product data:

Product Type: Expression Plasmids
 Product Name: Dnd1 (NM_001109379) Rat Tagged ORF Clone
 Tag: Myc-DDK
 Symbol: Dnd1
 Mammalian Cell Selection: Neomycin
 Vector: pCMV6-Entry (PS100001)
 E. coli Selection: Kanamycin (25 ug/mL)
 ORF Nucleotide Sequence: >RR201527 representing NM_001109379
 Red=Cloning site Blue=ORF Green=Tags(s)

TTTTGTAATACGACTCACTATAGGGCGGCCGGAATTCGTCGACTGGATCCGGTACCGAGGAGATCTGCC
 GCC**CGATCGCC**

ATGCAGTCCAACGGGAGTGTGAGCAATGGTGTGAGAGGGTGAATCCAGAGAACAAGGCAGCCCTGGAGG
 CGTGGGTAAAGGGAGACTGGCATTTCGCCTGGTGCAGGTCAACGGGCAAAGGAAGTATGGCGGGCCACCCCC
 AGGCTGGTGGGCAGCCCGCCACCGTCAGGGTCCGAGGTATTTATCGGACGACTACCGCAGGATGTGTAC
 GAGCACCAGTTGATCCCACTCTCCAGCGCGTGGGACGCCTCTATGAGTTCGCCCTAATGATGACCTTTA
 GTGGCCTGAACCGCGGCTTTGCCTATGCGCGCTACAGCTCACGGCGCGGTGCCAGGCCCGCCATTTGCTAC
 GCTGCACAACCACAGCTGCGGCCCTTCTTGCCAGCTCCTGGTATGCCGAAGTACCGAGAAGTGCGAGCTG
 ACGGTGGACGGGCTCCCTCTTAGCTTGAACCGACGTGCGTTACTGCTTGCCTGCAACCGCTCGGTCCCT
 GCCTGCAGGAGACATTGCTGCTACCGAGCCCTGGGTCTGCGCCCTCTCAAATTGCACTGCTCAAGTTTAG
 CACTCACCGAGCTGCTGCCATGGCCAAAAGGCTCTGGTAGAAGGGCAGTCACGCCTCTGTGGAGAGCAG
 GTGGCTGTGGAGTGGCTCAAGCCAGACCTGAAGCAGCACTTCGCCAACAGCTTGCGGTCCCTCACTGC
 GGTTCCTAAGGCCAGATGTCAGCCAAGTACCCAGACCAGGGACAAGCTGGGGTCCCAAGGGCTCGGGC
 CGCTCTGCAACAGCTGTGTCAACGGATGAAGCTAGGCTGCCAGTGTTCCTTACCAAGTGTTTAGGAACG
 GGGCTGCGGGCTGGCATCGCTTCTGGTACCAAGTTGTGATCCCTGGGCATCCAGTGCCTTTCAGTGGCC
 TCAATTTGGGTTGTGCTGACCTCTGATTGGCAGGATGGGCATGAGGTGGCCAAGGATGCTGTATCTGCACA
 GCTGCTGGAAACTGAGTGAATCTAGGACCAGCTTATGGTCTCCTAGGGCTGAAGCGGGTCTGTGGTG
 AAGCAG

ACGCGTACGCGGCCGCTCGAGCAGAACTCATCTCAGAAGAGGATCTGGCAGCAAATGATATCCTGGATT
 ACAAGGATGACGACGATAAGGTTTAA



Protein Sequence: >RR201527 representing NM_001109379
 Red=Cloning site Green=Tags(s)

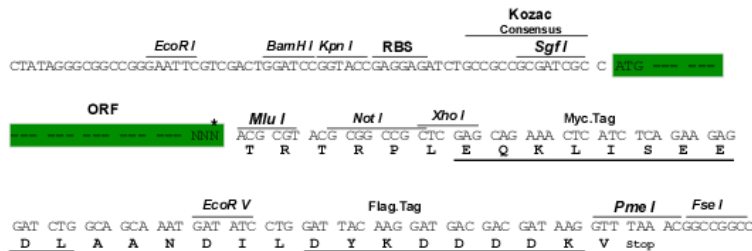
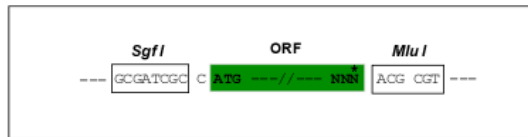
MQSKRECEQWCERVNPENKAALAEAWVRETGIRLVQVNGQRKYGGPPPGWVGSPPPSGSEVFIGRLPQDVY
 EHQLIPLFQRVGRLYEFRLMMTF SGLNRGFAYARYSSRRGAQAAIATLHNHQLRPSQLLVCRSTKCEL
 TVDGLPLSLNRRALLLALQPLGPCLQETLLLPSPGSAPSQIALLKFFSTHRAAAMAKKALVEGQSRLCGEQ
 VAVEWLKPDLKQHFRRQLAGPSLRFLRPDVSQLAQTRDKLGSQGARAALQQLCQRMKLGCPVFLTKCLGT
 GPAGWHRFWYQVVIPGHPVPFSGLIWVVLTSDWQDGHVAKDAVSAQLLETLSERTSLWSPRAEAGSVV
 KQ

TRTRPLEQKLISEEDLAANDILDYKDDDDKV

Restriction Sites: SgfI-MluI

Cloning Scheme:

Cloning sites used for ORF Shutting:



* The last codon before the Stop codon of the ORF

ACCN: NM_001109379

ORF Size: 1056 bp

OTI Disclaimer: The molecular sequence of this clone aligns with the gene accession number as a point of reference only. However, individual transcript sequences of the same gene can differ through naturally occurring variations (e.g. polymorphisms), each with its own valid existence. This clone is substantially in agreement with the reference, but a complete review of all prevailing variants is recommended prior to use. [More info](#)

OTI Annotation: This clone was engineered to express the complete ORF with an expression tag. Expression varies depending on the nature of the gene.

Components: The ORF clone is ion-exchange column purified and shipped in a 2D barcoded Matrix tube containing 10ug of transfection-ready, dried plasmid DNA (reconstitute with 100 ul of water).

Reconstitution Method:

1. Centrifuge at 5,000xg for 5min.
2. Carefully open the tube and add 100ul of sterile water to dissolve the DNA.
3. Close the tube and incubate for 10 minutes at room temperature.
4. Briefly vortex the tube and then do a quick spin (less than 5000xg) to concentrate the liquid at the bottom.
5. Store the suspended plasmid at -20°C. The DNA is stable for at least one year from date of shipping when stored at -20°C.

RefSeq: [NM_001109379.1](#), [NP_001102849.1](#)

RefSeq Size: 1517 bp

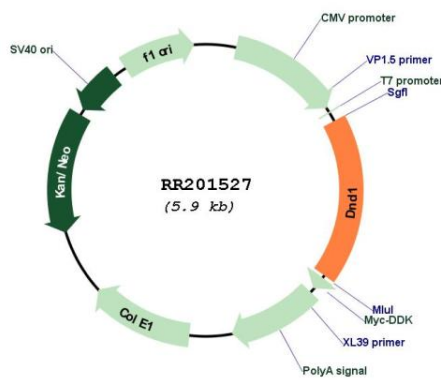
RefSeq ORF: 1059 bp

Locus ID: 679841

Cytogenetics: 18p11

MW: 39.1 kDa

Product images:



Circular map for RR201527