

Product datasheet for RR201522

Col3a1 (NM_032085) Rat Tagged ORF Clone

Product data:

Product Type:	Expression Plasmids
Product Name:	Col3a1 (NM_032085) Rat Tagged ORF Clone
Tag:	Myc-DDK
Symbol:	Col3a1
Synonyms:	MGC93704
Vector:	pCMV6-Entry (PS100001)
E. coli Selection:	Kanamycin (25 ug/mL)
Cell Selection:	Neomycin
ORF Nucleotide Sequence:	>RR201522 representing NM_032085 Red=Cloning site Blue=ORF Green=Tags(s)

TTTTGTAATACGACTCACTATAGGGCGGCCGGAATTCGTCGACTGGATCCGGTACCGAGGAGATCTGCC
GCCGGATCGCC

ATGATGAGCTTTGTGCAATGTGGGACCTGGTTTCTTCTCACCCCTGCTTACCCCTCTCTTATTTGGCAC
AGCAGTCCAATGTAGATGAATTGGGATGCAACTACCTTGGTCAGTCTATGAGTCTAGAGATGTCTGGAA
GCCAGAACCATGTCAAATATGTGTCTGCGACTCGGGATCTGTCTCTGTGATGACATAATGTGTGATGAT
GAGCCACTAGACTGCCCAACCCAGAGATCCCATTGGAGAATGTTGTGCAATATGTCCACAGCCTTCTA
CACCTGCTCCTGTATTCTGATGGTAATAGACCTCAAGGCCCAAGGGAGATCCAGGCCCTCTGGCAT
TCTTGGGAGAAATGGCGACCCTGGTCTTCCAGGACAACCAGGGCTCCCTGGTCTCTGGCTCCCCTGGA
ATCTGTGAATCATGTCCAACCTGGTGGCCAGAATTATTCTCCCAATTCGACTCATATGATGTCAAGTCTG
GAGTCGGAGGAATGGGTGGCTATCCTGGACCAGCTGGTCCACCAGGCCCTCCAGGACCCCTGGTTCCCT
TGGACATCCTGGATCTCCTGGTTCTCCTGGATACCAAGTCTCCTGGTGAACCGGGTCAAGCTGGTCT
GCAGGCCCTCCAGGACCTCCTGGTGTATTGGTCCATCTGGCCCTGCAGGAAAGGATGGAGAGTCAGGAA
GACCCGGACGACCTGGAGAGCTGGACTGCCTGGACCTCCAGGTATCAAAGGCCAGTGGTATCCCTGG
ATTCCCGGTATGAAAGGACACAGAGGCTTTGATGGACGCAATGGAGAGAAGGGTCAAACCGGTGCTCCT
GGATTGAAGGGTAAAACGGTCTTCCGGGAGACAACGGAGCTCCTGGCCCATGGTCCCAGAGGGGCTC
CTGGTGAAGGAGGACGACCAGGTCTTCTGGAGCCGAGGTGCTCGAGGCAATGATGGTGTCTGGGGCAG
TGACGGGCAACCAGTCCCCTGGTCTCCTGGAAGTGCAGGATTCCTGGATCTCCTGGTGTAAAGGT
GAGGTTGGACCTGCAGGATCCCCTGGCTCAAATGGCTCTCCAGGACAAGAGGGGAACTGGACCACAAG
GACACGCTGGTGTCAAGGACCTCCTGGCCCTCCTGGCAATAATGGCAGTCTGGTGGGAAAGGTGAAAT
GGTCCAGCTGGCATTCTGGAGCTCCTGGACTCCTAGGAGCTAGGGTCCCCTGGACCAGCAGGAGCT
AATGGTGCACCGGACAACGAGGTCCTCAGGCGAACCAGGCAAGAAATGGAGCAAAGGGAGACCAGGAG
CTCGCGGTGAACGGGGCAAGCTGGTCCCAGGATTCCAGGACCTAAGGGCGAAGACGGCAAAGATGG
GTCACCAGGAGAACCCTGGTGAATGGAGTCCAGGAAACCCAGGAGAAAGGGGTGCCCTGGCTCCGA
GGACCTGCAGGGCAAATGGCGCCCAGGAGAAAAGGGTCTGCTGGAGAGCGTGGTGGCCAGGTCTCT



[View online >](#)

CAGGACCTAGAGGAGTAGCTGGAGAACCTGGCCGAGATGGAACCCCTGGAGGTCCAGGGATACGGGGTAT
GCCCGAAGTCCAGGTGGACCAGGCAATGATGGGAAACCAGGACCTCTGGAAGTCAAGGAGAAAGTGGT
CGCCCTGGTCCTCTGGCCCATCTGGCCCCAGAGGTGACCTGGTGTGTCATGGGTTTCCCTGGTCCTAAAG
GAAATGATGGTGCACCTGGCAAAAACGGAGAACGGGGTGGCCCTGGGGTCTGGCCTCCAGGTCTGCTG
TGGAAAGAATGGGAGACTGGACCTCAGGTCCCCAGGACCTACTGGCGCACCTGGTGACAAGGGAGAC
GCTGGACCCCTGGTCCACAAGGATTACAAGGCATACCTGGTACCAGTGGTCTCCAGGAGAAAAATGGAA
AACCCAGGAGAACCAGGTCCAAGGGTGAAGCTGGAGCACCTGGAGTTCTGGAGGCAAGGGTGATTCTGG
TGCCCTGGAGAACGTGGACCCCTGGAACCGCAGGAACCCCTGGGCTTAGAGGTGGAGCTGGACCCCT
GGGCTGAGGGAGGAAAGGGCCCTGCTGGTCCCCCTGGTCCCCCTGGTACTTCTGGTCTCTGGTCTGC
AAGGGATGCCAGGAGAGAGAGGAGGTCTGGGAGTCTGGCCAAAGGGTAAAAGGGTGAAGCCAGGCGG
TGCGGGTCTGATGGAGTCCAGGAAAGGATGGGCCGAGAGGTCTGCTGGTCTATTGGTCCCCCTGGC
CCAGCTGGTCCAGCTGGAGATAAGGGTGAAGGTGGTGGCCCTGGACTCCAGGTATAGCTGGACCTCGAG
GTGGCCCTGGTGAGAGAGGTGAACATGGCCCTCCAGGACCTGCTGGTCTCCCGGGTCTCTGGGCAGAA
TGTTGAACCAGGTGCTAAAGGAGAAAGAGGTGCCCCGGAGAGAAAGGTGAAGGAGGCCCTCTGGTGGC
GCAGGACCCCTGGTGGTCTGGACCTGCTGGTCTCTGGGCCCAAGGTGTAAGGGTGAACGGGGCA
GTCTGGCGGTCTGGTCTGCTGGCTTCCCGGTGGCCGTGGTCTTCTGGTCTCCCGCAACAAATGG
TAATCCAGGGCCCCAGGACCCAGTGGTCTCTGGCAAGGATGGCCCTCCAGGTCTGCAGGTAACAGT
GGTTCTCTGAAACCCTGGAGTAGCTGGACAAAAGGTGATGCTGGCAACCAGGAGAGAAGGGGCCAC
CTGGTCTCAGGGTCTCCAGGATCTCCAGGTCCACTTGGAAATTCAGGGCTAACTGGAGCACGAGGTCT
TGCTGGACCACAGGCATGCCAGGTCCACGGGGTAGCCCTGGACCTCAGGGTATCAAGGGTGAAGTGGAA
AAGCCAGGAGCCAGTGGCCATAATGGGGAACGTGGTCTCTGGACCCCAAGGTCTTCTGGTCCAGCTG
GTACAGCTGGTGGAGCCGGAAGGGATGGAACCCTGGATCAGATGGTCCAGCAGGTGAGACGGATCTCC
TGGTGGCAAGGGTGTGCTGGTGAAGTGGTCTCTGGTGGCCAGCGCTCTGGTCTCCAGGACCA
CCTGGTCTGTTGGTCCATCTGGAAAAAATGGTGACAGAGGAGAAACGGGTCTGCTGGTCTTCTGGTG
CTCCAGGTCTGCTGGAGCTCGGGGTGCTCTGGTCCCCAAGGTCCACGAGGTGACAAAGGTGAAACTGG
TGAACGTGGTCTAATGGCATCAAAGGACATCGAGGATCCCTGGCAATCCAGGTCCCCAGGTTCTCCC
GGTCTGCTGGACACCAGGGTGCAGTTGGTAGTCCAGGCCCTGCAGGTCCAGAGGCCAGTTGGTCCAC
ATGGACCTCTGGAAAAGATGGATCAAGTGGACATCCAGGTCCCATTGGACCACCAGGGCTCGAGGTAA
CAGAGGTGAAAGAGGATCTGAGGGCTCGCCGGTCAACCCTGGACAGCCAGGACCCCTGGACCCCTGGT
GCCCTGGTCCCTGCTGGTGGCGGTGCTGCCATTGCTGGAGTTGGAGGTGAAAAGTCTGGCGGCTTTT
CACCATATTACGGGGATGATCCAATGGATTTCAAGATCAACACTGAGGAGATCATGTCTTCACTCAAGT
TGTTAACGGACAATAGAGAGTCTTATCAGCCCTGATGGTCTAGAAAAAACCCCTGCTCGGAATTGCAGA
GACCTGAAATTCTGCCACCCTGAACTCAAGAGCGGAGAATACTGGGTTGATCCTAACCAAGGCTGCAAGA
TGGATGCTATAAAAGTGTCTGTAATATGGAAACCGGAGAAACATGCATAAATGCCAGTCCCATGACTGT
CCCAGGAAAGCACTGGTGGACAGATGCTGGTGTGAGAAGAAACATGTTTGGTTTGGAGAATCTATGAAT
GGTGGCTTTCAGTTCAGCTATGGCAATCCTGATCTTCTGAAGATGTCTTATGATACAGCTGGCCTTCC
TCAGACTTCTTCCAGCCGGGCTCCAGAACATTACATACCCTGCAAAAACAGCATTGGCTACATGGA
TCAGGCCAATGGCAATGTAAGAAGTCTCTGAAGCTGATGGGATCCAATGAGGGAGAATCAAGGCTGAA
GGAATAGCAAAATTCACCTACACAGTTCTAGAGGATGGCTCAACACACTGGTGAATGGAGCAAGA
CAGTCTTTGAATATCAAACACGCAAGGCCATGAGACTCCCATCATAGATATCGACCCTATGACATTGG
TGGTCTGATCAAGAATTTGGTGTGGACATTGGCCCTGTTTGTCTTTTA

ACGCGTACGCGGCCGCTCGAGCAGAACTCATCTCAGAAGAGGATCTGGCAGCAATGATATCTGGATT
ACAAGGATGACGACGATAAGGTTTAA

Protein Sequence: >RR201522 representing NM_032085
 Red=Cloning site Green=Tags(s)

MMSFVQCGTWFLLTLLHPSLILAQQSNVDELGCNYLGQSYESRDVWVWPEPCQICVCDSSGSLVLCDDIMCDD
 EPLDCPNPEIPFGECCAICPQPSTPAPVIPDGNRPQPKGDPPGPIGRNGDPLPGQPLGPPGSPG
 ICESCPTGGQNYSPQFDSYDVKSGVGGMGYPGAGPPGPPGSSGHPGSPGSGYQGGPPGEGQAGP
 AGPPGPPGAIGPSGPAKDGESGRPRGRGERGLPGPPGIKGPAGIPGFPGMKGHRGFDGRNGEKGETGAP
 GLKGENGLPGDNGAPGPMGPRGAPGERGRPLPGAAGARGNDGARGSDGQPPGPPGTAGFPSPGAKG
 EVGPAGSPGNSGSPQRGEPGPQGHAGAQQPPGPNNGSPGGKGEMGPAGIPGAPGLLGARGPPGAGA
 NGAPGQRGSPGEPGKNGAKGEPGARGERGEAGSPGIPGPKGEDGKDGSPGEPGANGVPGNPGERAPGFR
 GPAGPNGAPGEKGPAGERGGPGAPRGVAGEPRDGTGGPIRGMPSGPPGNDGKPPGSGQGESG
 RPPGPPSGPRGQPGVMGFPGKNDGAPKNGERGGPGGLPGPAGKNGETGPQGGPPTGAPGDKGD
 AGPPGQGLQGIPTSGPPGKNGEPGPKGEAGAPVPGKGDGSPGERGPPGTAGTGLRGGAGPP
 GPEGGKGPAGPPGPTSGPPGLQMPGERGGSPGPKGEKGEPEGAGADGVPKGDGRGAPGIPGPPG
 PAGQPGDKGEGGAPGLPGIAGPRGGPGERGEHGGPPGAPFPAGQNGEPGAKGERGAPGEKGGPPGA
 AGPPGGSPAGPPGQVKGERGSPGGGAAGFPGGRGLPGPPNNGNPPGPPGSPAGPKDPPGAGNS
 GSPGNPVGAPKGDAGQPEKGGPPGAQPPGSPGLGIAGLTGARGLAGPPMPGPRGSPGQGIKGESG
 KPGASGHNGERGGPPQGLPGQGTAGEPRDGNPGSDGQPPGRDGSPPGKDRGENGSPGAPGPHGPP
 PGPVPGSKNGDRGETGPAGPSGAPGAPARGAPGQPRGDKGETGERGSNGIKGHRGFPNPGPPGSP
 GAAGHQGAVGSPGAPRGPVPHGPPGKDGSSGHPGPIGPPGPRGNRGERGSESGHPGQPPGPPGPPG
 APGPCCGGAAIAGVGGKSGGFSPYYGDDPMDFKINTEEIMSSLKSVNGQIESLISPDGSRKNPARNCR
 DLKFCHEPKSGEYWVDPNQCKMDAIVFCNMETGETCINASPMTPVRKHWWTDAGAEKHHVWFESMN
 GGFQFSYGNPDLPEDVLDVQLAFLRLLSSRASQNIYHCKNSIAYMDQANGNVKSLKLMGSNEGFEKAE
 GNSKFTYTVLEDGCTKHTGEWSKTVFEYQTRKAMRLPIIDIAPYDIGGPDQEFVGDIGPVCFL

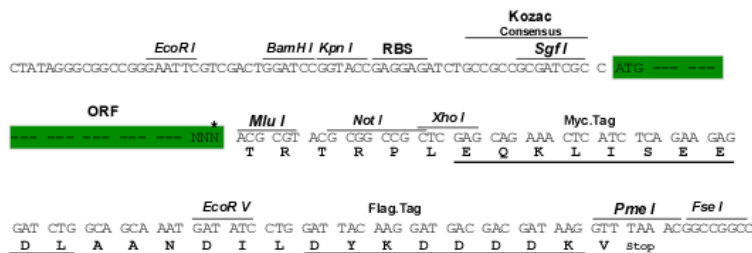
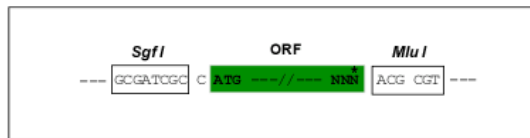
TRTRPLEQKLISEEDLAANDILDYKDDDDKV

Restriction Sites:

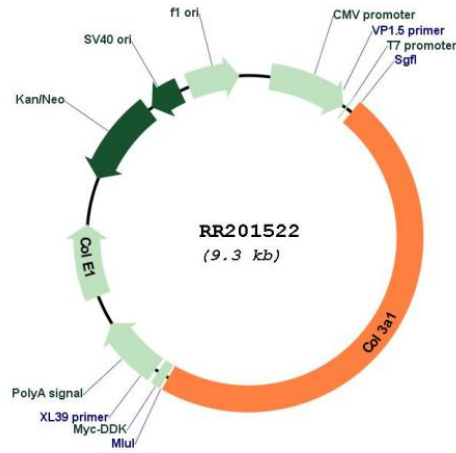
Sgfl-MluI

Cloning Scheme:

Cloning sites used for ORF Shuttling:



* The last codon before the Stop codon of the ORF

Plasmid Map:


ACCN: NM_032085

ORF Size: 4389 bp

OTI Disclaimer: The molecular sequence of this clone aligns with the gene accession number as a point of reference only. However, individual transcript sequences of the same gene can differ through naturally occurring variations (e.g. polymorphisms), each with its own valid existence. This clone is substantially in agreement with the reference, but a complete review of all prevailing variants is recommended prior to use. [More info](#)

OTI Annotation: This clone was engineered to express the complete ORF with an expression tag. Expression varies depending on the nature of the gene.

Components: The ORF clone is ion-exchange column purified and shipped in a 2D barcoded Matrix tube containing 10ug of transfection-ready, dried plasmid DNA (reconstitute with 100 ul of water).

Reconstitution Method:

1. Centrifuge at 5,000xg for 5min.
2. Carefully open the tube and add 100ul of sterile water to dissolve the DNA.
3. Close the tube and incubate for 10 minutes at room temperature.
4. Briefly vortex the tube and then do a quick spin (less than 5000xg) to concentrate the liquid at the bottom.
5. Store the suspended plasmid at -20°C. The DNA is stable for at least one year from date of shipping when stored at -20°C.

RefSeq: [NM_032085.1](#), [NP_114474.1](#)

RefSeq Size: 4792 bp

RefSeq ORF: 4392 bp

Locus ID: 84032

UniProt ID: [P13941](#)

Cytogenetics: 9q22

MW: 138.9 kDa

Gene Summary: may be involved in craniofacial development [RGD, Feb 2006]