

Product datasheet for **RR201473**

Acta1 (NM_019212) Rat Tagged ORF Clone

Product data:

Product Type:	Expression Plasmids
Product Name:	Acta1 (NM_019212) Rat Tagged ORF Clone
Tag:	Myc-DDK
Symbol:	Acta1
Vector:	pCMV6-Entry (PS100001)
E. coli Selection:	Kanamycin (25 ug/mL)
Cell Selection:	Neomycin
ORF Nucleotide Sequence:	>RR201473 representing NM_019212 Red=Cloning site Blue=ORF Green=Tags(s)

TTTTGTAATACGACTCACTATAGGGCGGCCGGAATTCGTCGACTGGATCCGGTACCGAGGAGATCTGCC
GCC**GCGATCGCC**

ATGTGTGACGAGGACGAGACCACCGCTCTGTGTGTGACAACGGCTCTGGCTGGTGAAGCTGGCTTTG
CCGGGGATGATGCCCCAGGGCTGTGTTCCCATCCATCGTGGGTCGGCCCCGTACCAGGGTGTCATGGT
CGGTATGGGTGAGAAGGATTCTACGTGGCGACGAGGCCAGCAAGCGAGGTATCCTGACCCTGAAG
TACCCCATTTGAACACGGCATTATACCAACTGGGACGACATGGAGAAGATCTGGCACCACACCTTCTACA
ATGAGCTGCGTGTGGCCCCGAGGAGCACCCGACCCTGCTCACTGAGGCCCTTTGAACCCAAAGCTAA
CCGGGAGAAGATGACTCAAATCATGTTTGGACCTTCAACGTGCCTGCTATGTATGTGGCTATTCAGGCG
GTGCTGTCTCTATGCCTCCGGCCGTACCACCGCATCGTGTGGATTCTGGGACGGTGTCAACCCACA
ACGTGCCCATCTATGAGGGTTATGCCCTGCCACACGCCATCATGCGTCTGGACCTGGCTGGTCCGACCT
TACTGACTACCTGATGAAAATCCTCACCAGCGTGGCTATTCCTTCGTGACCACAGCTGAACGTGAGATT
GTGCGCGACATCAAAGAGAAGCTGTGCTACGTGGCCCTGGACTTCGAGAATGAGATGGCCACCGCTGCCT
CTTCTCTCCCTGGAAAAGAGCTATGAGCTGCCTGACGGGCAGGTCATCACCATCGGCAATGAGCGCTT
CGGTTGCCCGGAGACGCTCTCCAGCCTCCTTTATCGGTATGGAGTCTGCGGGGATCCATGAGACCACC
TACAACAGCATCATGAAGTGCACATCGACATCAGGAAGGACCTGTACGCCAACAAACGTCATGTCAGGGG
GCACTACCATGTACCCCGGTATCGCTGACCGCATGCAGAAGGAGATCACAGCTCTGGCTCCCAGCACCAT
GAAGATCAAGATCATCGCCCCCTGAGCGCAAGTACTCAGTGTGGATCGGCGGCTCCATCCTGGCTCG
CTGTCCACCTCCAGCAGATGTGGATCACCAAGCAGGAGTACGACGAGGCCGCCCCCTCCATTGTGCACC
GCAATGCTTC

ACGCGTACGCGGCCGCTCGAGCAGAACTCATCTCAGAAGAGGATCTGGCAGCAAATGATATCCTGGATT
ACAAGGATGACGACGATAAGGTTTAA



[View online »](#)

Protein Sequence: >RR201473 representing NM_019212
 Red=Cloning site Green=Tags(s)

MCDEDETTALVCDNGSGLVKAGFAGDDAPRAVFPISVGRPRHQVVMGMGQKDSYVGDEAQSQRGILTLK
 YPIEHGIITNWDDMEKIWHHTFYNELRVAPEEHPTLLTEAPLNPKANREKMTQIMFETFNVPAMYVAIQ
 VLSLYASGRTTGIVLDSGDGVTHNVPIYEGYALPHAIMRLDLAGRDLTDYLMKILTERGYSFVTTAEREI
 VRDIKEKLCYVALDFENEMATAASSSSLEKSYELPDGQVITIGNERFRCPETLFQPSFIGMESAGIHETT
 YNSIMKCDIDIRKDLYANNVMSGTTMYPGIADRMQKEITALAPSTMKIKIIAPPERKYSVWIGGSILAS
 LSTFQQMWITKQEYDEAGPSIVHRKCF

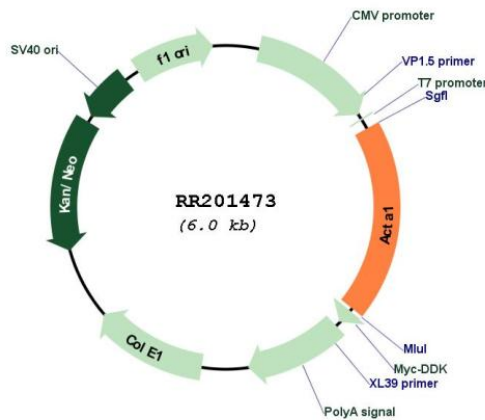
TRTRPLEQKLISEEDLAANDILDYKDDDDKV

Restriction Sites: SgfI-MluI

Cloning Scheme:



Plasmid Map:



ACCN: NM_019212

ORF Size:	1131 bp
OTI Disclaimer:	The molecular sequence of this clone aligns with the gene accession number as a point of reference only. However, individual transcript sequences of the same gene can differ through naturally occurring variations (e.g. polymorphisms), each with its own valid existence. This clone is substantially in agreement with the reference, but a complete review of all prevailing variants is recommended prior to use. More info
OTI Annotation:	This clone was engineered to express the complete ORF with an expression tag. Expression varies depending on the nature of the gene.
Components:	The ORF clone is ion-exchange column purified and shipped in a 2D barcoded Matrix tube containing 10ug of transfection-ready, dried plasmid DNA (reconstitute with 100 ul of water).
Reconstitution Method:	<ol style="list-style-type: none">1. Centrifuge at 5,000xg for 5min.2. Carefully open the tube and add 100ul of sterile water to dissolve the DNA.3. Close the tube and incubate for 10 minutes at room temperature.4. Briefly vortex the tube and then do a quick spin (less than 5000xg) to concentrate the liquid at the bottom.5. Store the suspended plasmid at -20°C. The DNA is stable for at least one year from date of shipping when stored at -20°C.
RefSeq:	NM_019212.2 , NP_062085.1
RefSeq Size:	1518 bp
RefSeq ORF:	1134 bp
Locus ID:	29437
UniProt ID:	P68136
Cytogenetics:	19q12
MW:	42.1 kDa
Gene Summary:	may act as a structural component of the cytoskeleton; may play a role in muscle function [RGD, Feb 2006]