

## Product datasheet for **RR201448**

### **Kcnn2 (NM\_019314) Rat Tagged ORF Clone**

#### **Product data:**

Product Type:	Expression Plasmids
Product Name:	Kcnn2 (NM_019314) Rat Tagged ORF Clone
Tag:	Myc-DDK
Symbol:	Kcnn2
Synonyms:	KCa2.2; SK2; SKCa 2; SKCa2
Vector:	pCMV6-Entry (PS100001)
E. coli Selection:	Kanamycin (25 ug/mL)
Cell Selection:	Neomycin



[View online »](#)

**ORF Nucleotide Sequence:**

>RR201448 representing NM\_019314  
 Red=Cloning site Blue=ORF Green=Tags(s)

TTTTGTAATACGACTCACTATAGGGCGGCCGGGAATTCGTCGACTGGATCCGGTACCGAGGAGATCTGCC  
 GCC**CGGATCGCC**

ATGAGCAGCTGCAGGTACAACGGGGCGTCATGCGTCCGCTCAGCAACTTGAGCTCGTCCCGCCGGAACC  
 TGCACGAGATGGACTCAGAGGCTCAGCCCTGCAGCCCCAGCGTCGGTTGTAGGAGGAGGTGGTGGTGC  
 GTCCTCCCGTCTGCTGCCGCCGCCCTCATCCTCAGCCCCAGAGATCGTGGTGTCTAAGCCGGAGCAC  
 AACAACTTAACAACCTGGCGCTCTACGGAAGTGGCGCGGAGGCAGCACCGGAGGCGCGCGCGCGCG  
 GCGGGCGCGCGCGGCAGCGGCATGGCAGCAGCAGCGGCACTAAGTCCAGCAAAAAGAAGAACAGAA  
 CATCGGCTATAAGCTGGGCCATCGCGTGCCTGTTTGAAGCGCAAGCGGCTCAGCGACTATGCGCTC  
 ATCTTCGGCATGTTCCGCATCGTGGTATGGTATCGAGACCGAGCTGTCGTGGGCGCCTACGACAAGG  
 CGTCGCTGTATCTTTAGCTCTGAAATGCCTTATCAGTCTCTCCAGCATATCCTGCTTGGTCTGATCAT  
 CGTATACCACGCCAGGAAATACAGTTATTCATGGTGGACAATGGAGCAGATGACTGGAGATAGCCATG  
 ACTTATGAACGTATTTCTTCTCATCTGCTTGGAAATACTGGTGTGTCTATTCATCCCATCCCTGGGAAT  
 ATACGTTACATGGACAGCCCGCTTGCCCTTCTCTATGCCCTTCCACAACCACTGCAGACGTGGATAT  
 TATTTTATCTATACCAATGTTCTTAAGACTCTATCTGATTGCCAGAGTCATGCTATTACATAGCAAACCT  
 TTCACCGATGCCTCCTCTAGAAGCATTGGGGCACTTAATAAGATAAACTTCAATACCGGTTTTGTATGA  
 AGACTTAAATGACTATCTGCCAGGAAGTGTGCTCTTGGTTTTAGTATCTCGTTATGGATAATTGCCGC  
 ATGGACTGTCCGAGCTTGTGAAAGGTACCATGATCAACAGGATGCTACTAGCAACTTCTTGGAGCAATG  
 TGGTTGATATCAATAACTTTCTCTCCATTGGTTATGGTGACATGGTACCTAACACATACTGTGGGAAAG  
 GAGTCTGCTTGCCTACCGGAATAATGGGTGCAGGTTGCACAGCCTTGGTGGTAGCCGTAGTGGCAAGGAA  
 GCTAGAACTTACCAAAGCAGAAAAGCATGTGCACAATTCATGATGGATACTCAGCTGACCAAAAAGAGTA  
 AAAAAACGAGCCCAATGTACTCAGGGAAACGTGGTTAATCTACAAAAACAAAAGCTAGTGA AAAAGA  
 TCGACCATGCAAAAAGTAAAGGAAGCATCAACGAAATCTTACAAGCTATTCATCAATTAAGAAGTGTGAA  
 GATGGAACAGAGGAAACTGAATGACCAAGCGAATACGCTAGTGGATCTGGCAAAGACCCAGAATATCATG  
 TATGATATGATTTCCGACTTAAATGAAAGGAGTGAAGACTTTGAGAAAAGGATCGTCACCCTGGAACAA  
 AATTAGAACTTTGATTGGTAGCATTATGCCCTCCCTGGGCTTATCAGCCAGACCATCAGACAGCAGCA  
 AAGGGACTTCATAGACACAGATGGAGAACTATGACAAGCATGTCACCTACAATGCTGAGCGTTCCTGG  
 TCCTCGTCCAGGAGCGCGGTCTCTCCACAGCGCCACCAACTTCATCTGAGAGTAGCTCCTCGTCCA  
 GGAGGGCGCGGTCTCTCCACAGCGCCACCAACTTCATCTGAGAGTAGC

AG**CGGACCG**ACGCGTACGCGCCGCTCGAGCAGAACTCATCTCAGAAGAGGATCTGGCAGCAAATGATATCC  
 TGGATTACAAGGATGACGACGATAAGGTTTAA

**Protein Sequence:**

>RR201448 representing NM\_019314  
 Red=Cloning site Green=Tags(s)

MSSCRYNGGVMRPLSNLSSRRNLHEMDSEAQPLQPPASVVGGGGASSPSAAAAASSSAPEIIVSKPEH  
 NNSNNLALYGTGGGGSTGGGGGGGGGGSGHSSSGTKSSKKNQNIQYKLGHRRALFEKRRLSDYAL  
 IFGMFIVVMVIETEL SWGAYDKASLYSLALKLISLSTIILLGLIIVYHAREIQLFMVDNGADDWRIAM  
 TYERIFFICLEILVCAIHPGNYTFTWTARLAFSYAPSTTTADVDIILSIPMFLRLYL IARVMLLHSL  
 FTDASSRSIGALNKINFNTRFVMKTLMTICPGTVLLVFSISLWIIAAWTVRACERYHDQQDVTSNFLGAM  
 WLISITFLSIGYDMVPNTYCGKGVCLLTGIMGAGCTALVVAVVARKLELTKAEKHVHNFMMDTQLTKRV  
 KNAAANVLRWLIYKNTKLVKIDHAKVRKHQRKFLQAIHQLRVSKMEQRKLNQANTLVDLAKTQNMIM  
 YDMISDLNERSEDFEKRIVTLETKLETIGSIHALPGLISQTI RQQQRDFIETQMENYDKHVTYNAERSR  
 SSSRRRRSSSTAPPTSSESSSSRRRRSSSTAPPTSSESS

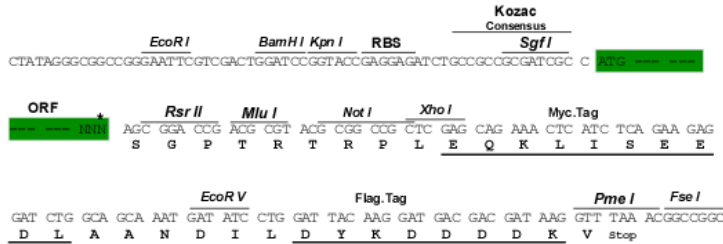
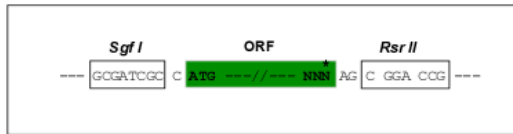
**SGP**TRTRPLEQKLI SEEDLAANDILDYKDDDDKV

**Restriction Sites:**

Sgfl-RsrII

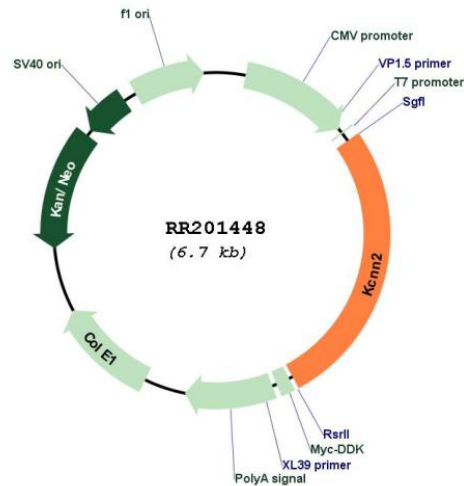
Cloning Scheme:

Cloning sites used for ORF Shuttling:



\* The last codon before the Stop codon of the ORF

Plasmid Map:



ACCN: NM\_019314

ORF Size: 1740 bp

<b>OTI Disclaimer:</b>	The molecular sequence of this clone aligns with the gene accession number as a point of reference only. However, individual transcript sequences of the same gene can differ through naturally occurring variations (e.g. polymorphisms), each with its own valid existence. This clone is substantially in agreement with the reference, but a complete review of all prevailing variants is recommended prior to use. <a href="#">More info</a>
<b>OTI Annotation:</b>	This clone was engineered to express the complete ORF with an expression tag. Expression varies depending on the nature of the gene.
<b>Components:</b>	The ORF clone is ion-exchange column purified and shipped in a 2D barcoded Matrix tube containing 10ug of transfection-ready, dried plasmid DNA (reconstitute with 100 ul of water).
<b>Reconstitution Method:</b>	<ol style="list-style-type: none"><li>1. Centrifuge at 5,000xg for 5min.</li><li>2. Carefully open the tube and add 100ul of sterile water to dissolve the DNA.</li><li>3. Close the tube and incubate for 10 minutes at room temperature.</li><li>4. Briefly vortex the tube and then do a quick spin (less than 5000xg) to concentrate the liquid at the bottom.</li><li>5. Store the suspended plasmid at -20°C. The DNA is stable for at least one year from date of shipping when stored at -20°C.</li></ol>
<b>RefSeq Size:</b>	2060 bp
<b>RefSeq ORF:</b>	1743 bp
<b>Locus ID:</b>	54262
<b>UniProt ID:</b>	<a href="#">P70604</a>
<b>Cytogenetics:</b>	18q11
<b>MW:</b>	63.8 kDa
<b>Gene Summary:</b>	small-conductance, calcium-activated potassium channel [RGD, Feb 2006]