

## Product datasheet for **RR201446**

### Mapre1 (NM\_138509) Rat Tagged ORF Clone

#### Product data:

Product Type: Expression Plasmids  
Product Name: Mapre1 (NM\_138509) Rat Tagged ORF Clone  
Tag: Myc-DDK  
Symbol: Mapre1  
Synonyms: Eb1  
Vector: pCMV6-Entry (PS100001)  
E. coli Selection: Kanamycin (25 ug/mL)  
Cell Selection: Neomycin  
ORF Nucleotide Sequence: >RR201446 representing NM\_138509  
Red=Cloning site Blue=ORF Green=Tags(s)

TTTTGTAATACGACTCACTATAGGGCGCCGGAATTCGTCGACTGGATCCGGTACCGAGGAGATCTGCC  
GCC**GCGATCGCC**

ATGGCAGTGAATGTGTACTCGACGTCAGTCACCAGTGATAACCTCAGTCGACATGACATGCTGGCTTGA  
TCAATGAATCTCTGCAGTTGAATCTGACAAAGATAGAACAGCTATGTTCCAGGGGCTGCATACTGTCAGTT  
CATGGACATGCTCTTCCCGGCTCCATTGCCTTGAAGAAAGTAAATTCAGGCTAAGCTAGAACATGAA  
TATATCCAGAACTCAAATACTACAAGCCGGCTCAAGAGGATGGGCGTTGACAAAATAATTCCTGTGG  
ATAAATTAGTAAAAGGAAAATTTCAAGCAATTTTGAATTCGTTCAATGTTCAAGAAGTTTTTGTATGC  
AAATTATGATGAAAAGAATATGATCCTGTGCTGCCAGACAAGGTCAAGAAACGGCAGTGGCTCCTTCT  
CTTGTCGCTCCAGCTTTGAGTAAACCGAAGAACTCTCGGCTCCGGTAGTGCAGCCCCACAGAGACCCA  
TTGCAACACAGAGGACTACTGCAGCTCCTAAGGCTGGCCCCGGGATGGTGCAGAAAGAAATCCTGGCATGG  
CAATGGAGATGACGAAGCTGCTGAATTGATGCAGCAGGTCAAAGTATTGAAGCTTACTGTTGAAGACTTG  
GAGAAGGAGAGAGATTTCTACTTCGGCAAGCTAAGGAACATTGAATTGATTTGCCAGGAGAATGAGGGGG  
AAAATGACCCTGTACTGCAGAGGATTGTAGATATTCTTTATGCCACAGATGAAGGCTTTGTGATACCTGA  
CGAGGGGGGCCACAGGAGGAACAAGAAGATATCGAGGGGGGCCACAGGAGGAACAAGAAGAGTAT

**ACGCGT**ACGCGGCCGCTCGAGCAGAAACTCATCTCAGAAGAGGATCTGGCAGCAAATGATATCCTGGATT  
ACAAGGATGACGACGATAAGGTTTAA



[View online »](#)

**Protein Sequence:** >RR201446 representing NM\_138509  
Red=Cloning site Green=Tags(s)

MAVNVYSTSVTSDNLSRHDMLAWINESLQLNLTKIEQLCSGAAYCQFMDMLFPGSIALKKVKFQAKLEHE  
 YIQNFKILQAGFKRMGVDKIIPVDKLVKGFQDNFEFVQWFKKFFDANYDGKEYDPVAARQGOETAVAPS  
 LVAPALSKPKKPLGSGSAAPQRPIATQRTTAAPKAGPGMVRKNP GMNGDDEAAELMQQVKVLKLTVEDL  
 EKERDFYFGKLRNIELICQENEGENDPVLQRIVDILYATDEGFVIPDEGGPQEEQEYRGGPTGGTRRV

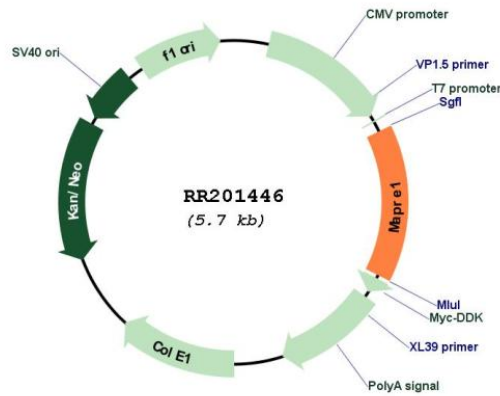
TRTRPLEQKLISEEDLAANDILDYKDDDDKV

**Restriction Sites:** SgfI-MluI

**Cloning Scheme:**



**Plasmid Map:**



**ACCN:** NM\_138509  
**ORF Size:** 804 bp

<b>OTI Disclaimer:</b>	The molecular sequence of this clone aligns with the gene accession number as a point of reference only. However, individual transcript sequences of the same gene can differ through naturally occurring variations (e.g. polymorphisms), each with its own valid existence. This clone is substantially in agreement with the reference, but a complete review of all prevailing variants is recommended prior to use. <a href="#">More info</a>
<b>OTI Annotation:</b>	This clone was engineered to express the complete ORF with an expression tag. Expression varies depending on the nature of the gene.
<b>Components:</b>	The ORF clone is ion-exchange column purified and shipped in a 2D barcoded Matrix tube containing 10ug of transfection-ready, dried plasmid DNA (reconstitute with 100 ul of water).
<b>Reconstitution Method:</b>	<ol style="list-style-type: none"><li>1. Centrifuge at 5,000xg for 5min.</li><li>2. Carefully open the tube and add 100ul of sterile water to dissolve the DNA.</li><li>3. Close the tube and incubate for 10 minutes at room temperature.</li><li>4. Briefly vortex the tube and then do a quick spin (less than 5000xg) to concentrate the liquid at the bottom.</li><li>5. Store the suspended plasmid at -20°C. The DNA is stable for at least one year from date of shipping when stored at -20°C.</li></ol>
<b>RefSeq Size:</b>	2310 bp
<b>RefSeq ORF:</b>	807 bp
<b>Locus ID:</b>	114764
<b>UniProt ID:</b>	<a href="#">Q66HR2</a>
<b>Cytogenetics:</b>	3q41
<b>MW:</b>	30 kDa
<b>Gene Summary:</b>	expressed specifically at growing microtubule distal tips [RGD, Feb 2006]