

Product datasheet for RR201420

Ankrd1 (NM_013220) Rat Tagged ORF Clone

Product data:

Product Type:	Expression Plasmids
Product Name:	Ankrd1 (NM_013220) Rat Tagged ORF Clone
Tag:	Myc-DDK
Symbol:	Ankrd1
Synonyms:	Alrp; Carp; Crap; MARP
Mammalian Cell Selection:	Neomycin
Vector:	pCMV6-Entry (PS100001)
E. coli Selection:	Kanamycin (25 ug/mL)
ORF Nucleotide Sequence:	>RR201420 representing NM_013220 Red=Cloning site Blue=ORF Green=Tags(s)

TTTTGTAATACGACTCACTATAGGGCGGCCGGAATTCGTCGACTGGATCCGGTACCGAGGAGATCTGCC
GCC**CGATCGCC**

ATGATGGTTTTTCGAGTAGAGGAGCTGGTAACGGGCAAAAAGAACAGCAATGGGTCCTCAGGGGAGTTCC
TTCCTGGCGAGTTCAGAAATGGAGAGTATGAAGCTGCTGTTGCCTGGAGAAACAAGAGGACTTGAAGAC
ACTTCCAGCCAACAGTGTGAACCTGGGGGAAGAACAACGGAAAAGTGAGAAAGTTCGAGAGGCAGAGCTC
AAAAAGAAAAAACTAGAACAAAGATCAAAGCTTAAAACTTAGAAGACCTTGAAATAATTGTTCAACTGA
AGAAAAGAAAAAATACAAGAAAATAAGTTCCAGTTGTGAAGGAACCGGAGCCTGAAATTATTACTGA
ACCTGTGGATGTGCCAAGGTTTCTGAAAGCTGCACTGGAGAACAACCTGCCAGTTGTAGAGAAATTCCTG
TCAGACAAGAACAGCCCCGACGCTGCGATGAGTATAAACGGACCGCTCTCCATAGAGCATGCTTAGAAG
GACACTTGGCGATCGTGGAGAAGTTAATGGAGGCTGGAGCCCAGATTGAATTCGAGATATGCTGGAATC
CACAGCCATCCACTGGGCATGTCGTGGAGGAAACCTGGATGTCCTGAAACTGTTGCTAAACAAAGGTGCC
AAAATCAGTGCCCGAGACAAGCTGCTCAGCACAGCGCTGCACGTGGCGGTGAGGACCGGTCACTACGAGT
GTGCTGAGCACCTCATCGCTGCGAGGCCGATCTCAATGCCAAGGACAGAGAAGGAGACACCCCTGCA
TGATGCGGTGAGGTTGAATCGCTACAAGATGATCCGGCTTTGATGACCTTCGGTGGGACCTCAATGTC
AAGAACTGTGCTGGGAAGATCCCTATGGATCTGGTGTGCACTGGCAGAATGGAACCAAGCGGATATTCG
ACAGCCTCAAGGAGAATGCCTACAAAACTCGCGCATAGCTACGTTACAGCCTCAAGGAGAATGCCTAC
AAAAACTCGCGCATAGCTACGTTT

ACGCGTACGCGGCCGCTCGAGCAGAACTCATCTCAGAAGAGGATCTGGCAGCAATGATATCCTGGATT
ACAAGGATGACGACGATAAGGTTTAA



[View online »](#)

Protein Sequence: >RR201420 representing NM_013220
Red=Cloning site Green=Tags(s)

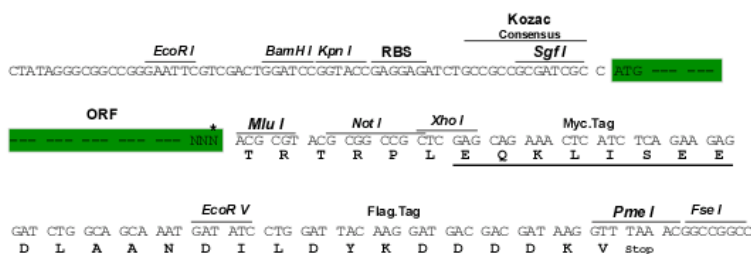
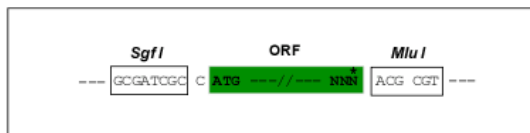
MMVFRVEELVTGKKNSNGSSGEFLPGEFRNGEYEAVALEKQEDLKLTPANSVNLGEEQRKSEKVREAEI
 KKKKLEQRSKLENLEDLEIIVQLKKRKKYKKTVPVVEPEPEIITEPVDVPRFLKAALENKLPVVEKFL
 SDKNSPDVCDEYKRTALHRACLEGLHAIVEKLEMEAGAQIEFRDMLESTAIHWACRGNLDVLLKLLNKGA
 KISARDKLLSTALHVAVRTGHYECAEHLIACEADLNAKDREGDTPLDHAVRLNRYKMIRLLMTFGADLNV
 KNCAGKIPMDLVLHWQNGTKAIFDSLKENAYKNSRIATFTASRRMPTKTRA*LR

TRTRPLEQKLISEEDLAANDILDYKDDDDKV

Restriction Sites: SgfI-MluI

Cloning Scheme:

Cloning sites used for ORF Shuttling:



* The last codon before the Stop codon of the ORF

ACCN: NM_013220

ORF Size: 957 bp

OTI Disclaimer: The molecular sequence of this clone aligns with the gene accession number as a point of reference only. However, individual transcript sequences of the same gene can differ through naturally occurring variations (e.g. polymorphisms), each with its own valid existence. This clone is substantially in agreement with the reference, but a complete review of all prevailing variants is recommended prior to use. [More info](#)

OTI Annotation: This clone was engineered to express the complete ORF with an expression tag. Expression varies depending on the nature of the gene.

Components: The ORF clone is ion-exchange column purified and shipped in a 2D barcoded Matrix tube containing 10ug of transfection-ready, dried plasmid DNA (reconstitute with 100 ul of water).

Reconstitution Method:

1. Centrifuge at 5,000xg for 5min.
2. Carefully open the tube and add 100ul of sterile water to dissolve the DNA.
3. Close the tube and incubate for 10 minutes at room temperature.
4. Briefly vortex the tube and then do a quick spin (less than 5000xg) to concentrate the liquid at the bottom.
5. Store the suspended plasmid at -20°C. The DNA is stable for at least one year from date of shipping when stored at -20°C.

RefSeq Size: 1749 bp

RefSeq ORF: 960 bp

Locus ID: 27064

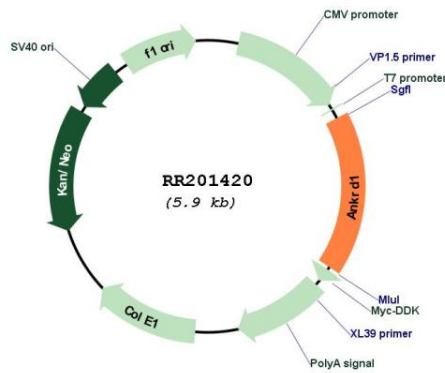
UniProt ID: [Q8R560](#)

Cytogenetics: 1q53

MW: 36.1 kDa

Gene Summary: acts as a negative regulator of cardiac-specific gene expression [RGD, Feb 2006]

Product images:



Circular map for RR201420