

Product datasheet for RR201398

Map4k4 (NM_001106904) Rat Tagged ORF Clone

Product data:

Product Type: Expression Plasmids
 Product Name: Map4k4 (NM_001106904) Rat Tagged ORF Clone
 Tag: Myc-DDK
 Symbol: Map4k4
 Vector: pCMV6-Entry (PS100001)
 E. coli Selection: Kanamycin (25 ug/mL)
 Cell Selection: Neomycin
 ORF Nucleotide Sequence: >RR201398 representing NM_001106904
 Red=Cloning site Blue=ORF Green=Tags(s)

TTTTGTAATACGACTCACTATAGGGCGGCCGGGAATTCGTCGACTGGATCCGGTACCGAGGAGATCTGCC
 GCCGGATCGCC

ATGGATGTACCAGGATGAAGAGGAAGAAATCAAACCTGGAGATAAATATGCTGAAGAAATATTCTCATC
 ATAGAAATATTGCAACATACTATGGTGCTTTCATTAAGAAGAGCCCTCCAGGACACGATGACCAGCTCTG
 GCTCGTTATGGAGTTTTGCGGGGCTGGTCCATCAGAGCCTTGTGAAGAACACCAAGGGAACACGCTC
 AAAGAAGACTGGATTGCTTACATCTCCCGGAAATCCTCAGGGGTTGGCCATCTCCACATTCACCATG
 TCATTCACCGAGACATCAAGGGCAGAAGCTGCTGCTGACTGAGAACGCGGAGGTGAAACTTGTGATTT
 TGGTGTAAAGCGCTCAGCTGGACAGGACGGTTGGACGGAGAAATACATTATAGGCACACCATACTGGATG
 GCTCCGGAGGTCATCGCCTGCGACGAGAATCCAGATGCCACTTACGACTACAGAAGTGACCTCTGGTCTT
 GTGGCATCAGGCCATCGAGATGGCAGAAGGAGCCCCCTCTCTGTGACATGCATCCAATGAGAGCGCT
 GTTTCATCCCCAGAAACCTCCTCCAGGCTGAAGTCAAAAAATGGTCAAAGAAATTTTTCAGCTTC
 ATAGAAGGCTGCCTGGTGAAGAATTACATGCAGCGCCCTCTACAGAGCAGCTTTTAAACACCCTTTCA
 TAAGGGATCAGCCAATGAAAGGCAGGTTTCAATCCAGCTTAAAGGATCAGATAGACCGGACCAGGAAGAA
 GAGAGGCGAGAAAGATGAGACGGAGTACGAGTACAGTGGCAGTGAAGGAGGAGGAGGAGGAAAGTGCCTGAG
 CAGGAGGGAGAGCCAAGTTCCATCGTCAATGTGCTGGAGAGTGGACTCTGCGACGTGATTTCTGAGGC
 TGCAGCAAGAGAACAAGGAACGGTCTGAGGCTCTGCGGAGACAGCAGCTTCTGCAGGAGCAGCAGCTCCG
 GGAGCAGGAGGAGTATAAGAGGCAGCTGCTGGCTGAGAGGCAGAAGCGGATTGAACAGCAGAAAGAACAG
 AGGAGGCGGCTGGAAGAGCAACAAGGAGAGAGCGTGAAGCCAGGAGGCAGCAGGAACGTGAGCAGCGGC
 GCGGAGAACAGGAGGAGAAGAGGCGTCTGGAGGAACTGGAAGGCGGCGTAAGGAAGAGGAAGAGAGGAG
 ACGGGCAGAAGACGAGAAGAGGCGAGTGGAGCGGAGCAGGAGTACATCAGGCGGAGCTAGAGGAAGAG
 CAGCGGCACCTGGAGATCCTGCAGCAGCAGCTGCTCCAGGAGCAGGCTATGTTACTGCACGACCACAGGA
 GGCCACACGCACAACAGCCGCCACCCCGCAGCAGCAGGACAGGAGCAAAACCCAGCTATCAGCTCCAGA
 GCCAAGCCTCACTACGACCCTGCTGACAGAGCTCGGGAGGTACAGTGGTCCACCTGGCATCTCTCAAG
 AACATGTCTCCCTGTCTCGAGATCCCATTCTTCAAGTACCCTTCTCCCAAATTCGCACACCACCATC
 TCCGCTCTCAGGACCATGTCCACCTTCCCGCAGTGAAGGGCTCAGTCAGAGCTCTGACTCTAAGTCGGA
 GGTACCTGAGCCACCCAAAAGGCTTGGTCTAGATCAGACAGTACGAGGTGCCTCAAGGGTCTCTGTG



[View online »](#)

AGAACGACATCTCGTTCCCCTGTCTGTCCCCTCGAGATTCTCCACTGCAGGGCAGTGGGCAGCAAAATA
 GCCAAGCAGGACAGAGAAATCCACCAGCAGTATTGAGCCCCGGCTTCTATGGGAGAGAGTGGAAAAGCT
 GGTCCCAGGCCAGGCAGTGGCAGCTCTCAGGGTCCAGCAACTCAGGATCCCAGCCTGGCTCCCATCCT
 GGGTCTCAGAGTGGCTCTGGTGAACGCTTCAGAGTGAATCATCATCCAAGTCTGAAGTTCTCCATCTC
 AGCGCCTTGAAAATGCAGCCAAAAACCTGAAGATAAGAAAGAAGTATTCGACCTCTCAAACCTGCTGT
 AAGGATTGACTTGACTGCGTTGGCCAAAGAGCTTCGAGCAGTGAAGATGTGCGGCCACCTCACAAAGTG
 ACAGAGATTCCCTCCTCAGTGAGGAGCTGGGACCACGGATGAGGAGGAGGAGATGTGAACAGCAGGAGG
 GGGCTGATGATTCCACCTCGGGCCAGAGGACACCAGAGCAGCGTCGCTCTGAATCTGAGCAACCGTGA
 GACAGAATCTGTGAAAACAATGATTGTTTCATGATGACGTAGAAAGTGAACCAGCCATGACCCCATCCAAG
 GAGGGCACCTAATCGTCCGCCAGACTCAGTCCGCTAGTAGCACACTCCAGAAACACAAATCTTCTCCTCT
 CCTTTACACCTTTTATAGACCCAGGTTACTACAGATCTCTCCATCTAGTGAACAACAGTTACTTCCGT
 TGTGGGATTTTCTGTGATGGGCTGAGACCAGAAGCCATAAGGCAAGATCCTACTCGAAAAGGCTCAGTG
 GTAATGTGAACCCACGAACACTAGGCCACAGAGTGATACCCCGAGATTCTGTAATACAAGAAGAGAT
 TAACTCAGAGATCCTGTGTGCTGCCTTATGGGAGTGAATTTGCTAGTTGGCACAGAGAGTGGCCTGAT
 GCTCTTGACAGAAGTGGCAAGGAAAGTGTACCCTCTGATCAGCCGGAGACGTTCCAGCAAAATGGAT
 GTACTTGAGGGCCTGAATGTCTGGTGACAATATCTGGCAAAAAGGATAAGTTACGCGTCTACTATTTAT
 CCTGGTTAAGAAATAAAATACTTCATAATGATCCGGAAGTTGAGAAGAAGCAGGGGTGGACCACCGTGGG
 CGACCTGGAAGGGTGCCTGCACTATAAAGTCGTAATAATGAAAGAATCAAGTTTCTGGTAATCGCTTTG
 AAGAGTTCTGTGGAAGTCTATGCATGGGCACCGAAGCCATATCACAATTTATGGCCTTTAAGTCATTTG
 GAGAACTGGTACATAAGCCATTACTGGTGGATCTACTGTGAGGAAGGCCAGAGGTTGAAAGTGATCTA
 TGGATCCTGTGCTGGATTCCATGCTGTTGATGTGGATTCCGGCTCAGTCTATGACATTTATACCAACA
 CACATTCAGTGTACCATCAAACCCATGCAATCATTATCTCCCAACACGGATGGAATGGAGTCTCTGG
 TGTGCTACGAAGATGAAGGGTTTATGTGAACACGTACGGAAGAATCACAAGGACGTTGTTCTCGAGTG
 GGGAGAGATGCCAACATCTGTAGCATACATCCGGTCAATCAGACAATGGGCTGGGAGAGAGAAGGCAATA
 GAGATACGCTCTGTGAAACTGGTCATTTGGACGGTGTGTTTATGCACAAAAGGCTCAGAGACTAAAGT
 TCCTGTGTGAACGTAATGACAAGGTGTTCTTTGCTTCCGCTCGCTCTGGCGGCAGCAGCCAGGTCTACTT
 CATGACCTTAGGCAGGACTTCCCTTCTGAGCTGGCATGACCTTAGGCAGGACTTCCCTTCTGAGCTGG

AGCGGACCGACGCGTACGCGGCCGCTCGAGCAGAAACTCATCTCAGAAGAGGATCTGGCAGCAAAATGATATCC
 TGGATTACAAGGATGACGACGATAAGGTTTAA

Protein Sequence:

>RR201398 representing NM_001106904
 Red=Cloning site Green=Tags(s)

MDVTEDEEEEEIKLEINMLKKYSHRNIATYYGAFIKKSPPGHDDQLWLVMFCGAGSITDLVKNTKGNTL
 KEDWIIAYISREILRGLAHLHIHHVIHRDIKQNVLLTENA EVKL VDFGVSAQLDRTVGRNRTFIGTPYWM
 APEVIACDENPDATYDYSRLWSCGITAIEAEGAPPLCDMHPMRALFLIPRNPPLRLKSKKWSKFFSF
 IEGCLVKNYMQRPSTEQLLKHPFIRDQPNERQVRIQLKDHIDRTRKKRGEKDETEYEYSGSEEEEEVEPE
 QEGEPSSIVNVPGESTLRRDFLRQLQENKERSEALRRQQLLQEQLREQEEYKRQLLAERQKRIEQKEQ
 RRRLEEQRREREARRQQEREQRRREQEERKRLLEELERRRKEEEERRRAEDEKRRVEREQEYIRRQLEEE
 QRHLEILQQQLLQEQAMLLHDHRRPHAQQPPPPQQDRSKPSYHAPEPKPHYDPADRAREVQWSHLASLK
 NNVSPVSRSHFSDPSPKFAHHHLRSQDPCPPSRSEGLSQSSDSKSEVPEPTQKAWSRSDSDEVPPRPV
 RTTSRSPVL SRRDSPLQGGQQNSQAGQRNSTSSIEPRLLWERVEKLVPRPGSGSSSGSSNSGSQPGSHP
 GSQSGSGERFVRSSSKSEGPSQRLENAAKKPEDKKEVFRPLKPAVRIDLALAKELRAVEDVRPPHKV
 TDYSSSEESGTTDEEEDVEQE GADDSTSGPEDTRAASLNLNGETESVKTMIVHDDVESEAMTPSK
 EGTLIVRQTQSASSTLQKHKSSSF TPFIDPRLLQISPSSTGTTVTSVVGFS CDGLRPEAIRQDPTRKGSV
 VNVNPTNTRPQSDTPEIRKYKRFNSEILCAALWGVNLLVGTESGLMLLDRSGQKQVYPLISRRRFQQMD
 VLEGLNVLVTISGKDKLRYYYLSWLRNKILHNDPEVEKKQGWTTVGDLEGVHYKVVYKRIKFLVIAL
 KSSVEVYAWAPKPYHKFMAFKSFGELVHKPLLVDLTVEEGQRLKVIYGCAGFHAVDSDS SVYDIYLP
 HIQCTIKPHAI IILPNTDGMELLVCEYEDGVYVNTYGRITKDVVLQWEMPTSVAYIRSNQTMGWGEKAI
 EIRSVETGHLDGVMHKRAQLKFLCERNDKVFFASVRS GSSQVYFMTLGR TSLLSWHDLRQDFPSEL

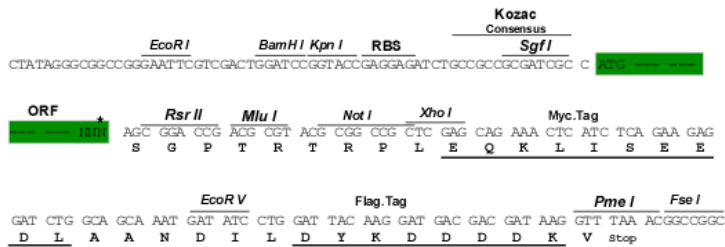
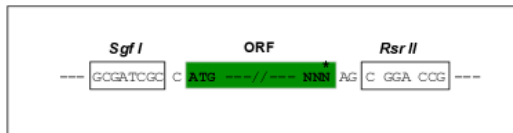
SGPTRRTRPLEQKLI SEEDLAANDILDYKDDDDKV

Restriction Sites:

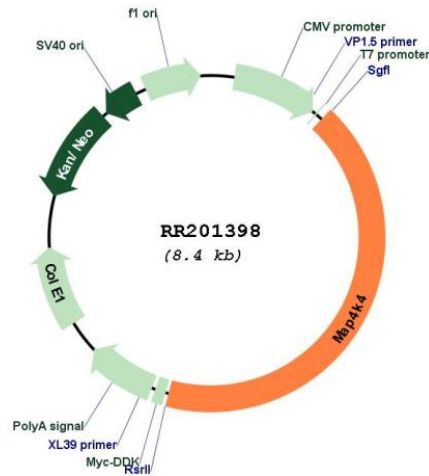
Sgfl-RsrII

Cloning Scheme:

Cloning sites used for ORF Shutting:



* The last codon before the Stop codon of the ORF

Plasmid Map:


ACCN: NM_001106904

ORF Size: 3534 bp

OTI Disclaimer: The molecular sequence of this clone aligns with the gene accession number as a point of reference only. However, individual transcript sequences of the same gene can differ through naturally occurring variations (e.g. polymorphisms), each with its own valid existence. This clone is substantially in agreement with the reference, but a complete review of all prevailing variants is recommended prior to use. [More info](#)

OTI Annotation: This clone was engineered to express the complete ORF with an expression tag. Expression varies depending on the nature of the gene.

Components: The ORF clone is ion-exchange column purified and shipped in a 2D barcoded Matrix tube containing 10ug of transfection-ready, dried plasmid DNA (reconstitute with 100 ul of water).

Reconstitution Method:

1. Centrifuge at 5,000xg for 5min.
2. Carefully open the tube and add 100ul of sterile water to dissolve the DNA.
3. Close the tube and incubate for 10 minutes at room temperature.
4. Briefly vortex the tube and then do a quick spin (less than 5000xg) to concentrate the liquid at the bottom.
5. Store the suspended plasmid at -20°C. The DNA is stable for at least one year from date of shipping when stored at -20°C.

RefSeq Size: 5254 bp

RefSeq ORF: 3537 bp

Locus ID: 301363

Cytogenetics: 9q22

MW: 135.1 kDa