

Product datasheet for **RR201362**

Taz (NM_001025748) Rat Tagged ORF Clone

Product data:

Product Type: Expression Plasmids
Product Name: Taz (NM_001025748) Rat Tagged ORF Clone
Tag: Myc-DDK
Symbol: Taz
Synonyms: MGC116399
Vector: pCMV6-Entry (PS100001)
E. coli Selection: Kanamycin (25 ug/mL)
Cell Selection: Neomycin
ORF Nucleotide Sequence: >RR201362 representing NM_001025748
Red=Cloning site Blue=ORF Green=Tags(s)

TTTTGTAATACGACTCACTATAGGGCGGCCGGAATTCGTCGACTGGATCCGGTACCGAGGAGATCTGCC
GCC**CGGATCGCC**

ATGCCCTCCACGTGAAGTGGCCATCCCCGGTGCCCCGACTCACCTGGACCCTAGCCAGCAGTGTCC
TCATGGGTCTAGTTGGCACCTACAGCTGCTTCTGGACCAAGTATATGAACCACCTTACCGTGTACAACAA
GGAAGTGTGTATGAGCTCATTGAGAACCGAGGTCTGCGACCCCTTTATCACCGTCTCTAACCACCAG
TCTTGCATGGATGACCCTCATCTCTGGGGATCCTGAAACTCCGCCACATCTGGAACCTGAAGTTGATGC
GTTGGACCCAGCAGCTGCAGACATCTGCTTACCAAGGAGCTGCATTCCCATTTCTTCAGCTTGGGCAA
ATGTGTGCTGTATGTCGAGGAGATGGTGTCTATCAGAAAGGGATGGACTTCATTTTGGAGAAGCTTAAC
CATGGGACTGGGTACACATCTTCCAGAAGGAAAAGTAAACATGAGTTCTGAGTTCTGAGTTCTGCGCTTCAAAT
GGGGAATTGGACGGCTGATTGCTGAGTGTATCTAAACCCCATCATCTGCCACTATGGCATGTTGGAAT
GAATGATGTCTCCCTAACAGTCCACCCTACTTCCCCCGCTTTGGACAGAAAATCACCGTGTGATTGGG
AAGCCCTCAGTACACTCCCTGTGCTTGAGCGGCTCCGGGCAGAAAACAAGTCAGCTGTGGAGATGCGGA
AAGCCCTCAGACTTCATTCAAGAGGAATCCAGCGGCTGAAGATGCAGGCAGAACAGCTCCACAATCA
TTCCAGCCTGGAAGA

ACGCGTACGCGGCCGCTCGAGCAGAAACTCATCTCAGAAGAGGATCTGGCAGCAAATGATATCCTGGATT
ACAAGGATGACGACGATAAGGTTTAA



[View online »](#)

Protein Sequence: >RR201362 representing NM_001025748
 Red=Cloning site Green=Tags(s)

MPLHVKWPFPAVPRLTWTLASSVVMGLVGTYSFCWTKYMNHLTVYNKEVLYELIENRGPATPLITVSNHQ
 SCMDPHLWGILKLRHIWNLKLMRWTPAAADICFTKELHSHFFSLGKCVPCRGDGVYQKGMDFILEKLN
 HGDWVHIFPEGKVNMSSEFLRFKWIIGRLIAEHLNPIILPLWHVGMNDVLPNSPPYFPRFGQKITVLIG
 KPFSTLPVLERLRAENKSAVEMRKALTDFIQEEFQRLKMQAEQLHNHFQGR

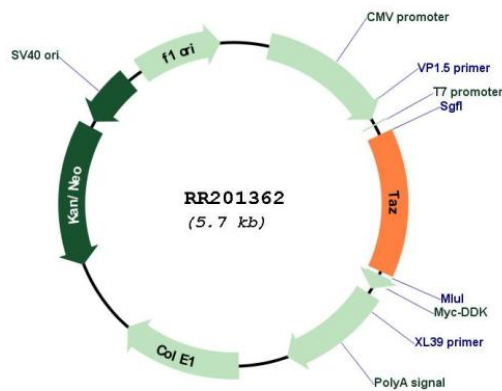
TRTRPLEQKLISEEDLAANDILDYKDDDDKV

Restriction Sites: SgfI-MluI

Cloning Scheme:



Plasmid Map:



ACCN: NM_001025748
 ORF Size: 786 bp

OTI Disclaimer:	The molecular sequence of this clone aligns with the gene accession number as a point of reference only. However, individual transcript sequences of the same gene can differ through naturally occurring variations (e.g. polymorphisms), each with its own valid existence. This clone is substantially in agreement with the reference, but a complete review of all prevailing variants is recommended prior to use. More info
OTI Annotation:	This clone was engineered to express the complete ORF with an expression tag. Expression varies depending on the nature of the gene.
Components:	The ORF clone is ion-exchange column purified and shipped in a 2D barcoded Matrix tube containing 10ug of transfection-ready, dried plasmid DNA (reconstitute with 100 ul of water).
Reconstitution Method:	<ol style="list-style-type: none">1. Centrifuge at 5,000xg for 5min.2. Carefully open the tube and add 100ul of sterile water to dissolve the DNA.3. Close the tube and incubate for 10 minutes at room temperature.4. Briefly vortex the tube and then do a quick spin (less than 5000xg) to concentrate the liquid at the bottom.5. Store the suspended plasmid at -20°C. The DNA is stable for at least one year from date of shipping when stored at -20°C.
RefSeq:	NM_001025748.1 , NP_001020919.1
RefSeq Size:	1813 bp
RefSeq ORF:	789 bp
Locus ID:	363521
Cytogenetics:	Xq37
MW:	30.4 kDa
Gene Summary:	human homolog may play a role in cardiolipin metabolism [RGD, Feb 2006]