

Product datasheet for **RR201321**

Kcng1 (NM_001106545) Rat Tagged ORF Clone

Product data:

Product Type:	Expression Plasmids
Product Name:	Kcng1 (NM_001106545) Rat Tagged ORF Clone
Tag:	Myc-DDK
Symbol:	Kcng1
Synonyms:	Kh2; Kv6.1
Vector:	pCMV6-Entry (PS100001)
E. coli Selection:	Kanamycin (25 ug/mL)
Cell Selection:	Neomycin



[View online »](#)

ORF Nucleotide Sequence:

>RR201321 representing NM_001106545
 Red=Cloning site Blue=ORF Green=Tags(s)

TTTTGTAATACGACTCACTATAGGGCGGCCGGGAATTCGTCGACTGGATCCGGTACCGAGGAGATCTGCC
 GCC**CGATCGCC**

ATGACCCTGTTACCAGGAGACAACCTCGACTATGACTATAGTGTCTAAGTTGTGCCTCAGACACCTCCT
 TCCACCCAGCCTTCTTCCACAGCGCCAGGCCATCAAAGCGTCTTCTACCGCAGGGCCCAACGGTTGGG
 ACCGCAGGACGACCTGCACCAGAGCATCTCACTTGGGGACCGCAGGCGACAGATCATCATCAACGTGGGT
 GGGATCAAGTACTCACTACCTTGGACCACACTGGATGAGTTCCCCTGACCGGGCTGGGCCAGCTCAAGG
 CCTGCACCAACTTCGACGACATCCTGAGCGTGTGTGATGACTATGACGTAACCTGCAACGAGTTCTTCT
 CGACCGCAACCCGGGGCCTTTGGCACCATCCTCACCTTCTGCGGGCCGGCAAGCTGCGCTGCTTCGG
 GAGATGTGCGCCCTGTCTTCCAGGAGGAGCTGCTGTACTGGGGCATTGCGGAGGACCACCTGGACGGCT
 GCTGCAAGCGCCGGTACCTGCAGAAAAATCGAGGAGTTTGTGAGATGATGGAGAGGGAGGATGAGGAGGA
 GCGCTGGACAGCGAGGATCAAGAGAGTGAGGGTCCATCCACCAGCGAGGGTCGCTGAGCCGCTGCATG
 AGGAGGCTGCGTGACATGGTGGAGAAGCCACACTCAGGGTTGCCTGGCAAGGTGTTGCCTGCCTGTCTG
 TTCTGTTTGTACCGTACCGCTGTCAACCTGTCTGTCAGCACCTGCCAGCCTGCGTGAGGAGGAGGA
 ACAGGGCCAGTGTCCCAAATGTGCCACAACGTCTTTCATCGTAGAGTCGGTGTGCGTGGGCTGGTTCTCC
 CTTGAGTTCCTGCTGCGGTTTCATCCAGGCACCCAGCAAGTTCCGCTTCTGCGGAGCCCGCTGACCTCA
 TCGATCTGGTGGCCATCCTGCCTTACTACGTACACTGCTGGTGGATGGCGCTGCCTCCAGCCGCCGCAA
 GCCAAGCACCGGCAACAGCTACCTGGACAAGTTGGGCTGGTGTGCGGTGCTGCGGGCGCTGCGCATC
 CTCTACGTGATGCGCTGGCCCGCATTCCCTGGGGCTGCAGACCCTGGGCTCACCGCACGCCGCTGCA
 CGCGTGAATTCGGGCTTCTGCTGCTTTCTGTGTGTGGCCATCGCTCTTTGCCCACTGCTCTACGT
 CATCGAATGAGATGGCAGACAGCCCGAATTCACCAGCATCCCGCCTGCTACTGGTGGGCTGTCTATC
 ACCATGACAACCGTGGGCTACGGAGACATGGTACCCCGGAGCACGCCGGGCCAGGTGGTGGCTCTGAGCA
 GCATCCTCAGCGGCATCCTCCTCATGGCCTTCCCGGTACCTCCATCTCCATACTTTCTCCCGCTTTA
 CCTGGAACCAAGCAGGAACAAGAACGGGTGCTGATCCGCCGGGCCAGTACCTCATCAAACCAAGTCT
 CAGCTCAGTGGCATGTCCAAGACAGTACATCTGTTTGAAGTGCCTCTTCAGACACTAGGGACAACA
 AC

AG**CGGACCG**ACGCGTACGCGGCCGCTCGAGCAGAACTCATCTCAGAAGAGGATCTGGCAGCAAATGATATCC
 TGGATTACAAGGATGACGACGATAAGGTTTAA

Protein Sequence:

>RR201321 representing NM_001106545
 Red=Cloning site Green=Tags(s)

MTLLPGDNSDYDYSALSCASDTSFHPAFFPQRQAIKGVFYRRAQRLGPQDDLHQSIISLGDRRRQIIINVG
 GIKYSLPWTTLDEFPLTRLGQLKACTNFDDILSVCCDDYDVTCEFFFDNRNPGAFGTILTFLRAGKLRLLR
 EMCALSFQEELLYWGIAEDHLDGCKRRYLQKIEEFAEMMEREDEEEALDSEDESEGPSTSEGRLSRCM
 RRLRDMVEKPHSGLPGKVFACLSVLFVTVTAVNLSVSTLPSLREEEEQGQCSQMCHNVFIVESVCVGFWS
 LEFLLRFIQAPSKFAFLRSPLTLIDLVAIIPYYVTLVDGAASSRRKPSTGNSYLDKVLVLRVLRALRI
 LYVMRLARHSLGLQTLGLTARRCTREFGLLLLFLCVAIALFAPLLYVIENEMADSPFTSIPACYWVAVI
 TMTTVGYGDMVPRSTPGQVVALSSILSGILLMAFPVTSIFHTFSRSYLELQEQERVLIRRAQYLKTKS
 QLSGMSQSDILFGSASSDTRDNN

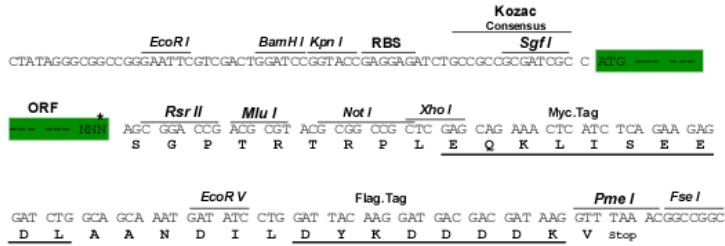
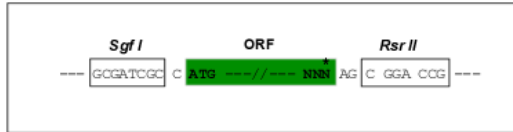
SGP**TRTRPLEQKLI**SEEDLAANDILDYKDDDDKV

Restriction Sites:

Sgfl-RsrII

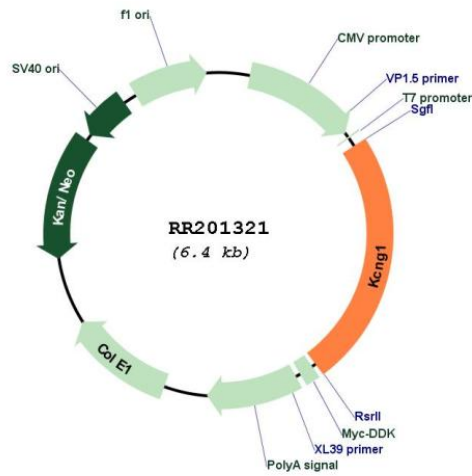
Cloning Scheme:

Cloning sites used for ORF Shuttling:



* The last codon before the Stop codon of the ORF

Plasmid Map:



ACCN:	NM_001106545
ORF Size:	1542 bp
OTI Disclaimer:	The molecular sequence of this clone aligns with the gene accession number as a point of reference only. However, individual transcript sequences of the same gene can differ through naturally occurring variations (e.g. polymorphisms), each with its own valid existence. This clone is substantially in agreement with the reference, but a complete review of all prevailing variants is recommended prior to use. More info
OTI Annotation:	This clone was engineered to express the complete ORF with an expression tag. Expression varies depending on the nature of the gene.
Components:	The ORF clone is ion-exchange column purified and shipped in a 2D barcoded Matrix tube containing 10ug of transfection-ready, dried plasmid DNA (reconstitute with 100 ul of water).
Reconstitution Method:	<ol style="list-style-type: none">1. Centrifuge at 5,000xg for 5min.2. Carefully open the tube and add 100ul of sterile water to dissolve the DNA.3. Close the tube and incubate for 10 minutes at room temperature.4. Briefly vortex the tube and then do a quick spin (less than 5000xg) to concentrate the liquid at the bottom.5. Store the suspended plasmid at -20°C. The DNA is stable for at least one year from date of shipping when stored at -20°C.
RefSeq:	NM_001106545.1 , NP_001100015.1
RefSeq Size:	2745 bp
RefSeq ORF:	1545 bp
Locus ID:	296395
UniProt ID:	D4AD53
Cytogenetics:	3q42
MW:	58 kDa
Gene Summary:	a putative K ⁺ channel [RGD, Feb 2006]