

## Product datasheet for **RR201311**

### **Cdk11 (NM\_001025121) Rat Tagged ORF Clone**

#### Product data:

**Product Type:** Expression Plasmids  
**Product Name:** Cdk11 (NM\_001025121) Rat Tagged ORF Clone  
**Tag:** Myc-DDK  
**Symbol:** Cdk11  
**Vector:** pCMV6-Entry (PS100001)  
**E. coli Selection:** Kanamycin (25 ug/mL)  
**Cell Selection:** Neomycin  
**ORF Nucleotide Sequence:** >RR201311 representing NM\_001025121  
**Red=Cloning site Blue=ORF Green=Tags(s)**

TTTTGTAATACGACTCACTATAGGGCGGCCGGAATTCGTCGACTGGATCCGGTACCGAGGAGATCTGCC  
GCC**GCGATCGCC**

ATGAAAAATACGAAAAATTGAAAGATTGGAGAAGGTTCTATGGGGTAGTGTTCAAGTGCAGAAACA  
GAGACACGGGTGAGATCGTGGCCATCAAGAGGTTTCTGGAAACCGAAGATGACCCTGTATAAAGAAAAAT  
CGCCCTTCGAGAAATCCGCATGCTCAAGCACTCAAGCATCCCAACCTCGTCAGCCTCCTGGAAGTCTTC  
CGCAGGAAGCGGGCGGCTTACCTGGTGTTCGAGTACTGCCACCACCGGTGCTTACGAGCTGGACAGAT  
ATCAGAGGGGGTACCAGAGCCTCTCGTGAAGAACATAACTTGGCAGACACTGCAGGCTGTGAATTTCTG  
CCATAAACACAACACTGCATACACAGAGATGTGAAGCCGAAAAACATTCTCATCACCAAACACTCAGTCATT  
AAGCTCTGTGACTTTGGGTTTGCACGGCTTCTCACTGGACCTGGTACTACTACTGACTACGTGGCCA  
CCAGGTGGTACCGCTCACCTGAGCTGCTAGTGGGAGACACAGTATGGCCCCCAGTAGATGTCTGGGC  
AATTGGGTGTGTGTTTGTGAGTTGCTGTCCGGAGTGCCTCTGTGGCCAGGAAAAATCCGATGTGGACCAG  
CTCTATCTGATAAGGAAAAACCTGGGGGACCTCATTCCCAGGCACCAGCAAGTATTTAGCATGAATCAGT  
ACTTCAGTGGGGTAAAAATCCAGACCCTGAAGACATGGAACACTTGAGTTGAAGTTTCCAACATCTC  
CTACTCTGCTCTGGGCTTCTAAAGGGCTGCCTCCACATGGACCTGCTGAGAGGCTGACATGTGAACAG  
CTATTGCAGCATCCGATTTTGCAGCATTGAGACGTTGGGGAATTGGCAAGACCACATGACAAACCAA  
CAAGGAAGACCCTGAGACAGAGTAGAAAGCACTTGACTGGGTTGCAGCACCTGCCTCAGCTAACCAGCAG  
CAGCGTCTCCCCGCTCTGGACAGGAAGAAGTACCCTGTGGTACCAGGAACCTTTAACTACCCTTTCCA  
AATATT

**ACGCGT**ACGCGGGCCGCTCGAGCAGAAACTCATCTCAGAAGAGGATCTGGCAGCAATGATATCCTGGATT  
ACAAGGATGACGACGATAAGGTTTAA



[View online »](#)

**Protein Sequence:** >RR201311 representing NM\_001025121  
 Red=Cloning site Green=Tags(s)

MEKYEKIGKIGEGSYGVVFKCRNRDTGQIVAIKRFLATEDDPVIKKIALREIRMLKQLKHPNLVSLLEVF  
 RRRKRLHLVFEYCHHTVLHELDYRQGVPEPLVKNITWQTLQAVNFCHKHNCIHRDVKPENILITKHSVI  
 KLCDFGFARLLTGPGDYTYDVVATRWYRSPPELLVGDTQYGPVVDVWAIGCVFAELLSGVPLWPGKSDVDQ  
 LYLIRKTLGDLIPRHQQVFSMNQYFSGVKIPDPEDMETLELKFPNISYSALGFLKGLHMDPAERLTCEQ  
 LLQHPYFDSIRDVVELARPHDKPTRKTLRQSRKHLTGLQHLPLQLTSSVLPALDRKKYHCGRNFNYHFP  
 NI

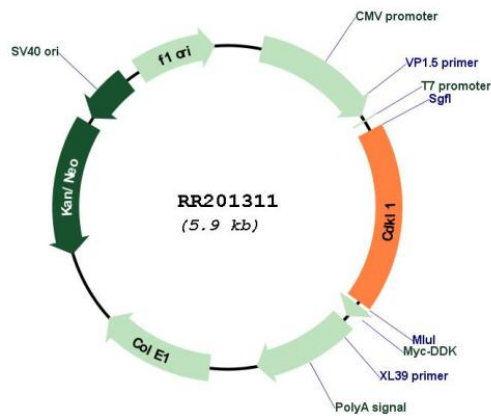
TRTRPLEQKLISEEDLAANDILDYKDDDDKV

**Restriction Sites:** SgfI-MluI

**Cloning Scheme:**



**Plasmid Map:**



**ACCN:** NM\_001025121

<b>ORF Size:</b>	1056 bp
<b>OTI Disclaimer:</b>	The molecular sequence of this clone aligns with the gene accession number as a point of reference only. However, individual transcript sequences of the same gene can differ through naturally occurring variations (e.g. polymorphisms), each with its own valid existence. This clone is substantially in agreement with the reference, but a complete review of all prevailing variants is recommended prior to use. <a href="#">More info</a>
<b>OTI Annotation:</b>	This clone was engineered to express the complete ORF with an expression tag. Expression varies depending on the nature of the gene.
<b>Components:</b>	The ORF clone is ion-exchange column purified and shipped in a 2D barcoded Matrix tube containing 10ug of transfection-ready, dried plasmid DNA (reconstitute with 100 ul of water).
<b>Reconstitution Method:</b>	<ol style="list-style-type: none"><li>1. Centrifuge at 5,000xg for 5min.</li><li>2. Carefully open the tube and add 100ul of sterile water to dissolve the DNA.</li><li>3. Close the tube and incubate for 10 minutes at room temperature.</li><li>4. Briefly vortex the tube and then do a quick spin (less than 5000xg) to concentrate the liquid at the bottom.</li><li>5. Store the suspended plasmid at -20°C. The DNA is stable for at least one year from date of shipping when stored at -20°C.</li></ol>
<b>RefSeq:</b>	<a href="#">NM_001025121.1</a> , <a href="#">NP_001020292.1</a>
<b>RefSeq Size:</b>	1861 bp
<b>RefSeq ORF:</b>	1059 bp
<b>Locus ID:</b>	314198
<b>UniProt ID:</b>	<a href="#">Q66HE7</a>
<b>Cytogenetics:</b>	6q24
<b>MW:</b>	40.9 kDa