

Product datasheet for **RR201292**

Rpap3 (NM_001004243) Rat Tagged ORF Clone

Product data:

Product Type:	Expression Plasmids
Product Name:	Rpap3 (NM_001004243) Rat Tagged ORF Clone
Tag:	Myc-DDK
Symbol:	Rpap3
Synonyms:	MGC94954
Mammalian Cell Selection:	Neomycin
Vector:	pCMV6-Entry (PS100001)
E. coli Selection:	Kanamycin (25 ug/mL)



[View online »](#)

ORF Nucleotide Sequence:

>RR201292 representing NM_001004243
 Red=Cloning site Blue=ORF Green=Tags(s)

TTTTGTAATACGACTCACTATAGGGCGGCCGGAATTCGTCGACTGGATCCGGTACCGAGGAGATCTGCC
 GCC**GCGATCGCC**

ATGACCTCGACAAGTAAGGCGGTTGAAGTGCAGCTCCAGGTGAAGCACAATGCGGAGGAAGTGCAGGATT
 TCATGAGGGACTTGGAGCACTGGGAAAAGACTATGAGGCAGAAGGATCTGGAGCTCAGAAGCAGAGTGG
 CGTCCCGAGGAGAATTTACCTCTATTCGAAATGGGAGTTTTAGGAAAAAGAAGAAACGTAACCTAAA
 GATTCTTCAAAAAACCAAAGAAGAAAACAAAAACAGAATAAAATCTTTCGATTATGATGCCTGGG
 CAAAACCTGATGTGGACAGTATTCTTGATGAGCTTGATAAAGAAGACAGCACCCACGATTCTGTGCCA
 GGAGTCAGAGTCGGACGAAGACGGTGTTCGTGTGGATTCCAGAAGGCTCTTGTCTAAAAGAAAAGGGC
 AACAGTACTTCAAGCAAGGGAATATGACGAAGCCATTGAATGCTACACGAAAGGCATGGATGCCGATC
 CCTACAACCTGTGTGCCAACAAACAGAGCATCTGCCTACTTTAGACTGAAAAATTTGCTGTTGCTGA
 GTCTGACTGTAATTTGGCAATTGCCTTAAGCAGGAGTTATACCAAGGCTTATGCCAGACGAGGTGCTGCT
 CGATTTGCTCTGCAGAAGTTAGAGGACGCTAGAAAAGATTATGTAAGTGTGTTAGAACTGGAACAGATA
 ACTTCAAGCAACGAATGAACTCAGGAAAATTGATCAGGCTTTAACATCGAAGGAAAATTCACATCCCAA
 AGCATTGCTGCCGTGATTAACCCAGCTGAAGGAGAGAGAAAAGCAAATGAAGATCAGCGGGGCAGGCAG
 AAGGCCATTGCAGAGAAAGACCTGGGCAATGGATTTTTCAAAGAGGGGAAGTACGAGCAAGCAATCGAAT
 GCTACACCCGTGGGATAGCAGCGGACAGCACCAATGCCCTGCTCCCCGCTAACAGAGCCATGGCCTACCT
 CAAGGTTCCAGAAATGAAGAAGCTGAAAGAGACTGCACACAGGCTATCTTACTAGATGGTTCATATTCA
 AAAGCTTTTCCAGAAGAGGAAGTCAAGGACATTTTTGGGAAAGATCAATGAGGCCAAGCAAGATTTCC
 AAAGTGTTTACTTCTGGAACCTGGAAAATAAACAGGCAGTGACCGAGCTTCCAGAATTAAGGAATTA
 AATTGAGAAAGGACGCTGGGATGATGTCTTTCTTGACTCCACACAGAGGCACAATGTGGTAAAGCCTGTA
 GACAGTCTCATCGGGGTACCTAAAGCACTCAAGAAGGTTTTTATTGAAGAACTGGCAATTTGATAG
 AGTCTGTGCGATGCACCAGAGAGCTCTGCCACCGTCCCCGAGAGTGACCGAGCAGCAGTGGCTGTGGACAC
 TGGACGCAAGAAGGATTTAGCCAGGGGACTCTGTGTCCTCAGGGGAGACACCAAGAGCTAAAGTGTTG
 AAAATAGAAGCAGTCGGCGACTCGTCAGCCCCACAGGCGCAGGTGGACGTGAAGCAGGGCGTGCCTCAGT
 CAGTGAGTGAGAAAACCTCTGTGAGGTAGCGCAGACGCCGGTCAAGTGGCCGCTGTAGTTCTGCCTCC
 AGTTCCTGCCAACTCCTCCAGCTGGAGTCTGATTTAGACAGTTGAGAAGTTCCCCGAGATGCTGTAT
 CAGTATGTGAAGAAAATTGAACCATCTTTGTATCCGAAGTTGTTTCAGAAAAACCTAGATCCAGATGTAT
 TCAATCAAATCATTAAAAATTTACACGACTTTTACGTTGAGAGGGAAAAGCCAGCTCTCATCTTTGAAGT
 CTTAGAAAAGCTTTCTCAGCTAAGAAGGTTGACATGGCGGTGATGTTTATGTCAGGAACTGAGAGAGAG
 CTCACAAAAGTATTATTCAATCACTTAGAAAAATCAGAATTGAAGGAGGATTCTGTTGAAGAACTCAAGA
 AAAGATACGGCGGTGGC

ACGCGTACGCGGGCCGCTCGAGCAGAACTCATCTCAGAAGAGGATCTGGCAGCAATGATATCCTGGATT
 ACAAGGATGACGACGATAAGGTTTAA

Protein Sequence: >RR201292 representing NM_001004243
Red=Cloning site Green=Tags(s)

MTSTSKAVELQLQVKNHAEELQDFMRDLEHWEKTMRQKDELRRQSGVPEENLPPIRNGSFRKKKKRKT
 DSSKKTKEENTKNRIKSFYDADAWAKLDVDSILDELDKEDSTHDSVSQSESEDEGVRVDSQKALVLKEG
 NKYFKQKGYDEAIECYTKGMDADPYNPVLPTNRASAYFRLKFFAVAESDCNLAIALSRSYTKAYARRGAA
 RFALQKLEDARKDYVKVLELEPDNFEATNELRKIDQALTSKENSHPKIDIAAVIKPAEGERKANEDQRGRQ
 KAIAEKDLGNGFFKEGKYEQAIECYTRGIAADSTNALLPANRAMAYLKVQKYEEAERDCTQAILLDGSYS
 KAFARRGTARTFLGKINEAKQDFETVLLLEPGNKQAVTELSRIKKELIEKGRWDDVFLDSTQRHNVVKPV
 DSPHRGSPKALKKVFIEETGNLIESVDAPESSATVPESDRAAVAVDTGRKKDFSQGDSVSSGETPRAKVL
 KIEAVGDSAPQAQVDVKQGVRSVSEKTSVRVAQTPGQLAAVLPVPANFQLESDFRQLRSSPEMLY
 QYVKKIEPSLYPKLFQKNLDPDFVNQIIKILHDFYVEREKPALIFEVLERLSQLRRFDMAVMFMSGTERE
 LTKVLFNHLEKSELKEDSVEELKKRYGGG

TRTRPLEQKLISEEDLAANDILDYKDDDDKV

Restriction Sites:

Sgfl-MluI

Cloning Scheme:



ACCN: NM_001004243

ORF Size: 1977 bp

OTI Disclaimer: The molecular sequence of this clone aligns with the gene accession number as a point of reference only. However, individual transcript sequences of the same gene can differ through naturally occurring variations (e.g. polymorphisms), each with its own valid existence. This clone is substantially in agreement with the reference, but a complete review of all prevailing variants is recommended prior to use. [More info](#)

OTI Annotation: This clone was engineered to express the complete ORF with an expression tag. Expression varies depending on the nature of the gene.

Components: The ORF clone is ion-exchange column purified and shipped in a 2D barcoded Matrix tube containing 10ug of transfection-ready, dried plasmid DNA (reconstitute with 100 ul of water).

Reconstitution Method:

1. Centrifuge at 5,000xg for 5min.
2. Carefully open the tube and add 100ul of sterile water to dissolve the DNA.
3. Close the tube and incubate for 10 minutes at room temperature.
4. Briefly vortex the tube and then do a quick spin (less than 5000xg) to concentrate the liquid at the bottom.
5. Store the suspended plasmid at -20°C. The DNA is stable for at least one year from date of shipping when stored at -20°C.

RefSeq: [NM_001004243.1](#), [NP_001004243.1](#)

RefSeq Size: 2220 bp

RefSeq ORF: 1980 bp

Locus ID: 300189

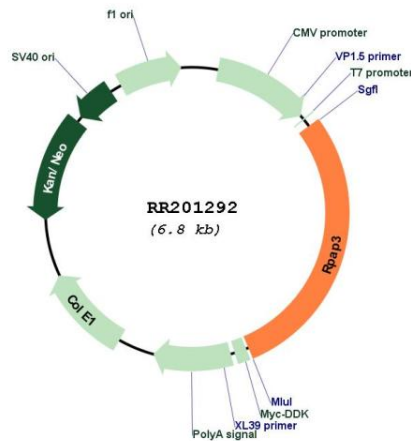
UniProt ID: [Q68FQ7](#)

Cytogenetics: 7q36

MW: 74.6 kDa

Gene Summary: Forms an interface between the RNA polymerase II enzyme and chaperone/scaffolding protein, suggesting that it is required to connect RNA polymerase II to regulators of protein complex formation.[UniProtKB/Swiss-Prot Function]

Product images:



Circular map for RR201292