

Product datasheet for **RR201288**

Map1lc3a (NM_199500) Rat Tagged ORF Clone

Product data:

Product Type: Expression Plasmids
Product Name: Map1lc3a (NM_199500) Rat Tagged ORF Clone
Tag: Myc-DDK
Symbol: Map1lc3a
Synonyms: LC3-I; LC3-II; LC3A
Mammalian Cell Selection: Neomycin
Vector: pCMV6-Entry (PS100001)
E. coli Selection: Kanamycin (25 ug/mL)
ORF Nucleotide Sequence: >RR201288 representing NM_199500
 Red=Cloning site Blue=ORF Green=Tags(s)

TTTTGTAATACGACTCACTATAGGGCGCCGGGAATTCGTCGACTGGATCCGGTACCGAGGAGATCTGCC
 GCC**CGGATCGCC**

ATGCCCTCCGACCGCCCTTTCAAGCAGCGGCGCAGCTTCGCCGACCGCTGTAAGGAGGTGCAGCAGATCC
 GTGACCAGCACCCAGCAAGATCCCGGTGATCATCGAGCGCTACAAGGGTGAGAAGCAGCTGCCTGTCTCT
 GGATAAGACCAAGTTTCTGGTCCCAGACCATGTTAACATGAGCGAGTTGGTCAAGATCATCCGGCGCCGC
 CTGCAACTCAACCCACGCAGGCCTTCTCCTGCTGGTGAACCAGCACAGCATGGTGAGTGTATCCACAC
 CCATCGCTGACATCTATGAACAGGAGAAGGATGAAGACGGATTCTCTACATGGTCTATGCCTCCAAGA
 AACCTTCGGCTTC

ACGCGTACGCGGCCGCTCGAGCAGAACTCATCTCAGAAGAGGATCTGGCAGCAAATGATATCCTGGATT
 ACAAGGATGACGACGATAAGGTTTAA

Protein Sequence: >RR201288 representing NM_199500
 Red=Cloning site Green=Tags(s)

MPSDRPFKQRRSFADRCKEVQQIRDQHPKIPVIERIERYKGEKQLPVLDKTKFLVPDHVNMSELVKIIRRR
 LQLNPTQAFFLLVNQHSMVSVSTPIADIYEQEKDEDFLYMVYASQETFGF

TRTRPLEQKLISEEDLAANDILDYKDDDDKV

Restriction Sites: Sgfl-MluI



[View online »](#)

Cloning Scheme:


ACCN: NM_199500

ORF Size: 363 bp

OTI Disclaimer: Due to the inherent nature of this plasmid, standard methods to replicate additional amounts of DNA in E. coli are highly likely to result in mutations and/or rearrangements. Therefore, OriGene does not guarantee the capability to replicate this plasmid DNA. Additional amounts of DNA can be purchased from OriGene with batch-specific, full-sequence verification at a reduced cost. Please contact our customer care team at custsupport@origene.com or by calling 301.340.3188 option 3 for pricing and delivery.

The molecular sequence of this clone aligns with the gene accession number as a point of reference only. However, individual transcript sequences of the same gene can differ through naturally occurring variations (e.g. polymorphisms), each with its own valid existence. This clone is substantially in agreement with the reference, but a complete review of all prevailing variants is recommended prior to use. [More info](#)

OTI Annotation: This clone was engineered to express the complete ORF with an expression tag. Expression varies depending on the nature of the gene.

Components: The ORF clone is ion-exchange column purified and shipped in a 2D barcoded Matrix tube containing 10ug of transfection-ready, dried plasmid DNA (reconstitute with 100 ul of water).

Reconstitution Method:

1. Centrifuge at 5,000xg for 5min.
2. Carefully open the tube and add 100ul of sterile water to dissolve the DNA.
3. Close the tube and incubate for 10 minutes at room temperature.
4. Briefly vortex the tube and then do a quick spin (less than 5000xg) to concentrate the liquid at the bottom.
5. Store the suspended plasmid at -20°C. The DNA is stable for at least one year from date of shipping when stored at -20°C.

RefSeq: [NM_199500.2](#), [NP_955794.1](#)

RefSeq Size: 969 bp

RefSeq ORF: 366 bp

Locus ID: 362245

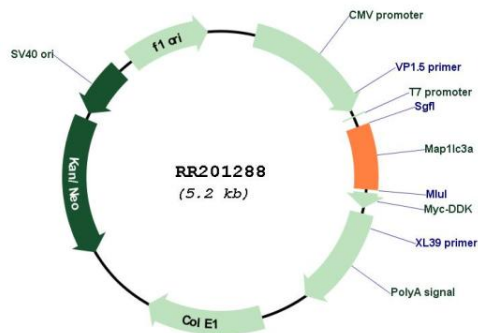
UniProt ID: [Q6XVN8](#)

Cytogenetics: 3q41

MW: 14.3 kDa

Gene Summary: light chain subunit of MAP1A and MAP1B microtubule-associated proteins; mediates interactions between microtubules and the cytoskeleton [RGD, Feb 2006]

Product images:



Circular map for RR201288