

## Product datasheet for **RR201265**

### Angptl3 (NM\_001025065) Rat Tagged ORF Clone

#### Product data:

Product Type: Expression Plasmids  
 Product Name: Angptl3 (NM\_001025065) Rat Tagged ORF Clone  
 Tag: Myc-DDK  
 Symbol: Angptl3  
 Mammalian Cell Selection: Neomycin  
 Vector: pCMV6-Entry (PS100001)  
 E. coli Selection: Kanamycin (25 ug/mL)  
 ORF Nucleotide Sequence: >RR201265 representing NM\_001025065  
 Red=Cloning site Blue=ORF Green=Tags(s)

TTTTGTAATACGACTCACTATAGGGCGGCCGGAATTCGTCGACTGGATCCGGTACCGAGGAGATCTGCC  
 GCC**CGATCGCC**

ATGCACACAATTAAGCTGCTCCTTTTTGTTGTTCTCTAGTAATTCGTCCAGAGTTGATCCAGACCTTT  
 CGCCATTTGATTCTGTACCGTCAGAGCCAAAATCAAGATTTGCTATGTTGGATGATGTCAAAATTTAGC  
 CAATGGCCTCCTGCAGCTGGGTCATGGTCTTAAAGATTTGTCCATAAGACAAAGGGACAAATTAATGAC  
 ATATTTCCAGAAGCTCAACATATTTGATCAGTGTTTTTATGACCTATCATTCAAACCAATGAAATCAAAG  
 AAGAGGAAAAGGAGCTAAGAAGAACCACATCTAACTACAAGTTAAAAACGAAGAGGTGAAGAATATGTC  
 ACTTGAAGTGAAGTCAAAGCTTAAAGTCTACTGGAGGAGAAGATGGCGCTCCAACACAGAGTCAGGGCT  
 TTGGAGGAACAGCTGACCAGCTTGGTTCAGAACCCTGGGGCTCGGGAGCACCCAGAGGTAACGTACAC  
 TAAAAAGTTTTGTAGAACAGCAAGATAACAGCATAAGAGAAGTCTCCAGAGTGTGAAGAACAATATAA  
 ACAACTAAGTCAACAGCACATTCAGATAAAAGAAATAGAAAATCAGCTCAGAAAGACTGGCATTCAAGAA  
 CCCACTGAAAATCTCTTTATTCTAAACCAAGAGCACCAAGAAGTCTCCCTCTTCATCTGAAGGAAG  
 CAAAAAATAGAACAAAGATGATCTGCCTGCTGACTGCTCTGCCATTTAATCAGAGGTGAACATAACAAG  
 TGGCGTGATACTATTAGACCAAGCAGCTCTCAAGTGTAAATGTCTACTGTGACACCAATCAGGCACT  
 CCACGGACATTAATCAACACCGAAAGATGGCTCTAAAAGTCTCAACCAACAGTGGGAAAAGTACGAAA  
 AGGGTTTTGGGAGGCTTGATGGTAAAGTATTTCTTGCATCACTCACTTATCTGT

**ACGCGT**ACGCGGCCGCTCGAGCAGAAACTCATCTCAGAAGAGGATCTGGCAGCAAATGATATCCTGGATT  
 ACAAGGATGACGACGATAAGGTTTAA



[View online »](#)

**Protein Sequence:** >RR201265 representing NM\_001025065  
Red=Cloning site Green=Tags(s)

MHTIKLLL FV VPLVISSRVDPDLS PFDSVPSEPKSRFAMLDDVKILANGLLQLGHGLKDFVHKTKGQIND  
 IFQKLNIFDQCFYDLSLQTNEIKEEEKELRRTTSKLQVKNEEVKNSLELNSKLESLLEEKMALQHRVRA  
 LEEQLTSLVQNPPGAREHPEVTSLSKSFVEQQDNSIRELLQSVEEQYKQLSQQHIQIKEIENQLRKTGIQE  
 PTENSLYSKPRAPRTTTPPLHLKEAKNIEQDDL PADCSAIYNRGEHTSGVYTI RPSSSQVFNVYCDTQSGT  
 PRTL IQHRKDG SQNFNQWENYEKGFGRLDGKVISLHHSLIC

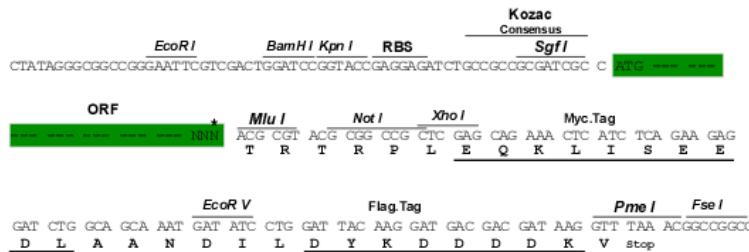
TRTRPLEQKLISEEDLAANDILDYKDDDDKV

**Chromatograms:** [https://cdn.origene.com/chromatograms/ja1953\\_b03.zip](https://cdn.origene.com/chromatograms/ja1953_b03.zip)

**Restriction Sites:** Sgfl-MluI

**Cloning Scheme:**

Cloning sites used for ORF Shuttling:



\* The last codon before the Stop codon of the ORF

**ACCN:** NM\_001025065

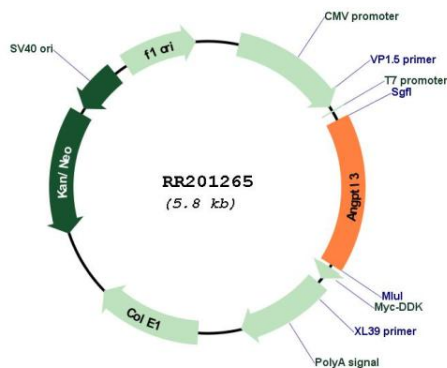
**ORF Size:** 966 bp

**OTI Disclaimer:** Due to the inherent nature of this plasmid, standard methods to replicate additional amounts of DNA in E. coli are highly likely to result in mutations and/or rearrangements. Therefore, OriGene does not guarantee the capability to replicate this plasmid DNA. Additional amounts of DNA can be purchased from OriGene with batch-specific, full-sequence verification at a reduced cost. Please contact our customer care team at [custsupport@origene.com](mailto:custsupport@origene.com) or by calling 301.340.3188 option 3 for pricing and delivery.

The molecular sequence of this clone aligns with the gene accession number as a point of reference only. However, individual transcript sequences of the same gene can differ through naturally occurring variations (e.g. polymorphisms), each with its own valid existence. This clone is substantially in agreement with the reference, but a complete review of all prevailing variants is recommended prior to use. [More info](#)

- OTI Annotation:** This clone was engineered to express the complete ORF with an expression tag. Expression varies depending on the nature of the gene.
- Components:** The ORF clone is ion-exchange column purified and shipped in a 2D barcoded Matrix tube containing 10ug of transfection-ready, dried plasmid DNA (reconstitute with 100 ul of water).
- Reconstitution Method:**
1. Centrifuge at 5,000xg for 5min.
  2. Carefully open the tube and add 100ul of sterile water to dissolve the DNA.
  3. Close the tube and incubate for 10 minutes at room temperature.
  4. Briefly vortex the tube and then do a quick spin (less than 5000xg) to concentrate the liquid at the bottom.
  5. Store the suspended plasmid at -20°C. The DNA is stable for at least one year from date of shipping when stored at -20°C.
- RefSeq:** NM\_001025065.1, NP\_001020236.1
- RefSeq Size:** 1785 bp
- RefSeq ORF:** 969 bp
- Locus ID:** 502970
- Cytogenetics:** 5q33
- MW:** 37.4 kDa

**Product images:**



Circular map for RR201265