

Product datasheet for RR201247

Gpr182 (NM_053302) Rat Tagged ORF Clone

Product data:

Product Type: Expression Plasmids
 Product Name: Gpr182 (NM_053302) Rat Tagged ORF Clone
 Tag: Myc-DDK
 Symbol: Gpr182
 Synonyms: Admr
 Mammalian Cell Selection: Neomycin
 Vector: pCMV6-Entry (PS100001)
 E. coli Selection: Kanamycin (25 ug/mL)
 ORF Nucleotide Sequence: >RR201247 representing NM_053302
 Red=Cloning site Blue=ORF Green=Tags(s)

TTTTGTAATACGACTCACTATAGGGCGCCGGGAATTCGTCGACTGGATCCGGTACCGAGGAGATCTGCC
 GCC**CGATCGCC**

ATGTCAGTCATACCCAGCTCCAGGCCGGTCTCCACCTTGGCACCTGACAATGATTTAGAGAGATCCACA
 ACTGGACAGAGCTGCTCCATCTTTCAACCAACCTTTTCTGATTGCCACATGGAACCTCAATGAGAACAC
 CAAACAAGTGGTCTCTTTGTCTTCTACCTGGCCATCTTGTGGTAGGGTAGTGGAGAAGCTCCTGGTG
 ATATGTGCAACTGCCCGCTCAGGCCGGTGGGGATGCTGAACCTATACATCCTCAACATGGCCGTCCG
 CGGACCTGGGCATCATCCTGTCTGCCTGTTGGATGCTGGAGGTCATGCTGGAGTACACCTGGCTCTG
 GGGCAGCTTCTCCTGTGCTTATTATTATTTCTACCTTGCCAACATGTACAGCAGCATCTTCTTCTCCT
 ACCTGCCTCAGCATTGACCGCTACGTCACCCTACCAATACCTCTCCCTCCTGGCAGCGCCACCAGCACC
 GAATACGGAGGGCCGTGTGCGCAGGCGTCTGGTCTCTCCGCCATCATCCCACTGCCTGAGGTGGTACA
 TATCCAGCTGCTGGATGGCTCCGAGCCCATGTGCCTCTTCTAGCACCTTTTGAACGTACAGCGCCTGG
 GCCCTGGCAGTGGCCCTGTGCGCTACCATCCTGGGCTTCTACTGCCTTTTCTCTCATCGCAGTGTTTA
 ATATCCTGTCAGCCTGCCGGCTTCGGAGGCAAGGGCAGACAGAGAGCAGGCGCCACTGTCTGTTGATGTG
 GGCTTACATAGCTGTCTTTGTCACTGTGCTGGCTGCCCTACCACGTGACTATGCTGCTGCTCACTGTCAC
 ACAACCCACATCTTCTCACTGCAACCTGGTTAACTTCTCTACTTCTTCTACGAAATCATTGACTGCT
 TCTCCATGCTACACTGTGTCGCAACCCATCCTCTACAACCTTTCTCAGCCCGAGCTTCCGGGGCCGACT
 GCTGAGCCTTGTGGTCCGTTACCTTCCCAAGGAGCAGGCCAGGGCAGCAGCGGTCGAGCCTCCTTTCA
 TCTTCCACCCAGCACTCCATCATCATTACCAAAGAGGGCAGCCTGCCCGCTGCAGCGGATCTGCACACC
 ACGCCATCAGAAACGTGCAGGCCCTCTCTGCCTCCGAACACCTCACCTACACTCTGCAATTCCATAGC
 CAGC

ACGCGTACGCGGCCGCTCGAGCAGAACTCATCTCAGAAGAGGATCTGGCAGCAATGATATCCTGGATT
 ACAAGGATGACGACGATAAGGTTTAA



Protein Sequence: >RR201247 representing NM_053302
Red=Cloning site Green=Tags(s)

MSVIPSSRPVSTLAPDNDFREIHNWTELLHLFNQTFSDCHMELNENTKQVVLFFVFLAIFVVGLVENLVV
 ICVNCRRSRVGMNLNLYILNMAVADLGIILSLPVWMLVMEYTWLWGSFSCRFIHYFYLANMYSSIFFL
 TCLSIDRYVTLTNTSPSWQRHQHRIRRAVCAGVWVLSAIIPLPEVVHIQLLDGSEPMCLFLAPFETYSAW
 ALAVALSATILGFLLPFPLIAVFNILSACRLRRQGQTESRRHCLLMWAYIAVFVICWLPYHVTMLLLTLH
 TTHIFLHCNLVNFLYFFYEIIDCFMHLHCVANPILYNFLSPSFRGRLLSLVVRVYLPKEQARAAGGRASS
 SSTQHSIIITKEGSLPAAADLHTHAIRNVQASSLPPNTSPTLCNSIAS

TRTRPLEQKLISEEDLAANDILDYKDDDDKV

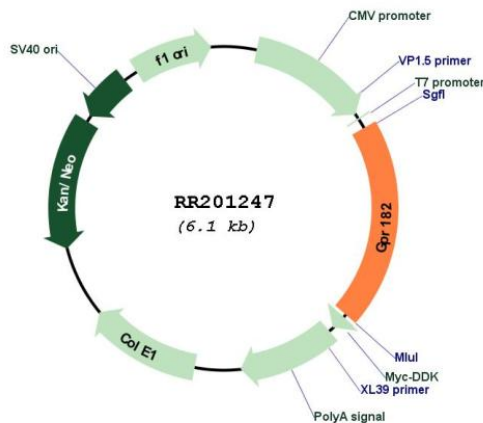
Restriction Sites:

SgfI-MluI

Cloning Scheme:



Plasmid Map:



ACCN:

NM_053302

ORF Size:	1194 bp
OTI Disclaimer:	The molecular sequence of this clone aligns with the gene accession number as a point of reference only. However, individual transcript sequences of the same gene can differ through naturally occurring variations (e.g. polymorphisms), each with its own valid existence. This clone is substantially in agreement with the reference, but a complete review of all prevailing variants is recommended prior to use. More info
OTI Annotation:	This clone was engineered to express the complete ORF with an expression tag. Expression varies depending on the nature of the gene.
Components:	The ORF clone is ion-exchange column purified and shipped in a 2D barcoded Matrix tube containing 10ug of transfection-ready, dried plasmid DNA (reconstitute with 100 ul of water).
Reconstitution Method:	<ol style="list-style-type: none">1. Centrifuge at 5,000xg for 5min.2. Carefully open the tube and add 100ul of sterile water to dissolve the DNA.3. Close the tube and incubate for 10 minutes at room temperature.4. Briefly vortex the tube and then do a quick spin (less than 5000xg) to concentrate the liquid at the bottom.5. Store the suspended plasmid at -20°C. The DNA is stable for at least one year from date of shipping when stored at -20°C.
RefSeq:	NM_053302.3 , NP_445754.2
RefSeq Size:	1908 bp
RefSeq ORF:	1197 bp
Locus ID:	29307
Cytogenetics:	7q22
MW:	45.2 kDa
Gene Summary:	seven-transmembrane receptor that binds adrenomedullin, a potent vasodilator peptide [RGD, Feb 2006]