

Product datasheet for **RR201226**

Klh11 (NM_001105838) Rat Tagged ORF Clone

Product data:

Product Type:	Expression Plasmids
Product Name:	Klh11 (NM_001105838) Rat Tagged ORF Clone
Tag:	Myc-DDK
Symbol:	Klh11
Mammalian Cell Selection:	Neomycin
Vector:	pCMV6-Entry (PS100001)
E. coli Selection:	Kanamycin (25 ug/mL)



[View online »](#)

ORF Nucleotide Sequence:

>RR201226 representing NM_001105838
 Red=Cloning site Blue=ORF Green=Tags(s)

TTTTGTAATACGACTCACTATAGGGCGGCCGGGAATTCGTCGACTGGATCCGGTACCGAGGAGATCTGCC
 GCC**CGCATCGC**C

ATGGCGCGGCTGTGGCAGCGCGGCTGCGGCTGCGGCCGCGGCAGCATCTTTCAAGTGTGGAGATGG
 AGAGCATGGAGACTGCCGTCGCTGGTCCGCGAGTCTGGCCGCCGAGGTCGAGGCAGTGGCACGGTAGA
 CTTTGTGACCGGGGCTGGGATCTCTACCCTTGTGACACGGGCGGGGGGATCCGGGCCAGAGGCCGAG
 GACTTCGAGTGCAGTACTCACTGCTCCGAGTTGCTTGGCGCAGAACGAGCAGCGGCGTCAAGTCTGT
 TCTGCGACATCACCTGTGCTTCGGTGGGGCCGGAGGTCGCGAGTTCGAGCCCACCGCTCGGTGCTGGC
 CGCCGCCACCGAGTACTCACGCCCTTGTCTCAGGCCAGTTTTCGGAATCGCGGTGAGGCCGGGTAGAG
 ATGCGCAAGTGGAGCTCGGAGCCGGACCCGAACCTGACACGGTAGAAGCCGTTATCGAGTACATGTACA
 CCGGGCGCATCCGAGTGAGCACCGGCAGCGTGCACGAGGTTGGAGCTGGCGGACAGATTTCTATTAAT
 TCGTTTTAAAAGAATTCTGTGGAGAATTTCTCAAGAAAAAATTCTCTCAAATTTGTGTGCCATTAC
 AGCTTAGCCACATGTATACCCTGAGCCAGCTTGTCTGAAAGCTGCAGATATGATTCGGAGAAATTTCT
 ATAAAGTCATTACGAGACGAGGAATTTTACACTTTACCTTTCCATCTCATTGAGACTGGCTTTCAGACCT
 GGAGATTACTGTGGATTCTGAGGAGTTCTTTTTGAAACGGTTTTGAAGTGGGTTTCAGAGAAATGCCGAA
 GAGAGAGAGATACTTTGAAGAATTTTTAAATTAAGTGGTGTCCCAGATGAAACCCACCTACCTTA
 CGCGGCATGTCAAACAGAGCGGCTGGTGGCCAATAATGAAGTTTGTGTCAAGCTGGTGGCTGAAGCAGT
 GGAGAGGCATGCGCTCAGAGCAGAGAATACAGTCTGGCACACTGCAACATCCCACTTCGCAAGTCTCA
 CTGTTACCTCGCTATGGACAAAACATGGATGTGATCATGGTTCATCGGAGGTGTGTGAGAAGGAGAGACT
 ATTTAAGTGAATGTAGGATATTTCTGTTGATGAGGATAGATGGGTAATCTGCCCCACATTCATAATCA
 CCTTGATGGACATGCCGTTGCAATTACAGAATCGTATGTGTATGTTGCTGGCTCCATGGAACCCAGGTTTT
 GCTAAAATGTGGAAGATACAACCCAAACCTGAATACTTGGAAACAGTTTTGTAGTCTGATGACCAGAA
 AGCACTCTTTGGGCTAACAGAAGTCAAAGGGAAGCTGTATAGCATTGGAGGACATGAAAATTTAGCCC
 TGGCTTTAAAGATGTGACTGTTTACAATCCTGAGCTTGATAAGTGGCACAATTTAGAGTCAGCACCAAAG
 ATTCCTCGAGATGTCAAAGCACTAGCCGTTGAGGACCGTTTTGTGTACATTGCTGCCCGTACGCCTGTGG
 ACCGGGACACCGAGGATGGACTGAAGGCTGTAATTAAGTGTATGATACAGAGACTCGACAGTGGCAAGA
 TGTGGAATCTTTGCCGCTTATTGACAATACTGTTTTTTCCAGATGTCTGTGGTCAATTCAACTTCTAT
 CAGACAGCATCATGCTGTCCCAAGATTAAGTCTTTAGAAAATGAAGAGGCAGTAAGGAAGATTGCTGGTC
 AGGTGTCTGATGATCCTGGAAGCCTGCCTCCAGAAGTCTGAGCATCGAAGGAGCAGCCATTTGCTA
 CTACAGAGATGATGCTTTCATTATTGGGGGCTGGAAGAACAGCGATGACATTGACAAGCAGTATCGGAAG
 GAGGCCTACCGGTACTGTGCTGAGAGAAAGAGGTGGATGCTCCTCCCTCCAATGCCTCAGCCCCGTTGCA
 GGGCCACTGCTTGCCACGTGAGGATCCCCTACCGGTACTTGCACGGCACACAGAGATACCCCATGCCTCA
 AAATTAATGTGGCAGAAGGACCGCATCCGACAGATGCAAGAGATACATCGGCATGCCCTGAACATGCGC
 AGAGTGCCAAGTCCCAGATTGAATGC

ACGCGTACGCGGCCGCTCGAGCAGAACTCATCTCAGAAGAGGATCTGGCAGCAAATGATATCCTGGATT
 ACAAGGATGACGACGATAAGGTTTAA

Protein Sequence: >RR201226 representing NM_001105838
 Red=Cloning site Green=Tags(s)

MAAAVAAAAAAAAAASFQVLEMESMETAVAGSASLAAEVRGSGTVDFVTGAGISTLVDTGGGDPGPEAE
 DFCSTHCSLSWRQNEQRRQGLFCDITLCFGGAGGREFRAHRSVLAAATEYFTPLLSGQFSESRSGRVE
 MRKWSSEPGPEPDTVEAVIEYMYTGRIRVSTGVSHEVLELADRFLLRIRLKEFCGEFLKKLHLSNCVAIH
 SLAHMYTLSQLALKAADMIRRFYKVIQDEEFYTLPFHLIRDWLSLEITVDSEEVLFETVLKWQRNAE
 ERERYFEELFKLLRSLQMKPTYLTRHVKPERLVANNEVCVKLVAEAVERHALRAENIQSGLQHPTSQVS
 LLPRYGQNMVDVIMVIGGVSEGGDYLSECVGYFVDEDRWVNLPHIHNHLDGHAVAITESYVYVAGSMPEGF
 AKTVERYPNPNLNTWEHVCSLMTRKHSFGLTEVKGKLYSIGGHGNFSPGFKDVTVYNPELDKWHNLESAPK
 ILRDVKALAVEDRFVYIAARTPVDRDTEGLKAVITCYDTETRQWQDVESLPLIDNYCFFQMSVNSNFY
 QTASCCPKSYSLNEEAVRKIAGQVSDEILESLPPEVLSIEGAAICYRDDVFIIGGWKNSDDIDKQYRK
 EAYRYCAERKRWMLLPPMPQPCRATACHVRIPYRYLHGTQRYMPQNLMWQKDRIRQMQEIHRRHALNMR
 RVPSSQIEC

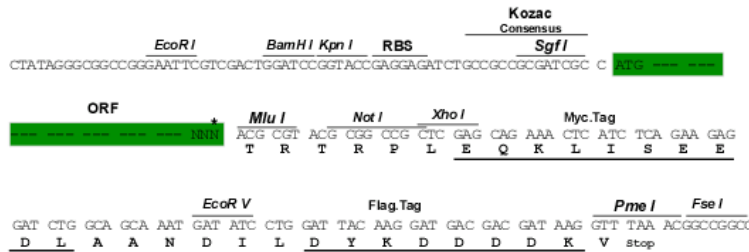
TRTRPLEQKLISEEDLAANDILDYKDDDDKV

Restriction Sites:

Sgfl-MluI

Cloning Scheme:

Cloning sites used for ORF Shuttling:



* The last codon before the Stop codon of the ORF

ACCN: NM_001105838

ORF Size: 2127 bp

OTI Disclaimer: The molecular sequence of this clone aligns with the gene accession number as a point of reference only. However, individual transcript sequences of the same gene can differ through naturally occurring variations (e.g. polymorphisms), each with its own valid existence. This clone is substantially in agreement with the reference, but a complete review of all prevailing variants is recommended prior to use. [More info](#)

OTI Annotation: This clone was engineered to express the complete ORF with an expression tag. Expression varies depending on the nature of the gene.

Components: The ORF clone is ion-exchange column purified and shipped in a 2D barcoded Matrix tube containing 10ug of transfection-ready, dried plasmid DNA (reconstitute with 100 ul of water).

Reconstitution Method:

1. Centrifuge at 5,000xg for 5min.
2. Carefully open the tube and add 100ul of sterile water to dissolve the DNA.
3. Close the tube and incubate for 10 minutes at room temperature.
4. Briefly vortex the tube and then do a quick spin (less than 5000xg) to concentrate the liquid at the bottom.
5. Store the suspended plasmid at -20°C. The DNA is stable for at least one year from date of shipping when stored at -20°C.

RefSeq: [NM_001105838.1](#), [NP_001099308.1](#)

RefSeq Size: 2441 bp

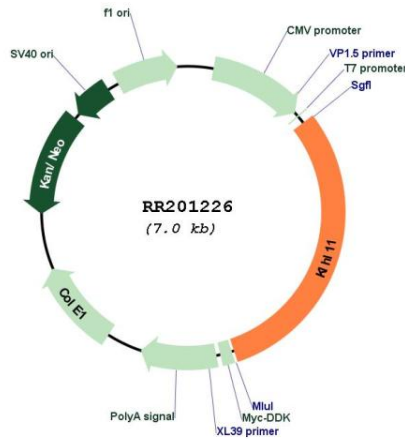
RefSeq ORF: 2130 bp

Locus ID: 287706

Cytogenetics: 10q31

MW: 80.4 kDa

Product images:



Circular map for RR201226