

## Product datasheet for **RR201223**

### **Nck1 (NM\_001106851) Rat Tagged ORF Clone**

#### Product data:

**Product Type:** Expression Plasmids  
**Product Name:** Nck1 (NM\_001106851) Rat Tagged ORF Clone  
**Tag:** Myc-DDK  
**Symbol:** Nck1  
**Vector:** pCMV6-Entry (PS100001)  
**E. coli Selection:** Kanamycin (25 ug/mL)  
**Cell Selection:** Neomycin  
**ORF Nucleotide Sequence:** >RR201223 representing NM\_001106851  
**Red=Cloning site Blue=ORF Green=Tags(s)**

TTTTGTAATACGACTCACTATAGGGCGGCCGGAATTCGTCGACTGGATCCGGTACCGAGGAGATCTGCC  
GCC**CGATCGCC**

ATGGCTGAAGAAGTGGTGGTGGCCAAATTTGATTATGTGGCACAGCAGGAACAAGAGCTGGATATCA  
AGAAGAATGAGAGATTATGGCTCCTGGATGACTCTAAGTCTGGTGGCGAGTTCGAAATTCATGAATAA  
AACAGGTTTTGTCCCTTCTAACTATGTGGAAAGAAAAAATAGTGCTCGGAAAGCATCTATTGTTAAAAAC  
CTGAAGGACACCTTAGGCATTGGAAAAGTAAAAAGAAAACCCAGTGTTCCAGATACGGCATCTCCTGCTG  
ATGATAGCTTTGTTGATCCAGGAGAACGCTCTATGACCTCAACATGCCTGCTTTTGTGAAGTTAACTA  
CATGGCTGAGAGAGAGGATGAATTGTCATTGATAAAAAGGACCAAGGTGATAGTCATGGAGAAATGCAGT  
GACGGATGGTGGCGTGGCAGCTACAATGGACAAAATTGGATGGTTCCTTCAAACATGTAACGAAGAAG  
GTGACAGTCCCTTTGGGTGACCATGTAGGTTCTCTGTGAGAGAAGTTAGCAGCAGTTGTCAATAACCTAAA  
TACAGGTCAGTATTGCACGTTGTACAGGCTCTTACCCGTTGAGCTCATCCAATGATGAAGAACTCAAT  
TTTGAGAAAGGTGATGTAATGGATGTTATTGAAAAGCCGAAAAATGACCCAGAATGGTGGAAATGCAGGA  
AAATCAATGGCATGGTTGGCCTGGTGC AAAA AACTATGTTACCGTCATGCAGAATAATCCGCTAACCTC  
AGGTTTGGAAACCATCGCCTCCACAGTGTGATTACATTAGGCCTTCACTCACGGGGAAGTTTGTGGCAAT  
CCTTGGTATTATGGCAAAGTCAACAGGCCACAGGAGATGGCATTGAATGAAAGAGGGCATGAAGGAG  
ACTTCTCATTCCGACAGTGTGCTTCCGCAAATGATTTCTCAGTATCACTAAAAGCACAAGGGAAAAA  
CAAGCATTTTAAAGTCCAGCTGAAAGAGACTGTCTACTGCATTGGGCAGCGGAAATTCAGCACCATTGGAG  
GAACTTGTAGAACATTACAAAAGGCACCGATCTTACAAGTGAACAAGGAGAGAAATTTGATCTCGTCA  
AGCATTGTCT

**ACGCGT**ACGCGGCCGCTCGAGCAGAACTCATCTCAGAAGAGGATCTGGCAGCAAATGATATCCTGGATT  
ACAAGGATGACGACGATAAGGTTTAA



[View online »](#)

**Protein Sequence:** >RR201223 representing NM\_001106851  
Red=Cloning site Green=Tags(s)

MAEEVVVAKFDYVAQQEQELDIIKKNERLWLLDDSKSWWRVNRNSMNGTGFVPSNYVERKNSARKASIVKN  
 LKDTLGIGKVKRKPSPVDTASPADDSFVDPGERLYDLNMPAFVKFNMAEREDLSLIKGTKVIVMEKCS  
 DGWWRGSYNGQIGWFPNSYVTEEGDSPLGDHVGSLSEKLAAVVNNLNTGQVLHVQALYFSSSNDDELN  
 FEKGDVMDVIEKPENDPEWVKCRKINGMVLVPKNYVTVMQNNPLTSGLEPSPQCDYIRPSLTGKFAGN  
 PWYYGKVTRHQAEMALNERGHEGDFLIRDSESSPNDFSVSLKAQGNKHKFKVQLKETVYICIGQRKFSME  
 ELVEHYKKAPIFTSEQGEKLYLVKHL

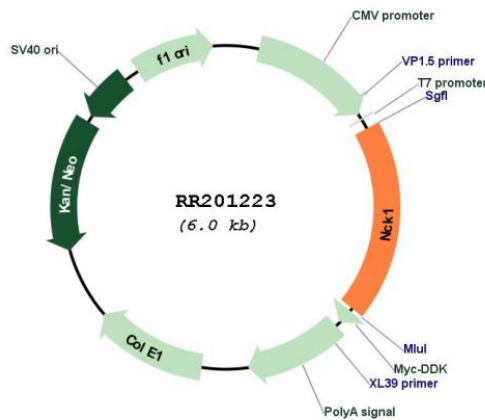
TRTRPLEQKLISEEDLAANDILDYKDDDDKV

**Restriction Sites:** SgfI-MluI

**Cloning Scheme:**



**Plasmid Map:**



**ACCN:** NM\_001106851

<b>ORF Size:</b>	1131 bp
<b>OTI Disclaimer:</b>	The molecular sequence of this clone aligns with the gene accession number as a point of reference only. However, individual transcript sequences of the same gene can differ through naturally occurring variations (e.g. polymorphisms), each with its own valid existence. This clone is substantially in agreement with the reference, but a complete review of all prevailing variants is recommended prior to use. <a href="#">More info</a>
<b>OTI Annotation:</b>	This clone was engineered to express the complete ORF with an expression tag. Expression varies depending on the nature of the gene.
<b>Components:</b>	The ORF clone is ion-exchange column purified and shipped in a 2D barcoded Matrix tube containing 10ug of transfection-ready, dried plasmid DNA (reconstitute with 100 ul of water).
<b>Reconstitution Method:</b>	<ol style="list-style-type: none"><li>1. Centrifuge at 5,000xg for 5min.</li><li>2. Carefully open the tube and add 100ul of sterile water to dissolve the DNA.</li><li>3. Close the tube and incubate for 10 minutes at room temperature.</li><li>4. Briefly vortex the tube and then do a quick spin (less than 5000xg) to concentrate the liquid at the bottom.</li><li>5. Store the suspended plasmid at -20°C. The DNA is stable for at least one year from date of shipping when stored at -20°C.</li></ol>
<b>RefSeq:</b>	<a href="#">NM_001106851.2</a> , <a href="#">NP_001100321.1</a>
<b>RefSeq Size:</b>	1778 bp
<b>RefSeq ORF:</b>	1134 bp
<b>Locus ID:</b>	300955
<b>Cytogenetics:</b>	8q31
<b>MW:</b>	42.9 kDa