

## Product datasheet for **RR201168**

### RT1-M6-1 (NM\_001008852) Rat Tagged ORF Clone

#### Product data:

Product Type:	Expression Plasmids
Product Name:	RT1-M6-1 (NM_001008852) Rat Tagged ORF Clone
Tag:	Myc-DDK
Symbol:	RT1-M6-1
Synonyms:	RT1-M6
Vector:	pCMV6-Entry (PS100001)
E. coli Selection:	Kanamycin (25 ug/mL)
Cell Selection:	Neomycin
ORF Nucleotide Sequence:	>RR201168 representing NM_001008852 Red=Cloning site Blue=ORF Green=Tags(s)

TTTTGTAATACGACTCACTATAGGGCGCCGGAATTCGTCGACTGGATCCGGTACCGAGGAGATCTGCC  
GCC**CGATCGCC**

ATGGGGCTCCAGTGCATGCTACCCTACTGCTGCTCTCAGCCTTCTGGCTCTGACCCAAACCAAGA  
ACCAGAGTTTTGCTGGTTCACACTTCATGCAGTATTTGGTAACCACCACCTCGTCTCAACCCGGTCTTCA  
AGATTCGCATGTCTGCATTGTTGGCCATGTGGACTACATGCCATTTATGCGCTTTGACAGTGATGGAGCT  
GCTCAGAGGATCCAGACGAGAGGGCCTTGATGAAGCAGATGGGGCTGAGTATTTGAAATGGAGAGAA  
AGAATGCGGAGGGGATTCACACAGGGCTCGAGAAAACCTGCGATTTCGCAATCCAAGTCTATAACCAGAG  
CGATAAAGCGCACTATAGCCATGCTTTTACGGCCAACATTACATCAGCCTGAACTCGGACCTGACAACA  
TGGAGTGTGGGAGACAGCACAGCTCAGATCACCAAGCGACGGTGGGAGGCAGATGGTGTAGCAGAGGCC  
TGAGTCACTTCTTGAAAGTCTCTTGTGTTGAACACCTGCAGAAGCACTTGGAGACAGGGAAGGAGACTCT  
ACAGCGCTCAGATCCCCAAAGGCACATGTGACCCTTACCCCAGACCTGAAGGTGATGTCACCCCTGAGG  
TGCTGGGCCCTGGGCTTCTACCTGCTGACATCACCTGACCTGGCAGTTGAATGGGAGGACCTGACCC  
AGGACATGGAGCTTGTGGAGACCAGGCCCTGCAGGGGATGGAACCTCCAGAAGTGGGCATCTGTGGTGGT  
GCCTAATGGGGAGGAGCAGAAGTACACATGCCTTGTGGAGCATGAGGGGCTGCCTGAGCCCTCACACTG  
AGATGAAACCAGCAACTTGGCCTGTGGTTGGAATAACTGTTGGTGTAGTTCTCCTTGGGTTTGTATCA  
TTGGAGCTCTGATTGCCATTGTGACCATGAGGAAGAAGAGAGCAGACCCTGTGGATCCTGTGGACCTTAT  
GGATCCAGTG

**ACGCGT**ACGCGGCCGCTCGAGCAGAAACTCATCTCAGAAGAGGATCTGGCAGCAATGATATCCTGGATT  
ACAAGGATGACGACGATAAGGTTTAA



[View online >](#)

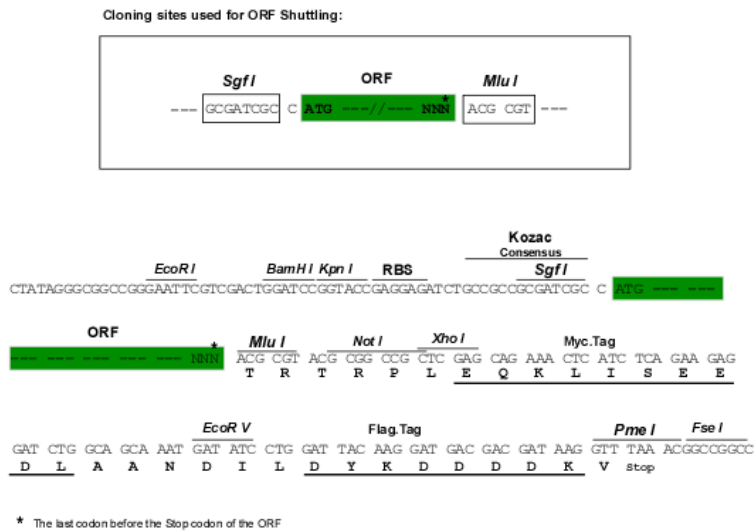
**Protein Sequence:** >RR201168 representing NM\_001008852  
Red=Cloning site Green=Tags(s)

MGAPVLHATLLLLSAFLALTQTKNQSFAGSHFMQYLVTSSSQPLQDSHVCIVGHVDYMPFMRFDSDGA  
 AQRITRGPWMKQMGPEYLEMERKNAEGYSHRARENLRFAIQVYNQSDKAHYSHAFDGGHYISLNSDLTT  
 WSVGDESTAQITKRRWEADGVAEALSHFLKVSCEVHLQKHLETGKETLQRSPPKAHVTLHPRPEGDVTLR  
 CWALGFYPADITLTWQLNGEDLTQDMELVETRPAGDGTQKQWASVVVVPNGEEQKYTCLVEHEGLPEPLTL  
 RWKPATWPPVVGITVGVLLGFVIIGALIAIVTMRKKRADPVPVLDLMDPV

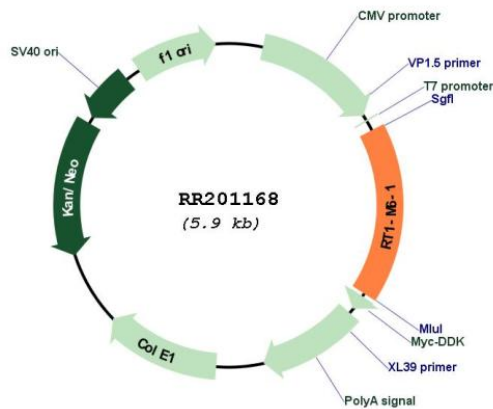
TRTRPLEQKLISEEDLAANDILDYKDDDDKV

**Restriction Sites:** SgfI-MluI

**Cloning Scheme:**



**Plasmid Map:**



**ACCN:** NM\_001008852

**ORF Size:** 990 bp

<b>OTI Disclaimer:</b>	The molecular sequence of this clone aligns with the gene accession number as a point of reference only. However, individual transcript sequences of the same gene can differ through naturally occurring variations (e.g. polymorphisms), each with its own valid existence. This clone is substantially in agreement with the reference, but a complete review of all prevailing variants is recommended prior to use. <a href="#">More info</a>
<b>OTI Annotation:</b>	This clone was engineered to express the complete ORF with an expression tag. Expression varies depending on the nature of the gene.
<b>Components:</b>	The ORF clone is ion-exchange column purified and shipped in a 2D barcoded Matrix tube containing 10ug of transfection-ready, dried plasmid DNA (reconstitute with 100 ul of water).
<b>Reconstitution Method:</b>	<ol style="list-style-type: none"><li>1. Centrifuge at 5,000xg for 5min.</li><li>2. Carefully open the tube and add 100ul of sterile water to dissolve the DNA.</li><li>3. Close the tube and incubate for 10 minutes at room temperature.</li><li>4. Briefly vortex the tube and then do a quick spin (less than 5000xg) to concentrate the liquid at the bottom.</li><li>5. Store the suspended plasmid at -20°C. The DNA is stable for at least one year from date of shipping when stored at -20°C.</li></ol>
<b>RefSeq:</b>	<a href="#">NM_001008852.1</a> , <a href="#">NP_001008852.1</a>
<b>RefSeq Size:</b>	993 bp
<b>RefSeq ORF:</b>	993 bp
<b>Locus ID:</b>	414785
<b>Cytogenetics:</b>	20p12
<b>MW:</b>	37 kDa