

Product datasheet for **RR201162**

Gpr87 (NM_001107677) Rat Tagged ORF Clone

Product data:

Product Type:	Expression Plasmids
Product Name:	Gpr87 (NM_001107677) Rat Tagged ORF Clone
Tag:	Myc-DDK
Symbol:	Gpr87
Vector:	pCMV6-Entry (PS100001)
E. coli Selection:	Kanamycin (25 ug/mL)
Cell Selection:	Neomycin
ORF Nucleotide Sequence:	>RR201162 representing NM_001107677 Red=Cloning site Blue=ORF Green=Tags(s)

TTTTGTAATACGACTCACTATAGGGCGGCCGGAATTCGTCGACTGGATCCGGTACCGAGGAGATCTGCC
GCC**GCGATCGCC**

ATGAATGTCTCTCCTTTTTCAGGTAATGAATTATACAGCCAAGCAAGTCACACTGCAAACAGCAGCATCG
AGGGACATGGGAAGAAGTCCACCCATCACAACGAGTTTGACACCATCATCCTGCCGGTGCTTTACCTAGT
TATATTTGTGGCAAGCATCTGCTGAACGGTCTGGCTGTGTGGATCTTCTCCACATTCCGAATAAAACC
AGCTTCATATTTTATCTCAAAAATATAGTAGTAGCTGACCTCATAATGACCCTGACATTCGGTTCCGAA
TAGTCCGTGACGCAGGATTCGGACCTTGGTACTTTGAGTTTATCCTCTGCAGATACACCTCGTTTTGT
CTATGCAAACATGTATACATCCATTGTGTTTCTTGGGCTGATCAGTGTTGATCGCTATCTGAAGGTGGTA
AAGCCTTTGGTGACTCTCGCATGTATAGCATAACCTCACCAAAGTCTTATCGATTTGTGTCTGGGTGA
TCATGGCTGTTCTGTCTTGCCAAACATCATACTGACTAACGGTCAACCAACTAAGGAAAACATTCATGA
CTGCATGAAGCTTAAAAGTCCGTTGGGAGCCAAGTGGGATATGGCTGTACCTACGTGGACAGCTGTCTG
TTTGTCTGCTGTGCTGGTATTCTGATTGGATGCTACATAGCCATCTCCAGATACATCCACAAATCCAGCA
GGCAATTCATAAGTCAATCGAGCCGGAAGCGGAAGCATAACCAGAGCATCCGCGTGGTCTGGCTGTGTT
TTTTACCTGCTTCTCCGTATCACTTGTGAGAATCCCTTCACTTTCACTTAGACAGGCTCCTA
GATGACTCAGCACAAAAATTCTCCACTACTGCAAGGAAATGACACTTTTCTTGTCTGCGTGCAACGTGT
GCCTGGATCCGATAATTTATTTTTTTCATGTGTAAGTCATTTTCAAGAAGTTATTCAAGAAATCAACAT
AAGAACCAGGAGTAAAAGCATCAGGTGCTGCAAAGCGTCCGAAGATCAGAAGTGCATCTACTATGAC
TACACCGATGTG

ACGCGTACGCGGCCGCTCGAGCAGAACTCATCTCAGAAGAGGATCTGGCAGCAAATGATATCCTGGATT
ACAAGGATGACGACGATAAGGTTTAA



[View online »](#)

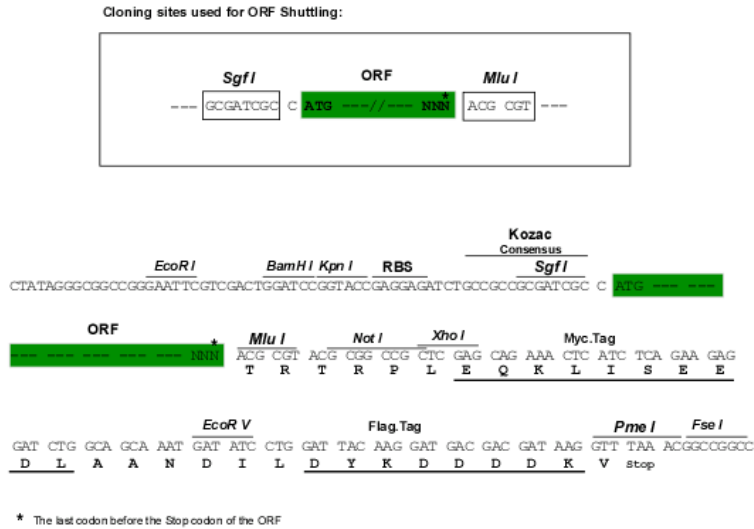
Protein Sequence: >RR201162 representing NM_001107677
 Red=Cloning site Green=Tags(s)

MNVSPFSGNELYSQASHTANSTIEGHGKNSTHHNEFDTIILPVLVYVIFVASILLNGLAVWIFFHIRNKT
 SFIFYLKNIVVADLIMTLTFPFRIVRDAGFGPWYFEFILCRYTSVLFYANMYTSIVFLGLISVDRYLKVV
 KPFGDSRMYSITFTKVL SICVWVIMAVLSLPNIILTNGOPTKENIHDCMKLKSPLGAKWDMAVTYVDSCL
 FVAVLVILIGCYIAISRYIHKSSRQFISQSSRKRKHNSIRVVAVVFFTCFLPYHLCRIPFFTFSHLDRLL
 DDSAHKILHYCKEMTLFLSACNVCLDPIIYFFMCKSF SRRLFKKSNIRTRSEISIRSLQSVRRSEVRIYYD
 YTDV

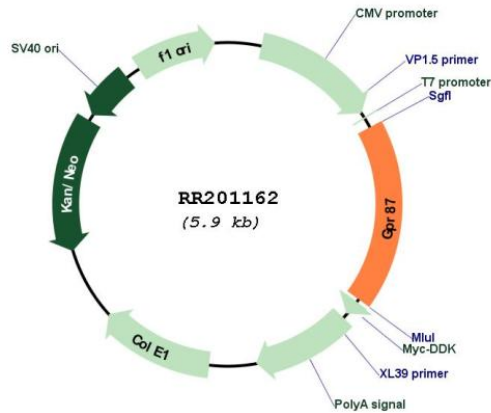
TRTRPLEQKLISEEDLAANDILDYKDDDDKV

Restriction Sites: SgfI-MluI

Cloning Scheme:



Plasmid Map:



ACCN: NM_001107677

ORF Size:	1062 bp
OTI Disclaimer:	The molecular sequence of this clone aligns with the gene accession number as a point of reference only. However, individual transcript sequences of the same gene can differ through naturally occurring variations (e.g. polymorphisms), each with its own valid existence. This clone is substantially in agreement with the reference, but a complete review of all prevailing variants is recommended prior to use. More info
OTI Annotation:	This clone was engineered to express the complete ORF with an expression tag. Expression varies depending on the nature of the gene.
Components:	The ORF clone is ion-exchange column purified and shipped in a 2D barcoded Matrix tube containing 10ug of transfection-ready, dried plasmid DNA (reconstitute with 100 ul of water).
Reconstitution Method:	<ol style="list-style-type: none">1. Centrifuge at 5,000xg for 5min.2. Carefully open the tube and add 100ul of sterile water to dissolve the DNA.3. Close the tube and incubate for 10 minutes at room temperature.4. Briefly vortex the tube and then do a quick spin (less than 5000xg) to concentrate the liquid at the bottom.5. Store the suspended plasmid at -20°C. The DNA is stable for at least one year from date of shipping when stored at -20°C.
RefSeq:	NM_001107677.1 , NP_001101147.1
RefSeq Size:	1161 bp
RefSeq ORF:	1065 bp
Locus ID:	310443
Cytogenetics:	2q26
MW:	41 kDa