

Product datasheet for **RR201161**

En2 (NM_001109214) Rat Tagged ORF Clone

Product data:

Product Type: Expression Plasmids
Product Name: En2 (NM_001109214) Rat Tagged ORF Clone
Tag: Myc-DDK
Symbol: En2
Synonyms: RGD1561842
Vector: pCMV6-Entry (PS100001)
E. coli Selection: Kanamycin (25 ug/mL)
Cell Selection: Neomycin
ORF Nucleotide Sequence: >RR201161 representing NM_001109214
Red=Cloning site Blue=ORF Green=Tags(s)

TTTTGTAATACGACTCACTATAGGGCGCCGGAATTCGTCGACTGGATCCGGTACCGAGGAGATCTGCC
GCC**CGGATCGCC**

ATGGAGGAGAAGGATTCCAAGTCCAGCGAGACGGCGCGGAGGCCGAGCGGCAGCCGAACCCAGCCCCG
GCGGCGGCTCCGGAGGCGGCAGCAGCCGAGCGACTCGGACACCGCCGCGCGTCTGATGTTGCC
CGCGGTCTGCAGGCGCCAGGCAACCACCAGCATCCGCATCGCATCACCAACTTCTTCATCGATAACATC
CTACGACCGGAGTTCGGCCGCCAAAGGATGCGGGGACTTGTGTGCCGCGCGGGCGGAGCCAGGGGAG
GCGAAGGCGGCGCTGGCAGTACGGAGGGAGGCGGCGCGCAGACGGAGCCGAGCAGATCCTGGGCGCCAG
GGAGTCCCAGCGAACCTGCGTGCGCACCCAGTGCAGGAGGGCCGCTCTCCGGTGCCTCCGGCGACCT
GCGGCCGATGGAGAAGGCGGCTCCAAGACGCTGTGCTGCACGGTGGTGCTAAAAACCCGGAGACCCGG
GGGTTTCCTTGGATGGAGCGCTCAAGGCCCGGGCTTGGCGGAGGTGACCTGTCCGGTGGACTCCGACTC
GGACAGCTCTCAAGCCAGCGCCACCCTGGGCGCGCAGCCCATGCTCTGGCCGGCTTGGGTCTACTGCACA
CGTTACTCTGACCGCCTTCTTCAGGCCCAAGTCTCGAAAACCAAGAAGAACAACCCGAACAAGAGG
ACAAGAGGCCCGCACCCGCTTCACTGCTGAGCAGCTGCAGAGGCTCAAAGCTGAGTTTCAGACCAACAG
GTACCTGACGGAGCAGAGGCGCCAAAGTCTTGCAGGAGCTCAGCCTCAACGAGTCCCAGATCAAGATC
TGGTTCCAGAACAAGCGGGCCAAAATCAAGAAAGCCACGGGAACAAGAACACTTTGGCGGTGCACCTCA
TGGCGCAGGGCCTGTACAACATTCCACCACCGCCAAGGAGGGCAAGTCGGACAGCGAG

ACGCGTACGCGGCCGCTCGAGCAGAACTCATCTCAGAAGAGGATCTGGCAGCAAATGATATCCTGGATT
ACAAGGATGACGACGATAAGGTTTAA



[View online »](#)

Protein Sequence: >RR201161 representing NM_001109214
 Red=Cloning site Green=Tags(s)

MEEKSKSSETAAEAQRQPEPSPGGGGGGSSPSSDTRRRRALMLPAVLQAPGNHQHPHRIITNFFIDNI
 LRPEFGRRKDAGTCCAGAGGARGGEGGAGSTEGGGADGAEQILGARESRPNPACAPSAGGPLSGASGDP
 AADGEGGSKTSLHGGAKKPGDPGGSLDGALKARGLGGDLVSSSDSSQASATLGAQPMWPWWYCT
 RYSDRPSSGPRSRKPKKKNPNKEDKRPRTAFTAELQRLKAEFQTNRYL TEQRRQSLAQELSLNESQIKI
 WFQNKRAKIKKATGNKNTLAVHMLMAQGLYNHSTTAKEGKSDSE

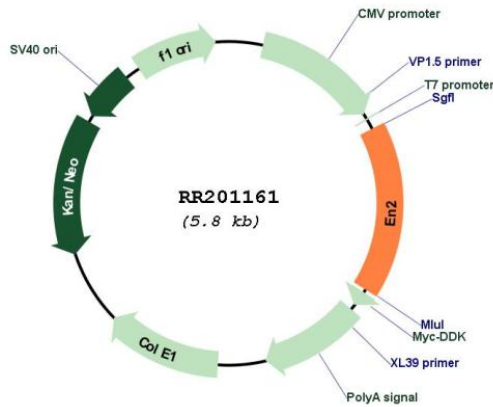
TRTRPLEQKLISEEDLAANDILDYKDDDDKV

Restriction Sites: SgfI-MluI

Cloning Scheme:



Plasmid Map:



ACCN: NM_001109214

ORF Size: 969 bp

OTI Disclaimer:	The molecular sequence of this clone aligns with the gene accession number as a point of reference only. However, individual transcript sequences of the same gene can differ through naturally occurring variations (e.g. polymorphisms), each with its own valid existence. This clone is substantially in agreement with the reference, but a complete review of all prevailing variants is recommended prior to use. More info
OTI Annotation:	This clone was engineered to express the complete ORF with an expression tag. Expression varies depending on the nature of the gene.
Components:	The ORF clone is ion-exchange column purified and shipped in a 2D barcoded Matrix tube containing 10ug of transfection-ready, dried plasmid DNA (reconstitute with 100 ul of water).
Reconstitution Method:	<ol style="list-style-type: none"> 1. Centrifuge at 5,000xg for 5min. 2. Carefully open the tube and add 100ul of sterile water to dissolve the DNA. 3. Close the tube and incubate for 10 minutes at room temperature. 4. Briefly vortex the tube and then do a quick spin (less than 5000xg) to concentrate the liquid at the bottom. 5. Store the suspended plasmid at -20°C. The DNA is stable for at least one year from date of shipping when stored at -20°C.
RefSeq:	NM_001109214.1 , NP_001102684.1
RefSeq Size:	2713 bp
RefSeq ORF:	972 bp
Locus ID:	499964
Cytogenetics:	4q11
MW:	33.7 kDa