

Product datasheet for **RR201159**

S100a3 (NM_053681) Rat Tagged ORF Clone

Product data:

Product Type: Expression Plasmids
Product Name: S100a3 (NM_053681) Rat Tagged ORF Clone
Tag: Myc-DDK
Symbol: S100a3
Vector: pCMV6-Entry (PS100001)
E. coli Selection: Kanamycin (25 ug/mL)
Cell Selection: Neomycin
ORF Nucleotide Sequence: >RR201159 representing NM_053681
Red=Cloning site Blue=ORF Green=Tags(s)

TTTTGTAATACGACTCACTATAGGGCGGCCGGAATTCGTCGACTGGATCCGGTACCGAGGAGATCTGCC
GCC**CGATCGCC**

ATGACCCGGCCCTGGAGCAGGCAGTAGCTGCCATCGTGTGTACCTTCCAGGAGTATGCAGGGCGCTGTG
GTGACAAATAACAAGATCTGCCAGTCGGAGCTCAAGGAGCTGTTGCAGAAGGAGCTGCCACCTGGACCCC
GAGTGAGTTCGGGAGTGACTACAATAAATTCATGAGTGTTCTGGATACTAACAAGGACTGCGAGGTG
GACTTTGGGGAGTACGTGCGCTCACTTGCAGCCTCTGTCTCTACTGCCAGGACTTCAAAGAGTGCC
CCCTGAGCCCCCTTGTCCTCCAG

ACGCGTACGCGGCCGCTCGAGCAGAACTCATCTCAGAAGAGGATCTGGCAGCAAATGATATCCTGGATT
ACAAGGATGACGACGATAAGGTTTAA

Protein Sequence: >RR201159 representing NM_053681
Red=Cloning site Green=Tags(s)

MTRPLEQAVAAIVCTFQEYAGRCGDYKIKQSELKELLQKELPTWTPSEFRECNDYKFMVSLDTNKDCEV
DFGEYVRSLSLCLYCHEYFKECPPEPPCPQ

TRTRPLEQ**KLISEEDLAANDILDYKDDDDK**V

Restriction Sites: Sgfl-MluI

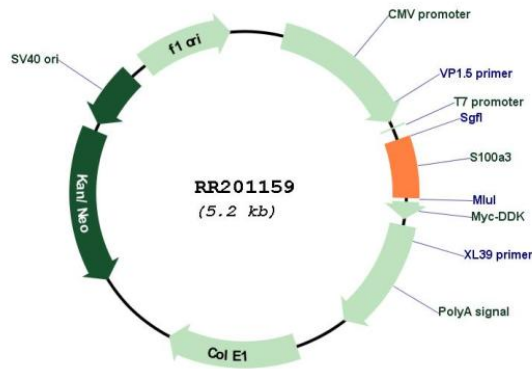


[View online »](#)

Cloning Scheme:



Plasmid Map:



ACCN: NM_053681
 ORF Size: 303 bp

OTI Disclaimer:	The molecular sequence of this clone aligns with the gene accession number as a point of reference only. However, individual transcript sequences of the same gene can differ through naturally occurring variations (e.g. polymorphisms), each with its own valid existence. This clone is substantially in agreement with the reference, but a complete review of all prevailing variants is recommended prior to use. More info
OTI Annotation:	This clone was engineered to express the complete ORF with an expression tag. Expression varies depending on the nature of the gene.
Components:	The ORF clone is ion-exchange column purified and shipped in a 2D barcoded Matrix tube containing 10ug of transfection-ready, dried plasmid DNA (reconstitute with 100 ul of water).
Reconstitution Method:	<ol style="list-style-type: none">1. Centrifuge at 5,000xg for 5min.2. Carefully open the tube and add 100ul of sterile water to dissolve the DNA.3. Close the tube and incubate for 10 minutes at room temperature.4. Briefly vortex the tube and then do a quick spin (less than 5000xg) to concentrate the liquid at the bottom.5. Store the suspended plasmid at -20°C. The DNA is stable for at least one year from date of shipping when stored at -20°C.
RefSeq:	NM_053681.1 , NP_446133.1
RefSeq Size:	669 bp
RefSeq ORF:	306 bp
Locus ID:	114216
UniProt ID:	P62819
Cytogenetics:	2q34
MW:	11.7 kDa
Gene Summary:	human homolog binds Zn ²⁺ with high affinity and also binds Ca ²⁺ [RGD, Feb 2006]