

Product datasheet for **RR201147**

Cebpd (NM_013154) Rat Tagged ORF Clone

Product data:

Product Type: Expression Plasmids
Product Name: Cebpd (NM_013154) Rat Tagged ORF Clone
Tag: Myc-DDK
Symbol: Cebpd
Synonyms: C/EBPd; CELF
Mammalian Cell Selection: Neomycin
Vector: pCMV6-Entry (PS100001)
E. coli Selection: Kanamycin (25 ug/mL)
ORF Nucleotide Sequence: >RR201147 representing NM_013154
Red=Cloning site Blue=ORF Green=Tags(s)

TTTTGTAATACGACTCACTATAGGGCGGCCGGAATTCGTCGACTGGATCCGGTACCGAGGAGATCTGCC
GCC**CGATCGCC**

ATGAGCGCCGCTCTTTTCAGCCTAGACAGCCCAGCACGCGGCGCACCCCTGGCCACAGAGCCCGCGGCT
TCTACGAGCCAGGCAGGGTGGGCAAGCCAGGACGAGGGCCGAGCCTGGGGATCTGGGGAGCCGGGCTC
CACGACCCTGCCATGTATGACGACGAGAGCGCCATCGACTTCAGCGCCTACATTGATTCATGGCTGCC
GTGCCACCCTAGAGTTGTGCCACGACGAGATCTTCGCCGACCTTTCAACAGCAATCACAAAGCGGCCG
GCGCGGGCAGCCTGGAGCTGCTGCAGGGCGGCCCTACGCGACCCCGGGTGTGGGTCAATCGCCAGGGG
CCCGCTGAAGCGGAACCCGACTGGGGGACGGCGACGCGCCGGGCTCCCTGCTGCCGGCGCAAGTGGCA
GTGTGCGCGCAGACAGTGGTGGCTTGGCGGCCGCGGCACAGCCACACCACCCACTTCGCCGAGCCTC
CTCGAGGCAGCCCTGGACCGAGCCTTGGCCTGGCCCCGTCCGAGAGAAGGGCGCCGCAAGAGGGGTCC
GGACCGGGGCAGCCCTGAGTACCGGCAGCGACGCGAGCGCAACAACATCGCTGTGCGCAAGAGCCGGGAC
AAGGCAAGCGCCGCAACCAGGAGATGCAGCAGAAGCTGGTGGAGCTGTCGGCCGAGAACGAGAAGCTGC
ATCAGCGTGTGGAGCAGCTACCCGGGACCTGGCCAGCCTCCGGCAGTTCTTCAAAGAGCTGCCAGCCC
GCCTTTCTGCCGCCACCGGCACCGACTGCCCG

ACGCGTACGCGGCCGCTCGAGCAGAAACTCATCTCAGAAGAGGATCTGGCAGCAAATGATATCCTGGATT
ACAAGGATGACGACGATAAGGTTTAA



Protein Sequence: >RR201147 representing NM_013154
Red=Cloning site Green=Tags(s)

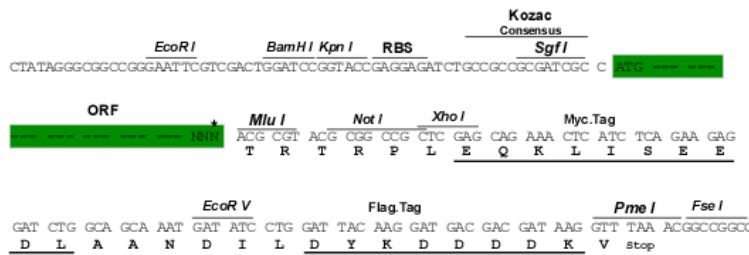
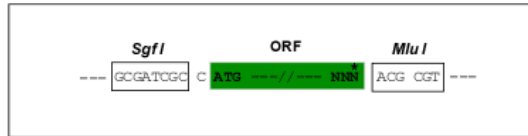
MSAALFSLDSPARGAPWPTEPAAFYEPGRVKGPKGRGPEPGDLGEPGSTTPAMYDDESAIDFSAYIDSMAA
 VPTLELCHDEIFADLFNSNHKAAGAGSLELLQGGPTRPPGVGSIARGPLKREPDWGDGAPGSLPAQVA
 VCAQTVVSLAAAAQPTPPTSPEPPRGSPPSLAPGPVREKAGKRGPDGSPPEYRQRRERNNIAVRKSRD
 KAKRRNQEMQQLVELSAENEKLHQRVEQLTRDLASLRQFFKELPSPFFLPPTGTDCR

TRTRPLEQKLISEEDLAANDILDYKDDDDKV

Restriction Sites: SgfI-MluI

Cloning Scheme:

Cloning sites used for ORF Shuttling:



* The last codon before the Stop codon of the ORF

ACCN: NM_013154

ORF Size: 804 bp

OTI Disclaimer: The molecular sequence of this clone aligns with the gene accession number as a point of reference only. However, individual transcript sequences of the same gene can differ through naturally occurring variations (e.g. polymorphisms), each with its own valid existence. This clone is substantially in agreement with the reference, but a complete review of all prevailing variants is recommended prior to use. [More info](#)

OTI Annotation: This clone was engineered to express the complete ORF with an expression tag. Expression varies depending on the nature of the gene.

Components: The ORF clone is ion-exchange column purified and shipped in a 2D barcoded Matrix tube containing 10ug of transfection-ready, dried plasmid DNA (reconstitute with 100 ul of water).

Reconstitution Method:

1. Centrifuge at 5,000xg for 5min.
2. Carefully open the tube and add 100ul of sterile water to dissolve the DNA.
3. Close the tube and incubate for 10 minutes at room temperature.
4. Briefly vortex the tube and then do a quick spin (less than 5000xg) to concentrate the liquid at the bottom.
5. Store the suspended plasmid at -20°C. The DNA is stable for at least one year from date of shipping when stored at -20°C.

RefSeq: [NM_013154.2](#), [NP_037286.1](#)

RefSeq Size: 1139 bp

RefSeq ORF: 807 bp

Locus ID: 25695

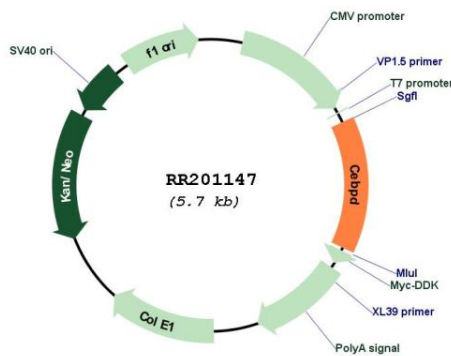
UniProt ID: [Q03484](#)

Cytogenetics: 11q23

MW: 28.6 kDa

Gene Summary: transcriptional activator; activity is stimulated by sepsis, keratinocyte growth factor, and may be involved in glucose-mediated regulation of iNOS [RGD, Feb 2006]

Product images:



Circular map for RR201147