

Product datasheet for **RR201120**

Sym (NM_001134858) Rat Tagged ORF Clone

Product data:

Product Type: Expression Plasmids
Product Name: Sym (NM_001134858) Rat Tagged ORF Clone
Tag: Myc-DDK
Symbol: Sym
Synonyms: Dmn
Vector: pCMV6-Entry (PS100001)
E. coli Selection: Kanamycin (25 ug/mL)
Cell Selection: Neomycin
ORF Nucleotide Sequence: >RR201120 representing NM_001134858
 Red=Cloning site Blue=ORF Green=Tags(s)

TTTTGTAATACGACTCACTATAGGGCGCCGGAATTCGTCGACTGGATCCGGTACCGAGGAGATCTGCC
 GCC**CGATCGCC**

ATGCTGTCCTGGCGGCTGCAGACCAGCTCCGAAAAGCCGAGCTCCAGGAGCTCAATGCCCGGCTTTATG
 AGTACGTGTGCCGGTGCAGAGCTGGAGCGCGAGAACCTGCTGCTGGAGGAGGAGCTGCGCAGCCGGCT
 GAGCCGGGAGGACCGCTGGGCCAAGATCAAGCGCTCTACGCCGAGGAGGCGCGCAGCTTGCACAGCAG
 CTCGACGAACTGAGCTGGTCCACGGCGCTGGCCGAGGGCGAGCGCGACCGCTGCCGAGGGAACCTGCTGG
 ACCTGCAGCGGGAAGTTTGAAGCCAGCACTGCCCGCGCCGCCCTGGATGCCGAGCTAGAAAGCGCAGCG
 GCGGGAGCTGGAGGAGGCGCTGGGCGCGCGCCGCCCTCGAGGCGCTGCTGGGCGGCTGGAGGCAGAG
 CGACGAGACCTGGATGCCGCCACGAGCGCCAAGTGCAGAGCTACGCGCCCGTGCACGACGCTCACCA
 TGCACTCCGAGCCCGCCACCGGCCCGCCCGCCCGCCCGCGCCTGCCGGACGTGCACGACAGCTA
 CGCCCTGCTAGTGGCCGAGTCGTGGAGGGAGAGCATGCAGCTGTACGAGGACGAGGTGCCGAGCTGGAG
 CAGGCGCTGCCCGCGGTCAAGAGAGCCGGCTCCAGGCGGAGGACGAGGCGCGGCTGTGCCGACAGGAG
 CGGACGCGCTGCCGAACCAGGCGCTGGAGTTGGAGCAGCTGCGTGCGAGGCTGGAGGATGAGCTGCTTCG
 GATGCGCGAGGAGTACGGGATGCAGGCGGAGGAGCGGCAGAGAGTGCACAGCCTGGAGGATGAGAAG
 GATGCCCTTACCTTGGCCATGGCTGACAGGCTGCGGGAGTACCAGGAGCTCCTACAGGTGAAGACGGGCC
 TCAGCTTGGAGGTAGCTACCTACAGGCGCTTGTGGAAGGAGAAAAGCAATCCGGAGATATTGATCTGGAC
 CGAGAACATTGAAAACGTGCCACGAGAGTCCAGAAAACACATCCTATCGCTATACCGACTCAGTATTACAG
 AGGAAGAATGAGAAGAATCTCTTCCAAGGCGAAAAACACCTTGGGCAGCTGTAATCACAGCTCGACTT
 TGTATTCCAACGGGCCAGGGCACCTTGACTCACAGACAACCACAGCTGTTGAAAATGCTGCCGAAGGGG
 CTTCTGACCTCCTGCTATTCTTCTCAGCTACAACCTCACAGCAGAAGCCCTGGAGAAAACCTGTCAGC
 AGTCAAGCCAGTTAAGACCAGTCATACCAACCCATGGCTTTCTAAGAAACTGATGCTCAAGTAAAA
 CATTCTCCATGGACCCAAAGCTGAAGGATGGGGGACACCTCACACGCGGGCCACAGAGTCCGTTAT
 TACCAGAGAGTCATACAGAGGTACCAGGGCAACGTGGCGGCAGGTGCTGTGAACAGCACTCAGTCAAAT
 GAGAGGACTGTCACTTCTGGGAAAGAAATTAGAAACGCAGGCCACTAAGGAGCAAGAGAGGGACAGGTGAG



[View online »](#)

GGGTGGTCAAATTAAGCCAGAGGAGAAAAATGTTTGATTCTAAAGAGAAGGCTTCGGAGGAAAGAACT
GAGGTGGGAAGAGCTGACCAAGTTAGATGCAAGAGAGAGGGAAAGCCAGCATTTAAGGAACGAGGCCAAA
GGGAAGGAAACACTGACGGGGAGAAGTAGAAAAAGAAAGAGAAGTGCCCATCAGTCTAGAAGTATCTCGG
GCAGCAAATCAGAGGTGTCCACAATACACTTGCAGTTCATCCGGAAGGAAGGATTCTGCCAACAGTAGGGA
AAGAGAGGTAAAGACCAAGAGACAAAGTTCACCTTGGACGGCAAGGACACTGCTGGCTCTCTGCAGAGT
GACTCTACGACAGAGACCATAGCAGAAAAACATCGTCACCACCATCCTTAAGCAGTTTACCAGTCTCCAG
GTGCTGAAGAGAATGTCAGTTCTTTGCCAGACACAAAGGTACCTACCTGGACCGGAAAGAGTTTCTCTGG
TGACAGGAAAACCAAGACGGAAATCGTCATGGAGTCGAAGCTGACAGAAGACGTCGATGTTTCTGATGAA
GCTGGCCTGGACTACCTTCTAAGCAAGGATGTCAAGGAAGTAGGACTGAAAGGGAAGTCAACAGAGACAG
TGATTGGAGAGATGATCAACCTCGGTCTAAAAGGAAGGGAGGGGAGGCCAAAGTCGTAATGTGGAGAT
TGTGGAAGAGCCCATGAGCTACGTAGGTGGTGGGAAAGTAGAGTTTTCTACCCCTTCCAGGTGGAAGAA
GTCGATGATGTGTCTCCAGCCCCAAGGGTTCATTGAGGAAGAGGAGGGCGAAGGAGAAACCCACATGG
CATTCTCAATGCATCAACGTGAGAGGACCAACCAGCCCCAGGTGAACGTCCCTCATGTGGAAGAAGTGAC
GGAGGCGGGGACTCGGAGGGGGAGCAGAGTTATTTCTGTCTACCCAGATGATACCTGGGGGACAT
GACAGAGAAGATGATGGCTCTGTGTATGGGCAGATCCACATTGAGGAAGAGTCCACCATCCGGTACTCAT
GGCAAGACGAGATTGCACAGGGGACTTGGAGAAGGAAAGCGAGAGGTGACACGGGGGAAGAGAAGCACAT
GAAGGTCTGGAGGTTCCATCGGCTTCCCTGGGTGGTGCCTTTGGATCTGCTCACGTGAAGGAAGAGCT
AGTGGTGAACCTCACGCTGAACCCACAATCATTGAGAAAGAGATCAAAATACCGCATGAATTCACACCT
CCATAAAGGGCGTCTTCTCCAGTGAGCCTCGGCATCAGTTGGTGGAGGTCAATGGGCAGCTGGAGGAAAC
GTTGCCTGAGCGCATGAAGGAAGAGCTGTCTGCCTGACCAGACAGAGTCAAGGAGAGCCAGGGAGTGTCT
TCAGTGGATGTAAGAAAGTCCAGAGCTGTCTGGCGTCTGTGACCTTAATGGCTGAGGTCAACCTCT
CGCAGACTGTAGATGCTGATCAGTTAGACCTGGAGGAGTTGAGCAGGGACGAAGCTGGGGAATAGAGAA
GGCTGTGGAGTCAGTGGTAAGAGAGAGCTTGACCAAGCGCTCCAGCCAGTGCCTAGAAGCCAGAGAGG
GAAGATGGAGAGGAGGCCCTGCGGTGGCTTTCTCTTCAAGCGTGGGCCACCAGGGAGCTGTATAGCC
CGTCTGGTGAGAAGGATGATACTGACCGGTCTTTCACAGCTCGGATCAGCGTGTACCCAGGGCCAGT
GTCAGCCACCGTGAAGTGAACGCCAACGGTTTTGTGAGTCTCATGTGCTGGAGGATGTAAGCCAG
TCTGTAAGGCACGTTAACTAGGCCCACTGAGATGTGGAGGACGGAACAGGTGCTCTACGGAGGCCCA
CCTCACCGGTGGTGGAGGTAAGTGAAGACTTCAGCGAGGCAGTCAAGTCCGAGGGAGCCAGCCGCTCCGT
GAGGCACGTTACTGGTCCCCGTCAAACCCAGTGTCCACAGAAGTCAATTTCCGAGGCTCTGTGCCT
ACCGGGCAGGAGACAGGACACAGGAGAGCCTGACCCTGCAGCACTGTCTGTGGAAGCTGACATCTCAG
GGAGTGGCAGGATGCCCGCTCTCAGCAGGCTCACAATGAAAAGGAAACTCCTTTCCGGGTCTATTTT
TGGGGCAGCCAGGTTGGTAGTAACTTTCAACTGAAGGGTCAAGTGGGTACCCAGACTTTTGTAGGCAT
CTCCAGTTAGGCTCCAGAGAAGGGTTCAGAGAAGAAATCCAGTTCATAGCTCCCATCCAGACAGGGCAG
AGTGGGGAGAAGAGGATTCTGGGTACACCAGAGTGTCTCTAGGGAGGAGCACCTCCATCCAGCACATTGA
CATCGTGCTCAGAGGTACCAGGCTTCCAAGCAGGTGGCCCCACAGACATTGGGATTTAGGGACTCAGAA
GGCGTAGTCTGGTGGAGAGGTGAGCAGGTATGACCCAGGCCACTCACAATTTCACTCAGATAGAGAAA
TCCTCAAGAAGGAAGAGAACACATTCCAGAGGGTCAATTTCTGGTCCCCTCCAGACAGTGTGGGCGACAC
AGGAGCAGAGGTGACAGAAAACATCAGCAGATCCTTCAGGCACATTCAAATAGGTCTACAGAGGAGGAC
CCCTCTGAATACATTGTCACCAGTGGACCCTTGCTAAAACATTTGTTCTTGACAGTCCCGTGGCATCCC
CTGGGCCGGGTGGGGGAGCAGACGGCAGTAGCACACCATGTACATTGCACTGGGGCCAAAGAAACTTC
ATTTACCTTTTCTAGATGGGTGTAAGTGAACGAGAGCCATCCGCACTGGACCCGAGACACAGGGTCAAG
GTGGAAGCTCACAGTGTGTCTACCACGGTGGCTGGAGAGTTGCTCACAGTAGGGATGAGCAATCAGCCA
GCACCAGCTCTCAGGCTCTGCTGGGATGCACACCAGGCCCGTGGAGAGAAAGGCAGGAGCAGGCTGG
ATTTGACAAGACGGTGCAGCTGCAAGAATGGTAGACAAAGGTCTGTGGCTTCTAGATGAGAAGAAAGTG
GCCCTTCTATCTAGACAATGAGGAGGAAGAGGAGGGCGAGGGATGTTTT

ACCGGTACGGGCCGCTCGAGCAGAACTCATCTCAGAAGAGGATCTGGCAGCAATGATATCCTGGATT
ACAAGGATGACGACGATAAGGTTTAA

Protein Sequence: >RR201120 representing NM_001134858
 Red=Cloning site Green=Tags(s)

MLSWRLQTSSEKAEQLNARLYEYVCRVRELERENLLLEELRSRLSREDRWAEDQALYAEARSRLRQQ
 LDELSWSTALAEGERDALRRELLDLQREGLEASTARGRLDAELEAQRRELEALGARAALALLGRLEAE
 RRDLDAAHERQVRELRARASSLTMHFRARATGPAAPPRLRDVHDSYALLVAESWRESMQLYEDEVRELE
 QALRRQESRLQAEDEARLCAQEADALRNQALELEQLRARLEDELLRMREEYGMQAEERQRVIDSLEDEK
 DALTLAMADRLREYQELLQVKTLGLSLEVATYRALLEGESNPEILIWNTENIENVPRESRNTSYRYTDSVLQ
 RKNEKNLFP RRKTPWAAVNHSSTLYSNGPGHLDSTTTAVGNAARRGFLTSCYSSSATTSSQKPLEKTVS
 SQASLRPVIPTHGFLRNTDAQVKTF SHGPKAEGMGDTL TRRATESVITRESYRGHQGNVAAGAVNSTQSN
 ERTVILGKKLETQATKEQERDRSGVVKLKPEEKMFDSKEKASEERNLRWEELTKLDARERESQHLRNEAK
 GKETLTGRSRKEREVPISEVSRGSKSEVSTIHLQSSGRKDSANSREREVKTETKTFHLDGKDTAGLSQS
 DSTTETIAENIVTTILKQFTQSPGAENVSSLPDTKVTYLDRKEFGDRKTKTEIVMESKLTEDVDVSD
 AGLDYLLSKDVKEVGLK GKSTETVIGEMINLGLKGREGRAKVVNVEIVEEPMSSYVGGKVEFSTPFQVEE
 VDDVSPSPKGFIEEEEGEGETHMAFSMHQRQRTNQPVNVPVVEEVEAGDSEGEQSYFVSTPDEYVGGH
 DREDDGSVYGGIHIIEESTIRYSWQDEIAQGTWRRKARGDTGEEKHMKVLEVPSASLGGAFGSAHVKEEA
 SGELHAETPIIEKEIKIPHEFHTSIKGVFSSEPRHQLVEVIGQLEETLPERMKEEL SALTRQSQGEPSV
 SVDVKKVQSSAGGSVTLMAEVNLSQTVADQLDLEELSRDEAGEIEKAVESVVRESLTKRSPVPRSPDR
 EDGEEAPAGGF LFKRWATRELYSPSGEKDDTRVHSSDQRTVQGPVSATVEVTSPTGFVQSHVLEDVVSQ
 SVRHVKLGPTMEMWRTEQVSYGGPTSPVVEVSEDFSEAVSSEGASRSVRHVTLGPRQNRVSTEVI FRGSVP
 TGQETGDTGEPDPAAL SVEADISGSGRMPGSQQAHNKE TPFPGPISGAAQVGSNFSTEGSVGTQTFVRH
 LQLGSREGFREEIQFIAPIDRAEWGEEDSGYTRVSLGRSTSIQHIDIVPQRYQASKQVAPQTLGFRDSE
 GVV LVERSAGMTQATHNFTSDREILKKEENTFQRVISGSPD SVGDTGAEVTENISRSFRHIQIGPTEED
 PSEYIVTSGPLSKTFVL DSSVASPGPGGGADGSSTPCHIALGPKETSFTFQMGVSDTRAIRSWTRDTGSE
 VEAHSVSHHGGWRVAHSRDEQSASTSSQASAGDAHQARGEKGTEQAGFDKTVQLQRMVDQRSVASDEKKV
 ALLYLDNEEEEEEGEWF

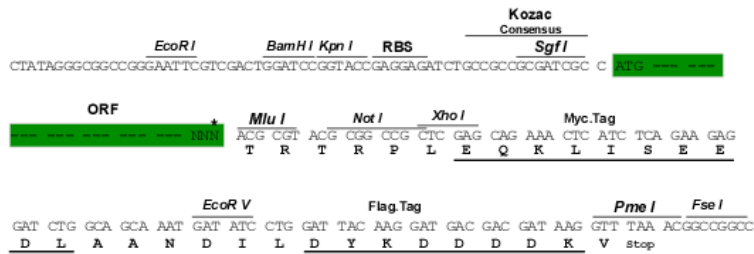
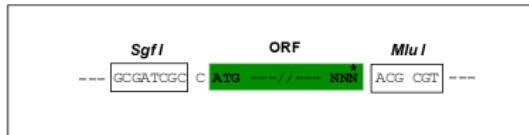
TRTRPLEQKLISEEDLAANDILDYKDDDDKV

Restriction Sites:

SgfI-MluI

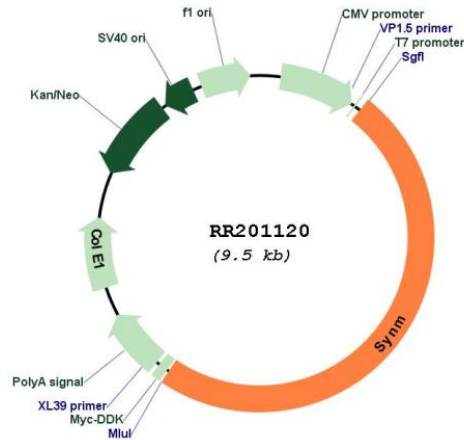
Cloning Scheme:

Cloning sites used for ORF Shuttling:



* The last codon before the Stop codon of the ORF

Plasmid Map:



ACCN: NM_001134858

ORF Size: 4671 bp

OTI Disclaimer: The molecular sequence of this clone aligns with the gene accession number as a point of reference only. However, individual transcript sequences of the same gene can differ through naturally occurring variations (e.g. polymorphisms), each with its own valid existence. This clone is substantially in agreement with the reference, but a complete review of all prevailing variants is recommended prior to use. [More info](#)

OTI Annotation: This clone was engineered to express the complete ORF with an expression tag. Expression varies depending on the nature of the gene.

Components: The ORF clone is ion-exchange column purified and shipped in a 2D barcoded Matrix tube containing 10ug of transfection-ready, dried plasmid DNA (reconstitute with 100 ul of water).

Reconstitution Method:

1. Centrifuge at 5,000xg for 5min.
2. Carefully open the tube and add 100ul of sterile water to dissolve the DNA.
3. Close the tube and incubate for 10 minutes at room temperature.
4. Briefly vortex the tube and then do a quick spin (less than 5000xg) to concentrate the liquid at the bottom.
5. Store the suspended plasmid at -20°C. The DNA is stable for at least one year from date of shipping when stored at -20°C.

RefSeq: [NM_001134858.3](#), [NP_001128330.1](#)
RefSeq Size: 7432 bp
RefSeq ORF: 4674 bp
Locus ID: 308709
Cytogenetics: 1q22
MW: 172.9 kDa
Gene Summary: human homolog is an intermediate filament protein; involved in connecting desmin the extracellular matrix [RGD, Feb 2006]