

Product datasheet for **RR201109**

Vps37d (NM_001128193) Rat Tagged ORF Clone

Product data:

Product Type: Expression Plasmids
Product Name: Vps37d (NM_001128193) Rat Tagged ORF Clone
Tag: Myc-DDK
Symbol: Vps37d
Synonyms: MGC188182; Vps37d
Mammalian Cell Selection: Neomycin
Vector: pCMV6-Entry (PS100001)
E. coli Selection: Kanamycin (25 ug/mL)
ORF Nucleotide Sequence: >RR201109 representing NM_001128193
Red=Cloning site Blue=ORF Green=Tags(s)

TTTTGTAATACGACTCACTATAGGGCGGCCGGGAATTCGTCGACTGGATCCGGTACCGAGGAGATCTGCC
GCCCGCATCGCC

ATGTACCGGGCCCGGGCGCGGGCGGGGCGGGAGCCCGGCAGCCCGGGCGCTTTGGGATCCTCAGCA
 CCGGGCAGCTCCGGGATCTGCTTCAAGATGAGCCAAGCTGGACCGGATCGTGCGGCTCAGCAGGAAGTT
 CCAGGGTCTGCAGCTGGAGCGGGATGCGTGCTTGGCCTCTAACTACGCGCTGGCCAAGGAGAACCTGGCC
 TTGCGTCTCGCCTGGAGATGGCCGGACAGCCCTGGCCATCAAGTACCAAGAGCTTCGAGAGGTGGCCG
 AGAACTGCGCAGACAAGCTGCAGAGACTGGAGAAGAGCATGCATCGCTGGAGCCCAATGTGCGCTGGG
 CTGGCTGCAGGCTGAGCTGGAGGAGGCTGAGCAGGAGGCTGAGGTCCAGATGGAGCAGCTGCTGCTGGGG
 GAACAGAGTCTGGAGGCCTTCTGCCAGCCTTCCAGAGGGGCGTGCCTGGCCACCTGAGGCGGACAC
 AGGCAGAGAACTACAGGAAGTCTGAGGCGTCGAGAGCGCTCTGCCAGCCGGCCCCACCCTGCTGC
 TGCAGTCTGCTGCCGCCACCGCATGGATCCCCCAAACCTTCCCTGCTGCTGCCGTCTGCCACT
 GGGGCCGCCCGGGGACCCTCCAGCAGTACCCCGGAGCCTGCCCCCTTGGACTCCCGCCAGTGCCCC
 CAGTGAAGGGTCCCGGGTGCCTTTTGGCCAGCCCTTTGCTGAGCCCTCGACCCTCTCAACCTGA
 ACCCCCTCATCGG

ACGCGTACGCGGCCGCTCGAGCAGAACTCATCTCAGAAGAGGATCTGGCAGCAAATGATATCCTGGATT
 ACAAGGATGACGACGATAAGGTTTAA



[View online »](#)

Protein Sequence: >RR201109 representing NM_001128193
Red=Cloning site Green=Tags(s)

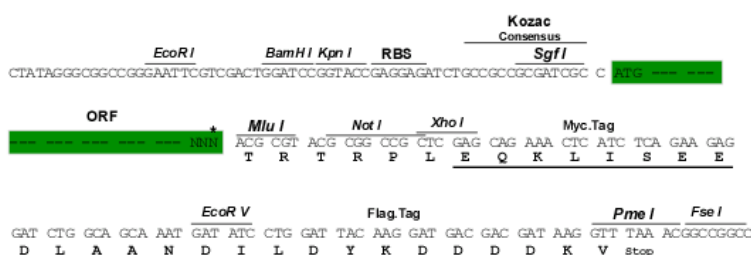
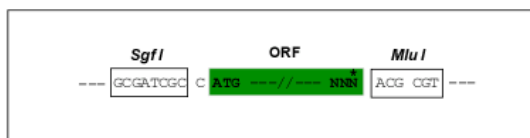
MYRARAARAGPEPGSPGRFGILSTGQLRDLLQDEPKLDRIVRLSRKFQGLQLERDACLASNYALAKENLA
 LRPRLEMGRALAIKYQELREVAENCADKLQRLEKSMHRWSPQCALGWLQAELEEAEQAEVQMEQLLLG
 EQSLEAFQPAFQGRALAHLRRTQAEKLQEVLRRRERSAQPAPTTAAAAAAAATAMDPPKPFPAAAVLP
 GAARGPPPAVPRSLPPLDSRPVPPVKGSPGCPFGPAPLLSPRPSQPEPPHR

TRTRPLEQKLISEEDLAANDILDYKDDDDKV

Restriction Sites: SgfI-MluI

Cloning Scheme:

Cloning sites used for ORF Shuttling:



* The last codon before the Stop codon of the ORF

ACCN: NM_001128193

ORF Size: 783 bp

OTI Disclaimer: The molecular sequence of this clone aligns with the gene accession number as a point of reference only. However, individual transcript sequences of the same gene can differ through naturally occurring variations (e.g. polymorphisms), each with its own valid existence. This clone is substantially in agreement with the reference, but a complete review of all prevailing variants is recommended prior to use. [More info](#)

OTI Annotation: This clone was engineered to express the complete ORF with an expression tag. Expression varies depending on the nature of the gene.

Components: The ORF clone is ion-exchange column purified and shipped in a 2D barcoded Matrix tube containing 10ug of transfection-ready, dried plasmid DNA (reconstitute with 100 ul of water).

Reconstitution Method:

1. Centrifuge at 5,000xg for 5min.
2. Carefully open the tube and add 100ul of sterile water to dissolve the DNA.
3. Close the tube and incubate for 10 minutes at room temperature.
4. Briefly vortex the tube and then do a quick spin (less than 5000xg) to concentrate the liquid at the bottom.
5. Store the suspended plasmid at -20°C. The DNA is stable for at least one year from date of shipping when stored at -20°C.

RefSeq: [NM_001128193.2](#), [NP_001121665.1](#)

RefSeq Size: 1560 bp

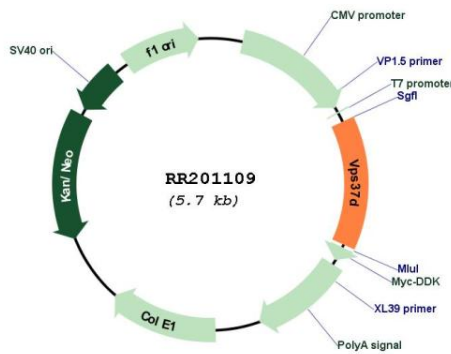
RefSeq ORF: 786 bp

Locus ID: 687208

Cytogenetics: 12q12

MW: 28.6 kDa

Product images:



Circular map for RR201109