

Product datasheet for RR201106

Kng1 (NM_001009628) Rat Tagged ORF Clone

Product data:

Product Type: Expression Plasmids
Product Name: Kng1 (NM_001009628) Rat Tagged ORF Clone
Tag: Myc-DDK
Symbol: Kng1
Synonyms: kininogen; Kng111
Vector: pCMV6-Entry (PS100001)
E. coli Selection: Kanamycin (25 ug/mL)
Cell Selection: Neomycin
ORF Nucleotide Sequence: >RR201106 representing NM_001009628
Red=Cloning site Blue=ORF Green=Tags(s)

TTTTGTAATACGACTCACTATAGGGCGCCGGGAATTCGTCGACTGGATCCGGTACCGAGGAGATCTGCC
GCC**GCGATCGCC**

ATGAAGCTAATTACTATCCTGCTCCTCTGCTCCAGGCTCCTGCCAAGTTTAGCGCAGGAAGAAGGTGCC
AGGAAATGGACTGCAATGATGAGACTGTATTTAGGCTGTGGATACTGCTCTGAAGAAATATAATGCTGA
GTTAGAAAAGTGGCAACCAGTTTCTGTTGTACCGAGTGACTGAGGGCACTAAGAAGGATGGCGCTGAAACA
TTGTATTCCTTCAAGTATCAAAATCAAGGAGGGCAACTGCTCTGTTCAAGTGGCCTCACCTGGCAGGACT
GTGACTTCAAGGACGCTGAGGAAGCTGCTACTGGCGAATGCACAACAACCTTTGGGGAAGAAAGAAAATAA
ATTCTCCGTAGCCACCCAGATCTGCAATATTACTCCAGGTAAGGGTCTAAGAAGACAGAGGAGGACCTC
TGTGTCGGGTGTTTCCAACCCATACCGATGGATAGCTCAGACCTGAAGCCTGTTCTGAAACACGCTGTGG
AGCATTTCACAACAACACGAAGCACACCCACCTTTTGCTCTCACAGAAGTAAAGAGTGCCCACTCACA
GGTGGTGGCTGGCATGAATTATAAAATTATCTACTCCATTGTGCAACAAATTTTCAAAGGAGGATTTT
CCTTTCTCCGTGAAGACTGTGTACCCCTCCCTATGGCGATCATGGTGAGTGTAGGGGTACATACCTACG
TGGATATTCATAACACAATTGCTGGCTTCTCACAGAGCTGTGACCTTTATCCAGGAGCGATTTGTTTTC
ACTACTTCCCAAGAAATGCTTTGGCTGCCCAAGAACATACCTGTAGACAGCCCGAGCTCAAGGAGGCA
CTTGGTCAATTCAATTGCACAGCTTAATGCACAGCATAATCATCTTTTCTATTTCAAGATTGACACCGTGA
AAAAGGCAACATCACAGGTGTTGCTGGAACAAAATATGTGATTGAGTTCATAGCCAGAGAAACCAATTG
TTCCAAACAAACTAACACAGAAGTACAGCGGACTGTGAGACCAACACCTCGGTCAAAGCCTCAACTGC
AATGCTAACGTGTACATGAGACCTTTGGGAGAACAAGTCGTCGGACTGTCAGATGCCAAGCGCTAGACA
TGATGATTTCTAGGCCTCCAGGATTTTACCTTTCCGGCTGGTCAAGTACAAGAACTAAAGAAGGAAC
AACTAGGCTCCTAAACTCATGTGAGTACAAGGGCAGACTCTCAAAGGCAGGGGCAGGCCAGCCGCTGAC
CATCAGGCAGAAGCTTCAACCGTACACCA

ACGCGTACGCGGCCGCTCGAGCAGAAACTCATCTCAGAAGAGGATCTGGCAGCAAATGATATCCTGGATT
ACAAGGATGACGACGATAAGGTTTAA



[View online »](#)

Protein Sequence: >RR201106 representing NM_001009628
 Red=Cloning site Green=Tags(s)

MKLITILLCSRLPLSLAQEEGAQEMDCNDETQAVDTALKKYNAELESQNFLLYRVTEGTTKDDGAET
 LYSFKYQIKEGNCSVQSGLTWQDCDFKDAEEAATGECTTTLGKKENKFSVATQICNITPGKGPKEEDL
 CVGCFQPIPMDDSDLKPVLKHAVEHFNNNTKHTLHFFALTEVKSQVAVGMNYKIIYSIVQTNCSKEDF
 PFLREDCVPLPYGDHGEGRGHTYVDIHNTIAGFSQSCDLYPGDDLFSLLPKKCFGCPKNIPVDSPELKEA
 LGHSIAQLNAQHNHLFYFKIDTVKQKATSQVAVGATKYVIEFIARETNCQNTNTELTADCEKHLGQSLNC
 NANVYMRPWENKVVPTVRCQALDMMISRPPGFSFRLVQVQETKEGTRLLNSCEYKGRLSKAGAGPAPD
 HQAEASTVTP

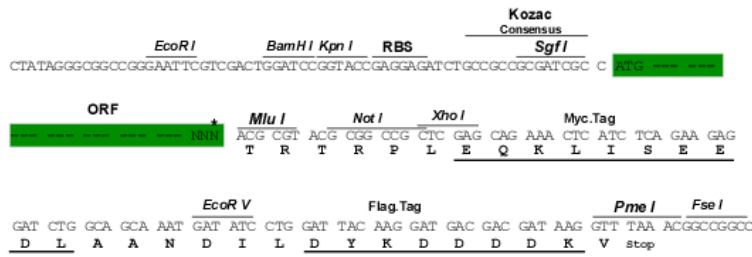
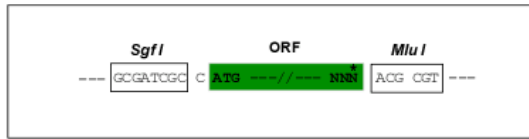
TRTRP**LEQKLISEEDLA**NDILDYKDDDDKV

Restriction Sites:

SgfI-MluI

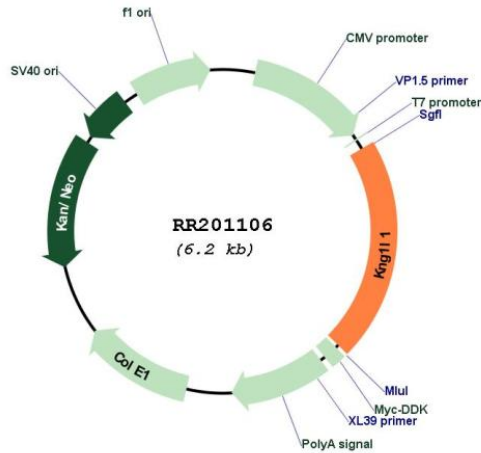
Cloning Scheme:

Cloning sites used for ORF Shuttling:



* The last codon before the Stop codon of the ORF

Plasmid Map:



ACCN:

NM_001009628

ORF Size:	1290 bp
OTI Disclaimer:	The molecular sequence of this clone aligns with the gene accession number as a point of reference only. However, individual transcript sequences of the same gene can differ through naturally occurring variations (e.g. polymorphisms), each with its own valid existence. This clone is substantially in agreement with the reference, but a complete review of all prevailing variants is recommended prior to use. More info
OTI Annotation:	This clone was engineered to express the complete ORF with an expression tag. Expression varies depending on the nature of the gene.
Components:	The ORF clone is ion-exchange column purified and shipped in a 2D barcoded Matrix tube containing 10ug of transfection-ready, dried plasmid DNA (reconstitute with 100 ul of water).
Reconstitution Method:	<ol style="list-style-type: none">1. Centrifuge at 5,000xg for 5min.2. Carefully open the tube and add 100ul of sterile water to dissolve the DNA.3. Close the tube and incubate for 10 minutes at room temperature.4. Briefly vortex the tube and then do a quick spin (less than 5000xg) to concentrate the liquid at the bottom.5. Store the suspended plasmid at -20°C. The DNA is stable for at least one year from date of shipping when stored at -20°C.
RefSeq:	NM_001009628.1 , NP_001009628.1
RefSeq Size:	1519 bp
RefSeq ORF:	1293 bp
Locus ID:	288001
UniProt ID:	P08932
Cytogenetics:	11q23
MW:	47.7 kDa
Gene Summary:	Kininogens are plasma glycoproteins with a number of functions: (1) as precursor of the active peptide bradykinin they effect smooth muscle contraction, induction of hypotension and increase of vascular permeability. (2) They play a role in blood coagulation by helping to position optimally prekallikrein and factor XI next to factor XII. (3) They are inhibitor of thiol proteases.[UniProtKB/Swiss-Prot Function]