

Product datasheet for **RR201094**

Polg2 (NM_001107060) Rat Tagged ORF Clone

Product data:

Product Type: Expression Plasmids
Product Name: Polg2 (NM_001107060) Rat Tagged ORF Clone
Tag: Myc-DDK
Symbol: Polg2
Vector: pCMV6-Entry (PS100001)
E. coli Selection: Kanamycin (25 ug/mL)
Cell Selection: Neomycin
ORF Nucleotide Sequence: >RR201094 representing NM_001107060
Red=Cloning site Blue=ORF Green=Tags(s)

TTTTGTAATACGACTCACTATAGGGCGGCCGGAATTCGTCGACTGGATCCGGTACCGAGGAGATCTGCC
 GCCCGATCGCC

ATGCACTCGGGTGGCGTGGCCAGGGCCTGCCGACGGCCTGCAGGTGCTGGTGTCCGGATATGCGGGTCCACAGATGGGACGCAGCAGCCTACGGACCCCGAGCATGCATTGGCCCGGAGGCCTGGTAGACCTCTGCCGAGGAGGCATTTCTCAGCGGAACGCCACAGCAGCTCAGCAGGCTGCTCTCCTGAGCGGATGCCACTCAGGCTTTGGACCTTTGGGTGTAGAGTTACGAAAGAACCCTAGCCTCACAAATGGTGGTCCCTATGGTGGTGTTCAGGGAGCAGGTCTTCGCGGTGGACTCCCTCCACCACGAGCCGGGCTTTCTCAGCCCCGGGACAGTGCCTTACAGTTAGTTTCTCAGAATGTATACGCGAAATCTTGCAAGACAAAGAGCTGAGTAAGGAACAGCTAGTGGCATTCTTGAGAACTATTAATAAACTTCTGGGAACTACGGGAGACTTCTTTCACGGTGCCTTAGAGCACTATGTTCACTGCCTGGATCTGGTAAACAGAAAGCTACCTTACGGCCTTGCTCAGATTGGAGTGTGTTCCATCCTGTTTGAACCCTAAGGAGATACCCAACAGTGTACAAGAGTTGGCGAAAAGACAGAAAGCTTCGTTGGTGTGGTTTACTCCACAAGGACTTCGAGCCAGTGGCTTGATTTCTGGTTGCGCCATCGGCTTCTGTGGTGGAGAAAGTTGTGTGAGTCCCTCTAACTTCAGCAGCGTGCAGTGCAGGATGGATCGGGTCGTAAGGGATGCAGGCTCTACTACAGCTTCCCTGGGGGAAGGACCACTGGAGACCCTGTGGGATCTAGGAGCAAGAACTCCTAAACGTGTATCCTGGAGATGTGTCTGCGATACAGGGTCGAGATGGGCGGAAAAACGTGGTTCCTCCGTTCTGTCTGTAATGGGGACCTAGACCTGGGCACGCTGGCTTACCTTACGATTCCTCCAGTTCACAGAACTCCTTTTCGAGGAAGAAGAGCCTCCAGAGAAAGGTGCTTAACTTACCCCTTGTTTAGCCCCTATTAAGGTGGCTTAGATGTGGGAAAGGCCCAACCGTGAACCTCCGACAGGTTTGCCAAGGGCTACTCAATGAGTTACTAGAAAAATGGGATTGCTGTGTGGCCTGGTATTTGGAACTGCACAGTCTCATTAGAGCAACTCTATCAAAGTACGATGAGATGAGTATCCTCTTACCGTTCTAATCACTGAAACCACCTTGGAAAGTGGGCTGATCCAGCTTCGAAGCCGAGACACCACGATGAAGGAGATGATGCACATATCCAGCTGAGAGACTTCTGGTCAAGTACCTGGCGTCAGCTGGGAAGGCA

ACGCGTACGCGGCCGCTCGAGCAGAAACTCATCTCAGAAGAGGATCTGGCAGCAAATGATATCCTGGATTACAAGGATGACGACGATAAGGTTTAA



[View online »](#)

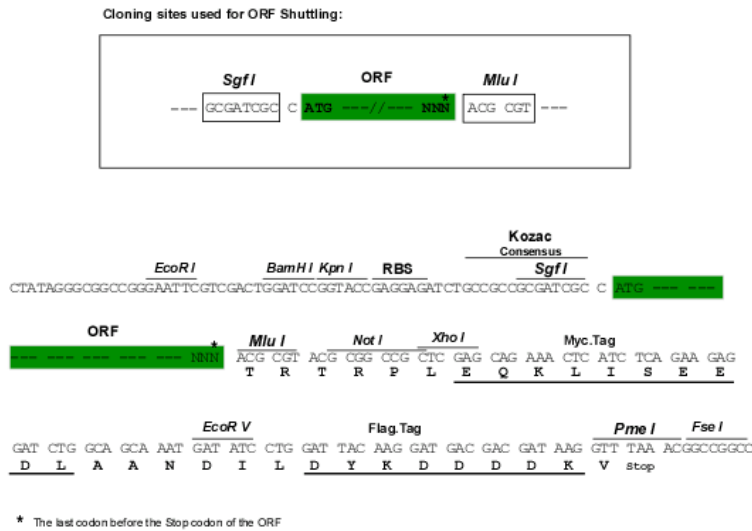
Protein Sequence: >RR201094 representing NM_001107060
 Red=Cloning site Green=Tags(s)

MHSGGVARACRRACRCWLSGYAGPTDGTQQPTDPEHALAREALVDLCRRRHFLSGTPQQLSTAALLSGCH
 SGFGPLGVELRKNLASQWWSSMVVFREQVFAVDSLHHEPGSSQPRDSAFRLVSPECIREILQDKELSKEQ
 LVAFLNLLKTSGLKRETELLHGALEHYVHCLDLVNRKLPYGLAQIGVCFHPVLNPKIEIPNSVTRVGEKTE
 ASLVWFTPTRTSSQWLDLFWLRHRLLLWWRKFVAVSPSNFSSVDCQDGSGRKGCRLLYSSFPWGKEPLETLWDL
 GEQELLNVPYPGDVSAIQGRDGRKNVPSVLSVNGDLDLGTLAYLYDSFQFTENFSRKKSLQRKVLKHP
 CLAPIKVALDVGKPTVELRQVCQGLLNELLENGIAVWPGYLETAQSSLEQLYSKYDEMSELFTVLITET
 TLESLIQLRSRDTTMMKEMHISRLRDLVKYLASAGKA

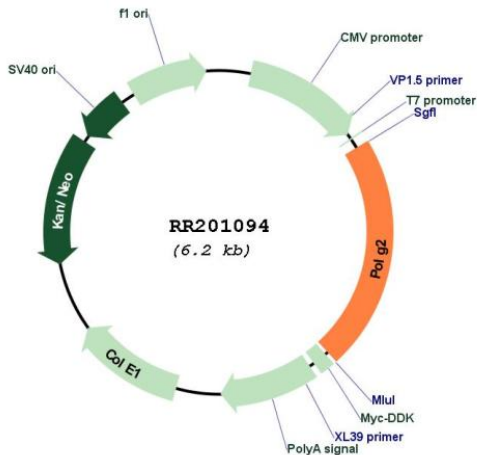
TRTRPLEQKLISEEDLAANDILDYKDDDDKV

Restriction Sites: SgfI-MluI

Cloning Scheme:



Plasmid Map:



ACCN:	NM_001107060
ORF Size:	1377 bp
OTI Disclaimer:	<p>Due to the inherent nature of this plasmid, standard methods to replicate additional amounts of DNA in E. coli are highly likely to result in mutations and/or rearrangements. Therefore, OriGene does not guarantee the capability to replicate this plasmid DNA. Additional amounts of DNA can be purchased from OriGene with batch-specific, full-sequence verification at a reduced cost. Please contact our customer care team at custsupport@origene.com or by calling 301.340.3188 option 3 for pricing and delivery.</p> <p>The molecular sequence of this clone aligns with the gene accession number as a point of reference only. However, individual transcript sequences of the same gene can differ through naturally occurring variations (e.g. polymorphisms), each with its own valid existence. This clone is substantially in agreement with the reference, but a complete review of all prevailing variants is recommended prior to use. More info</p>
OTI Annotation:	This clone was engineered to express the complete ORF with an expression tag. Expression varies depending on the nature of the gene.
Components:	The ORF clone is ion-exchange column purified and shipped in a 2D barcoded Matrix tube containing 10ug of transfection-ready, dried plasmid DNA (reconstitute with 100 ul of water).
Reconstitution Method:	<ol style="list-style-type: none"> 1. Centrifuge at 5,000xg for 5min. 2. Carefully open the tube and add 100ul of sterile water to dissolve the DNA. 3. Close the tube and incubate for 10 minutes at room temperature. 4. Briefly vortex the tube and then do a quick spin (less than 5000xg) to concentrate the liquid at the bottom. 5. Store the suspended plasmid at -20°C. The DNA is stable for at least one year from date of shipping when stored at -20°C.
RefSeq:	NM_001107060.1 , NP_001100530.1
RefSeq Size:	1872 bp
RefSeq ORF:	1380 bp
Locus ID:	303612
Cytogenetics:	10q32.1
MW:	51.6 kDa