

## Product datasheet for **RR201090**

### Notum (NM\_001013975) Rat Tagged ORF Clone

#### Product data:

Product Type:	Expression Plasmids
Product Name:	Notum (NM_001013975) Rat Tagged ORF Clone
Tag:	Myc-DDK
Symbol:	Notum
Synonyms:	RGD1307119
Vector:	pCMV6-Entry (PS100001)
E. coli Selection:	Kanamycin (25 ug/mL)
Cell Selection:	Neomycin



[View online »](#)

**ORF Nucleotide Sequence:**

>RR201090 representing NM\_001013975  
 Red=Cloning site Blue=ORF Green=Tags(s)

TTTTGTAATACGACTCACTATAGGGCGGCCGGGAATTCGTCGACTGGATCCGGTACCGAGGAGATCTGCC  
 GCC**CGCATCGCC**

ATGGGCGGAGAGGTGCGCGTGTCTACTGCTGGGCTGTGCACTGGGTTGGGGCAGCGAGGGCAGGA  
 AGACCTGGAGGCCCGTGGCCAGCAGCCACCCAGCCGCGCCCGCCCGCCCGCAGCGGGCTGA  
 GGTGGCGCCGGGAGCCGGCAGCCGGTGGAGAGCTTCCCGCTGGACTTACCGCAGTGGAGGGCAACATG  
 GACAGCTTTATGGCGCAAGTCAAGAGCCTGGCACAGTCCCTGTATCCCTGCTCTGCGCAGCAGCTCAACG  
 AGGACCTGCGCCTTACCTCCTGCTGAACACGTGGTACCTGCAATGACGGCAGCCCGCCGGCTACTA  
 TTTGAAGGAGTCCAAGGGCAGTGGCGGTGTTACTCTTTCTGGAAGGCGGCTGGTATTGCTTCAACCGG  
 GAGAACTGTGACTCCAGATACAGCACCATGCGGCGCTCATGAGCTCAAAGACTGGCCACACACGCGCA  
 CAGGTAAGTATTCTATCCTCCAGCCAGAGGAGAACCACACTGGTGGAAATGCCAATATGGTCTTCAT  
 CCCCTACTGCTCCAGTACGTTTGGAGTGGGGTTCACCCAAGTCTGAGAAGAATGAGTATGCCTTCATG  
 GGTCCCTCATCATCCAGGAAGTGTACGGGAGCTCCTGGTCAAAGGGCTGAGTGGGGCAAAGGTGTTGC  
 TGCTGGCTGGGAGCAGTCTGGGGCACCGGGTGTGTTGAATGTAGACCGCGTGGCTGAGCTGTTGGA  
 GGAGTTGGGCTACCCATCTATCCAGGTGCGGGGCTGGCTGACTCAGGTTGGTTCCTGGACAACAAGCAG  
 TACCGACGGTCAGACTGCATCGATACCATCAACTGTGCACCCACGGAGGCCATCCGCCGAGGCATCAGGT  
 ACTGGAGTGGAAATGGTCCAGAGCGCTGCCAGCGCCAGTCAAGGAAGGAGAGGAATGGAATTGCTTCTT  
 TGGCTACAAAATATCCCACTTGCCTGTCCAGTGTTCGAGTTCAGTGGCTTTTCGATGAGGCTCAG  
 CTGACCGTGGATAACGTGCATCTCACTGGGAGCCGGTTCAGGAGGGCCAGTGGCTGTACATCCAGAATC  
 TGGGCCGAGAAGTGGTGGCACACTCAAGGATGTGCAGGCCAGCTTGGCCCGCCCTGCTGCCATGCA  
 GATCATCATACGGAGCTATTGGACAGATGTCAGGTGAAGGGGACCTCACTGCCCGGGCACTGCATGC  
 TGGGACCGGAGCTTCCATGACAGCCATAAGGCCAGCAAAACGCCATGAAGGGCTGCCCTTTCACCTGG  
 TAGACAGCTGTCCCTGGCCCACTGCAATCCCTCATGCCCTACCATCCGGGACAGTTTACAGGCCAAGA  
 GATGAACGTGGCACAGTTCCTTATGCACATGGGCTTCGATGTGCAGACGGTGGCCCAACAGCAGGGGATG  
 GAGCCAGCAAAGTCTAGGGTACTGAGTAGCGGAAAC

**ACGCGT**ACGCGGCCGCTCGAGCAGAAACTCATCTCAGAAGAGGATCTGGCAGCAAATGATATCCTGGATT  
 ACAAGGATGACGACGATAAGGTTTAA

**Protein Sequence:**

>RR201090 representing NM\_001013975  
 Red=Cloning site Green=Tags(s)

MGGEVRLVLLLLGLLHWVGGSEGRKTWRRRGQPPQPPPPPPPPQRAEVAPGAGQPVESFPLDFTAVEGNM  
 DSFMAQVKSLAQSLYPCSAQQLNEDLRLHLLNLSVTCNDGSPAGYYLKESKGSRRWLLFLEGGWYCFNR  
 ENCDSRYSTMRRMLMSSKDWPHTRTGTGILSSQPEENPHWWNANMVFIYCSSDVWSGASPKSEKNEYAFM  
 GSLIIQEVVRELLVKGLSGAKVLLLAGSSAGGTGVLNVDRAELLEELGYPSIQVRGLADSGWFLDNKQ  
 YRRSDCIDTINCAPTEAIRRGIRYWSGMVPERCQRQFKEGEEWNCFFGYKIYPTLRCPVFVVQWLFDEAQ  
 LTVDNVHLTGQPVQEGQWLYIQNLGRELRTLKDQVQSFAPAACLSEIIIRSYWTDVQVKGTSRPRALHC  
 WDRSFHDSHKASKTPMKGCPFHLVDSCPWPHCNPSCTIRDQFTGQEMNVAQFLMHMGFDVQTVAAQQQGM  
 EPSKLLGILSSGN

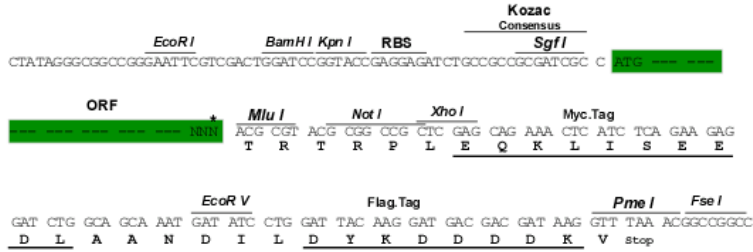
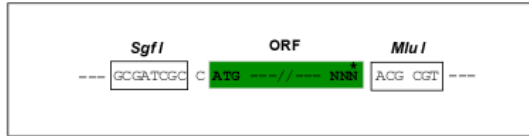
**TR**TRPLEQKLISEEDLAANDILDYKDDDDKV

**Restriction Sites:**

SgfI-MluI

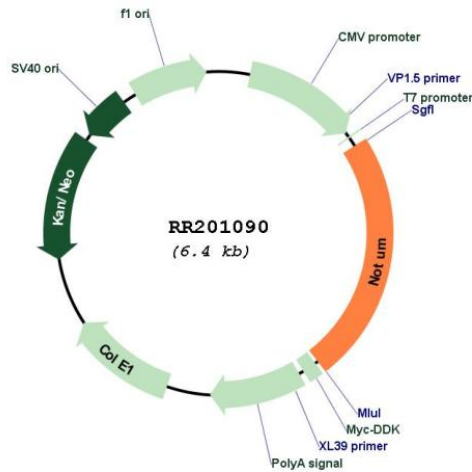
Cloning Scheme:

Cloning sites used for ORF Shuttling:



\* The last codon before the Stop codon of the ORF

Plasmid Map:



ACCN: NM\_001013975

ORF Size: 1509 bp

OTI Disclaimer: The molecular sequence of this clone aligns with the gene accession number as a point of reference only. However, individual transcript sequences of the same gene can differ through naturally occurring variations (e.g. polymorphisms), each with its own valid existence. This clone is substantially in agreement with the reference, but a complete review of all prevailing variants is recommended prior to use. [More info](#)

OTI Annotation: This clone was engineered to express the complete ORF with an expression tag. Expression varies depending on the nature of the gene.

Components: The ORF clone is ion-exchange column purified and shipped in a 2D barcoded Matrix tube containing 10ug of transfection-ready, dried plasmid DNA (reconstitute with 100 ul of water).

**Reconstitution Method:**

1. Centrifuge at 5,000xg for 5min.
2. Carefully open the tube and add 100ul of sterile water to dissolve the DNA.
3. Close the tube and incubate for 10 minutes at room temperature.
4. Briefly vortex the tube and then do a quick spin (less than 5000xg) to concentrate the liquid at the bottom.
5. Store the suspended plasmid at -20°C. The DNA is stable for at least one year from date of shipping when stored at -20°C.

**RefSeq:** [NM\\_001013975.2](#), [NP\\_001013997.2](#)

**RefSeq Size:** 2041 bp

**RefSeq ORF:** 1512 bp

**Locus ID:** 303743

**Cytogenetics:** 10q32.3

**MW:** 56.5 kDa