

## Product datasheet for **RR201056**

### Akr1b1 (NM\_012498) Rat Tagged ORF Clone

#### Product data:

**Product Type:** Expression Plasmids  
**Product Name:** Akr1b1 (NM\_012498) Rat Tagged ORF Clone  
**Tag:** Myc-DDK  
**Symbol:** Akr1b1  
**Synonyms:** Akr1b3; Akr1b4; Aldr1; ALDRED; Alr; ALR-P-I; RATALDRED  
**Vector:** pCMV6-Entry (PS100001)  
**E. coli Selection:** Kanamycin (25 ug/mL)  
**Cell Selection:** Neomycin  
**ORF Nucleotide Sequence:** >RR201056 representing NM\_012498  
Red=Cloning site Blue=ORF Green=Tags(s)

TTTTGTAATACGACTCACTATAGGGCGGCCGGAATTCGTCGACTGGATCCGGTACCGAGGAGATCTGCC  
GCCGCGATCGCC

ATGGCTAGCCATCTGGAACCAACAACGGCACCAAGATGCCACCCTGGGTCTGGGCACCTGGAAGTCTC  
 CTCCTGGCCAGGTGACCGAGGCTGTGAAGTTGCTATCGACATGGGGTATCGCCACATTGACTGCGCCCA  
 GGTGTACCAGAAATGAGAAGGAGGTGGGGTGGCCCTCCAGGAGAAGCTCAAGGAGCAGGTGGTGAAGCGC  
 CAGGATCTCTTATTGTCAGCAAGCTGTGGTGCACGTTCCACGACCAGAGCATGGTAAAAGGGCCCTGCC  
 AGAAGACGCTGAGCGACCTGCAGCTGGACTACCTGGACCTCTACCTTATTCACTGGCCAACCTGGTTCAA  
 GCCTGGGCTGACTATTTCCCTGGATGCATCGGAAACGTGATTCTAGTGACACCGATTTGTGGAC  
 ACTTGGACGGCTATGGAGCAACTAGTGGATGAAGTTTGGTAAAAGCAATCGGAGTCTCCAACCTCAACC  
 CTCTTCAGATTGAGAGGATCTTGAACAACCTGGCTTAAAGTATAAGCCTGCTGTTAACCAGATCGAGTG  
 CCACCCATACCTAACTCAGGAGAAGCTGATTGAGTACTGCCATTGCAAAGGCATCGTGGTACTGCATAC  
 AGTCCCCTTGGTTCTCTGACAGGCCCTGGGCCAAGCTGAGGACCCCTCTCTCTGGAGGATCCCAGGA  
 TCAAGGAAATGCAGCCAAGTACAATAAACTACAGCCAGGTGCTGATCCGGTCCCCATCAAAGGAA  
 CCTGGTCTGATCCCAAGTCTGTGACACCAGCAGTATTGCTGAGAACTTTAAGGTCTTTGACTTTGAG  
 CTGAGCAATGAGGACATGGCCACTCTACTCAGCTACAACAGGAACTGGAGGGTGTGCGCCTTGATGAGCT  
 GTGCCAAACACAAGGATTACCCCTTCCACGCAGAAGTC

ACGCGTACGCGGCCGCTCGAGCAGAACTCATCTCAGAAGAGGATCTGGCAGCAATGATATCCTGGATT  
 ACAAGGATGACGACGATAAGGTTTAA



[View online »](#)

**Protein Sequence:** >RR201056 representing NM\_012498  
Red=Cloning site Green=Tags(s)

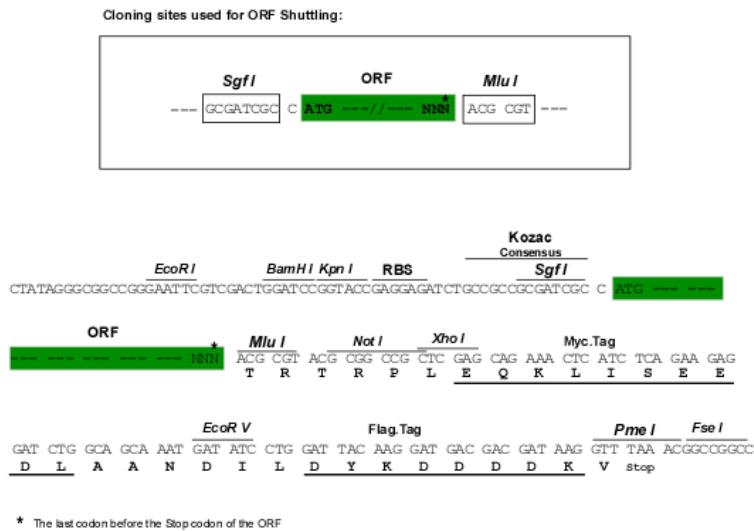
MASHLELNNGTKMPTLGLGTWKSPPGQVTEAVKVAIDMGYRHIDCAQVYQNEKEVGVALQEKLKEQVVKR  
 QDLFIVSKLWCTFHDQSMVKGACQKTLSDLQLDYL DYL IHWPTGFKPGPDYFPLDASGNVIPSDTDFVD  
 TWTAMEQLVDEGLVKAIGVSNFNPLQIERILNKPLKYPKPAVNQIECHPYLTQEKLIEYCHCKGIVVTAY  
 SPLGSPDRPWAKPEDPSLLEDPRIKEIAAKYNKTTAQLVIRFPIQRNLVVIPKSVTPARIAENFKVDFE  
 LSNEEDMATLLSYNRNWRV CALMSCAKHKDY PFHAEV

TRTRPLEQKLISEEDLAANDILDYKDDDDKV

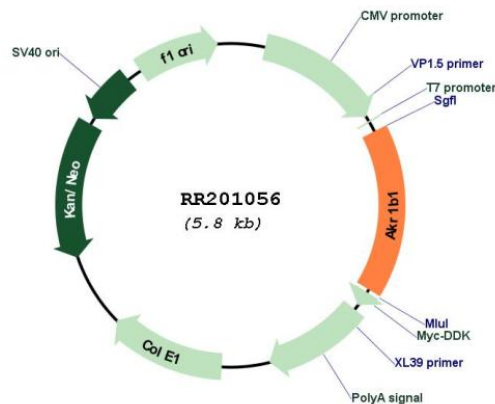
**Restriction Sites:**

Sgfl-MluI

**Cloning Scheme:**



**Plasmid Map:**



**ACCN:** NM\_012498

**ORF Size:** 948 bp

<b>OTI Disclaimer:</b>	The molecular sequence of this clone aligns with the gene accession number as a point of reference only. However, individual transcript sequences of the same gene can differ through naturally occurring variations (e.g. polymorphisms), each with its own valid existence. This clone is substantially in agreement with the reference, but a complete review of all prevailing variants is recommended prior to use. <a href="#">More info</a>
<b>OTI Annotation:</b>	This clone was engineered to express the complete ORF with an expression tag. Expression varies depending on the nature of the gene.
<b>Components:</b>	The ORF clone is ion-exchange column purified and shipped in a 2D barcoded Matrix tube containing 10ug of transfection-ready, dried plasmid DNA (reconstitute with 100 ul of water).
<b>Reconstitution Method:</b>	<ol style="list-style-type: none"><li>1. Centrifuge at 5,000xg for 5min.</li><li>2. Carefully open the tube and add 100ul of sterile water to dissolve the DNA.</li><li>3. Close the tube and incubate for 10 minutes at room temperature.</li><li>4. Briefly vortex the tube and then do a quick spin (less than 5000xg) to concentrate the liquid at the bottom.</li><li>5. Store the suspended plasmid at -20°C. The DNA is stable for at least one year from date of shipping when stored at -20°C.</li></ol>
<b>RefSeq:</b>	<a href="#">NM_012498.1</a> , <a href="#">NP_036630.1</a>
<b>RefSeq Size:</b>	1339 bp
<b>RefSeq ORF:</b>	951 bp
<b>Locus ID:</b>	24192
<b>UniProt ID:</b>	<a href="#">P07943</a>
<b>Cytogenetics:</b>	4q22
<b>MW:</b>	35.8 kDa
<b>Gene Summary:</b>	regulates NF-kappa B mediated mitogenic signaling; may play a role in the polyol pathway [RGD, Feb 2006]