

Product datasheet for **RR201039**

C1s (NM_138900) Rat Tagged ORF Clone

Product data:

Product Type:	Expression Plasmids
Product Name:	C1s (NM_138900) Rat Tagged ORF Clone
Tag:	Myc-DDK
Symbol:	C1s
Synonyms:	r-gsp
Mammalian Cell Selection:	Neomycin
Vector:	pCMV6-Entry (PS100001)
E. coli Selection:	Kanamycin (25 ug/mL)



[View online »](#)

ORF Nucleotide Sequence:

>RR201039 representing NM_138900
 Red=Cloning site Blue=ORF Green=Tags(s)

TTTTGTAATACGACTCACTATAGGGCGGCCGGAATTCGTCGACTGGATCCGGTACCGAGGAGATCTGCC
 GCC**CGGATCGCC**

ATGGGCAATCGCCAGAGATGTGGTGTCTTCTCTTTCTCTTTGGCATCGTTTTCTGCTGAGCCTA
 CCATGTATGGGGAGATCCTGTCCCTAATTATCCCCAGGCGTACCCCAATGAGGTCGTGAAAACCTGGGA
 CATAGAAGTCCCAGAGGGTTTGGGATTACCTTTACTTCACCCATCTGGACATGGAGCTGTCAGAGAAC
 TGTGCATACGACTCAGTGCAGATAATCTCAGGAGGTATCGAGGAAGAGAGACTCTGTGGCCAGAGTCCA
 GCAAGAGTCCCAACTCCCCACTGTAGAAGAGTTCAATCCCATACAATAGGCTCCAGGTGGTCTTTAC
 GTCAGACTTCTCCAACGAGGAACGGTTTACTGGCTTTCAGCGTATTACTCAGCCGTAGATGTAATGAA
 TGCACAGACTTTACAGATGTCCCTTGCAGCCACTTCTGCAATAACTTCATTGGTGGATACTTCTGCTCT
 GCCCCCCAGAATACTTCTCCACGATGACATGAGGACTTGTGGGGTCACTGTAGTGGGGATGTATTCAC
 TGCCTTGATTGGGGAGATCGCAAGTCCCAATTATCCCAACCCATACCCGAGAGAACTCAAGGTGTGAATAC
 CAGATTCGGCTGCAGGAGGGCTTCGACTGGTGTGACTATCCGGAGAGAAGATTTTGATGTGGAACAG
 CGGACTCAGAGGGGAACTGCCACGACAGTTTACTTTTGTGCAAAAAACCAACAGTTTGGTCTTACTG
 TGGCAATGGATTCCCTGGACCTCTAACTATTAACCAGAGCAATACTCTTGATATTGCTTTCAAAC
 GACCTAACGGGGCAAAATAAAGGCTGGAAGCTTCGTTACCATGGAGATCCCATCCCTGTCCCAAAGAAA
 TCAGTGTAAATCTATCTGGGAGCCGAAAAGGCAAAATACGTGTTCAAAGATGTCGTGAAGATAACCTG
 TGTGGATGGATTGAAGTTGTGGAGGGAAATGTTGGCTCAACATCATTCTATTCCACTTGTCAAAGCAAC
 GGACAGTGGAGCAATCCAGGCTAGAGTGTCAACTGTGGACTGTGGTGTCCAGAACCCATTGAGAATG
 GTAAAGTTGAAGACCCAGAAGACTGTATTCGGCTCCGTCATCCACTACACGTGCGAAGAGCCATATTA
 CTACATGGAACAGGAAGAAGGCGGAGAGTATCACTGTGCTGCTAATGGGAGCTGGGTGAATGACCAGCTG
 GGTGTCGAGCTTCCAAAATGTATTCCAGTCTGTGGAGTACCCACCGAGCCCTTAAAGTACAGCAGAGGA
 TATTTGGAGGATACTCTACAAAGATTCAAAGTTTTCTTGGCAGGTCTACTTTGAGTCCCCCGAGGTGG
 CGGGGCTCTTATCGATGAGTACTGGGTGCTGACGGCCGCTCACGTTGTGGAGGGAACTCTGACCCAGTG
 ATGTATGTCGGTCCACACTTCTGAAAATAGAGCGGTTGAGAAATGCCAGAGGCTCATCACTGAACGTG
 TGATTATTCATCCAGCTGGAACAAGAGGACGACCTGAATACACGACAAATTTTGACAATGACATTGC
 CCTGGTGCAGCTCAAAGACCCTGTGAAAATGGGACCCACTGTTGCCCCATCTGCCTGCCAGAAACCTTC
 TCAGACTACAACCCTCAGAGGTTGACCTGGGGTGTATCTCTGGGTGGGCGGAAACAGAGATTAGAACCA
 ATGTTATTCAACTCAGAGGGCGAAGTTACCCATAACATCTTTAGAAAAGTGCCAGCAGGTGAAAGTGGA
 AAACCCGAAAGCGAGGTCAAACGACTATGTTTTACTGACAACATGATCTGTGCTGGGGAAAAGGTGTG
 GACAGCTGTGAAGGTGACAGCGGAGGGGCTTTTGTCTGCGGTCGCCAATGTCAAGGACCCCAATTTCT
 ATGTGGCTGGCCTGGTGTCTGGGGAAAAAGTGTGGGACCTATGGGATCTACACAAAGGTAAAGAACTA
 CGTGGACTGGATCCTGAAAATATGCAGGAGAATAGTGGGCCAAGAAGGAC

ACGCGTACGCGGGCCGCTCGAGCAGAACTCATCTCAGAAGAGGATCTGGCAGCAATGATATCCTGGATT
 ACAAGGATGACGACGATAAGGTTTAA

Protein Sequence: >RR201039 representing NM_138900
 Red=Cloning site Green=Tags(s)

MGKSPMEMWCFVFFSLLASFSAEPTMYGEILSPNYPQAYPNEVVKTWDIEVPEGFGIHLFYTHLDMELSEN
 CAYDSVQIISGGIEEERLCGQRSSKSPNSPTVEEFQFPYNRLQVVFTSDF SNEERFTGFAAYYSADVNE
 CTDFTDVPCSHFCNNFIGGYFCSCPPEYFLHDDMRTCGVNCSDVFTALIGEIASPNYPNPYPENSRC
 QIRLQEGFRLVLTIRREDFDVEPADSEGNCHDSL TFAAKNQQFGPYCGNGFPGPLTIKTQSNTLDIVFQT
 DLTGQNKGWKLRYPHGDPIPCPKEISANSIWEPEKAKYVFKDVVKITCVDGFVVEGNGVSTSFYSTCQSN
 GQWSNSRLECQPVDCGVPEPIENGKVEDPEDTVFGSVIHYTEEPYMYEQEEGGEYHCAANGSWVNDQL
 GVLEPKCIPVCGVPTPEFKVQQRIFGGYSTKIQSFPWQVYFESPRGGALIDEYWVLTAAHVVEGNSDPV
 MYVGSTLLKIERLRNAQRLITERVIIHPSWKQEDDLNTRTNFDNDIALVQLKDPVKMGPTVAPICLPETF
 SDYNPSEVDLGLISGWGRTEIRTNVIQLRGAKLPITSLEKQQVKVENPKARSNDYVFTDNMICAGEKGV
 DSCEGDSGGAFALPVPNVKDPKFYVAGLVSWGKCGTYGIYTKVKNYVDWILKTMQENS GPKKD

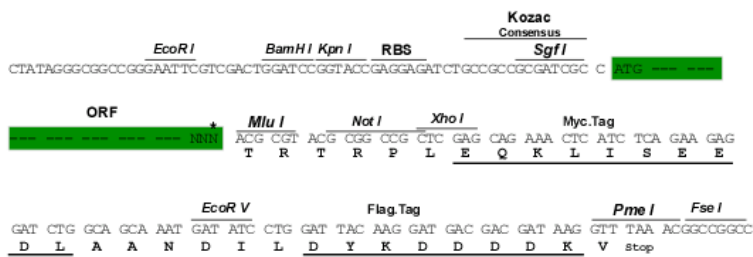
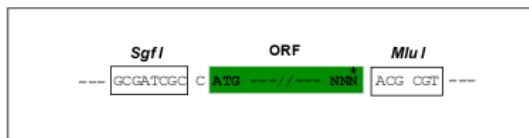
TRTRPLEQKLI SEEDLAANDILDYKDDDDKV

Chromatograms: https://cdn.origene.com/chromatograms/ja1799_a08.zip

Restriction Sites: Sgfl-MluI

Cloning Scheme:

Cloning sites used for ORF Shuttling:



* The last codon before the Stop codon of the ORF

ACCN: NM_138900

ORF Size: 2082 bp

OTI Disclaimer: Due to the inherent nature of this plasmid, standard methods to replicate additional amounts of DNA in E. coli are highly likely to result in mutations and/or rearrangements. Therefore, OriGene does not guarantee the capability to replicate this plasmid DNA. Additional amounts of DNA can be purchased from OriGene with batch-specific, full-sequence verification at a reduced cost. Please contact our customer care team at custsupport@origene.com or by calling 301.340.3188 option 3 for pricing and delivery.

The molecular sequence of this clone aligns with the gene accession number as a point of reference only. However, individual transcript sequences of the same gene can differ through naturally occurring variations (e.g. polymorphisms), each with its own valid existence. This clone is substantially in agreement with the reference, but a complete review of all prevailing variants is recommended prior to use. [More info](#)

OTI Annotation: This clone was engineered to express the complete ORF with an expression tag. Expression varies depending on the nature of the gene.

Components: The ORF clone is ion-exchange column purified and shipped in a 2D barcoded Matrix tube containing 10ug of transfection-ready, dried plasmid DNA (reconstitute with 100 ul of water).

Reconstitution Method:

1. Centrifuge at 5,000xg for 5min.
2. Carefully open the tube and add 100ul of sterile water to dissolve the DNA.
3. Close the tube and incubate for 10 minutes at room temperature.
4. Briefly vortex the tube and then do a quick spin (less than 5000xg) to concentrate the liquid at the bottom.
5. Store the suspended plasmid at -20°C. The DNA is stable for at least one year from date of shipping when stored at -20°C.

RefSeq: [NM_138900.1](#), [NP_620255.1](#)

RefSeq Size: 2908 bp

RefSeq ORF: 2085 bp

Locus ID: 192262

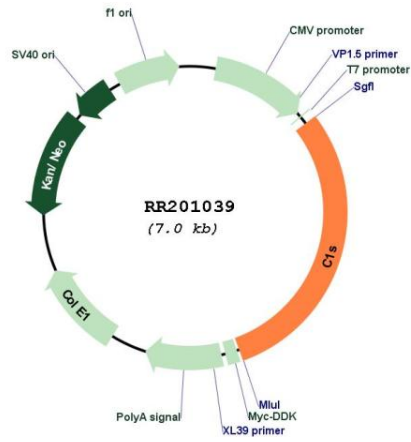
UniProt ID: [Q6P6T1](#)

Cytogenetics: 4q42

MW: 78.2 kDa

Gene Summary: a secreted enzyme; may have a role in glial cell differentiation [RGD, Feb 2006]

Product images:



Circular map for RR201039