

## Product datasheet for **RR201037**

### **Espn (NM\_019622) Rat Tagged ORF Clone**

#### **Product data:**

Product Type:	Expression Plasmids
Product Name:	Espn (NM_019622) Rat Tagged ORF Clone
Tag:	Myc-DDK
Symbol:	Espn
Synonyms:	Je
Vector:	pCMV6-Entry (PS100001)
E. coli Selection:	Kanamycin (25 ug/mL)
Cell Selection:	Neomycin



[View online »](#)

ORF Nucleotide  
Sequence:

>RR201037 representing NM\_019622  
Red=Cloning site Blue=ORF Green=Tags(s)

TTTTGTAATACGACTCACTATAGGGCGGCCGGAATTCGTCGACTGGATCCGGTACCGAGGAGATCTGCC  
GCC**CGGATCGCC**

ATGGCCCTGGAACAGGCGATGCAGGCGGCACGGCGGGGCGACCTGGACGTGCTGAGTCCCTGCACGCC  
CCGGCCTGCTGGGCCTTCTCTGCGCGACCCGCTAGACGCCCTGCCGGTGCAACATGCGGCCCGCTCAGG  
CAAGCTGCACTGTTTGCCTACTTGGTGGAGGAGTTGCCCTCCAGCTGTGTCCCGCGCGCAACGGC  
GCCACACCAGCCATGATGCCGCTGCCACGGGCTACCTCTTTGCCTGCAGTGGCTGCTCACACAGGGT  
GCTGCAGGGTGCAGAAAAAGATAACTCTGGTCCACGGTCTGCACCTGGCTGCCCGCTTTGGCCACC  
GGACGTGGTGAAGTGGCTGCTGTACCAGGGCGGTGCGAACTCTGCCATCACACAGACACGGGCGCCCTG  
CCTATCCACTATGCTGCCGCCAAAGGAGATCTCCCTCCATGAAGCTTCTGTGGGCACTACCCTGAGG  
GAGTGAATGCCAAACCAACAACGGTGCCACGCCCTGTACCTGGCGTGCAGGAGGGCCACCTGGAAGT  
GACGAAGTACCTTGTGCAGGAGTGCAGTGCAGATCCGCACCTGCGCGCCAAGACGGCATGACCCCTG  
CATGCCCGGGCGCAGATGGGCCACAACCCAGTCCCTGGTGTGGCTGGTGGCTTTGCGGACGTGAGCTTT  
CGGAGCAGGACCACGACGGCGCCACAGCCATGCACTTTGCAGCCAGCCGGGCCACACAAAGTGTCTAG  
CTGGCTCCTGCTGCACGGCGCAGAGATCTCCAGGACCTGTGGGGCGGGACCCCGCTGCATGATGCTGCT  
GAGAACGGGGAAGTGGAGTGTGCCAGATCCTCGCGGTGAATGGTGGCGGGCTGGACGTCCGCGACCACG  
ATGGGTATACGGTGGGACCTGGCTGATTTCAATGGCCACACCCACTGCTCCCGCTACCTACGTACGGT  
GCAAAACCTGAGCTTGGAAACACCGAGTCTGTCCCGGATCCATCCATGGACCTGGAGGCAAAAGCAGCCG  
GACTCAGGCATGTCTTACCCAAACACCACCATGTCCGGTCCAGCCGCCAACTTTGACCTTGGCTCACCCA  
CCAGCACCTCTCAACTATGACTCCTGCTCCTCCAGCCATTCCAGCAGCAAGGGTCAGGCTCTACTCG  
AGGTGCCAGATCCTCAGACTTACAGAGCTACATGGACATGCTGAACCCAGAGCCTCGGAGCAAGCAAGGG  
AAGCCTTCATCTTACCACCACCGCCACCAAGCTTCCCTCCACCACACCCCCAGGCACACAGCTGC  
CCCCACTCCACCAGGCTACCCAGCTCCCAATCCCCCTGTGGGGCTGCATTTGGATAACATTTACATGCA  
GACCAAGAACAACCTCCGCCACGTGGAGGTGGACTCCCTCAAGAAGGAGCCGAGCTCCGCGCAGCGCTAC  
TCGGGGCTACGCAGGCAGGATTCGGGGTGTCTCAGGCAGGATTCGGAGCTGCTGCTCAGGCACAACCCG  
GACTGCGCAGGCAGGACTCCGACCGCAACAGCGTTCATTCAGTAAACAGCCAGCACGGGGGACTACTA  
CCGCCAGCTGGGCGCAGCCCGGGGAGCCGCTGGCCGCACGCCCGGCATGGCCACAGCGAGGAGGGCG  
GCGCTGCTCCCGGGAACACGTGCACAACGGCTGCTCCGCGGACTCAAAGCGTCCAGGGAGCTGCCGC  
CGCCACCGCCCGCCCGCCCTGCCGAGGCCCTGAGTTCGCGCGCACCCGCCCCACCTTGCCCATCGA  
GGGCGCGGGCGCAGCCTGCGGACAGCGCGTTCCTCATCTTCTACTGGCAGCACCAATCTTTAACATG  
ATGTCCCCAACGGGTGACAACTCGGAGTTGCTGGCTGAAATAAAAGCAGGCAAGAGTCTGAAACCAACAC  
CGCAGAGCAAGGGGTGACAACAGTGTCTCAGGCAGCGGGCAGCCAGCCTCCAGCCTGAGTCACCACA  
GCCTGCGGTGTCACCTGGGCCATCTCGGGCCGGAGCCCCACCCACCCAGCCTCTGGGCTCAGCCACTG  
CTCAATGGCAGCATAGTACCGGCACCACCTGCCACCCTAGCACCAGGAGTGCATCTGGATGTGGAGGCC  
TCATCCCCACACTTGATGAGCAGGGCCGGCCCATCCCGGAGTGGAAAGCGCCAGGTGATGGTCCGGAAGCT  
GCAGCAGAAAATGCAGGAGGAAGAGGAGCAGCGGAGGAAGGAAGAGAGGAGGAGGCCCGCTGCCAGC  
CTGCCCGCTGGAGACGAGACATTCTTAGGAAGAAGCTGGAGGAGGAGAGGGAGCAGAAGCGAAAAGAGG  
AGGAGCGGCAGAAGCTGGAGGAAATCCAGAGGGCGAAAGAACAGTCGGAGAAGCTGCGGACACTAGGATA  
CGACGAGGCCAAGCTCGCGCCCTGGCAGCGACAGGTATCTTGAAGAAGGGGAGATCCCTAAG

**ACGCGT**ACGCGGCCGCTCGAGCAGAACTCATCTCAGAAGAGGATCTGGCAGCAATGATATCTGGATT  
ACAAGGATGACGACGATAAGGTTTAA

**Protein Sequence:** >RR201037 representing NM\_019622  
 Red=Cloning site Green=Tags(s)

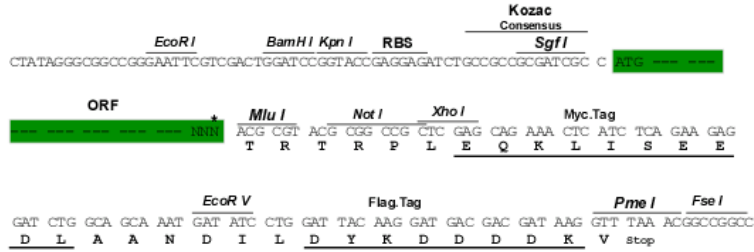
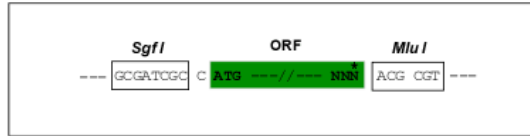
MALEQAMQAARRGDLVLRSLHAAGLLGPSLRDPLDALPVHHAARSGKLHCLRYLVEEVALPAVSRARNG  
 ATPAHDAATGYLSCLQWLLTQGGCRVQEKDMSGATVLHLAARFGHPDVVNWLLYQGGANSAITTDGAL  
 PIHYAAAKGDLPSMKLLVGHYPEGVNAQTNNGATPLYLACQEGHLEVTKYLVQECADPHLRAQDGMTPL  
 HAAAQMGHNPVLVWLVSFADVSEQDHDGATAMHFAASRGHTKVLSWLLLHGAEISQDLWGGTPLHDAA  
 ENGELECCQILAVNGAGLDVRDHDGYTAADLADFNHGHCSRYLRTVQTLSEHRVLSRDPSMDLEAKQP  
 DSGMSSPNTTMSVQPPNFDLGSPTSTLSNYDSCSSSHSSSKGQRSTRGARSSDLQSYMMLNPEPRSKQG  
 KPSSLPPPPPSFPPPPPGTQLPPPPPGYPAPNPPVGLHLDNIYMQTKNKL RHVEVDSLKKEPSSGDGY  
 SGLRRQDSGLLRQDSELLLRHNTGLRRQSDRKQRSFSKQPSTGDYRQLGRSPGEPLAARPGMAHSEEA  
 ALLPGNHVHNGCSADSKASRELP PPPPPPLPEALSSPPPAPPLPIEGAGAACGQRRSSSTGSTKSFNM  
 MSPTGDNSELLAEIKAGKSLKPTPQSKGLTTVFSGSGQPASQPESPQPAVSPGPSRARSPTPPASGPQPL  
 LNGSIVAPPATLAPGVHLDVEALIPTLDEQGRPIPEWKRQVMVRKLLQKMQEEEEQRRKEEEEEARLAS  
 LPAWRRDILRKKLEEEERQKRKEEERQKLEEIQRAKEQSEKLRTLGYDEAKLAPWQRQVILKKGEIPK

TRTRPLEQKLI SEEDLAANDILDYKDDDDKV

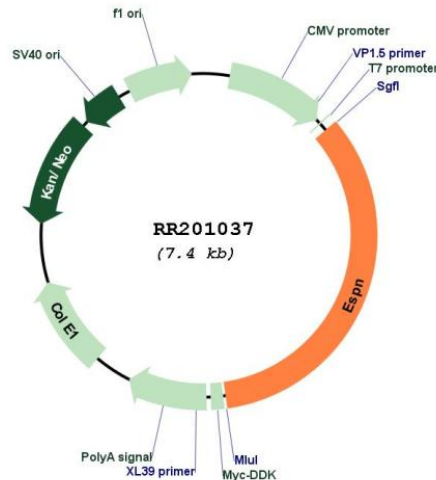
**Restriction Sites:** Sgfl-MluI

Cloning Scheme:

Cloning sites used for ORF Shuttling:



\* The last codon before the Stop codon of the ORF

**Plasmid Map:**


**ACCN:** NM\_019622

**ORF Size:** 2514 bp

**OTI Disclaimer:** The molecular sequence of this clone aligns with the gene accession number as a point of reference only. However, individual transcript sequences of the same gene can differ through naturally occurring variations (e.g. polymorphisms), each with its own valid existence. This clone is substantially in agreement with the reference, but a complete review of all prevailing variants is recommended prior to use. [More info](#)

**OTI Annotation:** This clone was engineered to express the complete ORF with an expression tag. Expression varies depending on the nature of the gene.

**Components:** The ORF clone is ion-exchange column purified and shipped in a 2D barcoded Matrix tube containing 10ug of transfection-ready, dried plasmid DNA (reconstitute with 100 ul of water).

**Reconstitution Method:**

1. Centrifuge at 5,000xg for 5min.
2. Carefully open the tube and add 100ul of sterile water to dissolve the DNA.
3. Close the tube and incubate for 10 minutes at room temperature.
4. Briefly vortex the tube and then do a quick spin (less than 5000xg) to concentrate the liquid at the bottom.
5. Store the suspended plasmid at -20°C. The DNA is stable for at least one year from date of shipping when stored at -20°C.

**RefSeq:** [NM\\_019622.2](#), [NP\\_062568.2](#)

**RefSeq Size:** 3322 bp

**RefSeq ORF:** 2517 bp

**Locus ID:** 56227

**Cytogenetics:** 5q36

**MW:** 90.7 kDa

**Gene Summary:** is a fusion protein which binds actin filaments to each other and to the membranes [RGD, Feb 2006]