

Product datasheet for **RR200962**

Adgrb2 (NM_001107914) Rat Tagged ORF Clone

Product data:

Product Type:	Expression Plasmids
Product Name:	Adgrb2 (NM_001107914) Rat Tagged ORF Clone
Tag:	Myc-DDK
Symbol:	Adgrb2
Synonyms:	Bai2
Vector:	pCMV6-Entry (PS100001)
E. coli Selection:	Kanamycin (25 ug/mL)
Cell Selection:	Neomycin
ORF Nucleotide Sequence:	>RR200962 representing NM_001107914 Red=Cloning site Blue=ORF Green=Tags(s)

TTTTGTAATACGACTCACTATAGGGCGCCGGGAATTCGTCGACTGGATCCGGTACCGAGGAGATCTGCC
GCC**CGATCGCC**

ATGACCCAGCCTGTCCCCTCTACTGTCTGTGATTCTGTCCCTGCGCCTGGCCACGGCCTTCGACCCTG
CCCCAGTGCCTGCTCTGCCCTGGCCTCGGGCGTGTCTACGGGGCCTTCTCACTGCAGGACCTCTTTCC
CACCATCGCCTCGGGCTGCTCCTGGACCCTGGAGAACCAGACCCACCAAGTACTCGCTCTACCTGCGC
TTCAACCGACAGGAGCAGGTGTGCACACTTTGCCCCGCGCCTGCTGCCCTGGACCACTACCTGGTCA
ACTTTACGTGTCTGCGGCCTGGTCCGGAGGAAGCCACAGCCCGGGCGGAATCAGAAGTGGGGCGCCAGA
GGAGGAAGCGGAGGCCGAGGCAGCAGCCACGGGCTTGGAGCTGTGTGGTGGCTCAGGCCCTTTCACCTTT
CTGCACTTCGACAAGAATTCGTGCAGCTGTGCCTGTGCGCTGAGCCCTCGGAGGCCCCAGCTGTGCTAG
CGCCTGCTGCCCTGGCCTCCGCTTTGTGGAGTTTTGCTTATCAACAACAACAACCTCCAGCCAGTTAC
CTGCGCGTGTCTGCCGCTGGAGTGAGGAGTGTGGTGGGCTGCAGGCAGGGCTTGTGGCTTTGCTCAG
CCAGGGTGTAGCTGCCCTGGGGAGGCTGGGGCCAGCCCTGCCACCACCACACCTCCGGGGCCTCCAGCTG
CCCACACCTGTCCAATGCCTTGGTGCTGGGGGCCAGCCCTCCTGCTGAGGCCAGCTTGCACCTGGG
GAGCAGCAATGACCTGTTCAACCACCGAGATGAGATACGGTGAGGAGCCGGAAGAGGAACCGAAGGTGAAA
ACCCAGTGGCCAAGGTCTGCAGATGAGCCTGGGCTATACATGGCGCAGACAGCGCACCCAGCAGCTGAGG
AGTGGTCCCGTGGAGCGTGTGTTCCCTGACGTGTGGCAGGGTCTGCAGGTGCGGACCCGCTCCTGCGT
GTCCTCCCTATGGGACCCTGTGCAGCGGGCCCTTCGGGAGACCCGGCCTTGAACAATTTCAGCCACC
TGCCAGTGCACGGCTGTGGGAGGAGTGGGGTCTGGAGCCTGTGCTCCCGCAGCTGCGGGCGGGGGT
CCCGGAGTCGGATGCGGACCTGCGTGCCCCCAGCACGGCGGAAGGCCTGCGAGGGTCCCGAGCTGCA
GACTAAACTCTGCAGTATGGCCGCTGCCCGTGAAGGCCAGTGGCTAGAATGGGGTCCCTGGGGCCA
TGCTCCTCATCTTGTGCCAATGGGACCCAGCAGCGCAGCCGGAAGTGCAGTGTGGCCGGTCCAGCCTGGG
CCAGTGCAGGTGCCCTCACCGATACCGTGTGAGTGCAGCAACTTCGACTGTCCAGCCACTGATGGCAA
GTGGGGGCCATGGAACGCATGGAGCCTGTGCTCCAAGACGTGTGACACGGGCTGGCAACGCCGCTCCCG
ATGTGCCAGGCTCCGGCACGCAGGGCTACCCTTGCAGGGCACGGGAGAGGAGGTGAAACCCTGCAGT



[View online >](#)

AGAAGAGGTGTCCAGCCTTCCATGAGATGTGCAGAGACGAGTACGTCATGCTCATGACGTGGAAGAGGGC
 AGCGGCTGGCGAGATCATTTACAACAAATGTCCCCCTAATGCCTCGGGTCTGCTAGCCGCCGTGTCTC
 CTCAGTGGCCAGGGCGTGGCATACTGGGGACTGCCAGTTTCGCTCGTTGTATATCTCATGAATACCGAT
 ACCTGTACCTGTCACTTCGGGAGCACCTGGCTAAGGGCCAGCGCATGCTGGCAGGTGAGGGCATGTCGCA
 GGTGGTGGGAGCCTACAGGAGCTCCTGGCTCGGCGTACTTACTACAGCGGGGACCTGCTTCTCTGTG
 GACATTCTAAGGAACGTCACTGACACCTTCAAGAGGGCCACCTATGTCCTTCCGCTGATGACGTGCAGC
 GTTTCTCCAGGTGGTGAAGCTTTATGGTGGACTCAGAAAACAAGGATAAGTGGGACGACGCTCAGCAGT
 GTCGCTGGCTCTGTGCACTTGGCTGCGTGTGGGAAGATTTTCATTCACCTCGTGGGCGACGCTCTCAAG
 GCCTTCCAGAGCTCTCTGATTGTACGGACAACCTGGTGTACAGCATTACAGAGAGCCTATCTCAGCGG
 TGTCCAGTGACATCACATTTCCCATGCGGGGCCGAGGGGCATGAAGGACTGGGTACGACATTCAGAGGA
 TCGCCTCTTCTACCAAGGAGGTGCTCAGCCTGTCTCCCGAGGGAAGCCAGCCACACCTGGGGCAGCC
 ACAGCGGGCAGCCCGGGCAGGGGAGGGGCCAGGAACGGTGCCCTGGCCAGGCCCGCCACCAGC
 GCCTTCTCCAGCTGACCCGAAGAGTCTCTCTACTTTGTGATCGGTGCTGTGCTTACCGCACCT
 TGGCCTCATCTGCCGCCCGCAGGCTCCACTGCTGTACCTCCGGGTGATGACAGTACTGTGCT
 CCCCCACCCAGCTCCAGCGGAGCCCTCATTACAGTAGAGCTCTCGTACATCATCAATGGCACCCTG
 ATCCCCACTGTGCCAGCTGGGACTACTCGAGAGCAGATGCCAGCTTGGGGACTGGAACACTGAGAGCTG
 CCAGACCTTGAGACCCAAGCAGCTCACACCCGCTGCCAGTGCCAGCACCTGTCCACCTTGGCCGCTCTG
 GCCCAGCCACCAAGGACCTGACTCTGGAGCTGGCGGGTGTCTCCCTGTCCCCCTGGTGTGCGGTGTG
 CGGTGTCTGCATGGCCCTGCTCAGCTTGTGGCCATCTATGCAGCCTTCTGGAGGTTTATAAAGTCAGA
 ACGCTCCATCATCTTGTGAACCTTCTGCCTGTCCATCTGGCTTCCAACATCCTGATCCTCGTGGCCAG
 TCCCGGGTGTGAGCAAGGGCGTATGCACCATGACAGCTGCCTTCTACACTTCTTCTTGTCTCTCT
 TTTGCTGGGTGCTTACAGAGGCTGGCAATCCTATCTGGCTGTATCGGGCGGATGCGCACCCGCTGCT
 TCGCAAGCGCTTCTCTGCCTGGCTGGGTCTGCCTGCCCTGGTGGTGGTGTGCTCTGTCTTACT
 CGCACAAAGGATACGGCACATCCAGCTACTGTGGCTGTCCCTAGAGGGTGGCCTGCTCTACGCCCTTG
 TGGGTCCAGCAGCAGTATCGTCTGGTGAACATGCTCATCGGAATCATCGTCTTCAACAAGCTCATGGC
 TCGAGATGGCGTCTCAGACAAGTCTAAGAAGCAGAGGGCCGGTGGAGCGGTGCCCTGGGCCAGCCTG
 CTCCTCCCTGCTCAGCGTGTGGAGCGGTCCCCAGCCCCCTGCTCAGCTCAGCCTCGGCCAGGAATGCCA
 TGGCTTCCCTCTGGAGTCTCTGCGTGGTACTGCCTCTCTGGCGTTACCTGGATGTCCGCTGTCTGGC
 CATGACAGATCGCCGCTCCGCTCTTCCAGGCGCTCTTGTGTTTTCAACTCTGCACAAGGCTTTGTC
 ATCACCCCGTGCACTGCTTCTGCGCCGAGAGGTCCAGGATGTGGTAAAGTGCCAGATGGGTGTGTGTC
 GGACTGATGAGAGTGAAGACTCCCAGACTCGTGAAGAACGGACAGCTGCAGATCCTGTGACAGCTTTGA
 AAAGGACGTGGATCTGGCTTGTGACAGAGTCTGTTCAAGGAGGTCAACACTTGCAACCCGTCCACCATC
 ACCGGCACTTTGTCCCGCTGTCTCTGGATGAGGATGAGGAGCCCAAGTCTGTCTCGTGGTCTGAGG
 GTGGCCTCAGCTTCTCACCAGTGCCTGGGAACATCCTAGTACCATGGCAGCCTCGCCAGGTCTGGGGGA
 GCCACCACCACAGGAGACCAACCCTGTGTACATGTGTGGGAGGGTGGCCTGCGGCAATTGGACCTT
 ACATGGCTACGGCCAAGTGAACCAGGCTCTGAGGGGACTACATGGTGTGCCCGGGCGGACTTTGAGCC
 TGCAGCCTGGCGGTGGGGTACAGGGGTGAGGAGGCACCAAGGGCCCGGCTGAGGGGACCCCCGGCG
 GGCTGCCAAGACAGTGGCCACACTGAAGGCTACCCAGCTTCTGTCTGTGGAGCACTCGGGCTAGGG
 CTGGGCCCTGCCTATGGTCTCTCCAGAACCATATGGGATGACCTTCCAACCACCACCACCAACCCCA
 GCGCCCGCAAGTACCAGAGCCAGGAGAACGTAGCCGGACCATGCCCGTACAGTGCCTGGTTCACCCAT
 GAAGCTGGGCTCCCTTGAGCGAAAGAAGCTTCGGTATTCTGACTTGGACTTTGAGAAGGTGATGCATACC
 CGGAAACGGCACTCGGAACCTACCACGAACCTCAACCAGAAGTTCACACTTTCGACCGCTACCGTAGCC
 AGTCTCAGCCAAGGAGAAACCCAGCCCCCTGGGGACGCCCTGGCTTGTCCCAGCACAGGAGGCATCA
 AAGCTGGAGCACTTCAAATCTATGACTGTTGGCTCACTGCCCCCAACCTCGAGAACGGCTGGCTCTG
 CACCGGACAGCAGCTGGGAGCCACAGAACCAGCCAGCGGACTTCCAGACAGAGGTG

ACGCGTACGCGGCCGCTCGAGCAGAACTCATCTCAGAAGAGGATCTGGCAGCAATGATATCTGGATT
 ACAAGGATGACGACGATAAGGTTTAA

Protein Sequence:

>RR200962 representing NM_001107914
 Red=Cloning site Green=Tags(s)

MTPACPLLLSVILSLRLATAFDPAPSACSALASGVL YGAFSLQDLFPTIASGCSWTLENPDPTKYSLYLR
 FNRQEQVCTHFAPRLPLDHVLYNFTCLRPGPEEATARAEEVGRPEEEAEAEAAATGLELCGGSGPFTF
 LHFQDNFVQLCLSAEPSEAPRLAPAAALAFRFVEVLLINNNSSQFTCGVLCRWSEECGRAAGRACGFAQ
 PGCSCPGEAGASPATTTTPGPPAAHTLSNALVPGGPAPPAEADLHSGSSNDLFTTEMYGEEPEEPEPKVK
 TQWPRSADEPGLYMAQTGDPAAEWSPWSVCSLTCGQGLQVTRTRSCVSSPYGTLCSGPLRETRPCNNSAT
 CPVHGVEEWGSWSLCSRSCGRGSRMRMTCVPPQHGGKACEGPELQTKLCSMAACPVEGQWLEWGPWGP
 CSSSCANGTQQRSRKCSVAGPAWATCAGALTDRECSNFDCPATDGKWPWNAWSLCSKTCDTGWQRRFR
 MCQASGTQGPCEGTGEEVKPCSEKRCPAFHEMCRDEYVLMTWKRAAAGEIYKCPPNASGSASRRCL
 LSAQGVAYWGLPSFARCISHEYRYLYLSLREHLAKGQRM LAGEGMSQVVRSLQELLARTRYSGDLLFSV
 DILRNVTDTFKRATYVPSADDVQRFQVVSFVSDSENKDKWDDAQVSPGSHLLRVVDFIHLVGDALK
 AFQSSLIVTDNLVISIQREPI SAVSSDITFPMRGRGMKDWVRHSEDRLF LKPEVLSLSSPGKPATPGAA
 TAGSPGRGRPGTVPPGPPAHQRLLPADPEESSYFVIGAVLYRTLGLILPPRPPLAVTSRVMTVTVR
 PPTQPPAEPLITVELSYIINGTTDPHCASWDYSRADASLGDWNTESCQTLETQAHTRCQCQHLSTFAVL
 AQPPKDLTLELAGAPSVPLVIGCAVSCMALLTL LAIYAAFWRFKSERSIILLNFCLASILASNILILVQG
 SRVLSKGVCTMTAAFLHFFFLSSFCWVLTAWQSYLAVIGRMTRLVRKRFLCLGWGLPALVVAVSVGFT
 RTKGYGTSSYCWLSLEGGLYAFVGPAAVIVLVNMLIGIIVFNKLMARDGVSDKSKQRAGSERCPWASL
 LLPCSACGAVPSPLLSSASARNAMASLWSSCVLPLLLALTWMSAVLAMTDRRSVLFQALFAVFNSAQGFV
 ITAVHCFLRREVQDVVKCQMGCRTDESESDSPDCKNGQLQILSDFEKVDLACQTVLFKEVNTCNPSTI
 TGTL SRLSLDEDEEPKSCSLVPEGLSF SPLGNILVPMAASPLGEPQQETNPVYMCGEGLRQLDL
 TWLRPSEPGSEGDMVLP RRTL SLQPGGGGTGEEAPRARPEGTPRRAAKTVAHTEGYP SFLSVEHSLGLG
 LGPAYQLNPNYGMTFQPPPTPSARQVPEPGERSRTRMPRTVPGSTMKLGSLERKKLRYSDDLDFEKVMHT
 RKRHSELYHEL NQKFHTFD RYRSQSSAKEKPSPPGGRPGLSQHRRHQSWSTFKSMTLGS LPPKPRERLAL
 HRTAAWEPTPPDGFQTEV

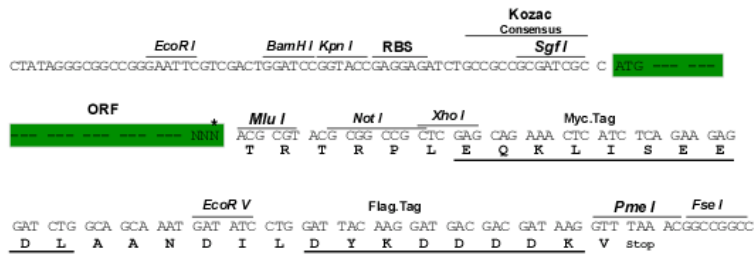
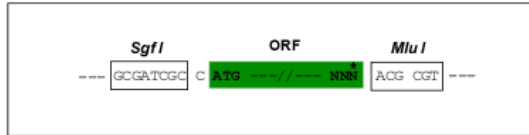
TRTRPLEQKLI SEEDLAANDILDYKDDDDKV

Restriction Sites:

SgfI-MluI

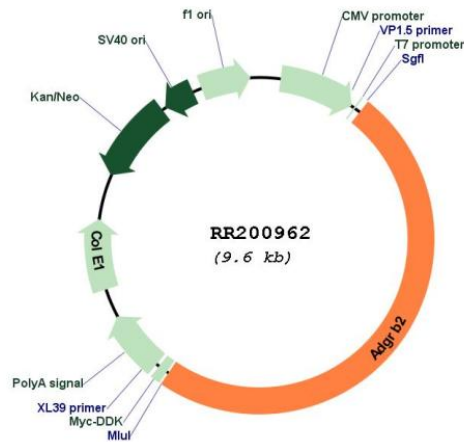
Cloning Scheme:

Cloning sites used for ORF Shuttling:



* The last codon before the Stop codon of the ORF

Plasmid Map:



ACCN: NM_001107914

ORF Size: 4680 bp

OTI Disclaimer: The molecular sequence of this clone aligns with the gene accession number as a point of reference only. However, individual transcript sequences of the same gene can differ through naturally occurring variations (e.g. polymorphisms), each with its own valid existence. This clone is substantially in agreement with the reference, but a complete review of all prevailing variants is recommended prior to use. [More info](#)

OTI Annotation: This clone was engineered to express the complete ORF with an expression tag. Expression varies depending on the nature of the gene.

Components: The ORF clone is ion-exchange column purified and shipped in a 2D barcoded Matrix tube containing 10ug of transfection-ready, dried plasmid DNA (reconstitute with 100 ul of water).

Reconstitution Method:

1. Centrifuge at 5,000xg for 5min.
2. Carefully open the tube and add 100ul of sterile water to dissolve the DNA.
3. Close the tube and incubate for 10 minutes at room temperature.
4. Briefly vortex the tube and then do a quick spin (less than 5000xg) to concentrate the liquid at the bottom.
5. Store the suspended plasmid at -20°C. The DNA is stable for at least one year from date of shipping when stored at -20°C.

RefSeq: [NM_001107914.1](#), [NP_001101384.1](#)
RefSeq Size: 5001 bp
RefSeq ORF: 4683 bp
Locus ID: 313058
Cytogenetics: 5q36
MW: 169.7 kDa