

Product datasheet for **RR200932**

Echdc2 (NM_001106675) Rat Tagged ORF Clone

Product data:

Product Type: Expression Plasmids
Product Name: Echdc2 (NM_001106675) Rat Tagged ORF Clone
Tag: Myc-DDK
Symbol: Echdc2
Synonyms: RGD1308525
Mammalian Cell Selection: Neomycin
Vector: pCMV6-Entry (PS100001)
E. coli Selection: Kanamycin (25 ug/mL)
ORF Nucleotide Sequence: >RR200932 representing NM_001106675
Red=Cloning site Blue=ORF Green=Tags(s)

TTTTGTAAACGACTCACTATAGGGCGCCGGGAATTCGTCGACTGGATCCGGTACCGAGGAGATCTGCC
 GCCCGCATCGCC

ATGCTACGTGCCCTGCCCCGCGCGTGCCTCCGGCGCCCTGGATGTCCCCGGGGGCCCGGGCTGCG
 CTGCCACGCGTCGACCAGGACACCCGAAATCCAAGTGCAGGCGCTGACAGGTCCCAACCAAGGAATCAC
 TGAGATTCTGATGAACAGACCTCATGCCGAAATGCCTTGGGGAATGTCTTTGTCAGCGAGTTGCTGGAA
 GCTCTGGCCCAGCTTCGGAAGACCAGCAAGTCCGAGTCTGCTTTCAGAAAGTGCAGTGAAGGGCGTGT
 TCTGTGCAGGTGCAGACCTGAAGGAACGGGAGCGGATGAGTGCAGCGGAGGTGGGACCTTTGTCCAGCG
 GCTCCGAGGCCTGATGAGTGAGATCGCAGCCTTCCCGCACCCACCATTGCGGCCATGGATGGGTTTGCC
 TTAGGTGGCGGCTTGAGCTTGCCCTCGCTGTGACCTCCGCATAGCAGCTTCTCCGCTGTCATGGGGC
 TAATTGAGACCACTCGAGGACTTCTCCAGGAGCCGGAGGGACTCAGAGGCTGCCCGCTGCCTGGGCGT
 GGCCCTAGCGAAGGAGCTCATCTTACAGGCGGAGACTGAATGGGGTACAAGCCATGAGTTGGGCCTG
 GTAATCATGCTGTGGCTCAGAATGAGGAGGTGATGCTGCCTACCACAGGGCACTGGCACTGGCACAGG
 AGATCTGCCAGGCTCCCATTGCTGTGCGCTGGGCAAAGTTGCCATCGACAGAGGAATGGAGGTGGA
 CATCGCATCAGGGATGGCCATTGAACATATGTGCTATGCCAGAACATCCCAACCCAGGACCGCTGGAA
 GGGATGGCAGCCTTCAGGGAGAAACGACCTCCCAAATTTGTGGCAAG

AGCGGACCGACGCGTACGCGCCGCTCGAGCAGAACTCATCTCAGAAGAGGATCTGGCAGCAAATGATATCC
 TGGATTACAAGGATGACGACGATAAGGTTAA



[View online »](#)

Protein Sequence: >RR200932 representing NM_001106675
 Red=Cloning site Green=Tags(s)

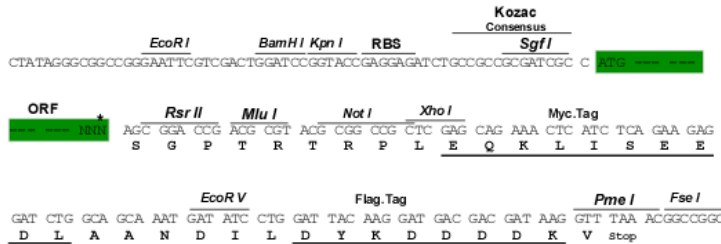
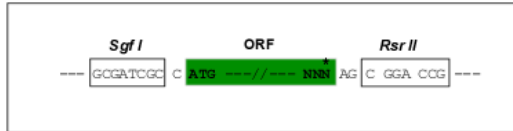
MLRALPRALRLRRPWSPGARGCAAHASTRTPEIQVQAL TGNQGIT EILMNRPHARNALGNV FVSELLE
 ALAQLREDQQVRVLLFRSAVKGVFCAGADLKERERMSAAE VGT FVQRLRGLMSEIAAFPAPTIAAMDGFA
 LGGGLELALACDLRIAASSAVMGLIETTRGLLPGAGGTQRLPRCLGVALAKELIFTGRR LINGVQAHELGL
 VNHAVAQNEEGDAAYHRALALAEILPQAPIAVRLGKVAIDRGM EVDIASGMAIEHMCYAQNIPTQDRLE
 GMAAFREKRPPKFVVGK

SGP TRTRPLEQKLI SEEDLAANDILDYKDDDDKV

Restriction Sites: SgfI-RsrII

Cloning Scheme:

Cloning sites used for ORF Shuttling:



* The last codon before the Stop codon of the ORF

ACCN: NM_001106675

ORF Size: 888 bp

OTI Disclaimer: The molecular sequence of this clone aligns with the gene accession number as a point of reference only. However, individual transcript sequences of the same gene can differ through naturally occurring variations (e.g. polymorphisms), each with its own valid existence. This clone is substantially in agreement with the reference, but a complete review of all prevailing variants is recommended prior to use. [More info](#)

OTI Annotation: This clone was engineered to express the complete ORF with an expression tag. Expression varies depending on the nature of the gene.

Components: The ORF clone is ion-exchange column purified and shipped in a 2D barcoded Matrix tube containing 10ug of transfection-ready, dried plasmid DNA (reconstitute with 100 ul of water).

Reconstitution Method:

1. Centrifuge at 5,000xg for 5min.
2. Carefully open the tube and add 100ul of sterile water to dissolve the DNA.
3. Close the tube and incubate for 10 minutes at room temperature.
4. Briefly vortex the tube and then do a quick spin (less than 5000xg) to concentrate the liquid at the bottom.
5. Store the suspended plasmid at -20°C. The DNA is stable for at least one year from date of shipping when stored at -20°C.

RefSeq: NM_001106675.1, NP_001100145.1

RefSeq Size: 1390 bp

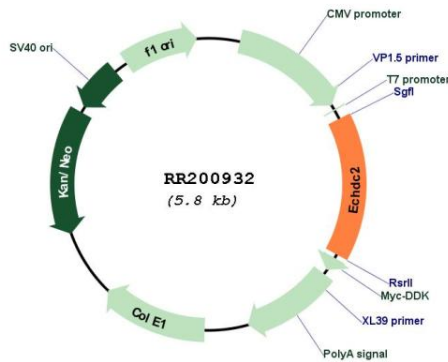
RefSeq ORF: 891 bp

Locus ID: 298381

Cytogenetics: 5q34

MW: 31.8 kDa

Product images:



Circular map for RR200932