

Product datasheet for **RR200909**

Tra2b (NM_057119) Rat Tagged ORF Clone

Product data:

Product Type: Expression Plasmids
Product Name: Tra2b (NM_057119) Rat Tagged ORF Clone
Tag: Myc-DDK
Symbol: Tra2b
Synonyms: Sfrs10; Srsf10
Vector: pCMV6-Entry (PS100001)
E. coli Selection: Kanamycin (25 ug/mL)
Cell Selection: Neomycin
ORF Nucleotide Sequence: >RR200909 representing NM_057119
Red=Cloning site Blue=ORF Green=Tags(s)

TTTTGTAATACGACTCACTATAGGGCGCCGGAATTCGTCGACTGGATCCGGTACCGAGGAGATCTGCC
GCC**GCGATCGCC**

ATGAGCGACAGCGCGGAGCAGAACTACGGCGAGCGGGAATCCCGTTCTGCTTCCCGAAGTGAAGTGCTC
ATGGATCGGGGAAATCTGCACGGCACACACCTGCAAGGTCTCGCTCCAAGGAAGATCAAGACGTTCTAG
ATCAAAGTCAAGATCCAGATCTGAATCTAGGTCTAGATCCAGAAGAAGTCTAGAAGGCATTATACAAGG
TCACGATCACGATCTCGCTCTCATAGACGATCCCGGAGCAGGTCTTACAGCCGAGACTATCGCAGACGCC
ACAGCCACAGCCATTCTCCCATGTCTACTCGAAGGCGTCATGTTGGGAACCGGGCAAATCCTGACCCCAA
CTGTTGTCTTGGAGTGTTGGATTGAGCTTGACACCACAGAAAGAGATCTAAGAGAAGTGTCTCTAAG
TATGGCCCCATTGCTGATGTGTCTATTGTGTATGACCAGCAGTCTAGACGGTCAAGAGGATTTGCCTTTG
TATATTTGAAAATGTAGATGATGCCAAGGAAGCTAAAGAACGTGCCAATGGAATGGAGCTTGATGGACG
TCGGATTAGGGTCGATTTCTCTATAACAAAAGGCCCATACCCCAACACCAGGAATTTATATGGGGAGA
CCCATTATGGCAGTTTACGACGCCGGGACTATTATGACCGAGGATATGATCGGGTTATGATGACCGGG
ACTATTACAGCAGATCATACAGAGGAGGAGGTGGAGGAGGATGATGAGAGCAGCTCAAGATAGAGA
TCAGATTTACAGAAGGCGGTACCTTCTCTTACTACAGTCGTGGAGGATACAGGTCTCGTTCGATCA
AGATCCTACTCACCTCGTCGCTAT

ACGCGTACGCGGCCGCTCGAGCAGAACTCATCTCAGAAGAGGATCTGGCAGCAAATGATATCCTGGATT
ACAAGGATGACGACGATAAGGTTTAA



[View online »](#)

Protein Sequence: >RR200909 representing NM_057119
 Red=Cloning site Green=Tags(s)

MSDSGEQNYGERESRSASRSGSAHGSGKSARHTPARSRKEDSRRSRSKSRSRSESRRSRRSSRRHYTR
 SRSRSRSHRRSRSYSRDRYRRRHSHSHSPMSTRRRHVGNRANPDNCCLVFGLSLYTTERDLREVFVSK
 YGPIADVSIYDQQRSRGRGFAFVYFENVDDAKEAKERANGMELDGRRIRVDFSIITKRPHPTPGIYMGR
 PTYGSSRRRDYDRGYDRGYDDRDYYSRYRGGGGGGWRAAQDRDQIYRRRSPSPYYSRGGYRSRSRS
 RSYSPRRY

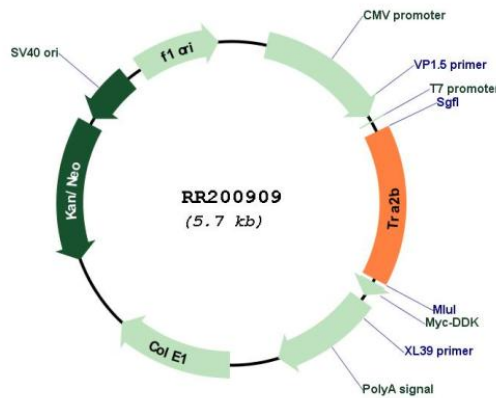
TRTRPLEQKLISEEDLAANDILDYKDDDDKV

Restriction Sites: SgfI-MluI

Cloning Scheme:



Plasmid Map:



ACCN: NM_057119

ORF Size: 864 bp

OTI Disclaimer:	The molecular sequence of this clone aligns with the gene accession number as a point of reference only. However, individual transcript sequences of the same gene can differ through naturally occurring variations (e.g. polymorphisms), each with its own valid existence. This clone is substantially in agreement with the reference, but a complete review of all prevailing variants is recommended prior to use. More info
OTI Annotation:	This clone was engineered to express the complete ORF with an expression tag. Expression varies depending on the nature of the gene.
Components:	The ORF clone is ion-exchange column purified and shipped in a 2D barcoded Matrix tube containing 10ug of transfection-ready, dried plasmid DNA (reconstitute with 100 ul of water).
Reconstitution Method:	<ol style="list-style-type: none">1. Centrifuge at 5,000xg for 5min.2. Carefully open the tube and add 100ul of sterile water to dissolve the DNA.3. Close the tube and incubate for 10 minutes at room temperature.4. Briefly vortex the tube and then do a quick spin (less than 5000xg) to concentrate the liquid at the bottom.5. Store the suspended plasmid at -20°C. The DNA is stable for at least one year from date of shipping when stored at -20°C.
RefSeq:	NM_057119.1 , NP_476460.1
RefSeq Size:	1978 bp
RefSeq ORF:	867 bp
Locus ID:	117259
UniProt ID:	P62997
Cytogenetics:	11q23
MW:	33.7 kDa
Gene Summary:	may act as an RNA splicing factor; may play a role in response to reactive oxygen species [RGD, Feb 2006]