

Product datasheet for **RR200895**

Il2ra (NM_013163) Rat Tagged ORF Clone

Product data:

Product Type: Expression Plasmids
Product Name: Il2ra (NM_013163) Rat Tagged ORF Clone
Tag: Myc-DDK
Symbol: Il2ra
Synonyms: IL2RAC
Vector: pCMV6-Entry (PS100001)
E. coli Selection: Kanamycin (25 ug/mL)
Cell Selection: Neomycin
ORF Nucleotide Sequence: >RR200895 representing NM_013163
Red=Cloning site Blue=ORF Green=Tags(s)

TTTTGTAATACGACTCACTATAGGGCGCCGGAATTCGTCGACTGGATCCGGTACCGAGGAGATCTGCC
GCC**CGGATCGCC**

ATGGAGCCACACTTGCTGATGTTGGGGTTTCTCTCATTACCATAGTACCCGGCTGTTGGGCAGAGCTGT
GTCTGTATGACCCACCGGAGTCCCAATGCCACGTTCAAAGCCCTCTCCTACAAGAACGGCACCATCCT
AACTGTGAATGCAAGAGAGGTTCCGAAGACTGAATGAGCTGGTCTATATGGCTTGTCTAGGAACTCC
TGGAGCAACAAGTGTGAGTGCACAAGCAACTCCCATGACAACCAAGAGAGCAAGTTACACCTCAACCTG
AAGGACAGAAAGAGCAACAGACCACGGACACGCAGAAATCAACACAGTCTGTGTACCAGGAGAACCCTTG
AGGTCAGTGCAGGGAGCCCTCCTTGGAGACATGAAGACACCAAGAGAACTACCACTTCGTGGAAGGA
CAGATAGTTCTCTACACGTGATTCAAGGATACAAGGCTCTACAGAGAGGTCCTGCTATCAGCATCTGCA
AGACAGTGTGTGGGGAGATAAGGTGGACGCATCCCAGCTCACGTGTGTAGATGAAAAAGAACCATCA
ATTTCTGGCTAGTGAAGAATCTCAAGGAAGCAGAAATCTTTCCAGAGAGTGAGGCTTCCTGTCCCACC
CCCAACACAGACTTCTCACAACACAGAAGCAACTACAACATGGAGACATTGTTCCACAAAGGAGT
ATCAGGTAGCAGTGGCCAGCTGCATCTTCTGCTCCTCAGCATCCTCCTGAGTGGGTTACCTGGCA
ACATAGATGGAGGAAGAGCAGAAGAACCATC

ACGCGTACGCGGCCGCTCGAGCAGAAACTCATCTCAGAAGAGGATCTGGCAGCAAATGATATCCTGGATT
ACAAGGATGACGACGATAAGGTTTAA



[View online »](#)

Protein Sequence: >RR200895 representing NM_013163
Red=Cloning site Green=Tags(s)

MEPHLLMLGFLSFTIVPGCAELCLYDPPEVPNATFKALSYKNGTILNCECKRGFRRLNELVYMACLGNS
 WSNNCQCTSNSHDNSREQVTPQPEGQKEQTTDTQKSTQSVYQENLAGHCREPPPWREDTKRIYHFVEG
 QIVLYTCIQGYKALQRGPAISICKTVCGEIRWTHPQLTCVDEKEHHQFLASEESQGSRNSEFPSEASCPT
 PNTDFSQLTEATTTMETFVFTKEYQVAVASCIFLLLSILLLSGFTWQHRWRKSRRTI

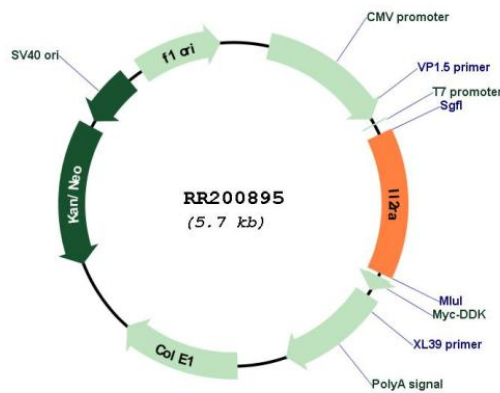
TRTRPLEQKLISEEDLAANDILDYKDDDDKV

Restriction Sites: SgfI-MluI

Cloning Scheme:



Plasmid Map:



ACCN: NM_013163
ORF Size: 801 bp

OTI Disclaimer:	The molecular sequence of this clone aligns with the gene accession number as a point of reference only. However, individual transcript sequences of the same gene can differ through naturally occurring variations (e.g. polymorphisms), each with its own valid existence. This clone is substantially in agreement with the reference, but a complete review of all prevailing variants is recommended prior to use. More info
OTI Annotation:	This clone was engineered to express the complete ORF with an expression tag. Expression varies depending on the nature of the gene.
Components:	The ORF clone is ion-exchange column purified and shipped in a 2D barcoded Matrix tube containing 10ug of transfection-ready, dried plasmid DNA (reconstitute with 100 ul of water).
Reconstitution Method:	<ol style="list-style-type: none"> 1. Centrifuge at 5,000xg for 5min. 2. Carefully open the tube and add 100ul of sterile water to dissolve the DNA. 3. Close the tube and incubate for 10 minutes at room temperature. 4. Briefly vortex the tube and then do a quick spin (less than 5000xg) to concentrate the liquid at the bottom. 5. Store the suspended plasmid at -20°C. The DNA is stable for at least one year from date of shipping when stored at -20°C.
RefSeq:	NM_013163.1 , NP_037295.1
RefSeq Size:	1578 bp
RefSeq ORF:	804 bp
Locus ID:	25704
UniProt ID:	P26897
Cytogenetics:	17q12.2
MW:	30.6 kDa
Gene Summary:	alpha chain of the interleukin 2 receptor; human homolog homodimerizes to form low affinity receptor [RGD, Feb 2006]