

## Product datasheet for **RR200887**

### Ddx46 (NM\_139098) Rat Tagged ORF Clone

#### Product data:

Product Type:	Expression Plasmids
Product Name:	Ddx46 (NM_139098) Rat Tagged ORF Clone
Tag:	Myc-DDK
Symbol:	Ddx46
Vector:	pCMV6-Entry (PS100001)
E. coli Selection:	Kanamycin (25 ug/mL)
Cell Selection:	Neomycin
ORF Nucleotide Sequence:	>RR200887 representing NM_139098 Red=Cloning site Blue=ORF Green=Tags(s)

TTTTGTAATACGACTCACTATAGGGCGGCCGGAATTCGTCGACTGGATCCGGTACCGAGGAGATCTGCC  
GCC**CGATCGCC**

ATGGGCAGGGAGTCTCGCCATTACCGAAAACGGTCAGCATCTCGAGGTCGCTCTGGAAGTCGGTCTAGGA  
GTCGCTCACCCCTCTGACAAAAGAAGCAAACGTGGAGATGACAGGCGTTCAGGAGTAGAGACAGAGACAG  
AAGGAGAGAGAGTCTCGGAGCAGGGACAAAAGGAGATCTCGGTACGGGACAGGAAACGCCTGAGACGT  
TCCAGAAGTAGAGAGCGTGACAGAAGCCGAGAGCGAAGAAGATCTCGAAGCCGGGATAGAAGGCGCTCAA  
GGAGTCGGAGCCGGGACAGGCGGTCCCGTCTTCCAGTCTGGCAGCAAAAGCAAGAAGGCTGAGAACAG  
GTCTAGGTCCAAAGAGAAAGCAGAAGGTGGGACAGCTCCAAGGAGAAGAAGAAAGACAAGGACGACAAG  
GAGGACGAGAAAGAGAAGGATGCTGGGAATTTGACCAGAATAAGCTGGAAGAAGAAATGAGAAAACGAA  
AAGAAAGGTTGAAAAATGGCGAGAAGAGCAGCGTAAAAAGGCGATGGAGAACATAGGGGAGCTGAAGAA  
GGAGATCGAGGAGATGAAGCAGGGGAAGAAGTGGAGCCTGGAAGATGACGACGATGATGAAGATGACCT  
GCCGAGGCTGAGAAGGAAGGGAATGAAATGGAGGACGAGGAGCTGGACCCATTAGATGCCTACATGGAGG  
AAGTGAAGAAGAGGTAAAAAGTTAACATGAGGAGCGTGAAAGGCGGCGCAGGAAATGAGAAGAAGTC  
CGGACCGACTGTACGAAAGTGGTTACTGTGGTAAACAACCAAGAAAGCAGTAGTAGATGCCGACAAGAAG  
AAGGGAGAGCTGATGGAGAATGACCAGGACGCCATGGAGTACTCCTCGGAGGAGGAAGAGGTTGACCTTC  
AGACGGCCCTCACAGGCTACCAGACAAAACAGAGAAAGCTTCTAGAGCCAGTGGATCATGGGAAAATTGA  
GTATGAGCCATTCAGAAAAAATTTTACGTTGAAGTCCAGAAATAGCGAAAATGTCTCAAGAAGAGGTTG  
AATGTGTTTCGGTTGAAATGGAGGGCATTACAGTTAAAGGAAAAGGTTGCCCAAGCCAATTAATCAT  
GGGTCCAGTGTGGAATTTCCATGAAGATACTGAATCCCTCAAAAAGCATGGCTATGAAAAGCCACACC  
AATCCAAACTCAAGCAATTCCTGCTATAATGTCTGGACGAGATTTGATTGGCATTGCCAAGACAGGAAGT  
GGAAAAACCATTTGCTTTTCTTTGCCCCATGTTTAGACACATCATGGATCAGAGGTCATTGGAAGAAGGAG  
AGGGACCAATCGCTGTCATCATGACTCCAACCTCGAGAAGTGGCTTTACAATCACTAAAGAATGTAAGAA  
GTTTTCGAAGACCTTGGGACTGAGAGTGGTCTGTGTATGGAGGGACAGGAATCAGCGAGCAGATTGCT  
GAGCTGAAGAGAGGCGCTGAGATCATTGTTGCACACCTGGCCGGATGATCGACATGCTGGCAGCTAAACA  
GTGGTCCGGTCACAAATCTCGAAGAGTGACATATGTTGTTTTAGATGAAGCAGACAGAATGTTTGACAT  
GGGTTTTGAACCACAGGTCATGCGCATTGTGGACAATGTCGCTCCTGACCGACAGACAGTTATGTTCTCA



[View online »](#)

GCTACTTTCCCAAGAGCTATGGAAGCGTTGCCCCGAGGATCTTGAGCAAGCCCATTGAAGTTCAGGTTG  
 GAGGCCGGAGTGTGGTTTGTCTAGATGTGGAACAACAAGTGATTGTGATTGAAGAAGAGAAGAAATCTT  
 GAAATTGCTGGAGCTTTTAGGCCATTATCAGGAGTCAGGATCTGTCTATTATTTGTGGATAAGCAGGAA  
 CACGCTGATGGTCTTCTGAAGGACTTGATGAGAGCTTCTACCCTTGCATGTCTCTTACGGAGGTATTG  
 ATCAGTATGACAGGGACAGTATCATAAATGACTTTAAGAATGGAACCTGCAAACCTCTCGTAGCCACGTC  
 TGTTGCCGCCCGTGGTCTAGATGTGAAACATCTCATTCTTGTAGTAAATTACAGCTGCCCAATCATTAC  
 GAAGATTACGTGCACAGGGCTGGCGGACTGGAAGAGCAGGCAACAAGGGTTATGCCTACACCTTCATCA  
 CAGAAGACCAAGCTCGATATGCTGGGGACATCATTAAAGCTCTTGAACCTGCGGGACGGCGGTGCCTCC  
 TGACCTAGAGAAACTATGGAGTGACTTCAAAGATCAGCAGAAAAGCTGAAGGAAAAATAATAAAAAGAGC  
 AGCGGCTTCTCTGGCAAGGGTTCAAGTTTGTGAGACAGAGCAGGCTTTAGCCAATGAGAGGAAAAAGC  
 TACAAAAAGCTGCCCTTGGCCTGCAGGATTCTGATGACGAGGACGCCGAGTTGATATTGACGAGCAGAT  
 TGAAAGCATGTTAATCCAAGAAGAGAGTGAAAGACATGGTGTCTCCCGGCACATCCAGTGCCTGCT  
 CCGACTGCGGGCAATGCTGAGAAGCTAGAGATTGCCAAGAGGTTGGCGCTTAGAATCAACGCTCAGAAGA  
 ACCTGGGCATCGAGTCTCAGGTAGATGTGATGCAGCAGGCCACAAATGCCATCCTCAGAGGTGGCCCTCT  
 TCTGGCTCCCACGTGTCTGAAAAACCATCGCAGAGCAGCTTGGCGAGAAGATCAATGCCAAGCTCAAT  
 TACGTGCCCTTGGAGAAAACAGGAAGAAGAGAGACAGGAGGGTGGGAGAGCGAATCTTTCAGAGATACG  
 AGGAAGAATTAGAAATTAATGACTTCCCACAGACGGCGAGGTGGAAGTTACCTCTAAGGAAGCCTTGCA  
 GAGGATCAGTGAGTACTCGGAAGCCGCATCACAATCAGAGGGACCTACTTCCCGCTGGCAAAGAGCCC  
 AAGGAAGGAGAGCGGAAGATCTACTTGGCGATTGAAAGTGCCAACGAGCTGGCTGTGCAGAAAGCAAAGG  
 CAGAGATCACCAGGCTCATAAAGAGGAGCTGATCCGACTGCAAAATTCATACCAACCCACCAACAAAGG  
 ACGATACAAAGTATTA

ACGCGTACGCGGCCGCTCGAGCAGAACTCATCTCAGAAGAGGATCTGGCAGCAAATGATATCCTGGATT  
 ACAAGGATGACGACGATAAGGTTTAA

**Protein Sequence:**

>RR200887 representing NM\_139098  
 Red=Cloning site Green=Tags(s)

MGRESRHYKRKRSASRGRSGRSRSPDKRSKRGGDRRSRSDRDRRRERSRSDKRKRSRSDRKLRR  
 SRSRERDRSRERRRSRSDRRRSRSGRRSRSSPSGSKSKKAENRSRKEKAEGGDSSEKKKDKDDK  
 EDEKEKDAGNFDQNKLEEMRKRKERVEKWREEQRKKAMENIGELKKEIEEMKQGKKWSLEDDDDDDDDP  
 AEAEKEGNEMEDEELDPLDAYMEEVKKEVKKFNMRSVKGGAGNEKKSPTVTKVTVVTTKAVVDADKK  
 KGELMENDQDAMEYSSEEEVLDLQALTYQTKQRKLLPVDHGKIEYEPFRKNFYVEPELAKMSQEEV  
 NVFRLEMEGITVKGKCPKPIKSWVQCISMKILNSLKKHGYEKPTPIQTQAIPAIMSGRDLIGIAKTGS  
 GKTIAFLLPMFRHIMDQRSLEEGEGPIAVIMPTRELALQITKECKKFSKTLGLRVVVCVYGGTGISEQIA  
 ELKRGAEIIVCTPGRMIDMLAANSRVTNLRVTVVVLDEADRMFDMGFEPQVMRIVDNVRPDRQTVMS  
 ATFPRAMEALARRILSKPIEVQVGGRSVVCSDVEQQVIVIEEEKFLKLELLGHVQESGSVIIIFVDKQE  
 HADGLLKDLMRASYPMSLHGGIDQYDRDSIINDFKNGTCKLLVATSVAAARGLDVKHLILVVNYSNPNHY  
 EDYVHRAGRTGRAGNKGYAYTFITEDQARYAGDIKALELSGTAVPPDLEKLWDFKQQAEGKIKKS  
 SGFSGKGFKDETEQALANERKKLQKAALGLQSDDEDAAVDIDEQIESMFSKRVKDMAAPGTSSAPA  
 PTAGNAEKLEIAKRLALRINAQKNLGIESQVDVMQATNAILRGGPLLAPTSAKTIAEQLAEKINAKLN  
 YVPLEKQEEERQEGGQSESFKRYEELEINDFPQTARWKVTSKEALQRISEYSEAAITIRGTYPFPKPEP  
 KEGERKIYLAIESANELAVQKAKAEITRLIKEELIRLQNSYQPTNKGRYKVL

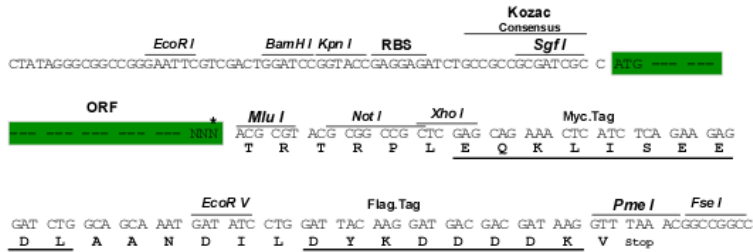
TRTRPLEQKLISEEDLAANDILDYKDDDDKV

**Restriction Sites:**

Sgfl-Mlul

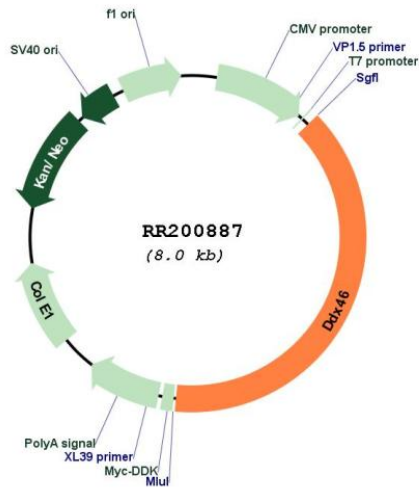
Cloning Scheme:

Cloning sites used for ORF Shuttling:



\* The last codon before the Stop codon of the ORF

Plasmid Map:



ACCN: NM\_139098

ORF Size: 3096 bp

<b>OTI Disclaimer:</b>	The molecular sequence of this clone aligns with the gene accession number as a point of reference only. However, individual transcript sequences of the same gene can differ through naturally occurring variations (e.g. polymorphisms), each with its own valid existence. This clone is substantially in agreement with the reference, but a complete review of all prevailing variants is recommended prior to use. <a href="#">More info</a>
<b>OTI Annotation:</b>	This clone was engineered to express the complete ORF with an expression tag. Expression varies depending on the nature of the gene.
<b>Components:</b>	The ORF clone is ion-exchange column purified and shipped in a 2D barcoded Matrix tube containing 10ug of transfection-ready, dried plasmid DNA (reconstitute with 100 ul of water).
<b>Reconstitution Method:</b>	<ol style="list-style-type: none"><li>1. Centrifuge at 5,000xg for 5min.</li><li>2. Carefully open the tube and add 100ul of sterile water to dissolve the DNA.</li><li>3. Close the tube and incubate for 10 minutes at room temperature.</li><li>4. Briefly vortex the tube and then do a quick spin (less than 5000xg) to concentrate the liquid at the bottom.</li><li>5. Store the suspended plasmid at -20°C. The DNA is stable for at least one year from date of shipping when stored at -20°C.</li></ol>
<b>RefSeq:</b>	<a href="#">NM_139098.1</a> , <a href="#">NP_620798.1</a>
<b>RefSeq Size:</b>	3531 bp
<b>RefSeq ORF:</b>	3099 bp
<b>Locus ID:</b>	245957
<b>UniProt ID:</b>	<a href="#">Q62780</a>
<b>Cytogenetics:</b>	17p14
<b>MW:</b>	117.4 kDa
<b>Gene Summary:</b>	intranuclear RNA helicase [RGD, Feb 2006]