

## Product datasheet for **RR200788**

### Zscan25 (NM\_001108851) Rat Tagged ORF Clone

#### Product data:

Product Type:	Expression Plasmids
Product Name:	Zscan25 (NM_001108851) Rat Tagged ORF Clone
Tag:	Myc-DDK
Symbol:	Zscan25
Synonyms:	Zfp498; Znf498
Vector:	pCMV6-Entry (PS100001)
E. coli Selection:	Kanamycin (25 ug/mL)
Cell Selection:	Neomycin



[View online »](#)

**ORF Nucleotide Sequence:**

>RR200788 representing NM\_001108851  
 Red=Cloning site Blue=ORF Green=Tags(s)

TTTTGTAATACGACTCACTATAGGGCGGCCGGGAATTCGTCGACTGGATCCGGTACCGAGGAGATCTGCC  
 GCC**CGGATCGCC**

ATGCTGAAAGAGCGTCTGGAGATGGCCGAAGATCCTCAGCAGCAGATGGGTGCTCCAGTGGTCAAAGTGG  
 AGAAGGAGCTGCCATGGGGCAGGGGAGGGGAGGACTCTAGTCTGAGGCTTTTCGGCTAAGGTTTCGGCA  
 GTTCCGCTACCAAGAGGCTGCTGGTCCCCAGGAAGCCCTCAGGGAGCTCCAAGAGCTGTGTCGACGGTGG  
 CTGAGGCCTGAGCTGCACACCAAGAGCAGATCCTGGAGCTGCTGGTGGTGGAGCAGTTCCTCACCATCC  
 TGCCCCGAGAGCTCTACACCTGGATCCGGGAACACAGCCAGACAGTGGCAAGGCTCTGGTGGCCATGGT  
 GGAGGAGCTGATGGGAGCACGGAGGCCAAGGCGGTTCCATGCCATGCCAGGGGAGAAGCAGCTGGTCACA  
 GCCCTGGGCGGAGGATCTTGGAATCAGGTATCCACTTGGGGCCAGTAGAAGTCAAGCCTGAGTGGGGGA  
 TCCCTCAGGGTGAAGGAGTTCAGAGCTTAGGCCAAGCACCGCAGAACAGCTGAGCCAGGGCCCTGGAGA  
 TGGGACACAGGCCTCCAGGAGCAAGCATTGCCATTCTTACGTGGGTTTCAAGGCTTCCACTGTGAGT  
 GCCAGAGACCAAGAGATTGCAGCTGGGTTCCCTGCAGCCAGTCCAGGGTCTGGGGCCATTTAAAGACA  
 TGACTTTGGGTTTCCCTGAGGAGGAGTGGAGGCACGTAGCCCCGGCACAGATTGACTGCTTTGGGGAATA  
 TGTGGACTCTCAGGACTGTGGCGCCCTCCAGGTGCTGGGAGCAAGGAGAAGGAGGCTAAGCCCCAGCAA  
 GAAGACCTGAAGAGAGCATTGTTGGGTTGACTTCCGATGGGTTTGGAGAAGCTGCCATCCAGGTTCCCTG  
 TGCCAGGGGGCACCTGTGAGCAGGAGCCTGGGGGCTCTGGGACCAGTGTGCCTGGGCTTCTGCTCCTCA  
 GCCTGGCGTCCCCTGCCTGAGGCCCTCAGCGCCACAGTTCTTCTGGAAGCCATTCCAGTGCCTGAG  
 TGTGGGAAAGGCTTCAGTCGGAGCTCAACCTTGTGAGGCACAGCGGACCCACGAGGAAGAGAAAGCCT  
 TTGGCTGTGTGGAGTCCGGGAAAGGTTTCACTTAAGGGAATACCTACCAAGCATCAGAGGAAAGCCACT  
 GGGCAAGAGGCCCTACGTGTGCGGAGAGTGTGGAAGACCTTCACTCAGAGGCATCACCTGGAGGTGCAC  
 CAGCGCAGCCACACCGGGGAGAAGCCCTACAAGTGTGCAGACTGCTGGAAGGGCTTCAGCCGGAGGCAGC  
 ATTTGCTGGTGCACCGCAGGACACACACCGGGGAGAAGCCCTACACCTGCGAGTGTGGCAAGAGCTTCAG  
 CAGGAACGCCAACCTGGCCGTGCACCGTGCAGCGCACACAGGGGAGAAGCCCTACGGCTGCCAGGTGTGC  
 GGCAAGCGCTTCAGCAAGGGGGAGCGACTGGTGCAGCACCAGAGGATCCACACAGCGGAGAAGCCCTATC  
 ACTGCCAGCCTGCGGCCGAGCTTCAACCAGAGGTCCATCCTTAACCGTCATCAGAAGACCCAGCATCG  
 CCAGGAGCCTCCAGTGCAG

**ACGCGT**ACGCGGCCGCTCGAGCAGAAACTCATCTCAGAAGAGGATCTGGCAGCAAATGATATCCTGGATT  
 ACAAGGATGACGACGATAAGGTTTAA

**Protein Sequence:**

>RR200788 representing NM\_001108851  
 Red=Cloning site Green=Tags(s)

MLKERLEMAEDPQQMGAPVVKLEKELPWGRGGEDSSPEAFRLRFRQFRYQEAAGPQEALRELQELCRRW  
 LRPELHTKEQILELLVLEQFLTILPRELYTWIREHSPDSGKALVAMVEELMGSTEAKAVPCHAQGEQLVT  
 ALGGGSWQSGIHLGPVEVKPEWGIPIQEGVQSLGPSTAEQLSQPGDGTQAFQEALPILHVGSGLPVTS  
 ARDQEI AAGFLAATSQGLGPFKDMTLGFP EEEWRHVAPAQIDCFGEYVDSQDCGAPPGAGSKEKEAKPQQ  
 EDLKRAFVGLTSDGFGEAAIQVPVPGGTCEQEPGSGTSVPGLPAPQPGVPLPEALSAHSSFWKPFQCP  
 CGKGF SRSSNLVRHQRTHEEEKAFGCVCEGKGF LREYLTKHQRTLHGKRPYVCGECKWTF SQRHHLEVH  
 QRSHTGEKPYKADCWKGF SRRQHLLVHRRHTGKPYTCECGKFSRANLAVHRRHTGKPYGCQVC  
 GKRF SKGERLVRHQRIHTGKPYHCPACGRS FNQRSILNRHQKTQHRQEPVQ

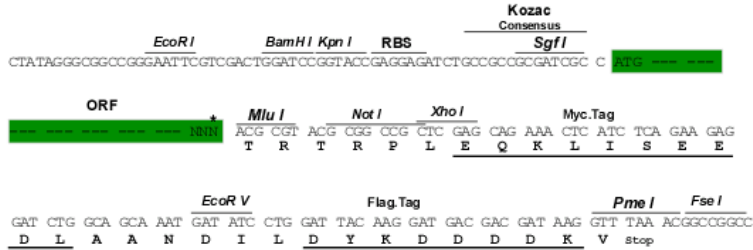
**TR**TRPLEQKLI SEEDLAANDILDYKDDDDKV

**Restriction Sites:**

SgfI-MluI

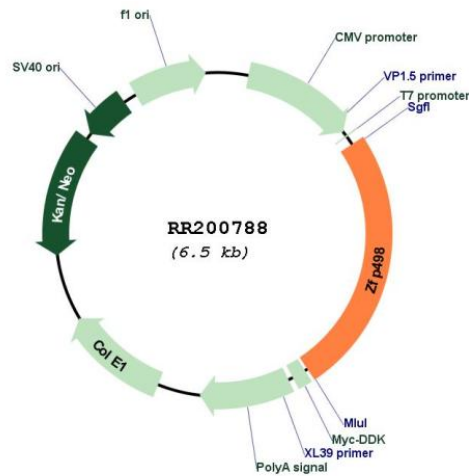
Cloning Scheme:

Cloning sites used for ORF Shuttling:



\* The last codon before the Stop codon of the ORF

Plasmid Map:



<b>ACCN:</b>	NM_001108851
<b>ORF Size:</b>	1629 bp
<b>OTI Disclaimer:</b>	The molecular sequence of this clone aligns with the gene accession number as a point of reference only. However, individual transcript sequences of the same gene can differ through naturally occurring variations (e.g. polymorphisms), each with its own valid existence. This clone is substantially in agreement with the reference, but a complete review of all prevailing variants is recommended prior to use. <a href="#">More info</a>
<b>OTI Annotation:</b>	This clone was engineered to express the complete ORF with an expression tag. Expression varies depending on the nature of the gene.
<b>Components:</b>	The ORF clone is ion-exchange column purified and shipped in a 2D barcoded Matrix tube containing 10ug of transfection-ready, dried plasmid DNA (reconstitute with 100 ul of water).
<b>Reconstitution Method:</b>	<ol style="list-style-type: none"><li>1. Centrifuge at 5,000xg for 5min.</li><li>2. Carefully open the tube and add 100ul of sterile water to dissolve the DNA.</li><li>3. Close the tube and incubate for 10 minutes at room temperature.</li><li>4. Briefly vortex the tube and then do a quick spin (less than 5000xg) to concentrate the liquid at the bottom.</li><li>5. Store the suspended plasmid at -20°C. The DNA is stable for at least one year from date of shipping when stored at -20°C.</li></ol>
<b>RefSeq:</b>	<a href="#">NM_001108851.1</a> , <a href="#">NP_001102321.1</a>
<b>RefSeq Size:</b>	1849 bp
<b>RefSeq ORF:</b>	1632 bp
<b>Locus ID:</b>	363872
<b>Cytogenetics:</b>	12p11
<b>MW:</b>	60.4 kDa