

Product datasheet for **RR200778**

Kank3 (NM_001108989) Rat Tagged ORF Clone

Product data:

Product Type:	Expression Plasmids
Product Name:	Kank3 (NM_001108989) Rat Tagged ORF Clone
Tag:	Myc-DDK
Symbol:	Kank3
Synonyms:	Ankrd47; RGD1308853
Mammalian Cell Selection:	Neomycin
Vector:	pCMV6-Entry (PS100001)
E. coli Selection:	Kanamycin (25 ug/mL)



[View online »](#)

ORF Nucleotide Sequence:

>RR200778 representing NM_001108989
 Red=Cloning site Blue=ORF Green=Tags(s)

TTTTGTAATACGACTCACTATAGGGCGGCCGGAATTCGTCGACTGGATCCGGTACCGAGGAGATCTGCC
 GCC**CGGATCGCC**

ATGGCCAAGTTTGTCTGAATCAGAACCTTCCCGACTGGGCGGTCTTCCCTGTACCCAGGCCCACTG
 GGAGTGCCCGCAGCCCTAGCTCTCCCTACTCTGTGGAGACGCCCTATGGCTTCCACTGGACTGGACTT
 CCTCAAGTACGTGGAGGAAATCGAGCGTGGCCCTGCCTCTCGCCGAGCTCCAGGACCCCCGACGCACGC
 CGCCCGGGCGTCCGAAAGGGCTCGCGGGAGCGGGAGCCAGGAGCTTGGACTCCAGCGAGTCCC
 TGGCCAGTGACGACGGCGGAGCTTCTGGTGCCTCTCTCCGGGGCGTCCAGGGCTCTCGCTACCTCC
 GCTGTCGCCCCGCTCTCTCGCGCAATCCGCGCGTGCAGCACACGCTCTTGGAGACCAGCCGACGACTG
 GAGCAGGCACAGGCTCAAGAGCGCGCTCAGCCCCGCCCGTCCGCGCACGCGCAGTCCGCGGGTCCG
 GCCGACGAGCCCCGCCCAACCCGCCCTTGTTCACCCAGCCCTGTCCTTGTTCGCGGGTCTCG
 CCAACTGCAGCTCGTGGGGAGCAGATGGCCGTGGCGCTCGGGCGCTGCGTGAGCTCGAGGACCAGGCG
 CGCGCTCTGCCGAGCTGCAAGGACAGGTGCGCGCGCTTCCGCGTGAGAAGGCGCGGCTACTGGCCGGG
 CGGTGCAGCCAGCAAGATGTAGAGATCGAGGTGCGCCAGACAAGCTCTCCAGCTTCGGCGCCTCAC
 CGAGCGTCTGGCCACCTCCGATCGCGGAGTCCGCTCCAGGGCTAGCCCCGGGCTGAAGATCCTGACGGG
 TTGGTGCAGGCGCAGCGAAGGAGCGTGCAGGTGCTCGACCCGGCGTCTAGGACACCCGATGGGGAAC
 CCCAGACTCGGGAGGCGGGCACCAGTTCGTGCCTGAGACCCGAGAGGTGGATGCCAGGCGATACCCGA
 GACAAGGGAGGCTGGGGTGGAGTGGTCCCTGAGACCGTGGAGTGGACACGTGGGTGACCGAGGCGCTG
 CTGGGGTTGCCGAGGCTGCAGAGCGTGAGCTGGAAGTCTCCGACGAGCTTGGAGCATCAGCGAGGCG
 TGACGAACTCTTGGGGGCGGATTGAGGAGCTGGAGGAAGCCACGAGGCTATAGTGACCAGGTCTCA
 GTCTCGGAGGTTGCTACTCAAACCTACATTGGGTTACACTGAGAAGACCACACAGACCCGAGCTCCAGTA
 GAGAGCCAGCCAGACCACTGCTGGAGACGAGATGGCCCTGCTGGTATCCTCAAATCCATCATGAAGA
 AGAAAGATGGTACTCCAGGTGCACAATCCAGTCCAGGACCCAAGAGCCTGCAGTTCGTTGGGGTCTCAA
 CGGAGAGTATGAGAGCTCCTCCAGTGGAGTGCAGCAACAGTGTATGAAAGTATGTTGCTGAACTC
 CCCAGGAGTAGCTCTTCTGGGTGAGGAGTATAGCAGTGGGGATCTGACGCTGGAACCTCTGGCCCC
 ACAATGACCAAGATGCGGGGACTGTGAGCTTGGATGCATCCAGAGCAGAAGACAGGGAGAGAAGGGAG
 GTGTGAACTGAACCCCGTTTGGGGAGGCTTGCATTGCTCTGAATCAGCAGCTGATGCGGCCCGTGG
 GTCACCAGCAGAGATGGTAATGCAGCACGCTTGTGGCCAGGAGTGGTTTCGAGTGTCCAGCCAAAAC
 GCTGTGAGGCTGAACCTGTGGCTGGGGTCTTCGAGGGTGAAGAGCCTGGGGCTGAGCTGCTGGCTCA
 TGTGGTGAACCTGGCTGATGGCAACGAAACACAGCTTTCATTACAGCGTGTCTCATGGGAATCTGGCC
 ATTTCCAGCCTGCTACTGGATACAGGGGTCTGCGATGTCAATCACCAGAAATAGAGCTGGCTACTCTGCAC
 TCATGTTGGTGCCTACTTCCGTAGGAAAGGAGGAAGAAGATATGGCTGTGGTCCAGAGACTTTTCAG
 CATGGGTGATGTCAATGCCAAGGCTAGCCAGACTGGACAGACAGCCCTCATGCTGGCCATCAGCCATGGT
 CACCAGGACATGGTAGCTGCCTTGTGGAATGTGGGGCTGATGTCAATGTACAGGATGCTGATGGGGCTA
 CAGCACTCATGTGTGCCAGCGAGTATGGACGCTTGATACAGTTCAGTTGTTGTTGGCCAGCCAGGTTG
 TGACCTAACCATCTTAGACAATGAGGGCACAAGTGCCTTGCCATTGCACTGGAGGCTGAACAGGATGAG
 GTGGCTGCATTGCTCCATGCCACCTGACATCAAACCACCATGACTCCAGGAACAGTCCGACTCCAGGGT
 CTCCACAGCCACTGCAAAGGATACAGGACCTCAACCTCTG

ACGCGTACGCGGCCGCTCGAGCAGAACTCATCTCAGAAGAGGATCTGGCAGCAAATGATATCCTGGATT
 ACAAGGATGACGACGATAAGGTTTAA

Protein Sequence: >RR200778 representing NM_001108989
 Red=Cloning site Green=Tags(s)

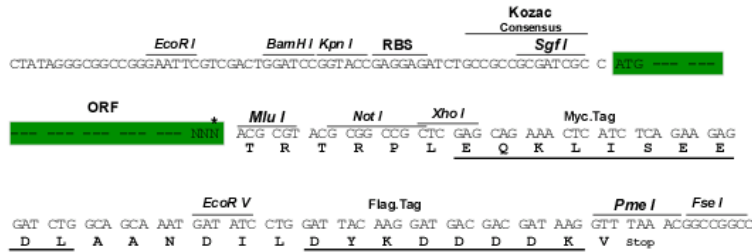
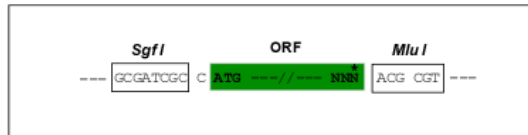
MAKFVLNQNLPDLGGPSLYPGPTGSARSPSPYSVETPYGFHLDLDFLKYVEEIERGPASRRAPGPPHAR
 RPRASGKLAGARSPGAWTSSESLASDDGGASGALSPGAFPGLSLPLSPRSFSRNPRVEHTLLETSRRL
 EQAQAQERALS PARAATRSRPGSGRSPAPNPALASPSVLA SPGPAQLQLVREQMAVALRRLRELEDQA
 RALPELQEQVRALRAEKARLLAGRVQPEQDVEIEVRPDKLSQLRRLTERLATSDRGVRSRASPRaedPDG
 LAARRSEGALQVLDPASRTPDGEPTREAGTEVVPETREVDQAQVPETREAGVEVVPETVEVDTWVTEAL
 LGLPEAAERELELLRTSLEHQRGVSELLRGRLRELEEAHEAIVTRSQSREVATQTTLGYTEKTTQTELPV
 ESQPRPTAGDEMAPAGILKSIMKKKDGTPGAQSSQGPKSLQFVGVNNGEYESSSEDASNSDDEDDVAEL
 PRSSSSGSGDDSSGGSDAGTPGPHNDQDAGDCELEMHPEQKTGREGRCELNPRLREACIALNQQLMRPRG
 VTSRDGNAARLVAQEFWRVSSQKRCQAEVAGVLRGVKSLGPELLAHVVNLADGNGNTALHYSVSHGNLA
 ISSLLLDTGVCVNHQNRAGYSALMLAALTSVGKEEEDMAVVQRLFSMGDVNAKASQTGQTALMLAISHG
 HQDMVAALLECGADVNVQDADGATALMCASEYGRLDTVQLLLAQPGCDLTILDNEGTSALAI AEAEQDE
 VAALLHAHLTSNHHDSQEQSTPGSPTATLQRDTGPQPL

TRTRPLEQKLI SEEDLAANDILDYKDDDDKV

Restriction Sites: Sgfl-Mlul

Cloning Scheme:

Cloning sites used for ORF Shuttling:



* The last codon before the Stop codon of the ORF

ACCN: NM_001108989

ORF Size: 2424 bp

OTI Disclaimer: The molecular sequence of this clone aligns with the gene accession number as a point of reference only. However, individual transcript sequences of the same gene can differ through naturally occurring variations (e.g. polymorphisms), each with its own valid existence. This clone is substantially in agreement with the reference, but a complete review of all prevailing variants is recommended prior to use. [More info](#)

OTI Annotation: This clone was engineered to express the complete ORF with an expression tag. Expression varies depending on the nature of the gene.

Components: The ORF clone is ion-exchange column purified and shipped in a 2D barcoded Matrix tube containing 10ug of transfection-ready, dried plasmid DNA (reconstitute with 100 ul of water).

Reconstitution Method:

1. Centrifuge at 5,000xg for 5min.
2. Carefully open the tube and add 100ul of sterile water to dissolve the DNA.
3. Close the tube and incubate for 10 minutes at room temperature.
4. Briefly vortex the tube and then do a quick spin (less than 5000xg) to concentrate the liquid at the bottom.
5. Store the suspended plasmid at -20°C. The DNA is stable for at least one year from date of shipping when stored at -20°C.

RefSeq: [NM_001108989.1](#), [NP_001102459.1](#)

RefSeq Size: 2703 bp

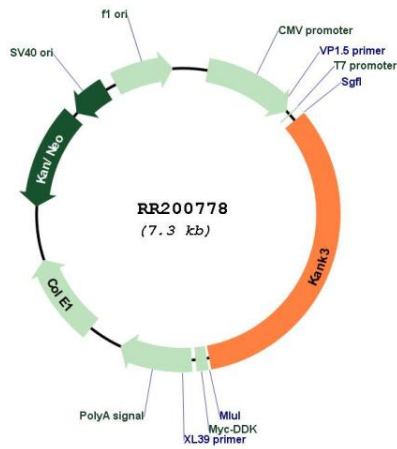
RefSeq ORF: 2427 bp

Locus ID: 366848

Cytogenetics: 7q13

MW: 86.1 kDa

Product images:



Circular map for RR200778