

## Product datasheet for **RR200751**

### Fbxl22 (NM\_001108769) Rat Tagged ORF Clone

#### Product data:

Product Type: Expression Plasmids  
 Product Name: Fbxl22 (NM\_001108769) Rat Tagged ORF Clone  
 Tag: Myc-DDK  
 Symbol: Fbxl22  
 Synonyms: RGD1311830  
 Mammalian Cell Selection: Neomycin  
 Vector: pCMV6-Entry (PS100001)  
 E. coli Selection: Kanamycin (25 ug/mL)  
 ORF Nucleotide Sequence: >RR200751 representing NM\_001108769  
 Red=Cloning site Blue=ORF Green=Tags(s)

TTTTGTAATACGACTCACTATAGGGCGGCCGGAATTCGTCGACTGGATCCGGTACCGAGGAGATCTGCC  
 GCC**CGATCGCC**

ATGCACATAACCCAGCTCAATCGGGAGTGTCTGCTGCGCCTCTTCTCCTTCTGGACAAGGACAGTCGGA  
 AGAGTCTCTCCAGGACTTGCTCCAGCTCCGAGATGTGTTTGAGGACCCACCCTCTGGTCCCTGCTGCA  
 CTTCCATTCCCTCACAGAGCTCAAGAAAGACAACCTCCGGCTGAGCCCTGCACTGCGCAGCCTGTCCATC  
 TGTTGGCATTCCAGCCGTGTGCAAGTGTGTAGCATCGAGGACTGGCTCAAGAGCGCCTTCCAGAGGAGCA  
 TCTGCAGCCAGCACGAGAACCTGGTTAATGATTTCTCCTGCAGGTGTGCAACAGGTGCCCAACCTGGC  
 GTCCGTCACGCTTTCGGGCTGCGGCCACGTCACGGATGACTGCTTAGCGGACTGCTGCTCGGCTGCCCCG  
 CGCCTGCGCGCGCTGCGCCTCGAGAACTGCGCGCGGTTACCAACCGCACGCTGGCGGCGGTGGCCGCGC  
 ACGGGCGCGCGCTGCAGACATTTACGTGGACTTCTGCCGCAACGTGAGCGCCGCGGCCTGCTCCGCT  
 ACGCGCCGCTGTCCGAACCTGATCCTGAGCGCGGAACACAGCGCGGCCATGATACCGGATCAGCCGCCG  
 CGTGCGCGCGCAAGCCCTGCCTCGGTTTTCTCGCCTGCACCGGGAGACAAAGCGCACCTCATCCACGG  
 GTTTCTAT

**ACGCGT**ACGCGGCCGCTCGAGCAGAACTCATCTCAGAAGAGGATCTGGCAGCAAATGATATCCTGGATT  
 ACAAGGATGACGACGATAAGGTTTAA



[View online »](#)

**Protein Sequence:** >RR200751 representing NM\_001108769  
 Red=Cloning site Green=Tags(s)

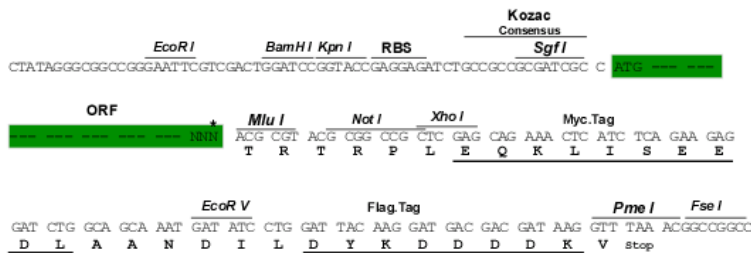
MHITQLNRECLLRLFSFLDKDSRKSLSRTCSQLRDVFEDPTLWLLHFHSLTELKKNFRLSPALRSLSI  
 CWHSSRVQVCSIEDWLKSAFQRSICSQHENLVNDFLLQVCNRCPNLASVTLSGCGHVTDCLARLLLGCPL  
 RLRALRLENCARVTNRTLAAVAHGRALQTFHVDFCRNVSAAGLLRLAACPNLILSAEHSAAAMPDQPP  
 RARASPASVFSAPGRQSPHPTGFY

TRTRPLEQKLISEEDLAANDILDYKDDDDKV

**Restriction Sites:** SgfI-MluI

**Cloning Scheme:**

Cloning sites used for ORF Shuttling:



\* The last codon before the Stop codon of the ORF

**ACCN:** NM\_001108769

**ORF Size:** 708 bp

**OTI Disclaimer:** The molecular sequence of this clone aligns with the gene accession number as a point of reference only. However, individual transcript sequences of the same gene can differ through naturally occurring variations (e.g. polymorphisms), each with its own valid existence. This clone is substantially in agreement with the reference, but a complete review of all prevailing variants is recommended prior to use. [More info](#)

**OTI Annotation:** This clone was engineered to express the complete ORF with an expression tag. Expression varies depending on the nature of the gene.

**Components:** The ORF clone is ion-exchange column purified and shipped in a 2D barcoded Matrix tube containing 10ug of transfection-ready, dried plasmid DNA (reconstitute with 100 ul of water).

- Reconstitution Method:**
1. Centrifuge at 5,000xg for 5min.
  2. Carefully open the tube and add 100ul of sterile water to dissolve the DNA.
  3. Close the tube and incubate for 10 minutes at room temperature.
  4. Briefly vortex the tube and then do a quick spin (less than 5000xg) to concentrate the liquid at the bottom.
  5. Store the suspended plasmid at -20°C. The DNA is stable for at least one year from date of shipping when stored at -20°C.

**RefSeq:** [NM\\_001108769.1](#), [NP\\_001102239.1](#)

**RefSeq Size:** 4460 bp

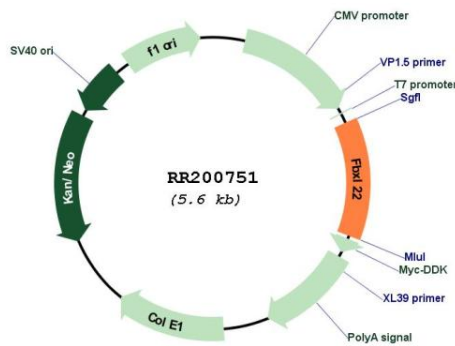
**RefSeq ORF:** 711 bp

**Locus ID:** 363083

**Cytogenetics:** 8q24

**MW:** 26.3 kDa

**Product images:**



Circular map for RR200751