

## Product datasheet for **RR200730**

### **Bcap31 (NM\_001004224) Rat Tagged ORF Clone**

#### Product data:

**Product Type:** Expression Plasmids  
**Product Name:** Bcap31 (NM\_001004224) Rat Tagged ORF Clone  
**Tag:** Myc-DDK  
**Symbol:** Bcap31  
**Synonyms:** Bap31  
**Mammalian Cell Selection:** Neomycin  
**Vector:** pCMV6-Entry (PS100001)  
**E. coli Selection:** Kanamycin (25 ug/mL)  
**ORF Nucleotide Sequence:** >RR200730 representing NM\_001004224  
**Red=Cloning site Blue=ORF Green=Tags(s)**

TTTTGTAATACGACTCACTATAGGGCGGCCGGAATTCGTCGACTGGATCCGGTACCGAGGAGATCTGCC  
GCC**CGATCGCC**

ATGAGTCTGCAGTGGACTGCAGTTGCCACCTTCCTCTACGCAGAGGTCTTTGCTGTGTTGCTTCTCTGCA  
TTCCCTTCATTTCTCCAAAAGATGGCAGAAGATTTTTAAATCTCGGCTGGTTGAGTTGGTAGTGACCTA  
TGGCAACACTTTCTTTGTGGTTCTCATCGTCATCCTTGTGCTGTTGGTCATTGATGCTGTACGTGAGATC  
CGGAAATATGATGATGTAAACAGAAAAGGTGAACCTCCAGAACAATCCAGGTGCCATGGAGCACTTCCACA  
TGAAGCTTTTCCGTGCTCAGAGGAATCTCTATATTGCTGGCTTTTCTTGCTGCTGCCTTCTGCTTAG  
ACGCCTGGTACTCTCATCTCCAGCAGGCCACACTGCTGGCCTCCAATGAAGCCTTTAAAAAGCAGGCA  
GAAAGTGCCAGTGAGGCAGCCAAGAAATACATGGAGGAGAATGATCAGCTAAAGAAGGAACTGCTGAGG  
ATGGAGGCAAGTTGGATGTTGGGAGTCCTGAAATGAAGTTAGAGGAGAACAAGATCCTGAAGACTGATCT  
GAAGAAGCTAAAAGATGAGCTGGCCAGCACCAAGAAAAAATTGAGAAAGCTGAAAACGAGGCTCTGGCT  
ATGCAGAAGCAGTCTGAGGGCCTTACCAAAGAATATGACCGTCTGCTAGAAGAGCACGCCAAGCTGCAGG  
CCTCAGTACGTGGTCCCTCAGACAAGAAGGAGGAG

**ACGCGT**ACGCGGCCGCTCGAGCAGAAACTCATCTCAGAAGAGGATCTGGCAGCAAATGATATCCTGGATT  
ACAAGGATGACGACGATAAGGTTTAA



[View online »](#)

**Protein Sequence:** >RR200730 representing NM\_001004224  
 Red=Cloning site Green=Tags(s)

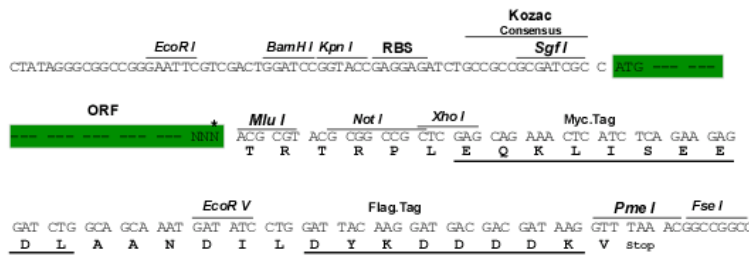
MSLQWTAVATFLYAEVFAVLLLCIPFISPKRWQKIFKSRLVELVVTYGNTFFVVLIVILVLLVIDAVREI  
 RKYDDVTEKVNQLQNNPGAMEHFHMKLFRAQRNLYIAGFSLLL SFLLRRLVTLISQQATLLASNEAFKKQA  
 ESASEAAKKYMEENDQLKKGTAEDGGKLDVGSPEMKLEENKILKTDLKKLKDELASTKKKLEKAENEALA  
 MQKQSEGLTKEYDRLLLEHAKLQASVRGSPDKKEE

TRTRPLEQKLISEEDLAANDILDYKDDDDKV

**Restriction Sites:** SgfI-MluI

**Cloning Scheme:**

Cloning sites used for ORF Shuttling:



\* The last codon before the Stop codon of the ORF

**ACCN:** NM\_001004224

**ORF Size:** 735 bp

**OTI Disclaimer:** The molecular sequence of this clone aligns with the gene accession number as a point of reference only. However, individual transcript sequences of the same gene can differ through naturally occurring variations (e.g. polymorphisms), each with its own valid existence. This clone is substantially in agreement with the reference, but a complete review of all prevailing variants is recommended prior to use. [More info](#)

**OTI Annotation:** This clone was engineered to express the complete ORF with an expression tag. Expression varies depending on the nature of the gene.

**Components:** The ORF clone is ion-exchange column purified and shipped in a 2D barcoded Matrix tube containing 10ug of transfection-ready, dried plasmid DNA (reconstitute with 100 ul of water).

**Reconstitution Method:**

1. Centrifuge at 5,000xg for 5min.
2. Carefully open the tube and add 100ul of sterile water to dissolve the DNA.
3. Close the tube and incubate for 10 minutes at room temperature.
4. Briefly vortex the tube and then do a quick spin (less than 5000xg) to concentrate the liquid at the bottom.
5. Store the suspended plasmid at -20°C. The DNA is stable for at least one year from date of shipping when stored at -20°C.

**RefSeq:** [NM\\_001004224.1](#), [NP\\_001004224.1](#)

**RefSeq Size:** 1231 bp

**RefSeq ORF:** 738 bp

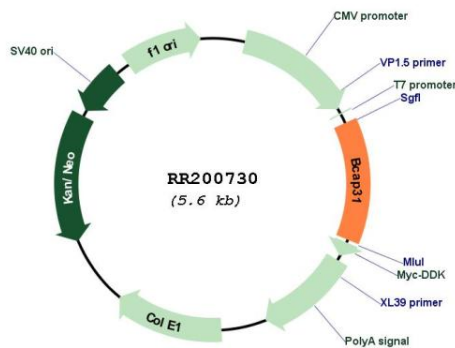
**Locus ID:** 293852

**Cytogenetics:** Xq37

**MW:** 27.9 kDa

**Gene Summary:** mouse homolog plays a role in recruitment of MHC class I molecules to transport vesicles [RGD, Feb 2006]

**Product images:**



Circular map for RR200730