

## Product datasheet for **RR200719**

### **Nlgn1 (NM\_053868) Rat Tagged ORF Clone**

#### **Product data:**

Product Type:	Expression Plasmids
Product Name:	Nlgn1 (NM_053868) Rat Tagged ORF Clone
Tag:	Myc-DDK
Symbol:	Nlgn1
Vector:	pCMV6-Entry (PS100001)
E. coli Selection:	Kanamycin (25 ug/mL)
Cell Selection:	Neomycin



[View online »](#)

**ORF Nucleotide Sequence:**

>RR200719 representing NM\_053868  
 Red=Cloning site Blue=ORF Green=Tags(s)

TTTTGTAATACGACTCACTATAGGGCGGCCGGGAATTCGTCGACTGGATCCGGTACCGAGGAGATCTGCC  
 GCC**CGGATCGCC**

ATGGCACTTCCCAGATGCATGTGGCCAAATATGTTTGGAGAGCCATGATGGCATGTGTGGTCCACAGGG  
 GATCGGGTGCCCCGTTGACTCTCTGCTTGTGGGATGTTTGTACAGACTTCCACGTACTCTCTCAAAA  
 GTTGGATGATGTAGACCCATTGGTTACTACTAACTTTGGCAAAAATAAGGGGAATTAAGAAAAGAACTCAAT  
 AATGAAATTTTGGGGCCTGTCATTCACTTCTTGGGGTCCATATGCTGCTCCACCAACAGGAGAATC  
 GATTTCCAGCCTCCAGAACCACCTCTCCCTGGTCTGATATCCGGAATGCCACTCAGTTTGTCTGTATG  
 TCCCCAGAATATCATTGATGGCAGATTGCCTGAAGTTATGCTTCTGTGTGGTCCACTAATAACTGGAT  
 GTGGTTTCTCATATGTGCAAGACCAGAGTGAAGACTGTCTATACTTAACATCTATGTCCCACTGAAG  
 ATGTA AAAAGAATATCCAAGGAATGTGCCAGAAAACCCGGCAAGAAAATATGTAGAAAAGGAGATATTCG  
 GGACAGTGGGGTCCCAAACAGTGATGGTGTACATCCATGGTGGCTTACATGGAAGGTACTGGAAAT  
 CTATATGATGGGAGTGTGTTGGCAAGCTACGGTAAATGTGATCGTATCACAGTCAACTATCGGCTTGGGG  
 TACTTGGCTTCTTGAGCACAGGGGATCAGGCTGCCAAAGGAAACTACGGGCTCCTTGACCTCATCCAGGC  
 CCTCAGATGGACCAGCGAGAACATTGGGTCTTTGGTGGTGACCCCTTGCGAATCACCGTGTGGGATCA  
 GGCGTGGGGGTTTCACTGTCAATCTGCTGACTTTATCCATTATTCTGAAGGTAACCGTGGGAGCAATT  
 CAACCAAAGGACTTTTTCAACGAGCAATAGCTCAGAGTGGAAACAGCCCTTCCAGCTGGGCTGTTAGTTT  
 CCAGCCTGCAAAATACGCTAGAATTCTAGCCACAAAAGTTGGCTGCAATGTGTGAGTACAGTAGAGTTA  
 GTAGAATGCCTGCAGAAGAAGCCTTACAAGAAGTTGTTGATCAAGATGTTCAACCAGCCGATACCACA  
 TAGCCTTGGACCTGTGATCGATGGTGTGTAATACCAGATGACCCTCAGATACTGATGGAACAAGGAGA  
 GTTCTCAATTATGATATCATGTTAGGAGTTAACCAAGGGGAAGGGTTGAAGTTGTGAAAACATAGTA  
 GATAGTGTGATGGTGTATCAGCCAGTATTTGACTTTGCTGTCTTAATTTTGTGATAATTTATATG  
 GATATCTGAAGGCAAAGATGTTTTGAGAGAAACCATTAAATTCATGTATACTGACTGGGCTGATCGCCA  
 TAATCCTGAAACTAGAAGGAAGACATTGTTGGCTTTGTTACAGACCATCAGTGGGTAGCACCCGCTGTG  
 GCTACAGCAGACCTTCACTCGAACTTTGGCTCACCTACATACTTCTATGCCTTTTATCATCATTGCCAAA  
 CAGACCAAGTCCAGCTTGGGCTGATGCAGCTCATGGGGATGAGGTTCCCTATGTATTGGGAATCCCAT  
 GATTGGCCCTACAGAGTATTTCTTGAATTTCTCAAGAATGATGTGATGTTGAGTGTGTAGTAATG  
 ACATACTGGACGAATTTGCTAAAACCGGTGACCCAAATCAACCAGTTCCCTCAAGACACAAAATTCATTC  
 ATACCAAACCAACCGCTTTGAAGAAGTAGCATGGACCAGATATCCAGAAAGACCAACTTTATCTCCA  
 TATTGGATTAAAACCGAGAGTTAAAGAACATTACAGAGCCAATAAGGTAATCTCTGGTTGGAGCTGGTA  
 CCTCATCTGCATAATCTCAATGACATTTCTCAGTATACCTCGACAACAATAAGTGCCATCAACAGACA  
 TCACTCTCAGACCTACAAGGAAAAATCCACTCCAGTCACATCAGCCTTTCCCACTGCCAAGCAGGATGA  
 TCCCAAACAACAACCAAGTCCCTTCTCGGTAGATCAAAGGGACTACTCCACAGAGCTAAGTGTACAATC  
 GCAGTGGGAGCCTCTCTGCTGTTTCTGAACATCTTGGCTTTTGCAGCCCTATACTACAAGAAAGACAAGA  
 GGAGACATGATGCCACCGAGGTGCAGCCCTCAGCGCACCAACGACCTAACCCATGCTCCAGA  
 AGAGGAAATTATGTCTCTCCAAATGAAGCACACTGACTTGGATCAGAGTGTGAGTCCATCCATCCACAT  
 GAGGTGGTTCTTCGGACCGCCTGCCCCAGATTATACTCTTGCTATGAGGAGGTACCCGATGATGTTT  
 CTTAATGACACCTAACCCATCACAATGATTCCAAACACTATACCAGGGATTACGCCCTTACATACATT  
 CAACACATTTACTGGAGGACAGAATAATACACTGCCCCACCCCACTCACCCCATTCACATTCAACA  
 ACCAGGGTA

**ACGGT**ACGCGGCCGCTCGAGCAGAACTCATCTCAGAAGAGGATCTGGCAGCAATGATATCTGGATT  
 ACAAGGATGACGACGATAAGGTTTAA

**Protein Sequence:** >RR200719 representing NM\_053868  
Red=Cloning site Green=Tags(s)

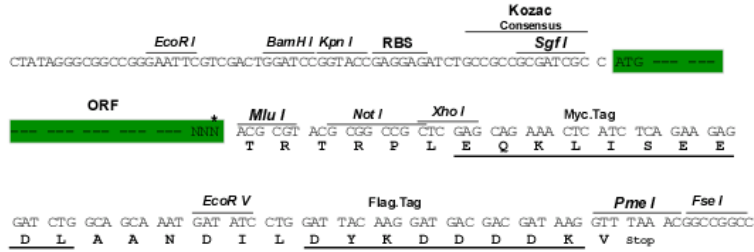
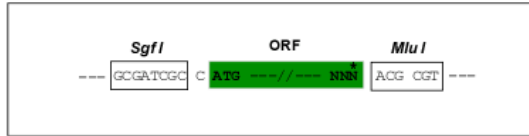
MALPRCMWPNYVWRAMMACVVHRGSGAPLTLCLLGCLLQTFHVL SQKLDDVDPLVTTNFGKIRGIKKELN  
NEILGPVIQFLGVPYAAPPTGEHRFQPPEPPSPWSDIRNATQFAPVCPQNIIDGRLPEVMLPVWFTNNLD  
VVSSYVQDQSEDCLYLNIYVPTEDVKRISKECARKPGKKICRKGDIRDSGGPKPVMVYIHGGSYMEGTGN  
LYDGSVLASYGNVIVITVNYRLGVLGFLSTGDQAAKGNVGLLDLIQALRWTSENIGFFGGDPLRITVFGS  
GAGGSCVNLTL SHYSEGNRWSNSTKGLFQRAIAQSGTALSSWAVSFQPAKYARILATKVCNVSDTVEL  
VECLQKKPYKELVDQDVQPARYHIAFGPVIDGDVIPDDPQILMEQGEFLNYDIMLGVNQGEGLKFVENIV  
DSDDGVSASDFDFAVSNFVDNLYGYPEGKDVLRRETIKFMYPDWADRHNPETRRKTLLALFTDHQWVAPAV  
ATADLHSNFGSPTYFYAFYHHCQTDQVPAWADA AHGDEVYVVLGIPMIGPTELFPCNFSKNDVMLS AVVM  
TYWTNFAKTGDPNQVPVQDTKFIHTKPNRFEEVAWTRYSQKDQLYLHIGLKPRVKEHYRANKVNLWLELV  
PHLHNLNDISQYSTTTTKVPSTDITLRPTRKNSTPVTSAPPTAKQDDPKQQPSPFSVDQRDYSTELSVTI  
AVGASLLFLNILAFAALYKKKDKRRHDVHRRCSPPQRTTTNDLTHAPEEEIMSLQMKHTDLDECESIHPH  
EVLRLTACPPDYTLAMRRSPDDVPLMTPNTITMIPNTIPGIQPLHTFNTFTGGQNNLTPHPHPHSHST  
TRV

TRTRPLEQKLI SEEDLAANDILDYKDDDDKV

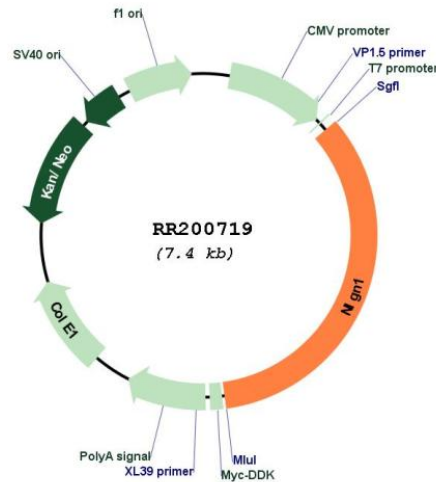
**Restriction Sites:** Sgfl-MluI

Cloning Scheme:

Cloning sites used for ORF Shuttling:



\* The last codon before the Stop codon of the ORF

**Plasmid Map:**


**ACCN:** NM\_053868

**ORF Size:** 2529 bp

**OTI Disclaimer:** The molecular sequence of this clone aligns with the gene accession number as a point of reference only. However, individual transcript sequences of the same gene can differ through naturally occurring variations (e.g. polymorphisms), each with its own valid existence. This clone is substantially in agreement with the reference, but a complete review of all prevailing variants is recommended prior to use. [More info](#)

**OTI Annotation:** This clone was engineered to express the complete ORF with an expression tag. Expression varies depending on the nature of the gene.

**Components:** The ORF clone is ion-exchange column purified and shipped in a 2D barcoded Matrix tube containing 10ug of transfection-ready, dried plasmid DNA (reconstitute with 100 ul of water).

**Reconstitution Method:**

1. Centrifuge at 5,000xg for 5min.
2. Carefully open the tube and add 100ul of sterile water to dissolve the DNA.
3. Close the tube and incubate for 10 minutes at room temperature.
4. Briefly vortex the tube and then do a quick spin (less than 5000xg) to concentrate the liquid at the bottom.
5. Store the suspended plasmid at -20°C. The DNA is stable for at least one year from date of shipping when stored at -20°C.

**RefSeq:** [NM\\_053868.2](#), [NP\\_446320.1](#)

**RefSeq Size:** 3322 bp

**RefSeq ORF:** 2532 bp

**Locus ID:** 116647

**UniProt ID:** [Q62765](#)

**Cytogenetics:** 2q24

**MW:** 94.3 kDa

**Gene Summary:** transmembrane ligand for neuroligins; involved in development and maturation of synaptic connections [RGD, Feb 2006]