

## Product datasheet for **RR200683**

### Vim (NM\_031140) Rat Tagged ORF Clone

#### Product data:

Product Type: Expression Plasmids  
 Product Name: Vim (NM\_031140) Rat Tagged ORF Clone  
 Tag: Myc-DDK  
 Symbol: Vim  
 Vector: pCMV6-Entry (PS100001)  
 E. coli Selection: Kanamycin (25 ug/mL)  
 Cell Selection: Neomycin  
 ORF Nucleotide Sequence: >RR200683 representing NM\_031140  
 Red=Cloning site Blue=ORF Green=Tags(s)

TTTTGTAATACGACTCACTATAGGGCGGCCGGAATTCGTCGACTGGATCCGGTACCGAGGAGATCTGCC  
 GCC**CGATCGCC**

ATGTCCACCAGGTCGGTGTCTCGTCTCTACCGCAGGATGTTCCGGTGGCTCCGGCACATCGAGCCGGC  
 CCAGCTCCAACCGGAGCTATGTGACCACATCCACCCGCACCTACAGCCTAGGCAGCGCGCTGCGCCCCAG  
 CACTAGCCGCAGCCTCTATTCTCGTCCCCGGTGCGCCTATGTGACCCGGTCTCCGCGTGGCGCTG  
 CGGAGCAGCATGCCCGGGTGGCGCTGCTGCAGGACTCCGTGGACTTCTCGCTGGCCGACGCCATCAACA  
 CCGAGTTCAAGAACCCCGCACCAACGAGAAGGTGGAATTGCAGGAGCTGAATGACCGCTTCGCCAACTA  
 CATCGACAAGGTGCGCTTCTCGAGCAGCAGAACAAAATCCTGCTGGCCGAGCTCGAGCAGCTTAAGGGC  
 CAGGGCAAGTCGCGCTGGGCGACCTCTACGAGGAGGAGATGAGGGAGTTGCGCCGGCAGGTGGATCAGC  
 TCACCAATGACAAGGCCCGTGTGAGGTGGAGAGGGACAACCTGGCCGAGGACATCATGCGGCTGCGAGA  
 AAAATTGCAGGAGGAGATGCTCCAGAGGGAGGAAGCCGAGAGCACCTGCAGTCATTGACAGGATGTT  
 GACAATGCTTCTGTCACGTCTTGACCTTGAACGTAAGTGAATCCTTGCAGGAAGAAATGCTTTT  
 TGAAGAAGCTGCACGATGAAGAGATCCAGGAGCTGCAGGCCAGATTGAGAACAGCATGTCAGATCGA  
 TGTGGACGTTTCCAAGCCTGACCTACCCGCTGCCCTGCGTGATGTCCGCCAGCAGTATGAAAGTGTGGCT  
 GCCAAGAACCTCCAGGAGCCGAGGAATGGTACAAGTCCAAGTTTGTGACCTCTCTGAGGCTGCCAACCC  
 GGAACAACGATGCCCTGCGCCAGGCAAAGCAGGAGTCAAACGAATACCGGAGACAGGTGCAGTCACTCAC  
 CTGCGAAGTGGATGCCCTTAAAGGCACTAATGAGTCCCTGGAGCGCCAGATGCGTGAAATGGAAGAGAAT  
 TTTGCCCTTGAAGCTGCTAACTACCAGGACACTATTGGCCGCTGCGAGGATGAGATCCAGAACATGAAGG  
 AAGAGATGGCTCGCCACCTTCGTGAATACCAGGACCTGCTCAATGTAAGATGGCTCTTGACATTGAGAT  
 CGCCACCTACAGGAAGCTGCTGGAAGGGGAGGAGAGCAGGATTTCTGCTCTTCCAACTTTTCTTCC  
 CTGAACCTGAGAGAACTAACCTGGAGTCACTTCTCTGGTTGACACCCACTCCAAAAGAACACTCTGA  
 TTAAGACGGTTGAAACCAGAGACGGACAGGTGATCAATGAGACTTCTCAGCACCAGATGACCTTGAA

**ACGCGT**ACGCGGCCGCTCGAGCAGAACTCATCTCAGAAGAGGATCTGGCAGCAAATGATATCCTGGATT  
 ACAAGGATGACGACGATAAGGTTTAA



Protein Sequence: >RR200683 representing NM\_031140  
 Red=Cloning site Green=Tags(s)

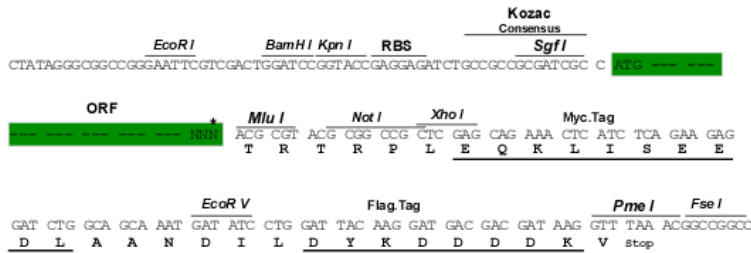
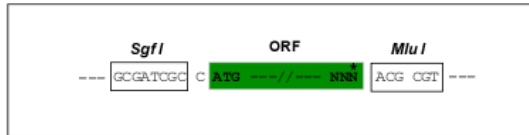
MSTRSVSSSSYRRMFGSGTSSRPSSNRSYVTTSTRTYSLGSALRPSTSRSLYSSSPGGAYVTRSSAVRL  
 RSSMPGVRLQLQSVDFSLADAINTEFKNTRTNEKVELQELNDRFANYIDKVRFLQEQNKILLAELEQLKG  
 QGKSRLGDLYEEMRELRRQVDQLTNDKARVEVERDNLAEDIMRLREKLQEEMLQREEAESTLQSFRODV  
 DNASLARLDLERKVESLQEEIAFLKKLHDEEIQELQAQIQEQHVQIDVDVSKPDLTAALRDVRRQYESVA  
 AKNLQEAEEWYKSKFADLSEAANRNNDALRQAKQESNEYRRQVQSLTCEVDALKGTNESLERQMRMEEN  
 FALAEANYQDTIGRLQDEIQNMKEEMARHLREYQDLLNVKMALDIEIATYRKLLEGEESRISLPLPNFSS  
 LNLRETNLESPLVDTHSKRTLLIKTVETRDGQVINETSQHDDLE

TRTRPLEQKLISEEDLAANDILDYKDDDDKV

Restriction Sites: SgfI-MluI

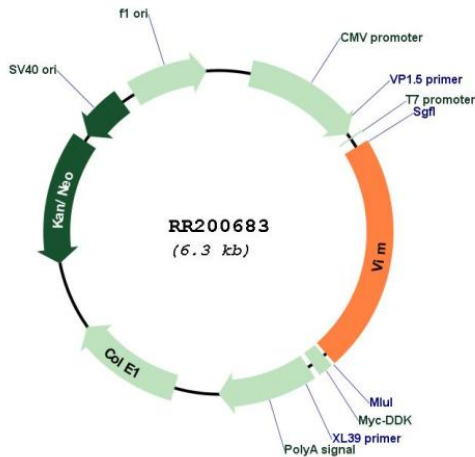
Cloning Scheme:

Cloning sites used for ORF Shuttling:



\* The last codon before the Stop codon of the ORF

Plasmid Map:



<b>ACCN:</b>	NM_031140
<b>ORF Size:</b>	1398 bp
<b>OTI Disclaimer:</b>	The molecular sequence of this clone aligns with the gene accession number as a point of reference only. However, individual transcript sequences of the same gene can differ through naturally occurring variations (e.g. polymorphisms), each with its own valid existence. This clone is substantially in agreement with the reference, but a complete review of all prevailing variants is recommended prior to use. <a href="#">More info</a>
<b>OTI Annotation:</b>	This clone was engineered to express the complete ORF with an expression tag. Expression varies depending on the nature of the gene.
<b>Components:</b>	The ORF clone is ion-exchange column purified and shipped in a 2D barcoded Matrix tube containing 10ug of transfection-ready, dried plasmid DNA (reconstitute with 100 ul of water).
<b>Reconstitution Method:</b>	<ol style="list-style-type: none"><li>1. Centrifuge at 5,000xg for 5min.</li><li>2. Carefully open the tube and add 100ul of sterile water to dissolve the DNA.</li><li>3. Close the tube and incubate for 10 minutes at room temperature.</li><li>4. Briefly vortex the tube and then do a quick spin (less than 5000xg) to concentrate the liquid at the bottom.</li><li>5. Store the suspended plasmid at -20°C. The DNA is stable for at least one year from date of shipping when stored at -20°C.</li></ol>
<b>RefSeq:</b>	<a href="#">NM_031140.1</a> , <a href="#">NP_112402.1</a>
<b>RefSeq Size:</b>	1796 bp
<b>RefSeq ORF:</b>	1401 bp
<b>Locus ID:</b>	81818
<b>UniProt ID:</b>	<a href="#">P31000</a>
<b>Cytogenetics:</b>	17q12.3
<b>MW:</b>	53.7 kDa
<b>Gene Summary:</b>	class-III intermediate filament of the cytoskeleton; along with desmin (the subunit specifically expressed in muscle), vimentin is specific for mesenchymal tissue [RGD, Feb 2006]