

Product datasheet for **RR200679**

Parp9 (NM_001103351) Rat Tagged ORF Clone

Product data:

Product Type:	Expression Plasmids
Product Name:	Parp9 (NM_001103351) Rat Tagged ORF Clone
Tag:	Myc-DDK
Symbol:	Parp9
Synonyms:	RGD1307534
Mammalian Cell Selection:	Neomycin
Vector:	pCMV6-Entry (PS100001)
E. coli Selection:	Kanamycin (25 ug/mL)



[View online »](#)

ORF Nucleotide Sequence:

>RR200679 representing NM_001103351
 Red=Cloning site Blue=ORF Green=Tags(s)

TTTTGTAATACGACTCACTATAGGGCGGCCGGGAATTCGTCGACTGGATCCGGTACCGAGGAGATCTGCC
 GCC**CGCATCGCC**

ATGGCCTATTACACGGGTACAGGAGCAGCAGCTCCACCAGAAAGACCAGCCGATGATTCTCTTGAACACT
 ACCATAGATGGCAAATCCCATTAACACAACATCTTCGAAATTTGAAAAGCAATGAGAGTCAGTTGTA
 TGAAGTCTCCAGAAAAAGTTTGGATGTATCTGTACCCTGAGATATCCAACCTCCAGCAGGAAGCAGCTCT
 CCTGCTCAGAAGGTCTTCAGAAGGATGCTGACCCTGGGATAGAGCTATCTGTCTGGAAGGATGACCTCA
 CCAGACATGTTGTTGATGCTGTGGTGAACGCAGCCAATGAAGACCTTTTGCATGGAGGTGGCCTGGCTGG
 AAGCTTGGTAAAATGGTGGCTCTGAAATCCAAGAAGAGAGCAAAAAATGGATTGCCACCCATGGTAAA
 ATTCCAGTCGGTGGATTGCTGTCACCAGAGCGGGGAAGCTTCCTTGCTATTTGATTATCCATGCAGTTG
 GACCTCGGTGGACGTTATGGACAGCCAGACAGCTATTGGATTACTGTCAGTCGCCATTACCAACATTCT
 AGACTATGTCACCAAATGGAATACATGCATTAAGACAGTAGCAATCCAGCCCTGAGCTCTGGAATTTTC
 CAGTTCCTCTGCATTTGTGTACACGCATAATTGTAGAACTATCTGTCTTTATTTCCAAGACAAGCAAA
 CAGTCAGTAATTTGCGAGAGATTCATCTGGTGAGCAATGAGGGCCCCACTGTTGAGTCCTTTAAATCCTC
 CTCAGAAAAATCTTCGGGAAGGAGCCGAGCTCCTGGGAGAGCCTAGAACTAACCTTCTTCCAACGTA
 ACTCTTACATTGGCCAGGGCCTGACTCTTCAGATTGTCCAAGGCTGCATTGAGCTGCAACAACAGATG
 TAATTGTTAATTTGACACCTGCAGGATTTTAAATCGGGACAAGTGGCACAATCGATTCTTAAAAGAGC
 AGGGTTTGAATGGAATGGAACCTGACAAGATTAACCTGCTCAGATTATCAAGTGGTACAGGTCACA
 AAAGGATTTAAATGTCCTGTGTCAGTACGTGTTCCACGTGTCATGGCATTACAGTATCAGCAAGGACCA
 TATTGAAAAATGCAATGAAGTCTGTCTAGAAAGATGCCTTAAACGAGATATAAATTCATTTCCATTTCC
 TGCTCTCGGGACAGGAGCAATTAATTTAGAGAAGAGTATAGCAGCTAAGATAATGTTTGGAGAAATGTT
 GCATTTGCTAAAGAGCACAAGGAGAAAAAGTAACTGTGAAGATTGTGATCTTTCCAGTAGATGTGGAGA
 CATAAAGGTTTTTTGTGCTGAAATGACGAAAAGTCCAGTGAGCTGAATCTCAACAGTATGGAGGCT
 TTTATCCCTGCCGTGGACCAGAGGGGAGCAAGAAGCAGCAGCCTTGAGGATGGATCTCCTGCCATCGAT
 CTCATGGGTGTAGAAGTGGGAGAGATGTGTGAGGCCAAGGAATGGATTGAAAGGTTGCTGACCTCCAAGG
 ACCATCACATCGTTGAGAATAATCATATTTCTACCTGGGATAAAAGAGCACGGCATGTTGTCTCAGCT
 CCAGACAAGTTCAAACGCTCCATTTACGCGACAGTCAGTCTAGAACGGCAACTTAGAGGTTAAAGGT
 TCCAGGCCGACCTCATTGAAGCAGTTATGAAGATTGAATGTATGCTGTGTGGAGTTCAGGAAGAAGTGG
 CAGGAAAAAAGGAAAGAAGTCTTCGGAGCTTGTCAAGGATGGGAACTGACCAGCAAGGAAAACTGAAAGA
 AATGGAAGAATCGTGACATTTCAACGATACCCAGTATCTTTAACTCAGGAATTTCTGGACAAAAGAAA
 CACTTTGACAAGTGTGGCTTGTGTGTTGTGAAGGTGGAGGAGGTAGACAATGAGGTGTTGCTGGCTGCGT
 TCCAAGAGAAGAAGAAGATGATGGAAGAGAAGTGCCAAAGGGATCTGGGAGCCAAAGGTTGTTTCAGCA
 GGTCCACACACAGTTCTGCAATGCAGTATGCAGAGTCGGCTTCCACAGACTGACTCCACACACAATGAC
 CCAGTTTATGGAGCCGGCATATATTTACCAAGAGCCTCAAAAACTAGCAGACAAGGCCAGGAAAAACCT
 CTAGCACAGACAGGCTAATCTATGTGTTGAGGCAGAAGTACTCACAGGGTCTTCTGTCCAGGGTAATTT
 CTCAAATATCATCCCTCCGCCATTGAGTCTGGGGCTTTAGATGTTGATGACAGCGTGGTTGACAGTGTT
 TCCAACCCTGAAACCTTTGTTATTTTGTAGTGGGTACAGGCGATGCCAGGTACTTGTGGACTTGTACAC
 AGGATAGGACATTCTCACAGCATCCAATGTGGTCCCAGGGCTACTCGTCAGAACCAGGAATGGCCTCTTC
 GCTGCAGTCTGGGAAGGGTCTCAATGGCAGCCCTGTT

ACGCGTACGCGGCCGCTCGAGCAGAACTCATCTCAGAAGAGGATCTGGCAGCAATGATATCCTGGATT
 ACAAGGATGACGACGATAAGGTTTAA

Protein Sequence: >RR200679 representing NM_001103351
 Red=Cloning site Green=Tags(s)

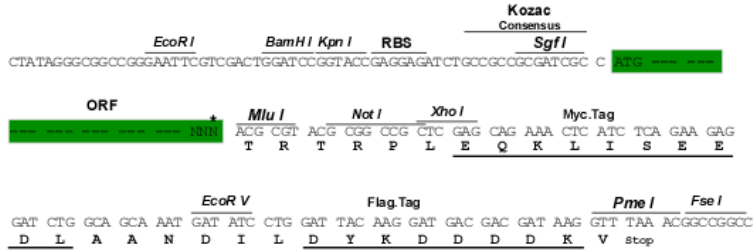
MAYYTGTGAAAPTERPADDSEHYHRWQIPIKHNI FEILKSNESQLYEVLQKKFGCICTLRYPTPAGSSS
 PAQKVFRRMLTPGIELSVWKDDLTRHVVDVAVNAANEDLLHGGGLAGSLVKIGGSEIQEESKKWIATHGK
 IPVGGFAVTRAGKLPYLIHAVGPRWTVMDSQTAIGLLSVAITNILDYVTKWNTCIKTVAIPALSSGIF
 QFPLHLCTRIIVETICLYFQDKQTVSNLREIHLVSNEGPTVESFKSSSENI FGKEPSSWESLETNPSSNV
 TLHIGQGLTLQIVQGCIELQTTDVI VNSGHLQDFKSGQVAQSILKRAFEMEMELDKIKLSSDYQVVQVT
 KGFKLSQYVFHVSWHYSISKDQILKNAMKSCLERCLKRDINSISFPALGTGAINLEKSI AAKIMFEEIV
 AFAKEHKEKTLTVKIVIFPVDVETYKVFCAEMTKRSSELNLS DGGLLSLPWTRGEQRSSSLEDGSPAID
 LMGVEVGEMCEAKEWIERLLTSKDHHIVENNHILYLGIKEHGMLS QLQTSSNVSISATVSPRTATLEVKG
 SQADLIEAVMKIECMLCGVQEEVAGKKERSLRSLSGWGT DQQGKLKEMEE SCTFQRYPVSLTQEFLDQKK
 HFDKCGLCVVKVEEVDNEVLLAAFQEKKKMMEEKMPKGS GSQRLFQQVPHQFCNAVCRVGFHRLYSTHND
 PYYGAGIYFTKSLKKLADKARKTSSTDRLIYVFEAEVL TGSFCQGNFSNIIPPPLSPGALDVHDSVVDSV
 SNPETFVIFSGVQAMPRYLWTCTQDRTF SQHPMWSQGY SSEPMASSLQSWGRVSNVSPV

TRTRPLEQKLISEEDLAANDILDYKDDDDKV

Restriction Sites: Sgfl-Mlul

Cloning Scheme:

Cloning sites used for ORF Shuttling:



* The last codon before the Stop codon of the ORF

- ACCN: NM_001103351
- ORF Size: 2490 bp
- OTI Disclaimer: The molecular sequence of this clone aligns with the gene accession number as a point of reference only. However, individual transcript sequences of the same gene can differ through naturally occurring variations (e.g. polymorphisms), each with its own valid existence. This clone is substantially in agreement with the reference, but a complete review of all prevailing variants is recommended prior to use. [More info](#)
- OTI Annotation: This clone was engineered to express the complete ORF with an expression tag. Expression varies depending on the nature of the gene.
- Components: The ORF clone is ion-exchange column purified and shipped in a 2D barcoded Matrix tube containing 10ug of transfection-ready, dried plasmid DNA (reconstitute with 100 ul of water).

- Reconstitution Method:**
1. Centrifuge at 5,000xg for 5min.
 2. Carefully open the tube and add 100ul of sterile water to dissolve the DNA.
 3. Close the tube and incubate for 10 minutes at room temperature.
 4. Briefly vortex the tube and then do a quick spin (less than 5000xg) to concentrate the liquid at the bottom.
 5. Store the suspended plasmid at -20°C. The DNA is stable for at least one year from date of shipping when stored at -20°C.

RefSeq: [NM_001103351.2](#), [NP_001096821.1](#)

RefSeq Size: 3179 bp

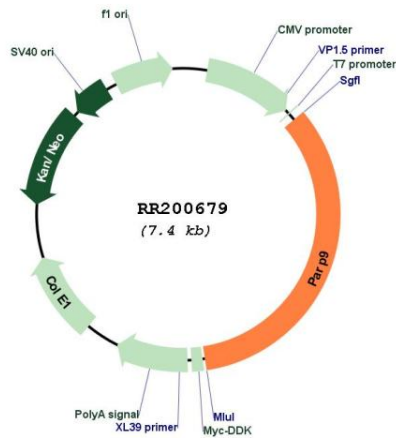
RefSeq ORF: 2493 bp

Locus ID: 303905

Cytogenetics: 11q22

MW: 92.2 kDa

Product images:



Circular map for RR200679